

NOTES:

REVISIONS

| LTR | DESCRIPTION | DATE | CHECKED |
|-----|-------------|---------|--------------------|
| - | NEW DWG | 1-08-00 | <i>[Signature]</i> |

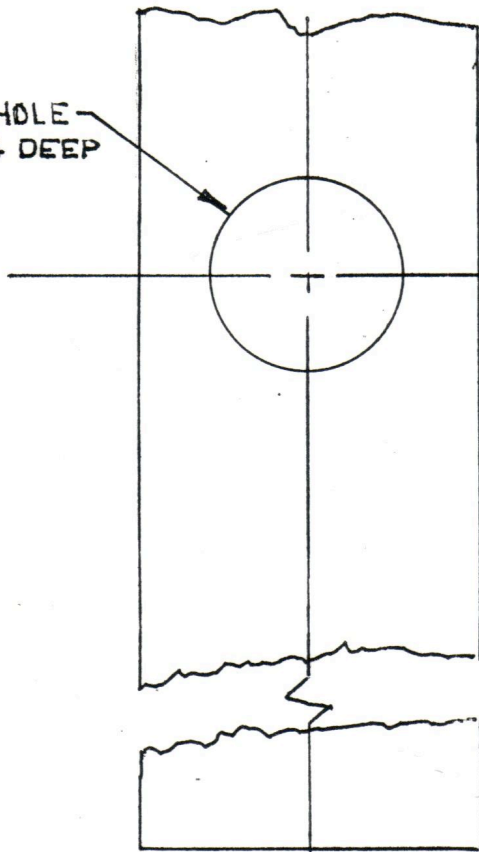
INSTALLATION INSTRUCTIONS:

1. PREPARE BOTH ACTIVE AND INACTIVE DOORS AS SHOWN BELOW.
2. INSERT #3850 EFMB IN 3/4" DIA. HOLE IN INACTIVE DOOR SECURE IN PLACE WITH 4 ea. #6x3/4" FHPH COMBO SCREWS
3. INSTALL BLACK FINISHING PLUG IN 1" DIA. HOLE IN ACTIVE DOOR

MORTISE 1-3/4" x 1,5/64" DEEP

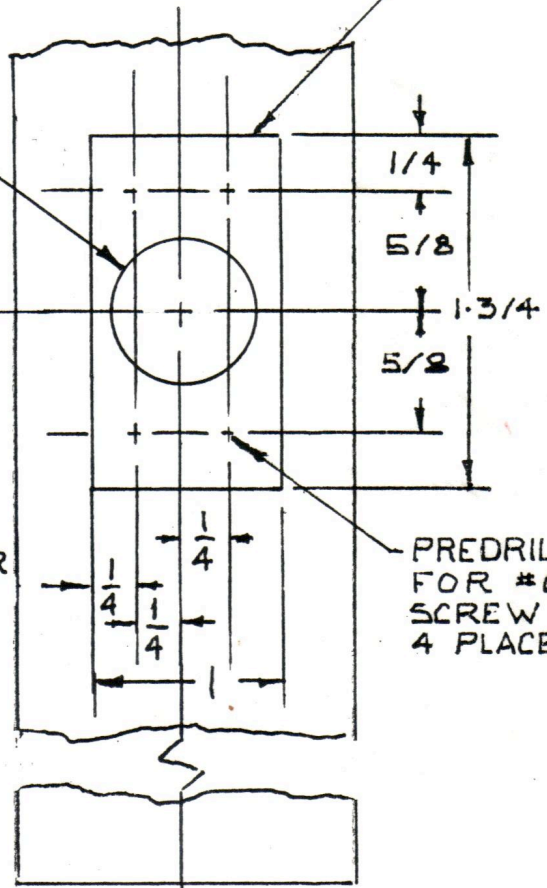
1" DIA. HOLE
x 1-3/4" DEEP

3/4" DIA.
x 3-1/2" DEEP



ACTIVE DOOR

LOCATE
6 INCHES
ABOVE FLOOR



INACTIVE DOOR



Triangle Brass Manufacturing Company, Inc.

3528 Emery Street, P.O. Box 23277
Los Angeles, CA 90023, USA

Standard Tolerances Unless Otherwise Specified

.X = ±.030" .XX = ±.010"

.XXX = ±.050" X° = ±1/2°

TITLE DOOR PREPARATION
& INSTALLATION INSTRUCTIONS,
#3850 EMFB

PART NO

DRAWN BY IJS 1-08-01

A DWG. NO. 12026