

TEMPLATE NO.

19869  
SHT 1 OF 1



**Trimco**

3528 Emery Street  
PO BOX 23277  
Los Angeles, CA 90023-0277  
(323)262-4191  
www.trimcobbw.com

PRODUCT

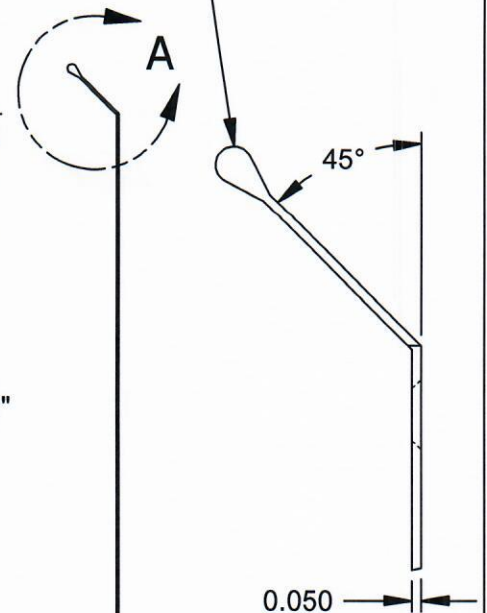
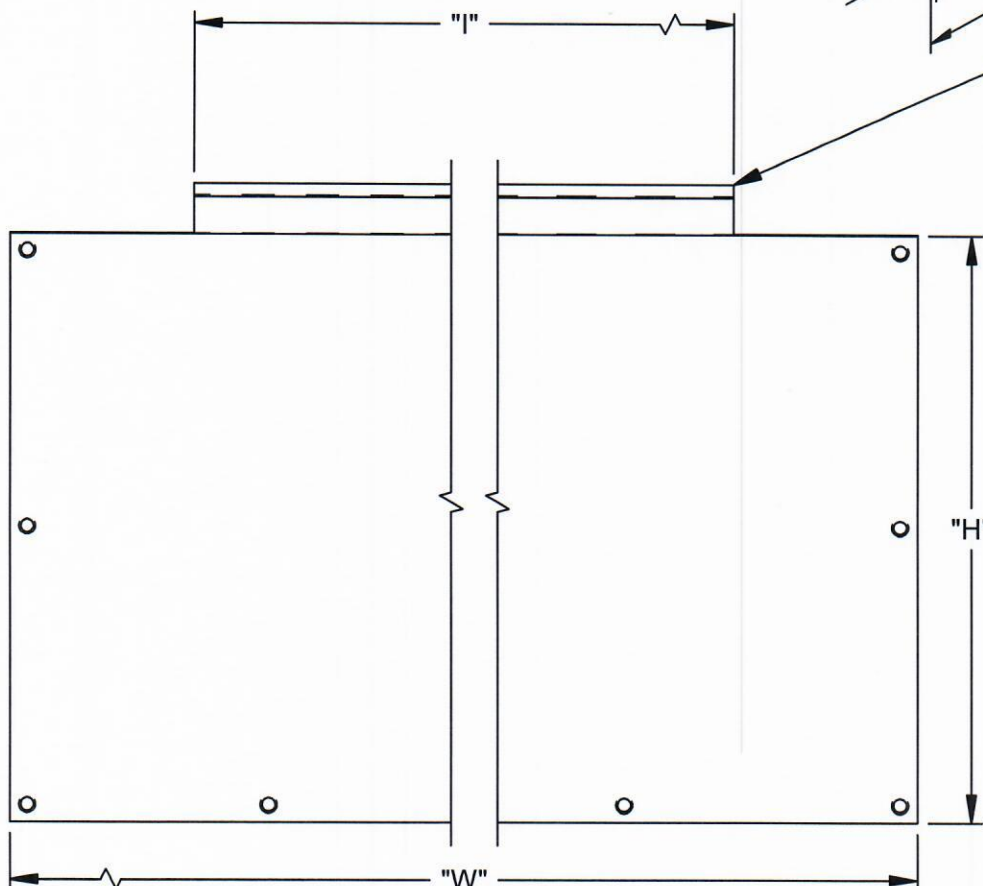
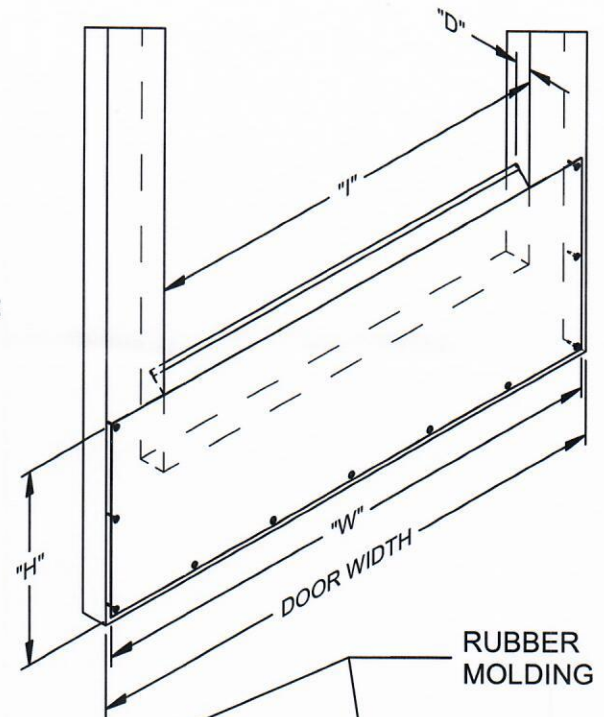
HANDICAP KICK PLATES

# HANDICAP KICK PLATE

(PART NUMBER KH050)

NOTES:

1. SUPPLIED WITH #6X5/8" SMS
2. MATERIAL THICKNESS: 0.050"
3. WHEN ORDERING, SUPPLY THE FOLLOWING INFO:  
 "W" - OVERALL PLATE WIDTH  
 "H" - PLATE HEIGHT (10" MINIMUM)  
 "I" - INSIDE DISTANCE BETWEEN STILES  
 "D" - DISTANCE FROM STILE TO GLASS  
 "D" =  $\frac{(\text{STILE THICKNESS} - \text{GLASS THICKNESS})}{2}$



**DETAIL A**  
**SCALE 1 : 1**

NOTE: This template is provided for use only on the job for which it was requested. Trimco reserves the right to make design changes without notice. Trimco will not be responsible for errors or damage caused by the use of out-of-date templates.

DATE

07/19/16