

2

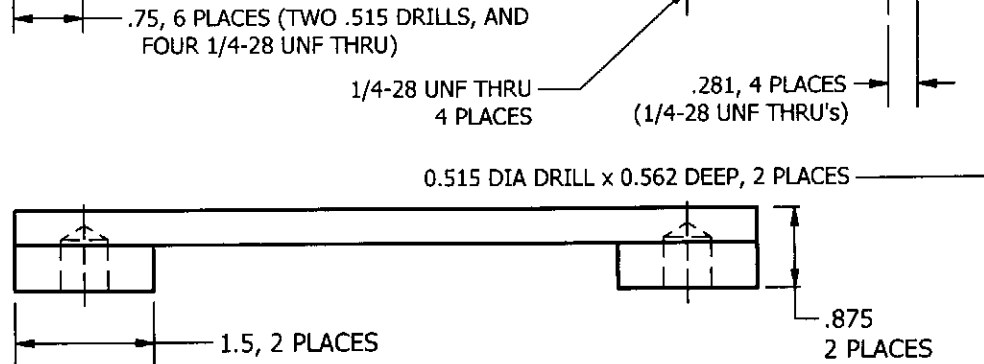
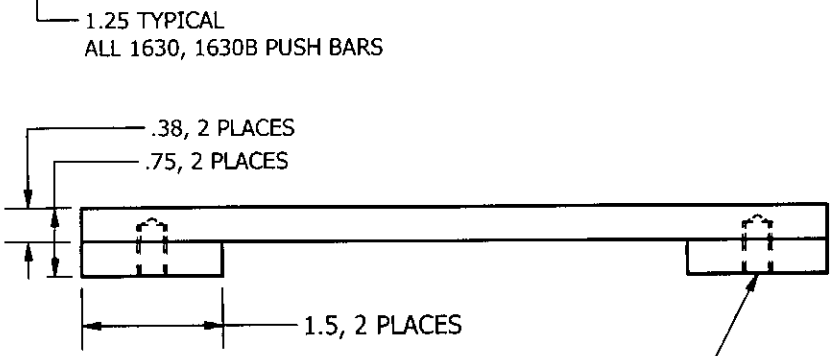
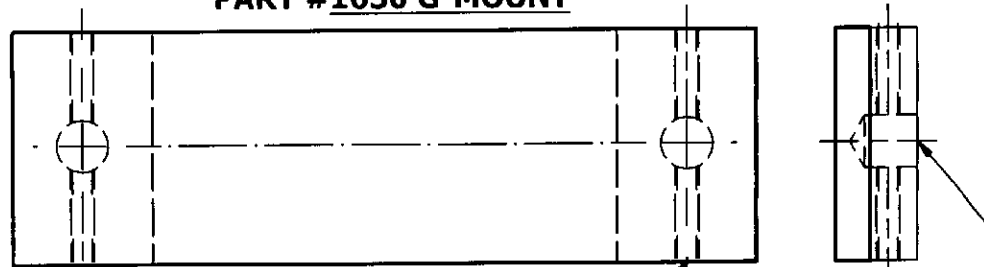
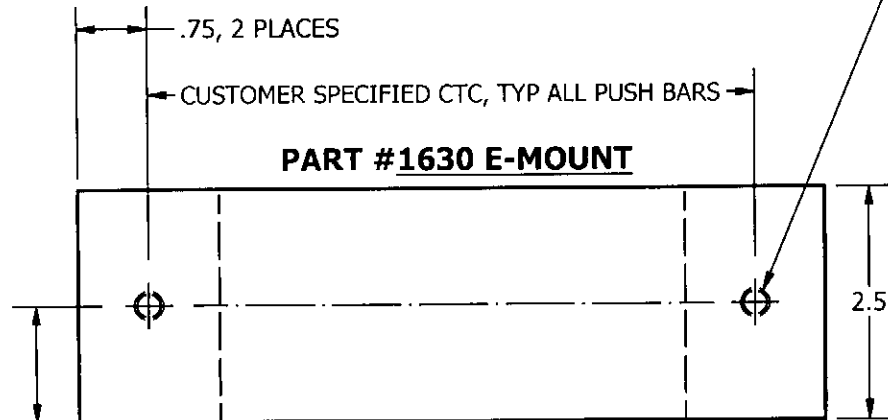
1

SUPPLY WITH:
1/4-20 UNC X 2 1/4 FH, PH, MS, OR THRU-BOLT
LENGTH SPECIFIED FOR 1 3/4 DOOR

REVISION HISTORY					
LTR	ECN	DESCRIPTION	MFG	ENG	DATE
A	XXXX	CREATED DRAWING		LR	1-26-87
B	XXXX	REVISED		LR	8-22-95
C	XXXX	ADDED 1630B CONFIGURATION		LR	1-18-00
D	XXXX	REDRAWN ON CAD AND GENERAL CLARIFICATION, DIMS UPDATED: .75 WAS 1.0; 1.5 WAS 2.0	HM	JWG	1-11-12

PART #1630 E-MOUNT

PART #1630 G-MOUNT



1/4-20 UNC x 9/16 DEEP, 2 PLACES

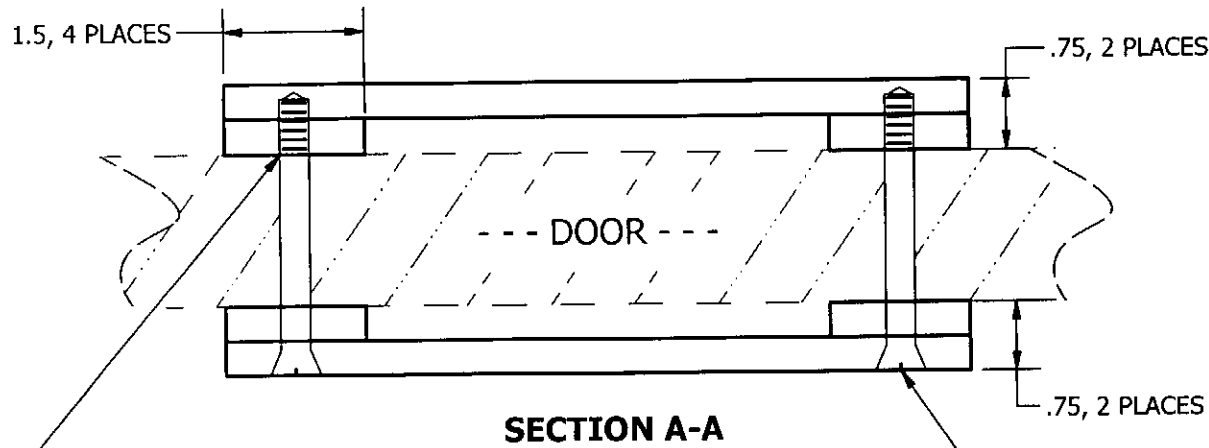
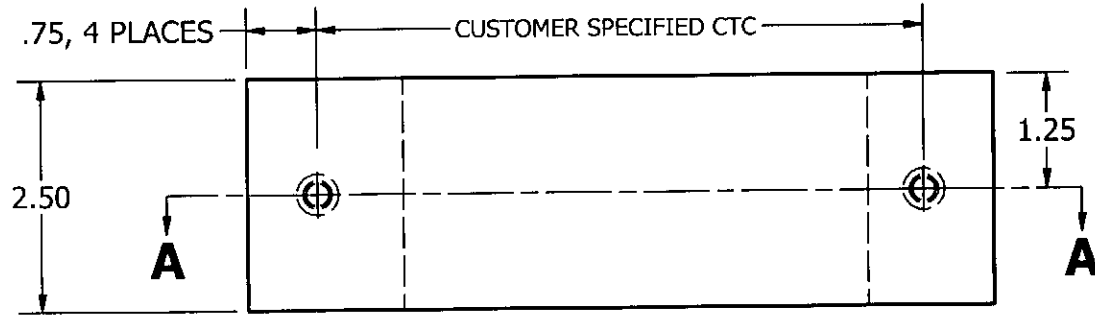
PART #1630B, BACK-TO-BACK MOUNTING, ON SHEETS 2 OF 3 AND 3 OF 3

<p>3528 EMERY STREET, LOS ANGELES, CA 90023</p> <p>THIS DOCUMENT, CONTAINING CONFIDENTIAL AND TRADE SECRET INFORMATION, IS THE PROPERTY OF TRIMCO AND IS GIVEN TO THE RECEIVER IN CONFIDENCE. THE RECEIVER BY RECEPTION AND RETENTION OF THE DOCUMENT ACCEPTS THE DOCUMENT IN CONFIDENCE AND AGREES THAT, EXCEPT AS AUTHORIZED IN WRITING BY TRIMCO, IT WILL (1) NOT USE THE DOCUMENT OR ANY COPY THEREOF OR THE CONFIDENTIAL OR TRADE SECRET INFORMATION THEREIN. (2) NOT COPY THE DOCUMENT. (3) NOT DISCLOSE TO OTHERS EITHER THE DOCUMENT OR THE CONFIDENTIAL OR TRADE SECRET INFORMATION THEREIN. (4) UPON COMPLETION OF THE NEED TO RETAIN THE DOCUMENT, OR UPON DEMAND, RETURN THE DOCUMENT, ALL COPIES THEREOF, AND ALL COPIES THEREFROM.</p>	UNLESS OTHERWISE SPECIFIED: ALL DIMS IN INCHES, & INCLUDE CHEM. APPLIED/PLATED FINISH. REMOVE BURRS & SHARP EDGES DO NOT SCALE DRAWING		TITLE PUSH BAR											
	<table border="1"> <thead> <tr> <th>DECIMALS</th> <th>TOLERANCE</th> </tr> </thead> <tbody> <tr> <td>.X</td> <td>± .030</td> </tr> <tr> <td>.XX</td> <td>± .010</td> </tr> <tr> <td>.XXX</td> <td>± .005</td> </tr> <tr> <td>ANGLES</td> <td>± 5'</td> </tr> </tbody> </table>		DECIMALS	TOLERANCE	.X	± .030	.XX	± .010	.XXX	± .005	ANGLES	± 5'	MATERIAL AS SPECIFIED PER ORDER	
	DECIMALS	TOLERANCE												
	.X	± .030												
.XX	± .010													
.XXX	± .005													
ANGLES	± 5'													
DRAWN BY LR DATE 1986 CHECKED BY LR DATE 1986		FINISH AS SPECIFIED PER ORDER												
SIZE A SCALE NONE		PART NO 1630, 1630B DWG NO 11551 SHEET 1 of 3												

2

1

PART #1630B E-MOUNT (BACK-TO-BACK MOUNTING)



1/4-20 UNC x 9/16 DEEP, 2 PLACES

DRILL 0.230 THRU, AND SUPPLY WITH:
 1/4-20 UNC X 2 7/8 FH, PH, MS, OR THRU-BOLT
 LENGTH SPECIFIED FOR 1 3/4 DOOR
 COUNTERSINK FOR FH SCREW IF APPLICABLE
 2 PLACES

Trimco
 3528 EMERY STREET, LOS ANGELES, CA 90023

THIS DOCUMENT, CONTAINING CONFIDENTIAL AND TRADE SECRET INFORMATION, IS THE PROPERTY OF TRIMCO AND IS GIVEN TO THE RECEIVER IN CONFIDENCE. THE RECEIVER BY RECEPTION AND RETENTION OF THE DOCUMENT ACCEPTS THE DOCUMENT IN CONFIDENCE AND AGREES THAT, EXCEPT AS AUTHORIZED IN WRITING BY TRIMCO, IT WILL (1) NOT USE THE DOCUMENT OR ANY COPY THEREOF OR THE CONFIDENTIAL OR TRADE SECRET INFORMATION THEREIN; (2) NOT COPY THE DOCUMENT; (3) NOT DISCLOSE TO OTHERS EITHER THE DOCUMENT OR THE CONFIDENTIAL OR TRADE SECRET INFORMATION THEREIN; (4) UPON COMPLETION OF THE NEED TO RETAIN THE DOCUMENT, OR UPON DEMAND, RETURN THE DOCUMENT, ALL COPIES THEREOF, AND ALL COPIES THEREFROM.

THIRD ANGLE PROJECTION

UNLESS OTHERWISE SPECIFIED:
 ALL DIMS IN INCHES, & INCLUDE CHEM. APPLIED/PLATED FINISH. REMOVE BURRS & SHARP EDGES DO NOT SCALE DRAWING

DECIMALS	TOLERANCE
.X	± .030
.XX	± .010
.XXX	± .005
ANGLES	± .5°
DRAWN BY	DATE
CHECKED BY	DATE

TITLE PUSH BAR BTB (THIS SHEET)	
MATERIAL AS SPECIFIED PER ORDER	FINISH
SIZE A	PART NO 1630, 1630B
SCALE	DWG NO 11551
	SHEET 2 of 3
	REV D

