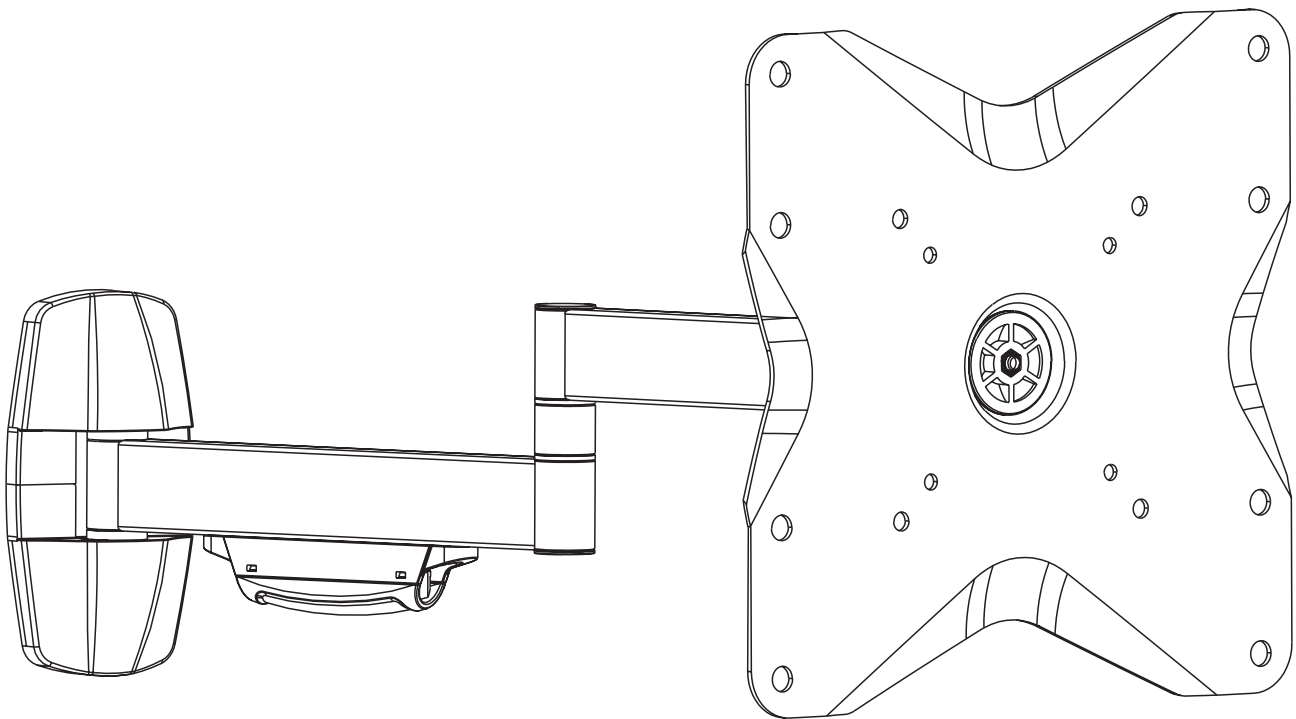


Full Motion LED / LCD Monitor Wall Mount

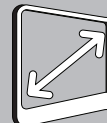


CAUTION: DO NOT EXCEED
RATE-LISTED WEIGHT. SERIOUS
INJURY OR PROPERTY DAMAGE
MAY OCCUR

VZ-AM03



75x75/100x100
200x100/200x200



Display 27"~32"



NOTE : Read the entire instruction manual before you start installation and assembly.

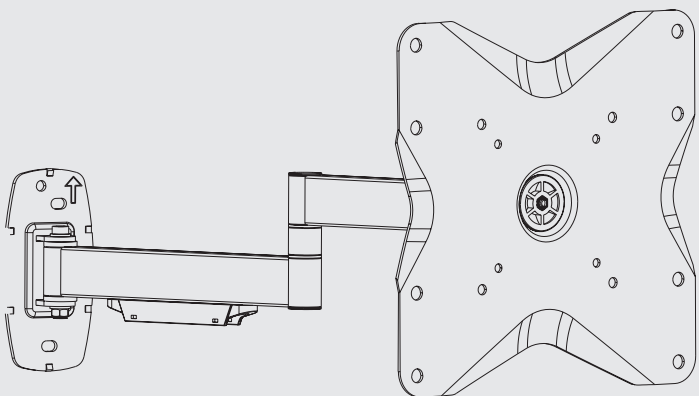
WARNING

- Do not begin the installation until you have read and understood all the instructions and warnings contained in this installation sheet. If you have any questions regarding any of the instructions or warnings, please contact your local distributor.
- This mounting bracket was designed to be installed and utilized **ONLY** as specified in this manual. Improper installation of this product may cause damage or serious injury.
- This product should only be installed by someone with good mechanical ability who has basic building experience and fully understands this manual.
- Make sure that the supporting surface will safely support the combined weight of the equipment and all attached hardware and components.
- If mounting to wood wall studs, make sure that mounting screws are anchored into the center of the studs. The use of a stud finder is highly recommended.
- Always use an assistant or mechanical lifting equipment to safely lift and position the equipment.
- Tighten screws firmly, but do not over tighten. Over tightening can cause damage to the items. This greatly reduces their holding power.
- This product is intended for indoor use only. Using this product outdoors could lead to product failure and personal injury.

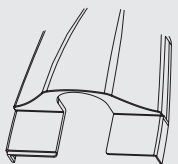
Component Checklist

IMPORTANT

Ensure that you have received all parts according to the component check list prior to installation. If any parts are missing or faulty, call your local distributor for a replacement.



articulated arm assembly
A



decorative cover (x2)
B



cable cover (x1)
C



3mm Allen key (x1)
D

Package M



M4x14 (x4)
M-A



M5x14 (x4)
M-B



M6x14 (x4)
M-C



M8x20 (x4)
M-D



D5 washer (x4)
M-E



D8 washer (x4)
M-F



small spacer (x8)
M-G

Package W



ST6.3x55 (x3)
W-A

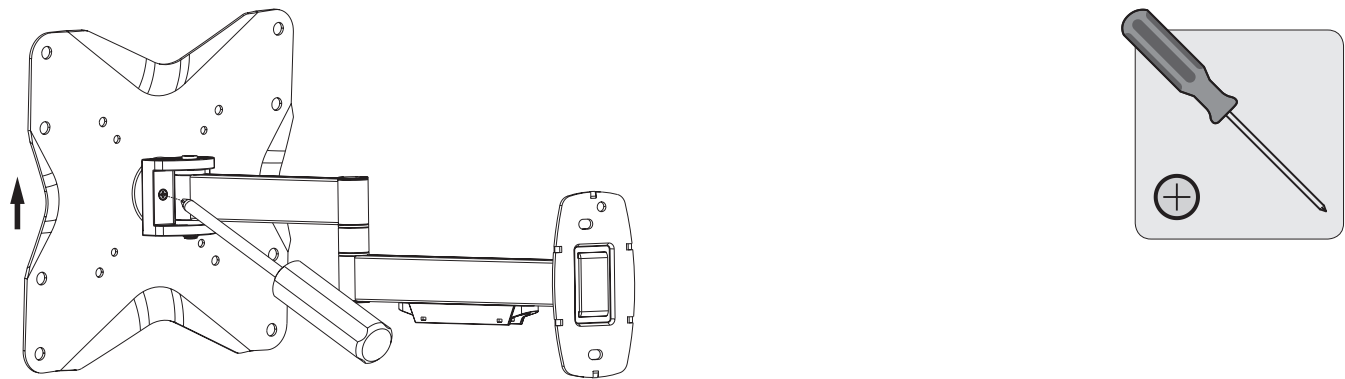


concrete anchor (x3)
W-B

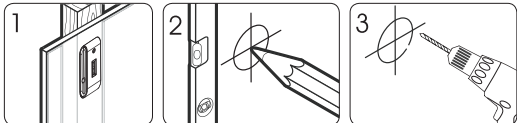
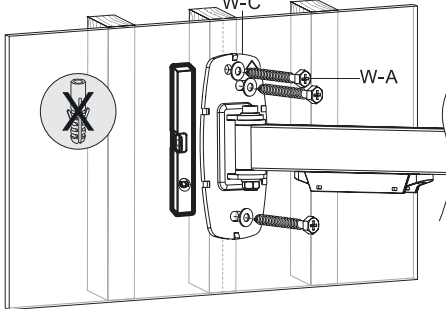
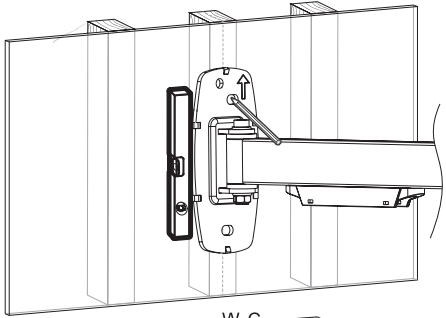
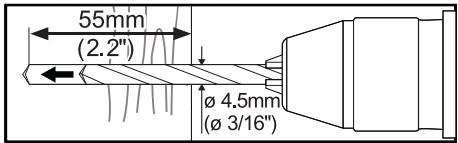
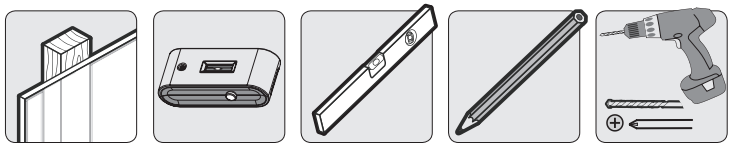


D6 washer (x3)
W-C

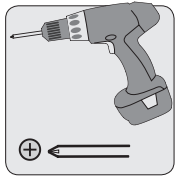
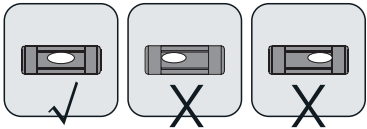
1. Removing the VESA Plate



2a. For wood stud wall mounting



Find and mark the right location of mounting holes Drill pilot holes



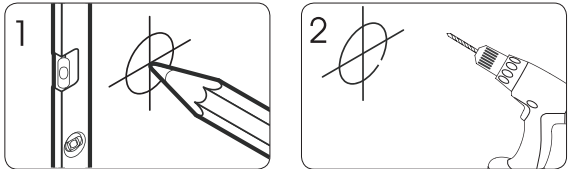
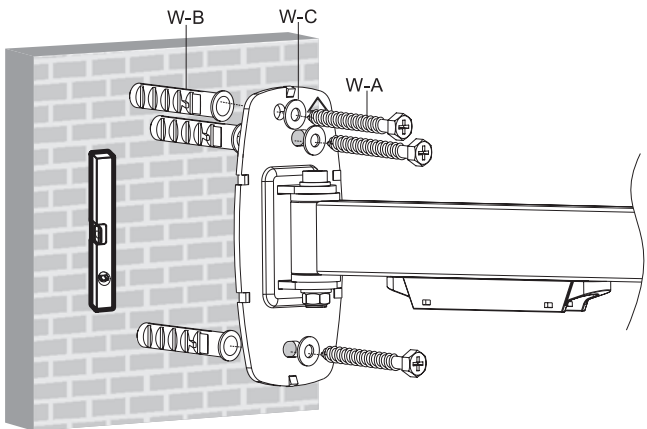
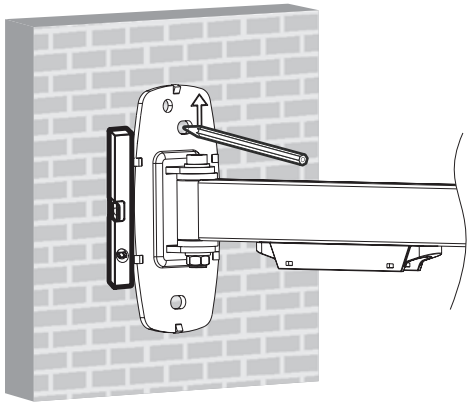
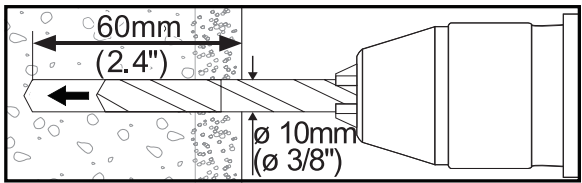
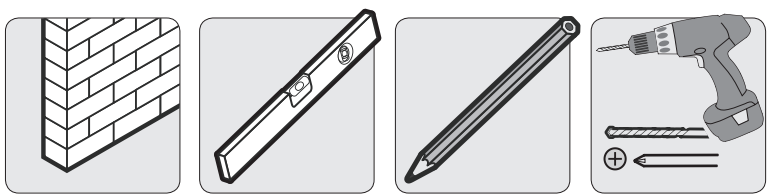
Screw the wall mount onto the wall

With arrow pointing up

! WARNING

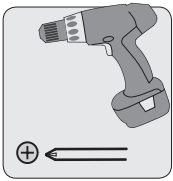
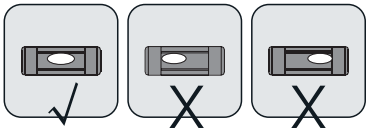
- Make sure that mounting screws are anchored into the center of the studs. The use of a stud finder is highly recommended.
- Installers are responsible to provide hardware for other types of mounting situations.
- Installers must verify that the supporting surface will safely support the combined weight of the equipment and all attached hardware and components.

2b. For solid brick and concrete mounting



Mark the right location of mounting holes

Drill pilot holes



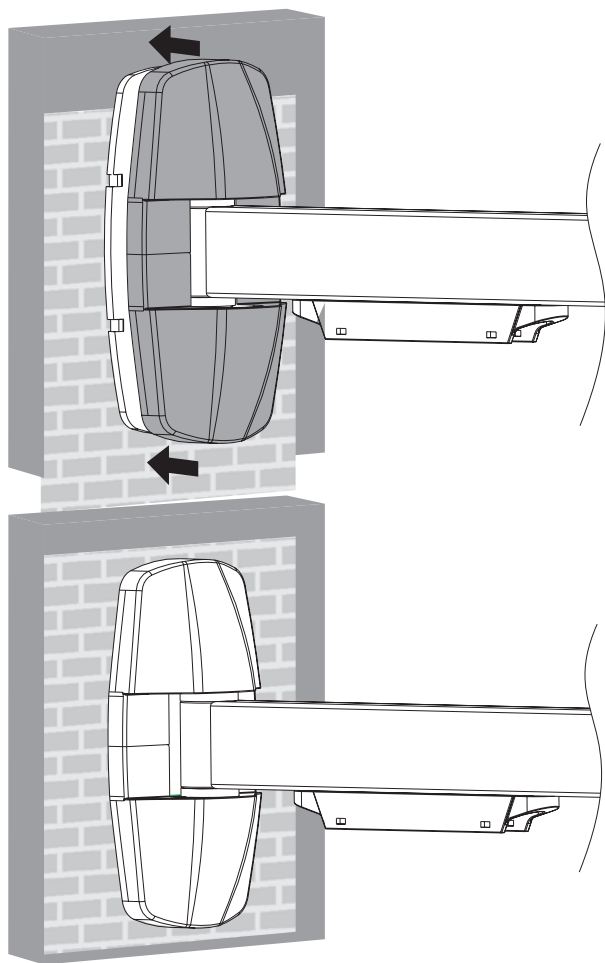
Screw the wall mount onto the wall

With arrow pointing up

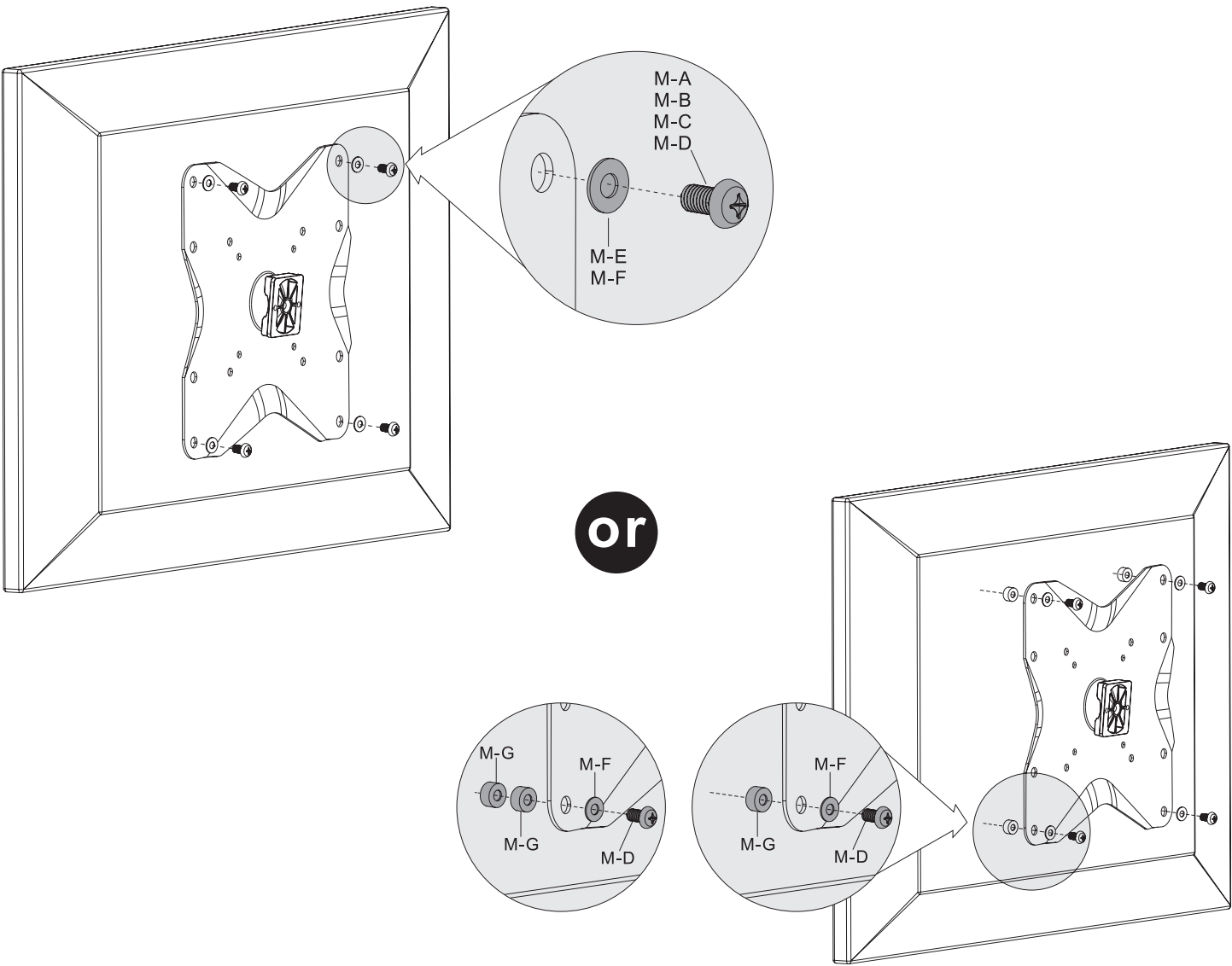
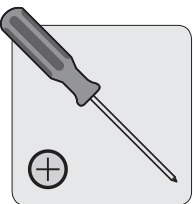
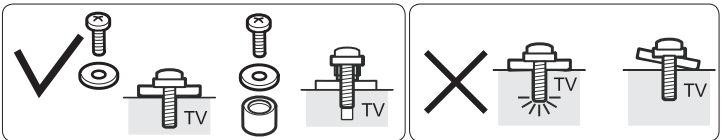
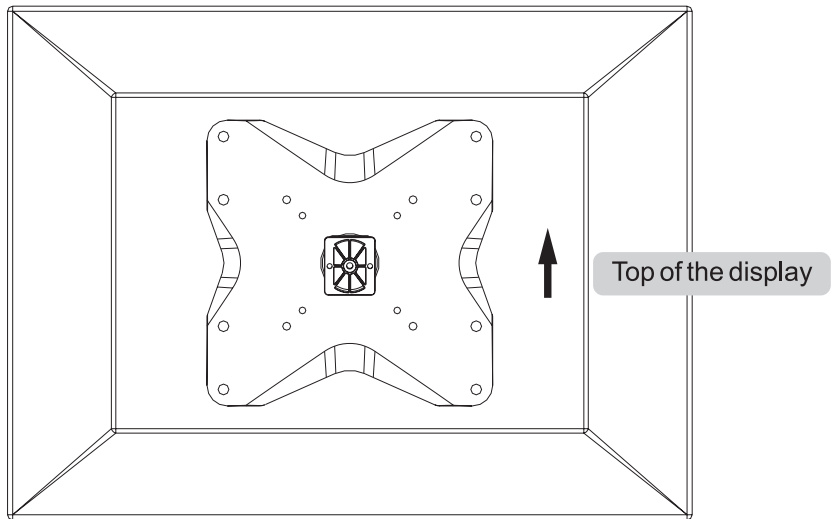
! WARNING

- Installers must verify that the supporting surface will safely support the combined weight of the equipment and all attached hardware and components.

3. Installing the Decorative Covers



3. Installing the Decorative Covers



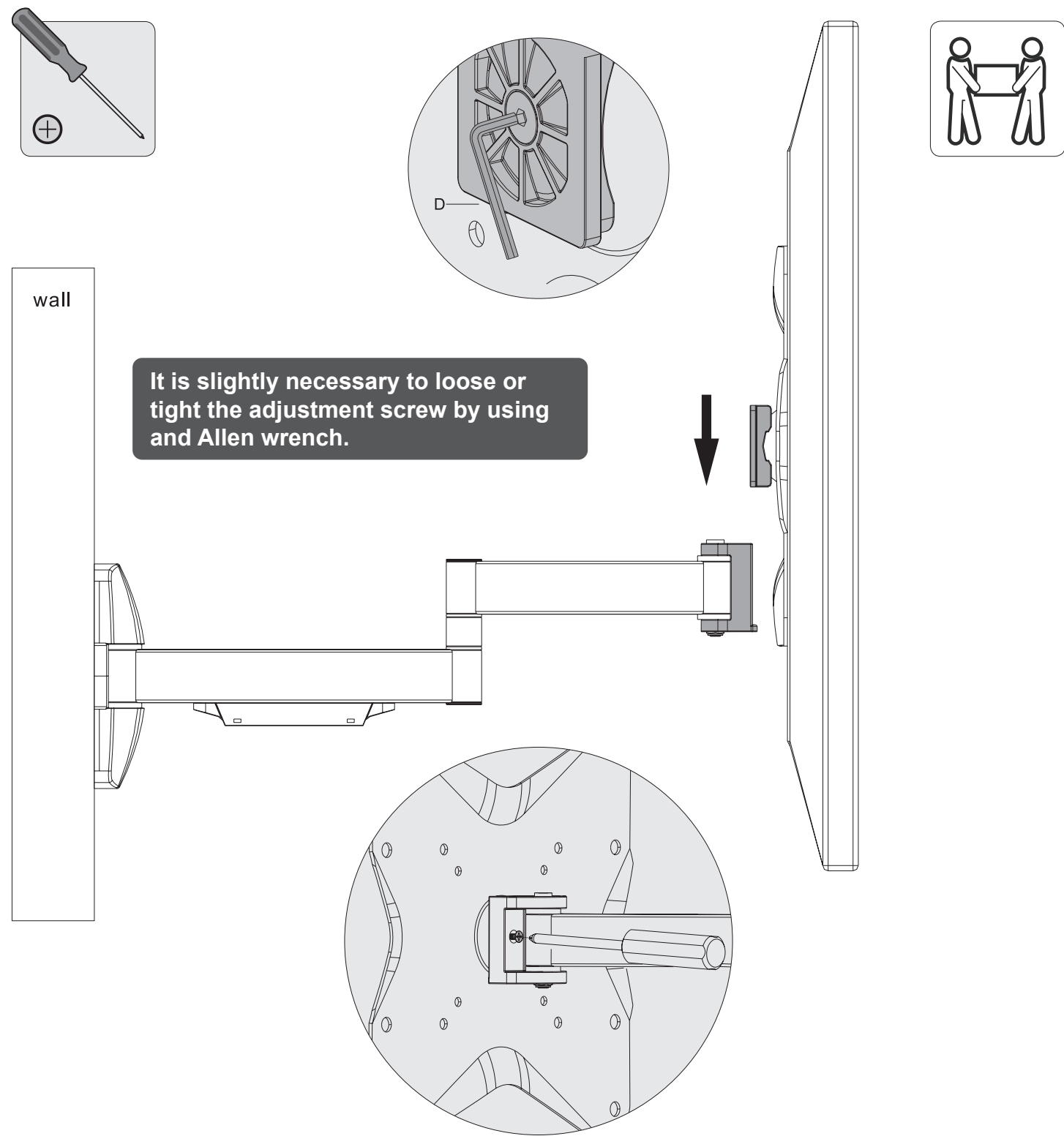
Note: Choose appropriate screws, washers and spacers (if necessary) according to the type of screen.

- **Screw the VESA plate onto the display.**



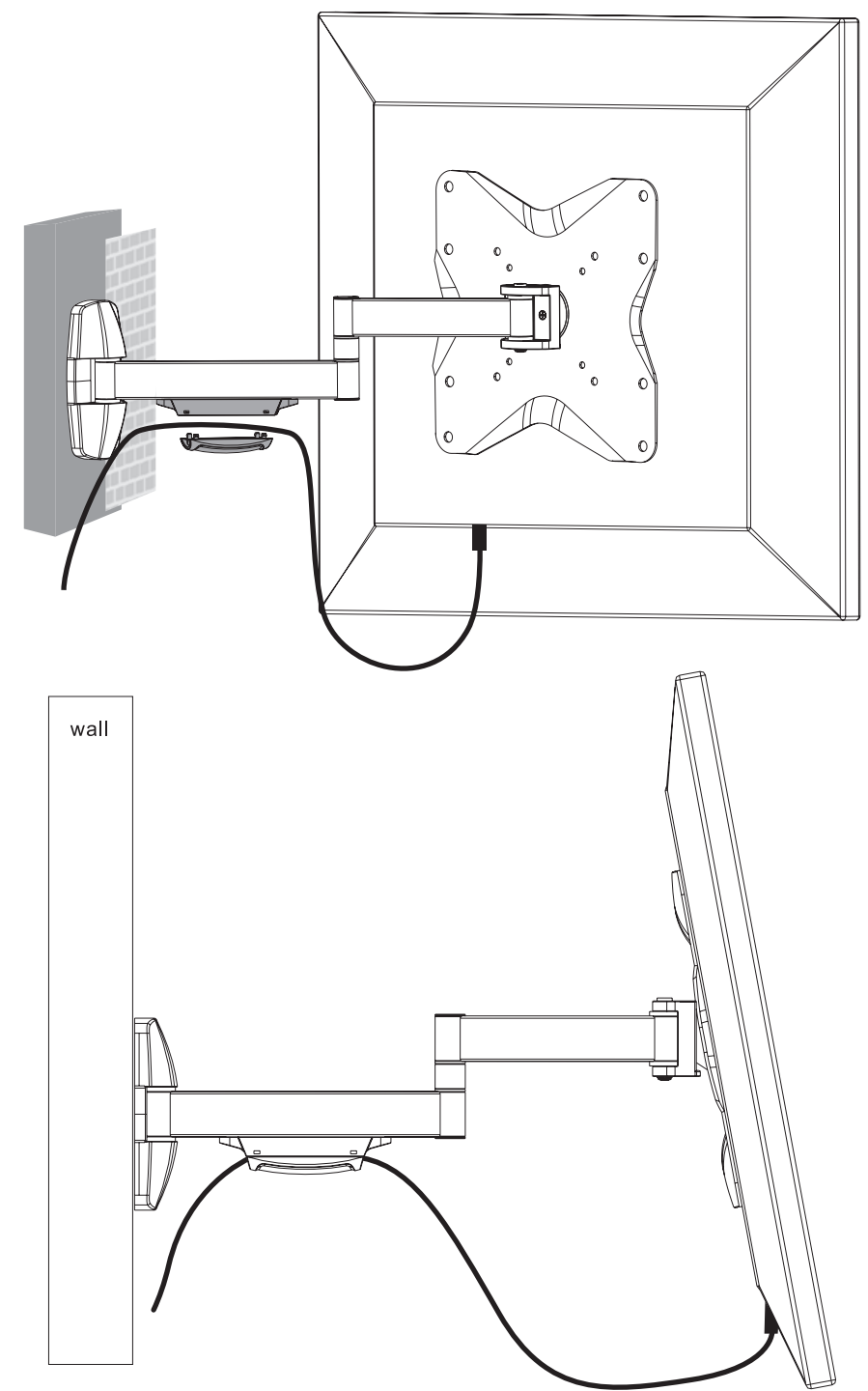
Tighten all screws, but do not over tighten.

5. Hooking the Display onto the wall mount



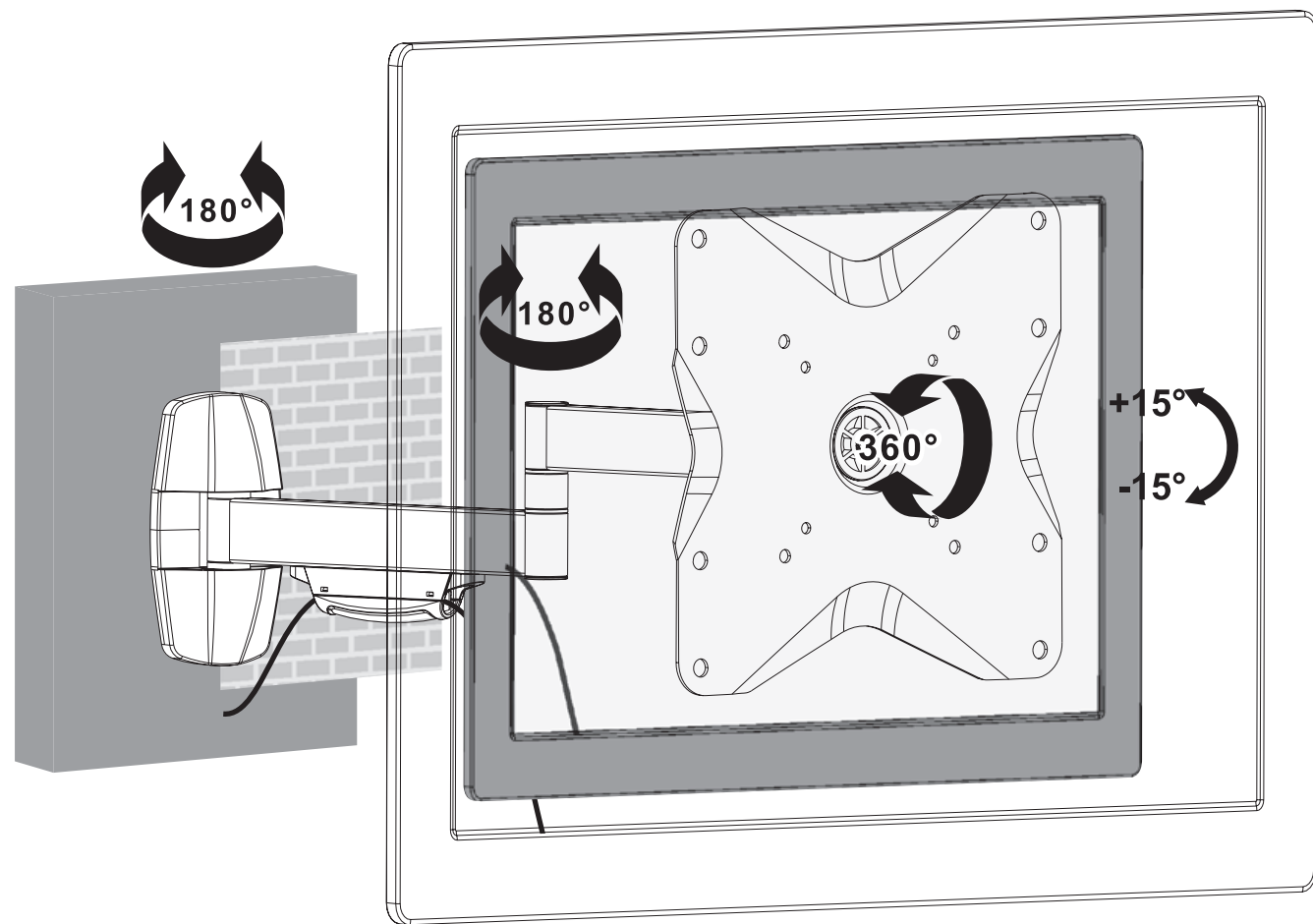
Insert the VESA plate into the mount rail. Tighten screw (that is previously removed) with a proper screw driver.

6. Cable Management



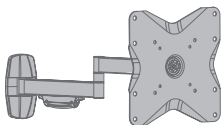
Connect the cables to your display and route along the arms.
Fit the cable cover into rail to hold the cables
Note: Leave slack cable for cantilever arm movement.

7. Adjustment



Adjust to the desired position or tilt.

- Maintenance**
- Check that the bracket is secure and safe to use at regular intervals (at least every three months).
 - Please contact your dealer if you have any questions.



Contact ViewZ

- Address : 177 W. Orangethorpe Ave., Placentia, CA 92870
- Phone : (714)996-1177, Fax : (714)996-1138
- Sales : sales@viewzusa.com
- Specification subject to change without notice.