

## 18.5" VIDEO PRODUCTION RACK MOUNT 3G-SDI MONITOR



### VZ-185RM-P ADVANTAGES

- 3G SDI LEVEL A/B (YCbCr, RGB 4:4:4) Support
- 12bit to 8bit Dithering
- Selectable Y/R/G/B Histogram (SD/HD SDI)
- Y Clip Guide Min/Max Select (SD/HD SDI)
- SDI Embedded 16CH Audio Level Meter / 2CH Select Audio Waveform
- Field Color Calibration Software (option) support
- RJ-45 Remote Control
- False Color(SD/HD SDI)
- DSLR Scaling (HDMI)
- Embedded SDI to HDMI Converter
- Focus Assist(SD/HDSDI)
- DPMS Select

MODEL #	VZ-185RM-P	
<b>DISPLAY</b>		
Screen Size	18.5"	
Max. Resolution	1366 x 768 pixel	
Pixel Pitch	0.1 mm x 0.3 mm	
Brightness	250 cd/m <sup>2</sup> (Typical)	
Contrast Ratio	1000 : 1	
Aspect Ratio	16 : 9	
Viewing Angle (H/V)	178° / 178°	
Color Depth	16.7 M (8bit)	
<b>INTERFACE</b>		
SDI In / Out	2 / 1 (Loophthrough)	
HDMI In / Out	1 / 1 (Loophthrough)	
Component In (BNC jack)	3 (3CVBS, S-Video, Component)	
RS-422 In / Out	1 / 1	
RJ-45 In (Remote Control)	1	
Audio In / Out (Analog Stereo)	1 / 1	
DVI In	1	
HDMI In (PGM Download)	1	
<b>AUDIO</b>		
Built in speaker	2W x 2	
<b>DIMENSIONS &amp; WEIGHT - WITH MOUNT</b>		
Outline Dimension (W x H x D) (inch)	18.93 x 12.16 x 3.3	
(W x H x D) (mm)	481 x 309 x 85	
Net Weight	15.45 lbs (7.1 kg)	
<b>Input Format</b>		
SDI SMPTE 425M-AB	1080p ( 60/59.94/50/30/29.97/25/24/23.98 ) 1080i ( 60/59.94/50 ), 1080 Psf (30/29.97/25/24/23.98)	
SMPTE 274M	1080P (30/29.97/25/24/23.98) 1080i (60/59.94/50) 1080Psf (30/29.97/25/24/23.98)	
SMPTE 260M	1035i (60/59.94)	
SMPTE 296M	720P(60/59.94/50/30/29.97/25/24/23.98)	
SMPTE 125M	525i (NTSC 59.94)	
ITU-R BT.601	625i (PAL 50)	
2K Format	2048 x 1080P (24/23.98/24sF/23.98sF)	
ANALOG CVBS, S-Video	NTSC(525/59.94i) , PAL(625/50i)	
COMPONENT	1080P (60/59.94/50/ 30/29.97/25/24/23.98) 1080i (60/59.94/50), 720P(60/59.94/50)	
HDMI	480i/480P/576i/576P/1080i/1080P	
DVI	VGA, SVGA, XGA, SXGA, WXGA, WUXGA	
<b>GENERAL</b>		
Power - Electrical Ratings	XLR-4p (DC 24V) / AC 100 ~ 240V	
- Consumption	30 W	
Warranty - Parts / Labor	2 Years / 3 Months	
- MTBF (Approx.)	33,000 Hours	
Operating Temperature	32 - 104°F / 0 - 40°C	



3-Gbps (3G)-SDI, Automatically adapts to SMPTE and ITU digital video standards for 3G-SDI, HD-SDI, and SDI



Display an X-Y plot of two signals, revealing the detailed relationship between two signals. On screen display of chrominance information in Cb and Cr channels. Display can be opaque or solid against the visual display



Display the Luma(Y), Chroma(Cb/Cr) and RGB Components of the input video signal



Supports Under Monitor Display function, using TSL Protocol



Use JOG dial button (or the Up and Down cursor buttons) to highlight the function, display the items and change the setting value you want to change.



Support for VITC and LTC timecode display

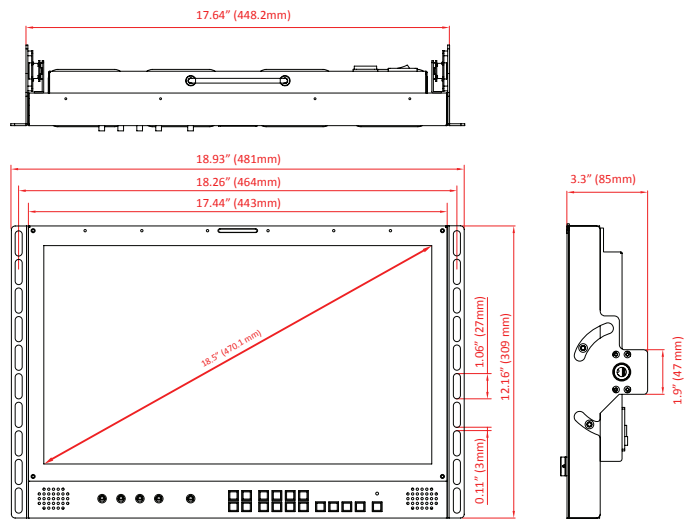


Decoder supports CEA-608(ANC, Line21) / 708

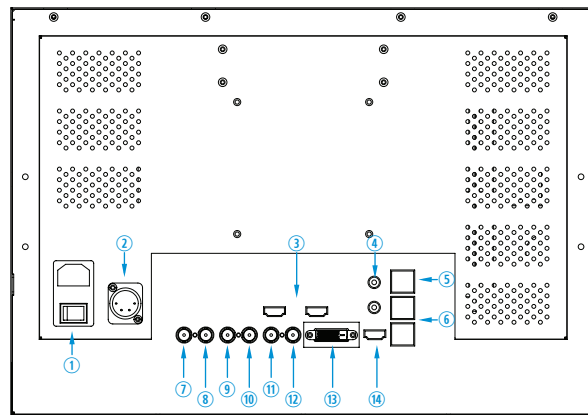


By using the ViewZ VZ-CSP software along with relatively inexpensive colorimeter such as I-One and K-10A, you can get calibration results as close to using the actual CS-2000 hardware

### DIMENSION



### INTERFACE



1. AC 100~240V In / On-Off Switch
2. DC XLR 12V In
3. HDMI In / Out
4. Audio In / Out
5. Remote In
6. RS-422 In / Out
7. SDI-A In
8. SDI-B In
9. SDI Out
10. CV1 / Y / S-Y
11. CV2 / Pb / S-C
12. CV3 / Pr
13. DVI In
14. PGM

### Contact ViewZ

- Address : 177 W. Orangethorpe Ave., Placentia, CA 92870
- Phone : (714)996-1177, Fax : (714)996-1138
- Sales : sales@viewzusa.com
- Specification subject to change without notice.