

videolarm™

A Moog Company



www.videolarm.com

PB24L58

Wireless Power-Boxes-Rugged

Installation and Operation Instructions for the following models:

PB24L58 A rugged outdoor wireless box, with a 220/110vac input and 24vac output for camera, fuse protected. With a wireless 5.8GHz access point. Omni and directional antenna. Pole mounting clips included.

All Videolarm 5.8 GHz Wi-Fi Series CPE/ AP/ Routers

Before attempting to connect or operate this product, please read these instructions completely.

81-IN5415
12-12-2008

IMPORTANT SAFEGUARDS

- 1 Read these instructions.
- 2 Keep these instructions.
- 3 Heed all warnings
- 4 Follow all instructions.
- 5 Do not use this apparatus near water.
- 6 Clean only with damp cloth.
- 7 Do not block any of the ventilation openings. Install in accordance with the manufacturers instructions.
- 8 Cable Runs- All cable runs must be within permissible distance.
- 9 Mounting - This unit must be properly and securely mounted to a supporting structure capable of sustaining the weight of the unit.

Accordingly:

- a. The installation should be made by a qualified installer.
 - b. The installation should be in compliance with local codes.
 - c. Care should be exercised to select suitable hardware to install the unit, taking into account both the composition of the mounting surface and the weight of the unit.
- 10 Do not install near any heat sources such as radiators, heat registers, stoves, or other apparatus (including amplifiers) that produce heat.
 - 11 Do not defeat the safety purpose of the polarized or grounding-type plug. A polarized plug has two blades with one wider than the other. A grounding type plug has two blades and a third grounding prong. The wide blade or the third prong are provided for your safety. When the provided plug does not fit into your outlet, consult an electrician for replacement of the obsolete outlet.
 - 12 Protect the power cord from being walked on or pinched particularly at plugs, convenience receptacles, and the point where they exit from the apparatus.
 - 13 Only use attachment/ accessories specified by the manufacturer.
 - 14 Use only with a cart, stand, tripod, bracket, or table specified by the manufacturer, or sold with the apparatus. When a cart is used, use caution when moving the cart/ apparatus combination to avoid injury from tip-over.
 - 15 Unplug this apparatus during lighting storms or when unused for long periods of time.
 - 16 Refer all servicing to qualified service personnel. Servicing is required when the apparatus has been damaged in any way, such as power-supply cord or plug is damaged, liquid has been spilled or objects have fallen into the apparatus, the apparatus has been exposed to rain or moisture, does not operate normally, or has been dropped.

Be sure to periodically examine the unit and the supporting structure to make sure that the integrity of the installation is intact. Failure to comply with the foregoing could result in the unit separating from the support structure and falling, with resultant damages or injury to anyone or anything struck by the falling unit.

UNPACKING

Unpack carefully. Electronic components can be damaged if improperly handled or dropped. If an item appears to have been damaged in shipment, replace it properly in its carton and notify the shipper.

Be sure to save:

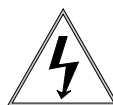
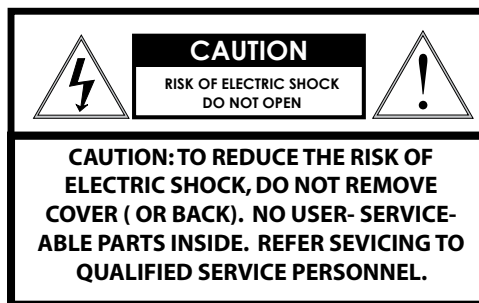
- 1 The shipping carton and packaging material. They are the safest material in which to make future shipments of the equipment.
- 2 These Installation and Operating Instructions.

SERVICE

If technical support or service is needed, contact us at the following number:

TECHNICAL SUPPORT
AVAILABLE 24 HOURS
1 - 800 - 554 - 1124

SAFETY PRECAUTIONS



The lightning flash with an arrowhead symbol, within an equilateral triangle, is intended to alert the user to the presence of non-insulated "dangerous voltage" within the product's enclosure that may be of sufficient magnitude to constitute a risk to persons.

Este símbolo se piensa para alertar al usuario a la presencia del "voltaje peligroso no-aislado" dentro del recinto de los productos que puede ser un riesgo de choque eléctrico.

Ce symbole est prévu pour alerter l'utilisateur à la présence "de la tension dangereuse" non-isolée dans la clôture de produits qui peut être un risque de choc électrique.

Dieses Symbol soll den Benutzer zum Vorhandensein der nicht-Isolier "Gefährdungsspannung" innerhalb der Produkteinschließung alarmieren die eine Gefahr des elektrischen Schlages sein kann.

Este símbolo é pretendido alertar o usuário à presença "di tensão perigosa non-isolada" dentro do cerco dos produtos que pode ser um risco de choque elétrico.

Questo simbolo è inteso per avvertire l'utente alla presenza "di tensione pericolosa" non-isolata all'interno della recinzione dei prodotti che può essere un rischio di scossa elettrica.



The exclamation point within an equilateral triangle is intended to alert the user to presence of important operating and maintenance (servicing) instructions in the literature accompanying the appliance.

Este símbolo del punto del exclamation se piensa para alertar al usuario a la presencia de instrucciones importantes en la literatura que acompaña la aplicación.

Ce symbole de point d'exclamation est prévu pour alerter l'utilisateur à la présence des instructions importantes dans la littérature accompagnant l'appareil.

Dieses Ausruf Punktsymbol soll den Benutzer zum Vorhandensein de wichtigen Anweisungen in der Literatur alarmieren, die das Gerät begleitet.

Este símbolo do ponto do exclamation é pretendido alertar o usuário à presença de instruções importantes na literatura que acompanha o dispositivo.

Questo simbolo del punto del exclamation è inteso per avvertire l'utente alla presenza delle istruzioni importanti nella letteratura che accompagna l'apparecchio.



LIMITED WARRANTY FOR VIDEOLARM INC. PRODUCTS

VIDEOLARM INC. warrants this Product to be free from defects in material or workmanship, as follows:

PRODUCT CATEGORY	PARTS	LABOR
All Enclosures and Electronics	Five (5) Years	Five (5) Years
Pan/Tilts	Three (3) Years **6 months if used in autoscan /tour operation	Three (3) Years **6 months if used in autoscan /tour operation
Poles/PoleEvators	Three (3) Years	Three (3) Years
Warrior/Q-View/I.R. Illuminators	Five (5) Years	Five (5) Years
SView Series	Five (5) Years **6 months if used in autoscan /tour operation	Five (5) Years **6 months if used in autoscan /tour operation
Controllers	Five (5) Years	Five (5) Years
Power Supplies	Five (5) Years	Five (5) Years
Accessory Brackets	Five (5) Years	Five (5) Years

During the labor warranty period, to repair the Product, Purchaser will either return the defective product, freight prepaid, or deliver it to Videolarm Inc. Decatur GA. The Product to be repaired is to be returned in either its original carton or a similar package affording an equal degree of protection with a RMA # (Return Materials Authorization number) displayed on the outer box or packing slip. To obtain a RMA# you must contact our Technical Support Team at 800.554.1124, extension 101. Videolarm will return the repaired Product freight prepaid to Purchaser. Videolarm is not obligated to provide Purchaser with a substitute unit during the warranty period or at any time. After the applicable warranty period, Purchaser must pay all labor and/or parts charges.

The limited warranty stated in these product instructions is subject to all of the following terms and conditions:

TERMS AND CONDITIONS

1. NOTIFICATION OF CLAIMS: WARRANTY SERVICE: If Purchaser believes that the Product is defective in material or workmanship, then written notice with an explanation of the claim shall be given promptly by Purchaser to Videolarm but all claims for warranty service must be made within the warranty period. If after investigation Videolarm determines that the reported problem was not covered by the warranty, Purchaser shall pay Videolarm for the cost of investigating the problem at its then prevailing per incident billable rate. No repair or replacement of any Product or part thereof shall extend the warranty period as to the entire Product. The specific warranty on the repaired part only shall be in effect for a period of ninety (90) days following the repair or replacement of that part or the remaining period of the Product parts warranty, whichever is greater.

2. EXCLUSIVE REMEDY: ACCEPTANCE: Purchaser's exclusive remedy and Videolarm's sole obligation is to supply (or pay for) all labor necessary to repair any Product found to be defective within the warranty period and to supply, at no extra charge, new or rebuilt replacements for defective parts.

3. EXCEPTIONS TO LIMITED WARRANTY: Videolarm shall have no liability or obligation to Purchaser with respect to any Product requiring service during the warranty period which is subjected to any of the following: abuse, improper use: negligence, accident, lightning damage or other acts of God (i.e., hurricanes, earthquakes), modification, failure of the end-user to follow the directions outlined in the product instructions, failure of the end-user to follow the maintenance procedures recommended by the International Security Industry Organization, written in product instructions, or recommended in the service manual for the Product. Furthermore, Videolarm shall have no liability where a schedule is specified for regular replacement or maintenance or cleaning of certain parts (based on usage) and the end-user has failed to follow such schedule; attempted repair by non-qualified personnel; operation of the Product outside of the published environmental and electrical parameters, or if such Product's original identification (trademark, serial number) markings have been defaced, altered, or removed. Videolarm excludes from warranty coverage Products sold AS IS and/or WITH ALL FAULTS and excludes used Products which have not been sold by Videolarm to the Purchaser. All software and accompanying documentation furnished with, or as part of the Product is furnished "AS IS" (i.e., without any warranty of any kind), except where expressly provided otherwise in any documentation or license agreement furnished with the Product.

4. PROOF OF PURCHASE: The Purchaser's dated bill of sale must be retained as evidence of the date of purchase and to establish warranty eligibility.

DISCLAIMER OF WARRANTY

EXCEPT FOR THE FOREGOING WARRANTIES, VIDEOLARM HEREBY DISCLAIMS AND EXCLUDES ALL OTHER WARRANTIES, EXPRESS OR IMPLIED, INCLUDING, BUT NOT LIMITED TO ANY AND/OR ALL IMPLIED WARRANTIES OF MERCHANTABILITY, FITNESS FOR A PARTICULAR PURPOSE AND/OR ANY WARRANTY WITH REGARD TO ANY CLAIM OF INFRINGEMENT THAT MAY BE PROVIDED IN SECTION 2-312(3) OF THE UNIFORM COMMERCIAL CODE AND/OR IN ANY OTHER COMPARABLE STATE STATUTE. VIDEOLARM HEREBY DISCLAIMS ANY REPRESENTATIONS OR WARRANTY THAT THE PRODUCT IS COMPATIBLE WITH ANY COMBINATION OF NON-VIDEOLARM PRODUCTS OR NON-VIDEOLARM RECOMMENDED PRODUCTS PURCHASER CHOOSES TO CONNECT TO PRODUCT.

LIMITATION OF LIABILITY

THE LIABILITY OF VIDEOLARM, IF ANY, AND PURCHASER'S SOLE AND EXCLUSIVE REMEDY FOR DAMAGES FOR ANY CLAIM OF ANY KIND WHATSOEVER, REGARDLESS OF THE LEGAL THEORY AND WHETHER ARISING IN TORT OR CONTRACT, SHALL NOT BE GREATER THAN THE ACTUAL PURCHASE PRICE OF THE PRODUCT WITH RESPECT TO WHICH SUCH CLAIM IS MADE. IN NO EVENT SHALL VIDEOLARM BE LIABLE TO PURCHASER FOR ANY SPECIAL, INDIRECT, INCIDENTAL, OR CONSEQUENTIAL DAMAGES OF ANY KIND INCLUDING, BUT NOT LIMITED TO, COMPENSATION, REIMBURSEMENT OR DAMAGES ON ACCOUNT OF THE LOSS OF PRESENT



Electrical Specifications

PB24L58



English

Input Power: 120 VAC/240VAC 1A/.5A Power Consumption: 1Amp (120 Watts) at 120 VAC Power Output: 84 VA at 24 VAC 52 Watts Heater/Blower 32 Watts Camera Power

An all pole main switch with a contact of at least 3mm in each pole shall be incorporated in the electrical installation of the building.

Tools Required: .150" Flathead Screwdriver 7/16 Wrench or Socket 9/16 Wrench or Socket



Español

Energía De Entrada: 120 Consumo De Energía de VAC/240VAC 1A/.5A: 1Amp (120 vatios) en 120 VAC de salida de energía: VA 84 en 24 VAC 52 vatios de Heater/Blower 32 vatios de energía de la cámara fotográfica

Todo el interruptor principal del poste con un contacto de por lo menos 3m en cada poste será incorporado en la instalación eléctrica del edificio.

Herramientas Requeridas: destornillador de cabeza llana del 150"7/16 llave de la llave o del zócalo 9/16 o zócalo



Français

Puissance D'entrée : 120 Puissance D'Énergie de VAC/240VAC 1A/.5A : 1Amp (120 watts) à 120 VCA de rendement de puissance : VA 84 à 24 VCA 52 watts de Heater/Blower 32 watts de puissance d'appareil-photo

Un tout le commutateur principal de poteau avec un contact au moins de 3mm dans chaque poteau sera incorporé dans l'installation électrique du bâtiment.

Outils Requis : tournevis à tête plate de 150"7/16 clé de clé ou de douille 9/16 ou douille



Deutsch

Zugeführte Energie: 120 VAC/240VAC 1A/.5A Leistungsaufnahme: 1Amp (120 Watt) bei 120 VAC Abgabeleistung: VA 84 bei 24 VAC 52 Watt Heater/Blower 32 Watt Kamera-Energie

Ein aller Pfostenhauptschalter mit einem Kontakt von 3mm mindestens in jedem Pfosten wird in der elektrischen Installation des Gebäudes enthalten.

Werkzeuge Erforderten: 150"Flachkopfschraubenzieher 7/16 Schlüssel-oder Einfeldung 9/16 Schlüssel oder Einfeldung



Portuguese

Poder De Entrada: 120 Consumo De Potência de VAC/240VAC 1A/.5A: 1Amp (120 watts) em 120 VAC de saída de poder: VA 84 em 24 VAC 52 watts de Heater/Blower 32 watts de poder da câmera

Todo o interruptor principal do pólo com um contato ao menos de 3mm em cada pólo será incorporado na instalação elétrica do edifício.

As Ferramentas Requereram: chave de fenda flathead do 150"7/16 de chave da chave ou do soquete 9/16 ou soquete



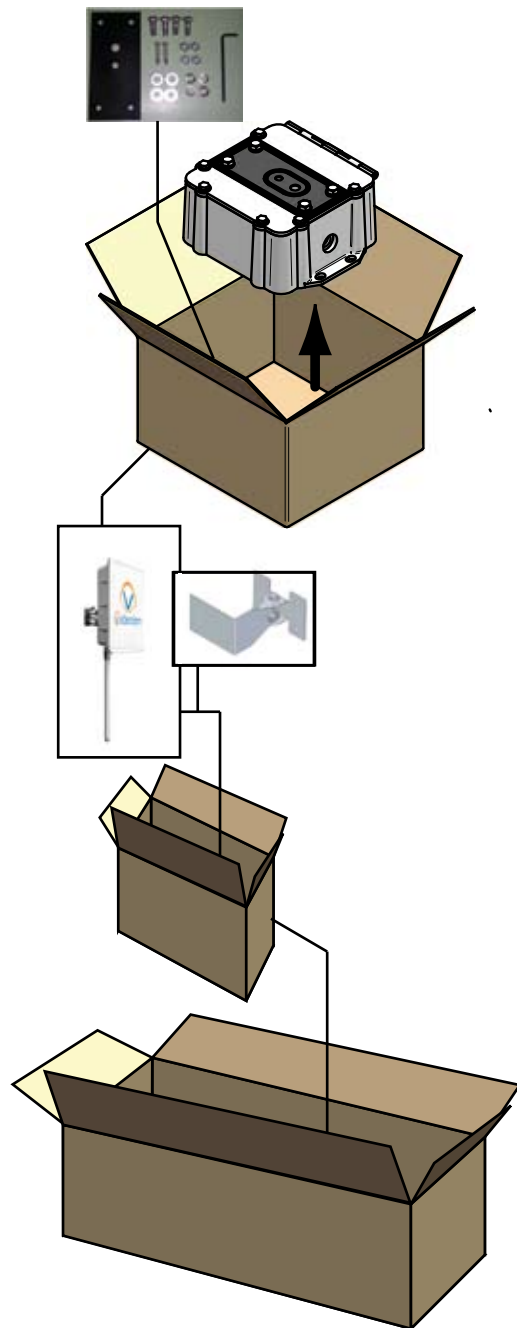
Italiano

Alimentazione in ingresso Di Entrata: 120 Assorbimento di corrente Di energia di VAC/240VAC 1A/.5A: 1Amp (120 watt) a 120 VCA di uscita di alimentazione: VA 84 a 24 VCA 52 watt di Heater/Blower 32 watt di alimentazione della macchina fotografica

Tutto l'interruttore principale del palo con un contatto almeno di 3mm in ogni palo sarà compreso nell'installazione elettrica della costruzione.

Attrezzi Richiesti: cacciavite a testa piatta del 150"7/16 di chiave dallo zoccolo o dalla chiave 9/16 o zoccolo

Contents of Box

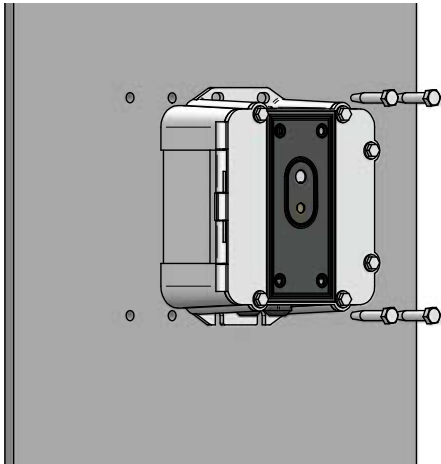


GENERAL INSTRUCTIONS (Mechanical):

Tools Required (minimum)

.150" Flat head Screwdriver
7/16" Wrench or Socket
9/16" Wrench or Socket

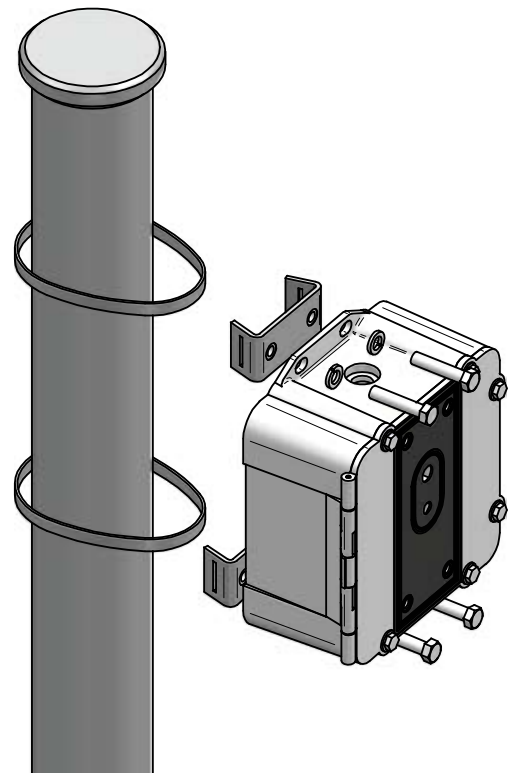
1



Wall Mounting: Attach unit securely with (4) 5/16" - 3/8" or 8mm hardware (not supplied).

- A template is provided in the instructions with the 2 x 8 bolt pattern required for the mounting of this product.
- Each fastener should be able to withstand a minimum pull out force of 600 lbs. (272kg)

2



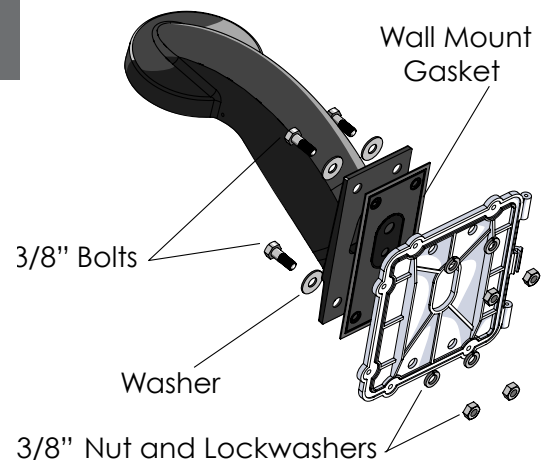
The power box may be pole mounted with the pole support clips.

3

Connecting Housing to the Power Box

- Open packet assembly.
- Special 3/8" bolts are provided and designed to mount either the WM20G or the WM10 (Standard Fusion Dome and Rugged Housing wall mount bracket) to the Power box
- Assemble wall mount bracket and housing as shown in the next block.
- Push the cable assembly connectors through either of the (2) holes provided.

4



The wall mount bracket must be attached using the gasket as shown.

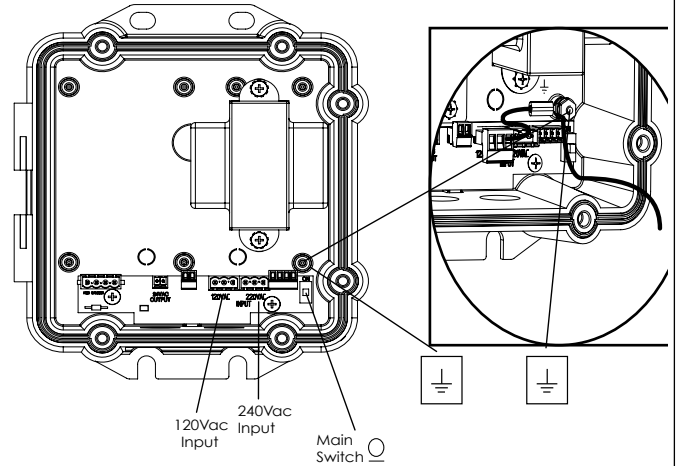
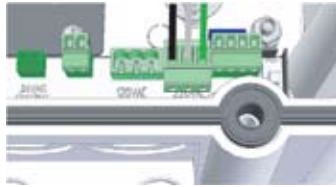
- **IMPROTANT!** Unit will not seal properly unless installed as shown above. Do not attempt to use power box without installing wall mount gasket.
- **NOTE:** Housing and complete Power Box are not shown in illustration for clarity only.

5 INPUT: (120VAC or 240VAC)



110-120VAC INPUT

220-240VAC INPUT



Line (L) and Neutral (N) wires should be connected as marked on the board and plugged into the corresponding voltage for the input single phase.

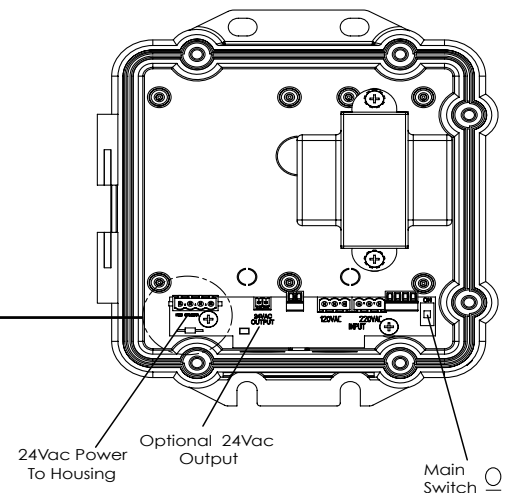
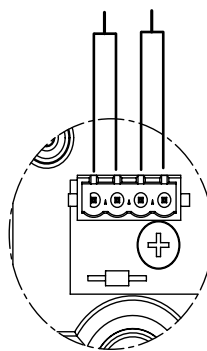
- Los alambres de la línea (l) y del hilo neutro (n) se deben conectar según lo marcados en el tablero y tapados en el voltaje correspondiente para la monofásico de la entrada.
- Des fils de la ligne (l) et du neutre (n) devraient être reliés comme marqué sur le conseil et branché à la tension correspondante pour le monophasé d'entrée.
- Linie (L) und des Neutralen (N) Leitungen sollten angeschlossen werden, wie auf dem Brett gekennzeichnet worden und in die entsprechende Spannung für das Eingang einphasige verstopft.
- Os fios da linha (L) e do ponto morto (N) devem ser conectados como marcados na placa e plugged na tensão correspondente para a fase monofásica da entrada.
- I legare della linea (l) e del neutrale (n) dovrebbero essere collegati come contrassegnato sul bordo ed inserito la tensione corrispondente per la monofase dell'input.

6 OUTPUT: (24VAC)

Connect Housing Power



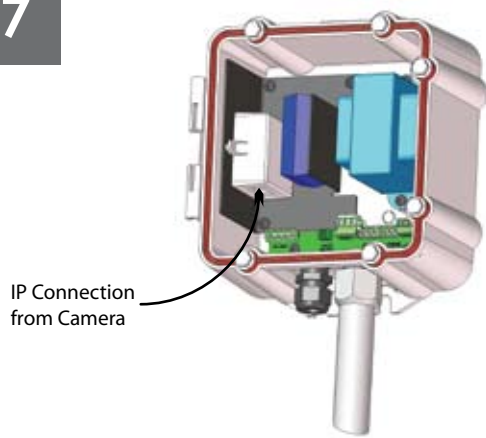
HEATERS CAMERA



Internal resettable fuses are supplied for the main 24VAC output lines. Do not connect heaters to camera output. The PB24 is not designed for 3 phase or 208V systems.

- Los fusibles restaurables internos se proveen para las líneas de salida principales 24VAC. No conecte los calentadores con la salida de la cámara fotográfica. El PB24 no se diseña para 3 fases o sistemas 208V.
- Des fusibles réglables internes sont fournis pour les lignes de la sortie 24VAC principales. Ne reliez pas les réchauffeurs au rendement d'appareil-photo. Le PB24 n'est pas conçu pour 3 phases ou systèmes 208V.
- Interne rückstellbare Sicherungen werden für die Haupt-24VAC Ertragskurven geliefert. Schließen Sie Heizungen nicht an Kameraausgang an. Das PB24 ist nicht für 3 Phase oder Systeme 208V bestimmt.
- Os fusíveis resettable internos são fornecidos para as linhas de saída 24VAC principais. Não conecte calefatos à saída da câmera. O PB24 não é projetado para 3 fases ou sistemas 208V.
- I fusibili resettable interni sono forniti per le linee di uscita principali 24VAC. Non colleghi i riscaldatori all'uscita della macchina fotografica. Il PB24 non è progettato per 3 fase o sistemi 208V.

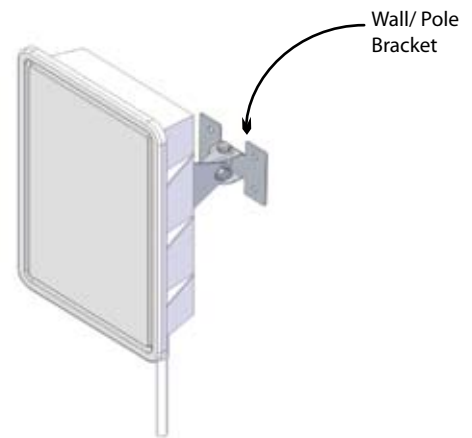
7



Connect IP cable from camera.

- Conecte el cable del IP de la cámara.
- Reliez le câble d'IP de l'appareil-photo.
- Schließen Sie IP-Kabel von der Kamera an.
- Conecte o cabo do IP da câmara.
- Collegli il cavo del IP dalla macchina fotografica.

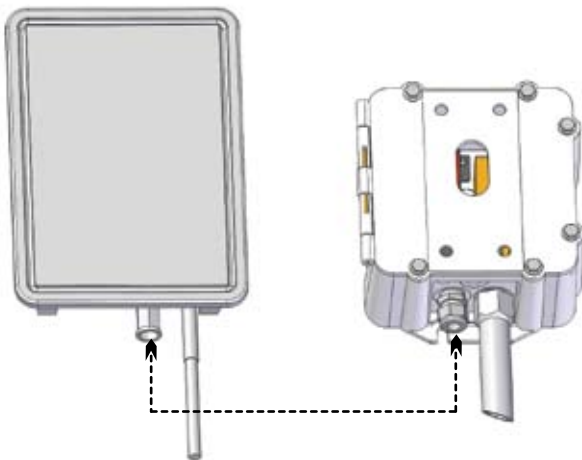
8



Attach the client (transmitter) on wall or pole with the adapter supplied.

- Ate el cliente (transmisor) en la pared o el poste con el adaptador suministrado.
- Attachez le client (émetteur) sur le mur ou le poteau avec l'adaptateur fourni.
- Bringen Sie den Klienten (Übermittler) auf Wand oder Pfosten mit dem gelieferten Adapter an.
- Una o cliente (transmissor) na parede ou o pólo com o adaptador fornecido.
- Attacchi il cliente (trasmettitore) sulla parete o il palo con l'adattatore fornito.

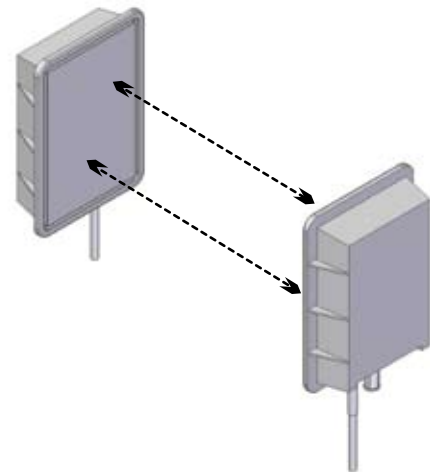
9



Connect IP cable between power.

- Conecte el cable del IP entre la energía.
- Reliez le câble d'IP entre la puissance.
- Schließen Sie IP-Kabel zwischen Energie an.
- Conecte o cabo do IP entre o poder.
- Collegli il cavo del IP fra potere.

10



When using omni directional antenna, the AP unit and client should be aimed towards each other.

- Al usar la antena direccional del omni, la unidad del AP y el cliente se deben estar dirigido hacia uno a.
- À l'aide de l'antenne directrice d'omni, l'unité d'AP et le client devraient être visés vers l'un l'autre.
- Wenn man omni Richtantenne verwendet, sollten die AP-Maßeinheit und der Klient in Richtung zu einander gezielt werden.
- Ao usar a antena direccional do omni, a unidade do AP e o cliente devem ser apontados para se.
- Nel per mezzo dell'antenna direzionale di omni, l'unità di AP ed il cliente dovrebbero essere mirati verso a vicenda.

1

Product Description



The PB24L58 is a Wi-Fi Station with WPA and WPA2 supplicant support. It is specially designed to act as a Transparent Wireless Bridge that associates to a service provider and authenticates using 802.1x, if required, on start up.

1.1

Product Features

- ☐ 10/100 Ethernet interface with auto-crossover detection
- ☐ High Power outdoor access point and adjustable transmit power
- ☐ WPA/WPA2- Personal and WPA/WPA2- Enterprise support
- ☐ Specially designed for transparent Internet access

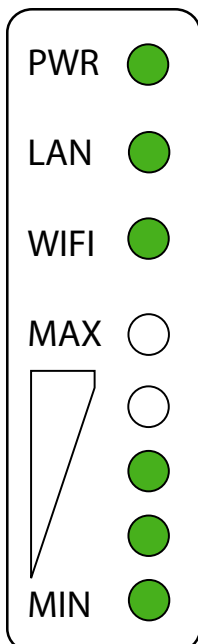


1.3 Hardware Setup



1. Attach the antenna provided to the left most antenna connector.
2. Connect the LAN port to the computer Ethernet port with an Ethernet cable.
3. Connect the end of the included power adapter to the power socket on the PB24L58.
4. Power on the power adaptor.

1.3 LED Description



LED	Color	Status	Description
PWR	Green	On	Power is on
		Off	Power is off
LAN	Green	On	Ethernet is connected
		Off	Ethernet is not connected
Wi-Fi	Green	On	Associated with an access point. The number of LED lights from "MIN" to "MAX" indicates the received signal strength level .
		Off	Not associated with any access point.

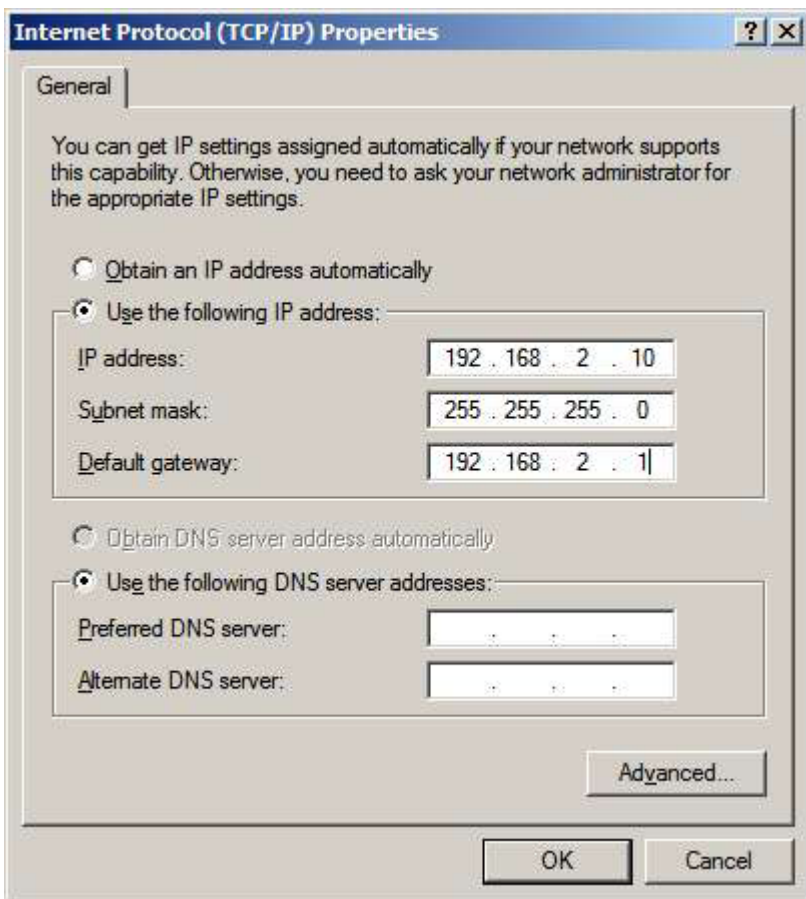
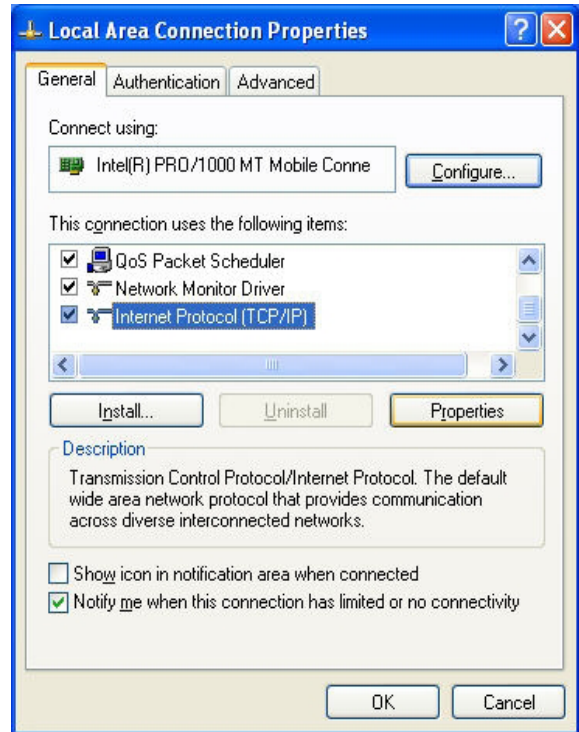
2 Using the PB24L58



2.1 Pre-configuring PC Setup

Prior to the PB24L58 configuration, a computer with its Local Area Connection set to a static IP address is required to pre-configure to the same subnet as the Mesh Connector (i.e. 192.168.2.X).

In order to do so, select the "Start" menu, "Control Panel" and then "Network Connections". Right click on the "Local Area Connection" icon, choose "Properties", and double click on the item "Internet Protocol (TCP/IP)" from the list as shown in the diagram below:



An 'Internet Protocol (TCP/IP) Properties' screen will pop up and set it as follows:

Click the "OK" button to confirm the change. Now you are ready to start the first time configuration of the PB24L58.

2.2 First Time Setup

On your PC, start a web browser, e.g. Internet Explorer, Mozilla Firefox, etc.
Enter the URL as follows:

<http://192.168.2.100/>

The page will look like this.



Click the "Advanced Config" button to enter the parameters of the access point to associate to.

In the field "SSID" under Wireless Settings, input the access point's SSID (sometimes it is called the "network name"). According to the setting of the Access Point you are associating to, you may choose a different "Authentication setting".

If "Static WEP key" or "WPA/WPA2-Personal" is selected for Authentication, input the Encryption Key field as well. If "WPA/WPA2-Enterprise" is selected, please refer to 4.3.5 for more detail.
Click the "Save" button at the bottom to complete.

You can now click the "Connect" link on the top bar and then click the "Connect" button to associate with the access point.



At this point, the PB24L58 is associated with the access point

2.3 Settings Details

The PB24L58 is configured via the CPE Setup tab. The following sections will provide information as a guide through the configuration.

2.3.1 Wireless Settings

LAN Interface	IP Address	192.168.2.100
	Subnet mask	255.255.255.0

LAN Interface: To configure the LAN interface's IP address and subnet mask.

SSID: To configure the SSID / ESSID / Network Name of the wireless network to associate to. The default SSID is VIDEOLARM.

NOTE – If the default SSID is changed, it must be changed on ALL wireless devices on the network in order for the Mesh network to work as intended.

Radio Mode: It allows the user to choose between radio modulations support for example, 802.11a only. The available settings depend on the Wi-Fi module installed on the device.

Bit Rate: This setting can fix the 802.11 transmit bit rate. Available options depend on the Radio Mode chosen. If “auto” is chosen, the device will choose the best bit rate dynamically and automatically.

Wireless Settings	SSID	VIDEOLARM (MySSID)
	Radio Mode	802.11a only
	Channel Scanning Mode	Full
	Bit Rate	auto Mbps (auto)
	Authentication	Open (open)
	Encryption Key	None
	PolePoint Bridging Support	<input type="radio"/> Enable <input checked="" type="radio"/> Disable
	Transmit Power Adjustment	default (default)
	Preferred AP	MAC <input type="text"/> (e.g. 00116E1014A0) Min Signal Strength <input type="text"/> dBm (e.g. -75)

Authentication: Available options are Open, Static WEP Key, WPA/WPA2-Personal, and WPA/WPA2-Enterprise. The selection should correspond to the setting of the access point you are associating it to. The transferred data is then encrypted under all modes except in Open mode. When Static WEP Key or WPA/WPA2-Personal is chosen, you should enter an encryption key in the Encryption Key field. When WPA/WPA2-Enterprise is chosen, the specified radius server settings are required.

Preferred AP: The MAC address of a preferred access point can be entered here. First, the preferred access point is found and its signal strength must be higher than the “Min Signal Strength.” Then it will connect to this preferred access point regardless of the other access points found, even if they have higher signal strengths or the same SSID.

Wireless IP Settings	<input checked="" type="radio"/> Configure Manually	
	IP Address	192.168.2.101
	Subnet Mask	255.255.255.0
	Default Gateway	192.168.2.1
	Preferred DNS Server	0.0.0.0
	Alternate DNS Server	0.0.0.0
	<input type="radio"/> Obtain an IP Address automatically	
MTU Size		1500

IP Settings: The IP address can be obtained automatically or configured manually. If you choose to manually configure the IP address for your unit, enter the fields "IP Address", "Subnet Mask", "Default Gateway", "Preferred DNS Server" and "Alternate DNS Server".

MTU Size: You may also set the MTU Size to increase the data packet size your PB24L58 can handle at one time.

WAI Redirection	<input checked="" type="radio"/> Enable <input type="radio"/> Disable (Note: you need to reboot CPE for this change to take effect)
Web Password Protection	<input type="radio"/> Enable <input checked="" type="radio"/> Disable
	Password: ***** (admin) (Note: login name is "root")
Restore Factory Settings	<button>Restore & Reboot</button>
Reboot CPE	<button>Reboot</button>

WAI Redirection: If the device is not connected to an access point, and the user is accessing an Internet web site, the settings control whether or not to redirect web access to the web admin interface page. If this feature is disabled and the device is not connected, the browser will show a web access error message. The user can still access the web admin interface by accessing to the device's LAN IP address. By default, the LAN IP address is set as http://192.168.2.100.

Web Password Protection: If this feature is enabled, users will be required for login name and password to the Advanced Config page. The default login name is root, and the default password is admin.

Restore Factory Settings: To restore the device to default settings. When this option is clicked, default settings will be restored and the unit will be restarted.

Reboot CPE: To restart the device.

2.3.3 Available Access Point Settings

The available Access Point (AP) settings for the Integrated Wi-Fi Access Point functionality are as follows:

Disable

Integrated Wi-Fi Access Point functionality is disabled

Configure Manually

Manual configuration of the SSID, Authentication, and Encryption Key values corresponding to the Access Point.

Configure Automatically

The SSID, Authentication, and Encryption Key values corresponding to the Access Point are automatically configured to be the same as the respective values that correspond to a VLRL58.

2.3.4 Access Point Disabled

AP Settings	<input checked="" type="radio"/> Disable	
	<input type="radio"/> Configure Manually	
	<input type="radio"/> Configure Automatically	
	AP Transmit Power Adjustment	default (default)

Access Point disabled, as shown with the red marker box

2.3.5 Manual Access Point Configuration

AP Settings	<input type="radio"/> Disable	
	<input checked="" type="radio"/> Configure Manually	
	AP SSID	Indoor_SSID (Indoor_SSID)
	Authentication	Open (open)
	Encryption Key	None
	Broadcast SSID	<input checked="" type="radio"/> Enable <input type="radio"/> Disable
	<input type="radio"/> Configure Automatically	
	AP Transmit Power Adjustment	default (default)

Manual Access Point Configuration, as shown with the red marker box

In Manual Configuration mode, the **SSID** is manually entered.

Authentication can be one of three configurable values:

Open

For Open Authentication Mode, no Encryption Key is necessary.

Static WEP Key

For **Static WEP Key** Authentication Mode, a 64- or 128-bit Encryption Key is required, and can be entered in either an ASCII or HEX representation.

AP Settings	<input type="radio"/> Disable	
	<input checked="" type="radio"/> Configure Manually	
	AP SSID	Indoor_SSID (Indoor_SSID)
	Authentication	Static WEP Key (open)
	Encryption Key	***** (empty) ASCII: 5 characters for 64-bit, 13 characters for 128-bit HEX: 10 characters for 64-bit, 26 characters for 128-bit [0-F]
	Broadcast SSID	<input checked="" type="radio"/> Enable <input type="radio"/> Disable
	<input type="radio"/> Configure Automatically	
	AP Transmit Power Adjustment	default (default)

Static WEP Key Authentication Configuration

WPA/WPA2-Personal

For **WPA/WPA2-Personal** Authentication Mode, an Encryption Key, of at least 8 characters, is required.

AP Settings	<input type="radio"/> Disable	
	<input checked="" type="radio"/> Configure Manually	
	AP SSID	Indoor_SSID (Indoor_SSID)
	Authentication	WPA/WPA2-Personal (open)
	Encryption Key	***** (empty) (at least 8 characters)
	Broadcast SSID	<input checked="" type="radio"/> Enable <input type="radio"/> Disable
	<input type="radio"/> Configure Automatically	
	AP Transmit Power Adjustment	default (default)

WPA/WPA2-Personal Authentication Configuration

WPA/WPA2-Enterprise

For **WPA/WPA2-Enterprise** Authentication Mode, Radius Server information is needed.

In the **Radius Server Host** field, enter the server IP address specified for authentication and accounting. Then enter the **secret** for accessing the Radius server.

Authentication Port specifies the UDP port number for the Authentication port of the Radius server. **Accounting Port** specifies the UDP port number for the Accounting port of the Radius server.

AP Settings	<input type="radio"/> Disable	
	<input checked="" type="radio"/> Configure Manually	
	AP SSID	Indoor_SSID (Indoor_SSID)
	Authentication	WPA/WPA2-Enterprise (open)
	Encryption Key	None
	Radius Server Host	0.0.0.0 (0.0.0.0)
	Radius Secret	empty (empty)
	Authentication Port	1812 (1812)
	Accounting Port	1813 (1813)
	Broadcast SSID	<input checked="" type="radio"/> Enable <input type="radio"/> Disable
	<input type="radio"/> Configure Automatically	
AP Transmit Power Adjustment	default (default)	

WPA/WPA2-Enterprise Authentication Configuration

Broadcast SSID can be one of two configurable values:

Enable

The configured SSID will be broadcast such that it can be detected by an SSID scan.

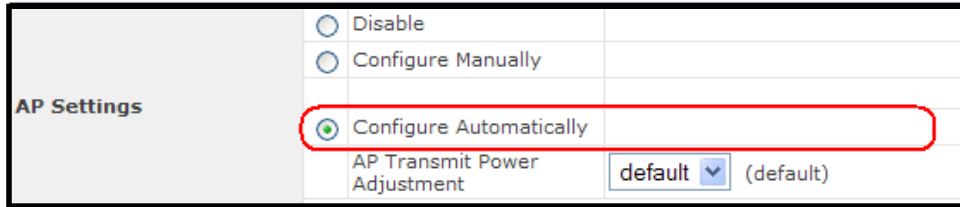
Disable

The configured SSID will not be broadcast such that it cannot be detected by an SSID scan. In order to connect with the access point, the SSID needs to be known by the client.

By default, **the AP Transmit Power Adjustment** is set around 15dBm. The user-defined transmit power would optimize your access point coverage range.

AP Settings	<input type="radio"/> Disable	
	<input checked="" type="radio"/> Configure Manually	
	AP SSID	Indoor_SSID (Indoor_SSID)
	Authentication	Open (open)
	Encryption Key	None
	Broadcast SSID	<input checked="" type="radio"/> Enable <input type="radio"/> Disable
	<input type="radio"/> Configure Automatically	
	AP Transmit Power Adjustment	-8 dB (default)

2.3.6 Automatic Access Point Configuration



The screenshot shows the 'AP Settings' section of a web interface. It contains three radio button options: 'Disable', 'Configure Manually', and 'Configure Automatically'. The 'Configure Automatically' option is selected and highlighted with a red rectangular box. Below these options is a label 'AP Transmit Power Adjustment' followed by a dropdown menu set to 'default' and the text '(default)'.

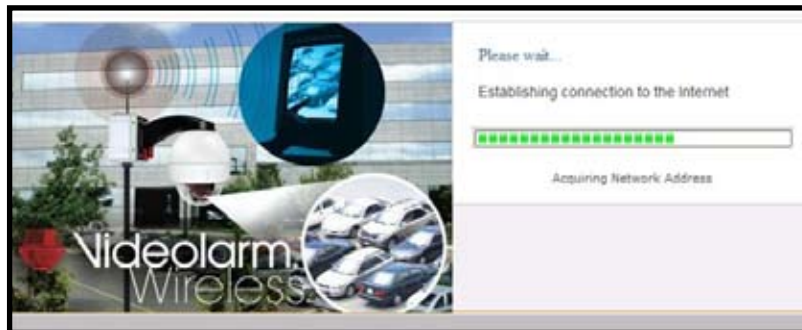
Auto. Access Point Configuration, as shown with the red marker box

With the Access Point Configuration set to **Configure Automatically**, the **SSID**, **Authentication**, and **Encryption Key** values of Integrated Wi-Fi Access Point will be configured to be the same as in the **Wireless Settings** section.

This configuration mode is effectively equivalent to directly connecting 802.11a devices on the customers' premises with a VLRL58.

2.4 Test the Setup

To test the setup, navigate to the PB24L58 main page (default address of <http://192.168.2.100>) and enter the user name and password. The realm (the text box next to the "@" sign) value can be left empty. Then click the Connect button.



After being connected, you should see:



2.5 Firmware Upgrade

The PB24L58 can automatically check for an available firmware version that is more updated than the software currently running on the PB24L58. This can be done in the Firmware Upgrade section.

However, it is recommended that you do not update the firmware unless specifically instructed to do so.

2.6 Restore to Default Settings

There are two ways to restore the PB24L58 to default settings.

If you are able to access the web admin interface, go to the "CPE Setup" page, and click the "Restore and Reboot" button.

Otherwise, you can also power up the unit and wait for approximately 1 minute. Then press the Reset button at the rear side of the unit using a pin and then hold it for 5 seconds. The unit will restore the settings to factory default and reboot.

3 Installation Notes



3.1 IP Addresses

Each PB24L58 unit has two IP addresses assigned to the wireless device. One IP address is designated for the LAN interface on the unit, and its default address is 192.168.2.100. The unit also has a second IP address that is assigned to the wireless connection, and its default address is 192.168.2.101.

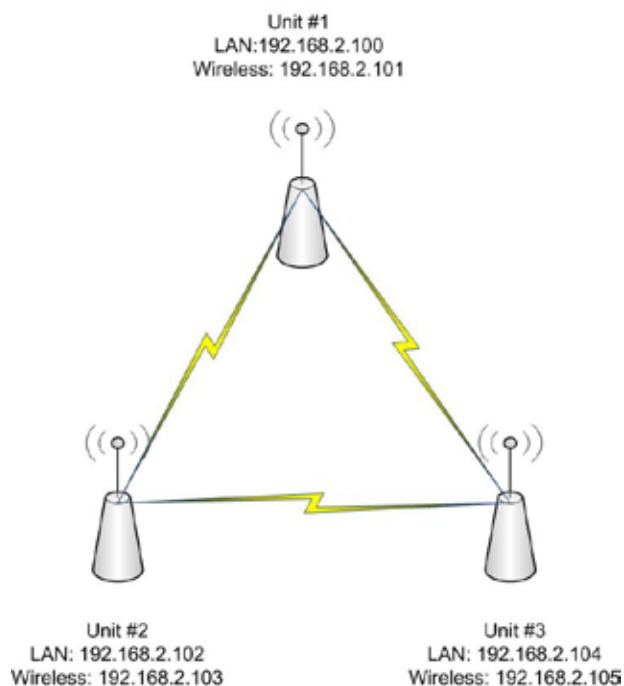
NOTE – When changing IP addresses on the PB24L58, you must remember to change both IP addresses to the new IP scheme. The wireless card needs both IP addresses to be active and in the same subnet in order for the card to work properly. For example you might need to change the LAN IP address to 172.16.0.50, so you would need to change the wireless connection IP address to 172.16.0.51.

3.1 Adding Multiple PB24L58 Devices to a Wireless Network

By default each PB24L58 is configured with the IP address of 192.168.2.100 and 192.168.2.101 for the LAN and wireless connection respectively. If there is more than one PB24L58 on the wireless network, then you will need to change the default IP addresses on each additional device. For example Unit 1 could retain the default IP addresses of 192.168.2.100 and 192.168.2.101. Unit 2 would need to have its addresses changed, so it could have 192.168.2.102 assigned to the LAN interface and 192.168.2.103 assigned to the wireless connection. Unit 3 could have addresses of 192.168.2.104 and 192.168.2.105, and so on for each additional device. The diagram below illustrates this example.

NOTE – When configuring multiple PB24L58 devices for the first time, make sure that only one device is powered on at a time. Powering on two devices with a default configuration will cause IP address conflicts on a network since each of the devices will have the same addresses assigned to their interfaces.

PB24L58 IP CONFIGURATION



3.3 Changing the Default SSID

The default SSID for the PB24L58 is VIDEOLARM. If the SSID needs to be changed from the default, then the SSID must be changed on ALL wireless devices in the network on all VLRL58 and PB24L58 devices.

3.4 Setting a Preferred Access Point

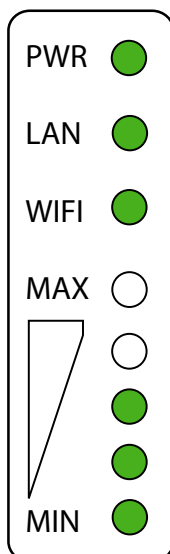
There are times when an environmental factor such as a power outage might cause a VLRL58 unit to lose connectivity to a PB24L58. When this occurs the PB24L58 unit begins operating on its own to keep the wireless network alive. Once the VLRL58 is back online, the PB24L58 may not recognize that the access point is available once again. One way to fix this condition is to reboot the PB24L58 unit and allow it to reestablish a connection with the VLRL58. It is also possible to reestablish the connection by accessing the configuration page of the PB24L58 unit and clicking on the Connect button at the main screen.

It is possible to avoid some of these issues by designating a VLRL58 unit as the preferred access point of a PB24L58 unit. When a preferred access point is assigned, the PB24L58 will continue to try to contact the downed unit until it comes back online. A preferred access point is assigned by placing the MAC address of the VLRL58's wireless interface in the Preferred Access Point box and assigning a minimum signal strength setting. It is recommended that a signal strength setting of -99 be used so that the PB24L58 will attempt to reestablish the connection no matter how weak the signal might be.



3.5 Wireless Indicator Lights

There is a set of wireless signal strength indicator lights on the back of the of the PB24L58 devices. These lights will blink from top to bottom when the units are initially powered on as the devices do a wireless "handshake" to establish a link. The lights will stay solidly lit once a connection has been established between the units. The handshake process can take a few minutes to complete, but eventually the lights should remain lit. If the lights do not remain solid after a few minutes, then the direction of the antenna may need to be changed to get a better signal between units. The set of lights on each unit goes from a range of MIN to MAX, and the number of lights lit on the unit indicates the signal strength of the connection.



LED	Color	Status	Description
PWR	Green	On	Power is on
		Off	Power is off
LAN	Green	On	Ethernet is connected
		Off	Ethernet is not connected
Wi-Fi	Green	On	Associated with an access point. The number of LED lights from "MIN" to "MAX" indicates the received signal strength level.
		Off	Not associated with any access point.

3.6

Accessing the PB24L58 from a Web Browser

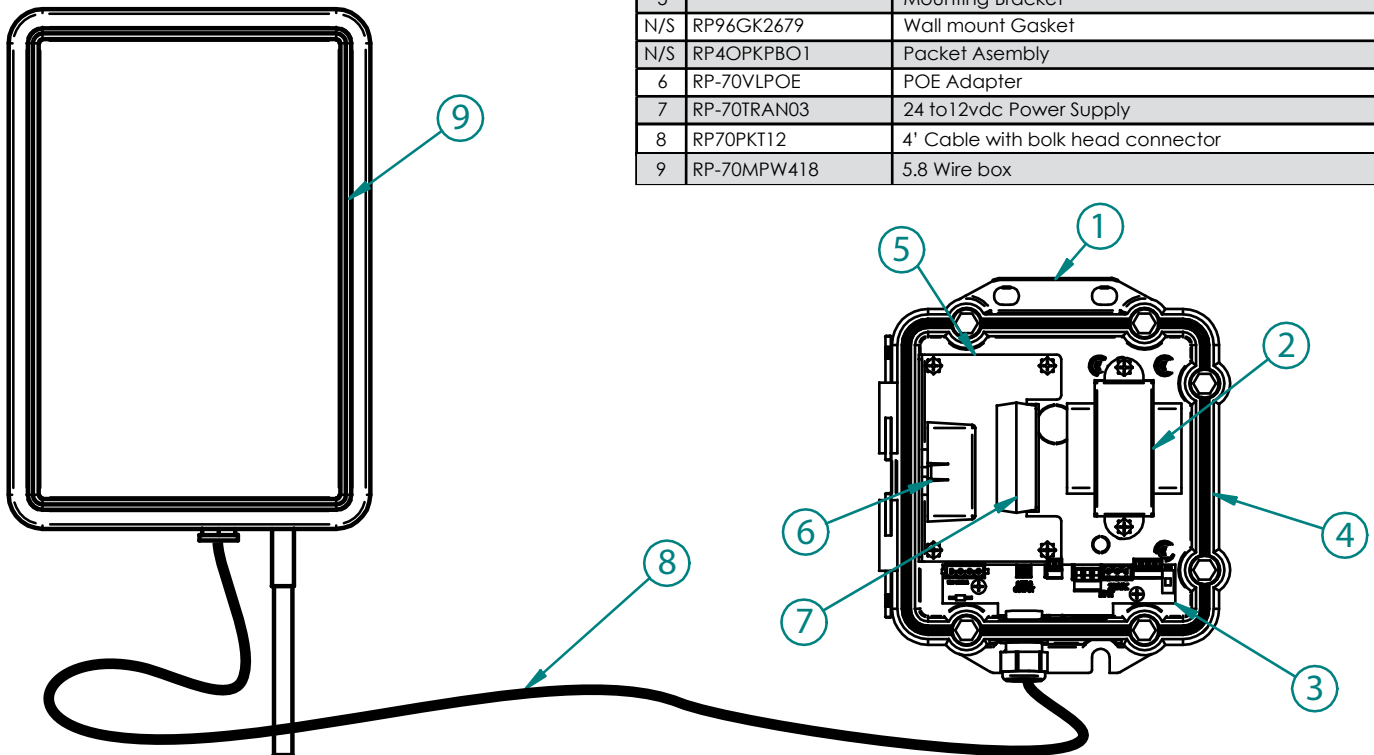
The PB24L58 may be accessed by a web browser in two different ways. If you are connecting to the device via a network patch cable and the LAN connection, then you will need connect via the IP address of the LAN Interface. The default address is <http://192.168.2.100>.

If you are connecting to the device over the wireless link once the wireless network has been established, then you will need to connect to the device using the IP address of the wireless connection. The default address is <http://192.168.2.101>.

NOTE – Accessing the device over the wireless connection requires you to enter a username and password. The default username is admin and the default password is public.

Exploded View Replacement Parts PB24L58

Part Number	Description
1	RP4OHGPB100 Main Box Assembly (including cover)
2	RP70TRAN11 Transformer
3	RP76PCBPB01 Connection PCB
4	RP96GK2680 Door Gasket
5	Mounting Bracket
N/S	RP96GK2679 Wall mount Gasket
N/S	RP4OPKPBO1 Packet Assembly
6	RP-70VLPOE POE Adapter
7	RP-70TRAN03 24 to 12vdc Power Supply
8	RP70PKT12 4' Cable with bolk head connector
9	RP-70MPW418 5.8 Wire box



Product Registration/Warranty

Thank you for choosing Videolarm. We value your patronage and are solely committed to providing you with only the highest quality products available with unmatched customer service levels that are second-to-none in the security industry.

Should a problem arise, rest assure that Videolarm stands behind its products by offering some of the most impressive warranty plans available: **3 Years** on all Housings, Poles, Power Supplies, and Accessories and **5 Years** on all camera systems (SView, QView, Warriors), and InfraRed Illuminators.



Register Your Products

Option 1: **Online** *Option 2:* **Mail-In**

Take a few moments and validate your purchase with our **Online Product Registration Form** at **www.videolarm.com/productregistration.jsp** or complete and mail-in the bottom portion of this flyer.

Register your recent Videolarm purchases and benefit from the following:

- Simple and Trouble-Free RMA process
- Added into customer database to receive product updates / news
- Eliminate the need to archive original purchase documents: Receipts, Purchase Orders, etc...



Cut at the dotted line

Place in envelope, affix stamp and mail to: **Videolarm ATTN: Warranty**
2525 Park Central Ave.
Decatur, GA 30035

Main Contact Info

First Name: _____ Last Name: _____
Professional Title: _____ Company: _____
Address 1: _____ Address 2: _____
City: _____ State / Province/Country: _____
Zip / Postal Code: _____ Phone Number: _____ E-mail Address: _____

Product Information

Please Circle One:

Business

Personal

Name & Location of Company / Store where Purchased: _____
(City, State, Country)

Videolarm Product ID _____ Product Description _____

Serial # _____
(Available only for Camera Systems, IR Illuminators, Wireless Devices)

PO# _____

Wireless IP & Mac Address Form



For your convenience and future reference, the following form has been included to record your wireless surveillance systems IP and Mac addresses. Once completed, remove the form from instruction packet and place in a secure place or inside the Videolarm wireless product. The information recorded will prove beneficial when servicing or expanding your wireless system.

Camera #	IP Address	Mac Address	Location	Password	Notes
1	192.168.2.100	00-65-29-12-12	Parking1	Root	Megapixel Cam
1					
2					
3					
4					
5					
6					
7					
8					
9					
10					
11					
12					

Wireless #	IP Address	Mac Address	Location	BSSID	Mode
1	192.168.2.1	00-08-d3-12-d2	Parking1	Videolarm	Client ch 11
1					
2					
3					
4					
5					
6					
7					
8					
9					
10					
11					
12					