

SENECA XVAULT XNVR QUICK START GUIDE

XVAULT XNVR200

This product contains software that must be registered for continued use and to enjoy the benefits of eligibility for updates. Please take the time to register the operating system and any applications installed on this product.

CONTENTS OF XVAULT XNVR200 PACKAGE

Quantity	Item
1	xNVR200 Storage Server
Up to 2	Power Cords (Dependent on power supply included)
1	Bezel with Keys
1	Serial Cable (Ships with 12, 16, and 24 Bay Models)
1	Analog BNC Fan Out Cable (Only for units with capture card)

CRITICAL INFORMATION:

DEFAULT LOG IN INFORMATION

Username: Administrator

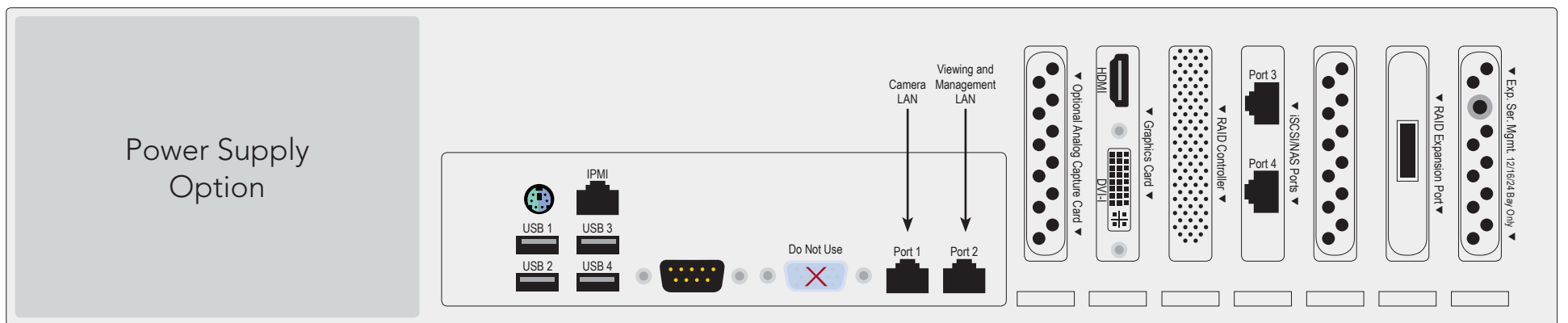
Password: P@ssw0rd

Note: This user has administrative privileges.



RESEAT ALL HOT-SWAP HARD DRIVES PRIOR TO BOOTING THE SYSTEM.

ALLOW UP TO 2 MINUTES FOR SYSTEM TO POST. NOTHING WILL APPEAR ON THE SCREEN DURING THIS TIME. DO NOT POWER OFF OR UNPLUG THE SYSTEM DURING THIS TIME.



MAIN BACK PANEL CONNECTIONS

I/O Port Connection	Port Usage
NIC Port 1	Camera LAN
NIC Port 2	Viewing and Management LANs
USB Port 1	Mouse
USB Port 2	Keyboard
USB Port 3	

I/O Port Connection	Port Usage
USB Port 4	
HDMI or DVI Port	Video Display
iSCSI/NAS Port 3 (Optional)	Network Storage
iSCSI/NAS Port 4 (Optional)	Network Storage
SAS Expansion Port (Optional)	Network Storage Direct Attached Storage (DAS)

NOTE: For BIOS set-up use HDMI or DVI. Only one monitor can be connected for BIOS set-up.

When the PCIe based graphics card is provided, **DO NOT** use the capped VGA connector for monitor connection.

DEFAULT 1GBE FIXED IP ADDRESSES

Port	Default Label	IP Address	Mask	Gateway
NIC 1*	Camera LAN	192.168.1.253	255.255.255.0	192.168.1.1
NIC 2*	Viewing and Management	192.168.1.252	255.255.255.0	192.168.1.1
2 iSCSI/NAS**	iSCSI/NAS 1	10.0.10.254	255.255.255.0	
3 iSCSI/NAS**	iSCSI/NAS 2	10.0.10.253	255.255.255.0	

*Fixed non-routable addresses are recommended for Port 0 and Port 1 if DHCP server is not in network

**This is optional; iSCSI non-routable fixed IP addresses and isolated network is a practical requirement.

DRIVE SLOT LOCATIONS BY CHASSIS MODEL

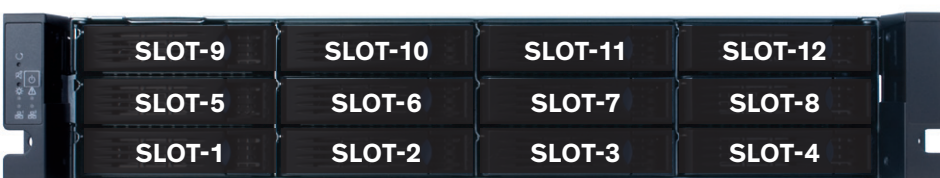
xNVR 2U 4 BAY



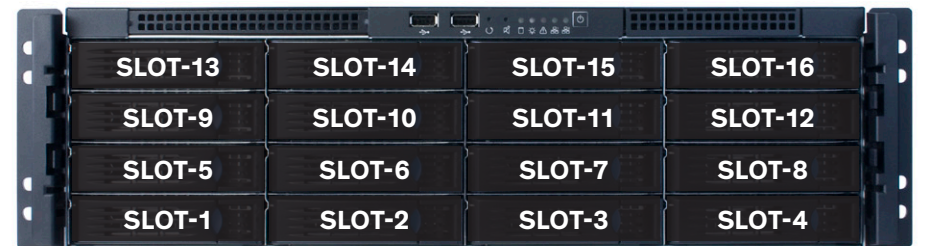
xNVR 2U 8 BAY



xNVR 2U 12 BAY



xNVR 3U 16 BAY



xNVR 4U 24 BAY



BASE CONFIGURATION NOTES

- RAID Set(s) and associated spares configured per purchase order.
- Operating system installed on drive C:
- Video should be stored on Drives D: and higher

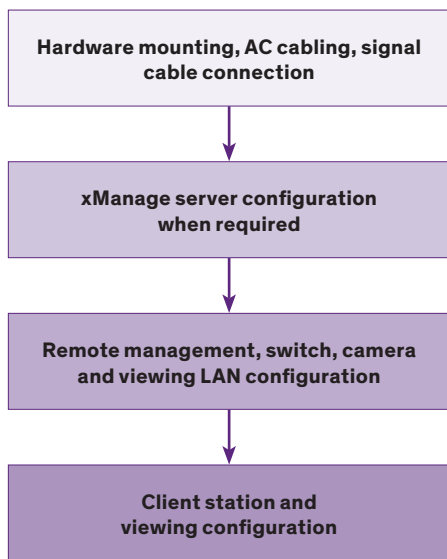
SOFTWARE GUIDANCE IS ON THE BACK PAGE →

XNVR200QS-V2.0.0515



XNVR200QS-V2.0

WARNING: Power on self test takes several minutes until boots process.



SERVER INSTALLATION

1. Before starting the xVault xNVR200 server the following must be done: Mount and cable hardware. This includes any storage used external to the xNVR appliance.
2. Review xNVR Guide to understand factory default settings. The user guide is available at: <http://products.senecadata.com/PDF/xNVR-manual-V2.pdf>
3. Map and record any changes to be made to factory default settings.
 - (i.e. username, password, IP address, iSCSI address, etc)
4. Connect a keyboard, mouse, and monitor to the server.
5. Referencing manual or Microsoft documentation, make desired additions and changes.

Inability to access appliance or settings could require complete OS and data installation. ALWAYS document configuration changes.

VIDEO MANAGEMENT SOFTWARE INSTALLATION

WARNING:

Time between installation screens may take up to five (5) minutes for OS and VMS.
Many VMS's default to Drive C: during setup as the receptacle for video storage.
It is strongly suggested to use drive letters D: and higher to contain video data.

1. After initial startup and configuration, the system is ready to install the Video Management Software (VMS).
 - Select the VMS Installer Icon on the OS desktop
2. Once the VMS Installer is open install the necessary prerequisites, which are listed on the Seneca VMS Installer window
3. Select the VMS followed by the VMS Server or Client application. (This process will take several minutes to load).
 - If the VMS is unlisted, go to the manufacturer's website for installation reference
4. Test to verify the VMS application is working
5. **OPTIONAL:** Select the Uninstall Seneca VMS Installer to reclaim the space on the OS drive (NOTE: This will not remove the VMS installed, ONLY the installer).



IP CAMERA PRE-INSTALLATION PREPARATION

1. Select IP camera address range and camera group settings
2. Have advanced network and switch configuration requirements on hand (i.e. port segregation supporting IP SAN traffic, multi-switch settings, POE settings, etc.)
3. Be aware of special operating system requirements such as the following:
 - Drive letter designation for camera video stream storage (DO NOT USE DRIVE C)—we are partial to X.
 - IP address selection for different NIC ports, management port and connections, RAID

IP CAMERA INSTALLATION

1. Connect camera switch 1GbE ports to Port 0
2. Connect and document camera to switch and switch port number
3. Using the camera manufacturer's or VMS software, configure the IP address for the cameras

XVAULT XNVR SUPPORT

Seneca customer care group stands ready to assist with any hardware and operating system assistance.

Contact Seneca Digital Security and Surveillance Support:

Normal Business Hours

800.227.3432 option 5

Available Monday–Friday 8am–6pm EST

Outside Business Hours

888.227.9994

Download the complete user manual at
<http://products.senecadata.com/PDF/xNVR-manual-V2.pdf>

NOTE: All Video Management Software (VMS) and IP Camera support questions should be directed to the VMS and Camera manufacturers.

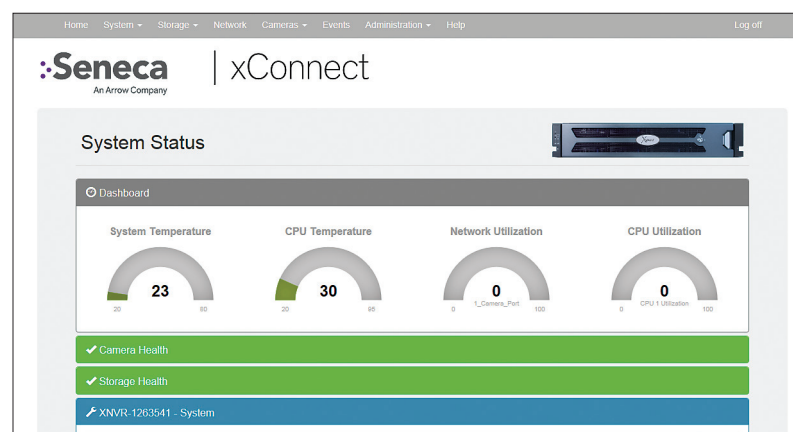
First level of data protection and integrity begins with AC power protection.

Please consult your Seneca Account Manager for properly sized, uninterruptable power supply (UPS).

XCONNECT SOFTWARE OVERVIEW

xConnect is a software package that gives health status on the system (including cameras), pushes out notifications to the xConnect Monitor, and can send email alerts once properly configured.

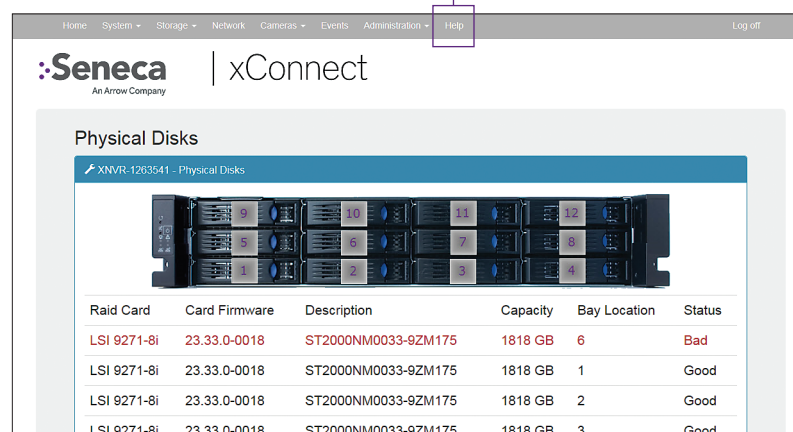
1. Click on this icon to access the xConnect Management Software
2. **Default Log In Information**
Username: admin@xconnect
Password: P@ssw0rd



The xConnect Monitor is a desktop application that can run anywhere on the local network. It shows the health status of the four key areas of the xConnect Management Software. Please go to support.senecadata.com to download the software from the module on the landing page.

Additional Help

A full user guide is available within the xConnect Software under the "Help" tab



NOTE: Please reference manual for more detailed configuration information.

Congratulations you have successfully completed your xVault installation. We want to hear from you!
Complete a brief three (3) question survey and receive a \$5.00 Amazon gift card. Visit <http://info.senecadata.com/xvaultinstallation>