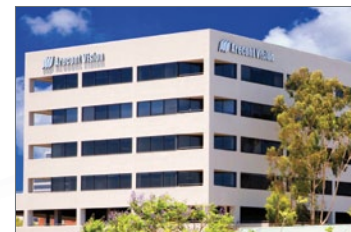


## Accessories

<b>MD2-HK</b> 2 Watt Heater (MegaDome® 2 Only)		<b>MD-FMA</b> Flush Mount Adapter	
<b>MD-JBA</b> Indoor/Outdoor Junction Box Adapter (For MD-CMT Only)		<b>MD-WMT2</b> Wall Mount (1.5NPT Standard)	
<b>MD-EBA</b> Electrical Box Adapter Plate		<b>MD-CMT</b> Pendant Mount	
<b>MV-EBA</b> Electrical Box Adapter		<b>MD-PMA</b> Pole Mount Adapter	
<b>SV-JBA</b> Junction Box Adapter (For MD-WMT2 Only)		<b>MD-CRMA</b> Corner Mount Adapter	

# MegaDome® Megapixel IP Cameras

All-in-One H.264 Dome Camera Solutions



## Global Sales and Support

Arecont Vision is the leading manufacturer of high-performance megapixel IP cameras and associated software. All Arecont Vision cameras are made in the USA.

### North America

#### Los Angeles, USA

Arecont Vision, LLC. Headquarters  
425 E. Colorado St., 7th Floor  
Glendale, CA 91205, USA

Phone: +1.818.937.0700  
Toll Free: 877.CAMERA.8  
Fax: +1.818.937.0464

#### Sales

Phone: +1.818.937.0700 x 3  
Email: avsales@arecontvision.com

#### Support

Phone: +1.818.937.0700 x 1  
Email: support@arecontvision.com

### South America

#### Latin America

Email: latam.sales@arecontvision.com

### EMEA

#### Frankfurt, Germany

Arecont Vision Europe GmbH  
Lyoner Straße 38, 5th Floor  
60528 Frankfurt, Germany

Phone: +49.69.6953.4600  
Email: europe.sales@arecontvision.com

#### Moscow, Russia

CJSC Arecont Vision  
121351, Russian Federation, Moscow, 58/1,  
Molodogvardeiskaya str.

Phone: +7.495.649.0577

Fax: +7.495.221.5227  
Email: info@arecontvision.ru

#### Middle East

Email: mena.sales@arecontvision.com

#### Africa

Email: africa.sales@arecontvision.com

### APAC

#### Shanghai, China

Resident Representative Office of  
Arecont Vision, LLC in Shanghai  
Taolin Road No. 18, Building A  
World Plaza, Room #1603  
Pudong New District, Shanghai, 200135  
P.R.China

Phone: +86.21.6176.2596  
Alt. Phone: +86.21.6176.2597  
Fax: +86.21.6085.2520  
Email: apac.sales@arecontvision.com



Wide Field of View



Telephoto Field of View

## All-in-One Solutions – MegaDome® and MegaDome® 2

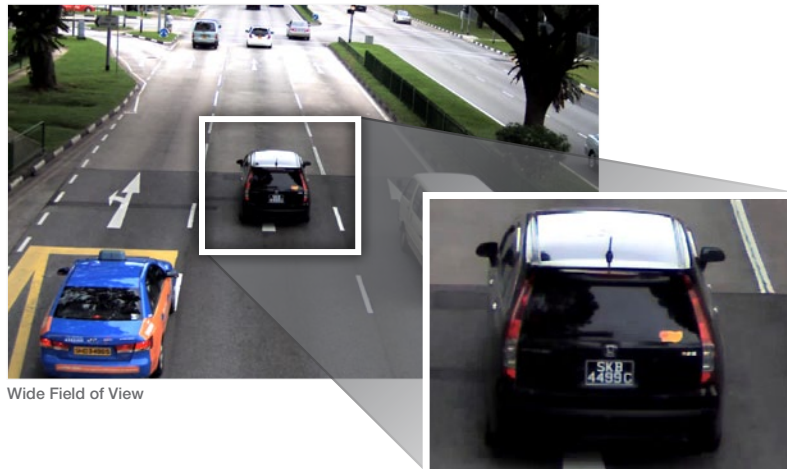
MegaDome® and MegaDome® 2 multi-megapixel cameras provide ample resolution to zoom-in for details in live or recorded video. These indoor/outdoor all-in-one solutions integrate a 1.3-, 1080p, 3-, 5- or 10-megapixel (MP) camera with the fastest frame rates in the industry and an IR corrected motorized vari-focal lens (auto iris/P-iris with WDR) into an IP66 environmental rated / IK-10 impact resistant dome housing. Remote focus and remote zoom make MegaDome® 2 the easiest to install cameras in our product line.

### Highlighted Features:

- Remote Focus and Remote Zoom (MegaDome® 2)
- Dual Encoder: H.264 and MJPEG
- Wide Dynamic Range up to 100dB at Full Resolution in 1080p and 3MP (WDR cameras only)
- Fast Frame Rates. Casino Mode™ in 1080p Models (maintains 30fps or higher)
- Day/Night, Auto-Iris with IR Illuminator Option, P-Iris in WDR Models
- Integrated IR Corrected Vari-Focal Lens
- Easily Adjustable 3-axis Gimbal with 360° Pan, 90° Tilt and 360° Z-axis
- Binning Mode for Increased Low-Light Sensitivity on 3MP, 5MP and 10MP



## See Every Detail with Forensic Zooming



Wide Field of View

Telephoto Field of View

Arecont Vision MegaDome® and MegaDome® 2 megapixel cameras deliver outstanding resolution to capture every detail whether viewing live or recorded/archived video. With the ability to digitally Pan-Tilt-Zoom (PTZ) images, you can view the details you need to see at any time, such as license plates, faces and other objects of interest. The superior resolution of MegaDome® megapixel cameras along with their varying fields of view allows them to do the work of multiple conventional cameras and provide critical forensic information—all without the need and associated expense of system operators having to “catch” activities of interest as they occur.

## MegaDome® 2 with Wide Dynamic Range (WDR)



Megapixel image without WDR



Megapixel image with WDR



Users can achieve clear images in extreme lighting conditions with MegaDome® 2 WDR cameras in resolutions of 1080p and 3MP. Wide Dynamic Range up to 100dB at full resolution balances light and dark areas in the same scene, such as in the lobby of an office building or the loading dock at a distribution facility. Optional IR illuminators provide coverage in total darkness for a 24-hour solution.

## H.264 MegaDome® 2 Series



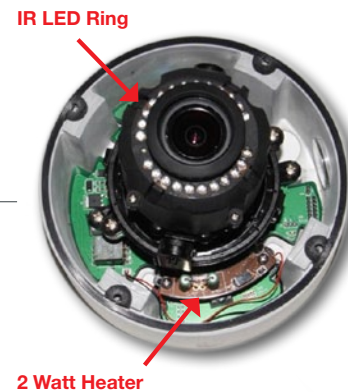
### Features at a Glance:

- Full HD 1080p and 1.3, 3, 5, 10MP
- H.264/MJPEG
- 42fps @ 1.3MP, 32fps @ 1080p, 21fps @ 3MP, 14fps @ 5MP, 7fps @ 10MP
- Day/Night, Remote Focus, Remote Zoom and Auto-Iris
- WDR Configuration Uses P-Iris
- Total PoE Solution including Heater
- Integrated IR Illuminator (IR Version Only)
- Audio and SD Card (Future Option)
- Outdoor, IP66 Vandal Resistant IK10 Rated Dome
- Binning Mode on 3, 5 and 10MP
- Privacy Masking, 1024 Zone Motion Detection, Casino Mode™

Model	Resolution	Minimum Illumination	Max Frame Rate @ Full Resolution	Day/Night	WDR	Remote Zoom Remote Focus	IR	Heater Option	Audio Option	Auto Iris or P-Iris Lens	ONVIF/PSIA
AV1255AM	1.3MP 1280 x 1024	0.1 Lux	42fps	•		•		•		A	•
AV1255AMIR	1.3MP 1280 x 1024	0.1 Lux	42fps	•		•		•		A	•
AV2255AM	1080p 1920 x 1080	0.1 Lux	32fps	•		•		•	•	A	•
AV2255AMIR	1080p 1920 x 1080	0.1 Lux	32fps	•		•		•	•	A	•
AV2256PM	1080p 1920 x 1080	0.1 Lux @ f1.2 D/N: 0 Lux, IR sensitive	32fps	•	•	•		Includes Blower		P	•
AV2256PMIR	1080p 1920 x 1080	0.1 Lux @ f1.2 D/N: 0 Lux, IR sensitive	32fps	•	•	•		Includes Blower		P	•
AV3255AM	3MP 2048 x 1536	0.3 Lux Binned 0.15 Lux	21fps	•		•		•		A	•
AV3255AMIR	3MP 2048 x 1536	0.3 Lux Binned 0.15 Lux	21fps	•		•		•		A	•
AV3256PM	3MP 2048 x 1536	0.3 Lux @ f1.8 D/N: 0.15 Lux, IR sensitive	21fps	•	•	•		Includes Blower	•	P	•
AV3256PMIR	3MP 2048 x 1536	0.3 Lux @ f1.8 D/N: 0.15 Lux, IR sensitive	21fps	•	•	•		Includes Blower	•	P	•
AV5255AM	5MP 2592 x 1944	0.3 Lux Binned 0.15 Lux	14fps	•		•		•	•	A	•
AV5255AMIR	5MP 2592 x 1944	0.3 Lux Binned 0.15 Lux	14fps	•		•		•	•	A	•
AV10255AM	10MP 3648 x 2752	0.42 Lux Binned 0.21 Lux	7fps	•		•		•		A	•
AV10255AMIR	10MP 3648 x 2752	0.42 Lux Binned 0.21 Lux	7fps	•		•		•		A	•

## Total PoE Solution

No external power is needed for both heater and IR LED ring.



## IR LED Key Specs

- 850nm LEDs (x24)
- 20m IR Distance (Max)
- 40° IR Angle
- MTBF: 82,442 Hours

## MegaDome® 2: Remote Zoom, Remote Focus and Auto-Iris

The MegaDome® 2 series of all-in-one H.264 cameras combines megapixel resolution with remote focus, remote zoom, Day/Night and auto-iris capabilities. The cameras can be installed without locally adjusting the field of view or focus. All lens operations can be remotely controlled from the head end to refine the field of view and focus of the scene. Short or full range focus scan functions analyze the local or full scene to determine the best focus for the chosen field of view.

## User-Friendly Web Interface

For easy installation, remote focus and remote zoom can be done through the camera webpage (MegaDome® 2). Just click “short range focus” or “full range focus” to get a clear image through the IK-10 rated dome bubble. The added DC auto-iris functionality provides better depth of field in varying lighting conditions.

### Additional Benefits Include:

- Fine tuning for a better image after installation
- Quicker installation meaning less expensive total cost of ownership
- Ability to choose wide or telephoto field of view depending on application requirements
- Auto-iris is provided to provide the maximum depth of field in any lighting condition to ensure the best possible image quality



## Compliant H.264 Compression

- Compliant implementation of H.264 allows full frame rates and full resolution without sacrificing image quality
- H.264 and MJPEG dual compression support with simultaneous streaming
- Decreases the CPU load both at the client (decompression) side and the server/storage side
- Lower bandwidth and storage relative to MJPEG
- Bit rate control to maintain desired bandwidth and storage size
- Real Time Streaming Protocol (RTSP) allows for compatibility with media players such as Apple QuickTime®, VLC and others

## H.264 MegaDome® Series



### Features at a Glance:

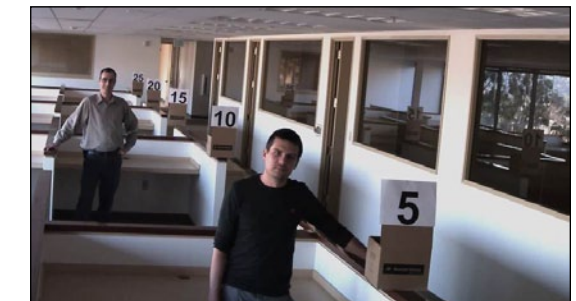
- Full HD 1080p and 1.3, 3, 5 Megapixel
- All-in-One Solution
- H.264/MJPEG
- 32fps @ 1.3MP, 24fps @ 1080p, 15fps @ 3MP, 9fps @ 5MP
- Color and Day/Night Versions
- Multi-Streaming: Up to 8 Concurrent Non-Identical Streams
- Bit-Rate Control
- Superior Low-Light Performance

Model	Resolution	Minimum Illumination	Max Frame Rate @ Full Resolution	H.264/MJPEG	Color Only	Day/Night	Heater Option
AV1355	1.3MP 1280 x 1024	0.1 Lux	32fps	•	•		•
AV1355DN	1.3MP 1280 x 1024	0 Lux, IR	32fps	•		•	•
AV2155	2MP 1600 x 1200	0.1 Lux	24fps	•	•		•
AV2155DN	2MP 1600 x 1200	0 Lux, IR	24fps	•		•	•
AV3155	3MP 2048 x 1536	0.2 Lux	15fps	•	•		•
AV3155DN	3MP 2048 x 1536	0 Lux, IR	15fps	•		•	•
AV5155	5MP 2592 x 1944	0.3 Lux	9fps	•	•		•
AV5155DN	5MP 2592 x 1944	0 Lux, IR	9fps	•		•	•

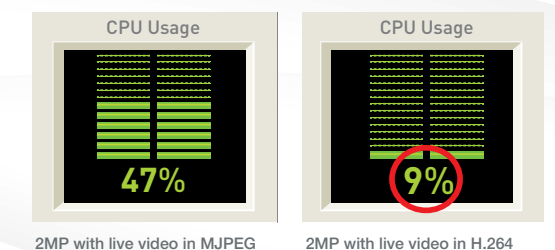
## Enhanced Low-Light Performance

As part of their superior Day/Night operation, MegaDome® 2 cameras include low-light-enhancing technology such as binning and adaptive noise-cancellation.

This functionality along with integrated IR illumination provides a winning combination in complete darkness.



## H.264 Decompression (example)



2MP with live video in MJPEG

2MP with live video in H.264