



ICIP-D2000

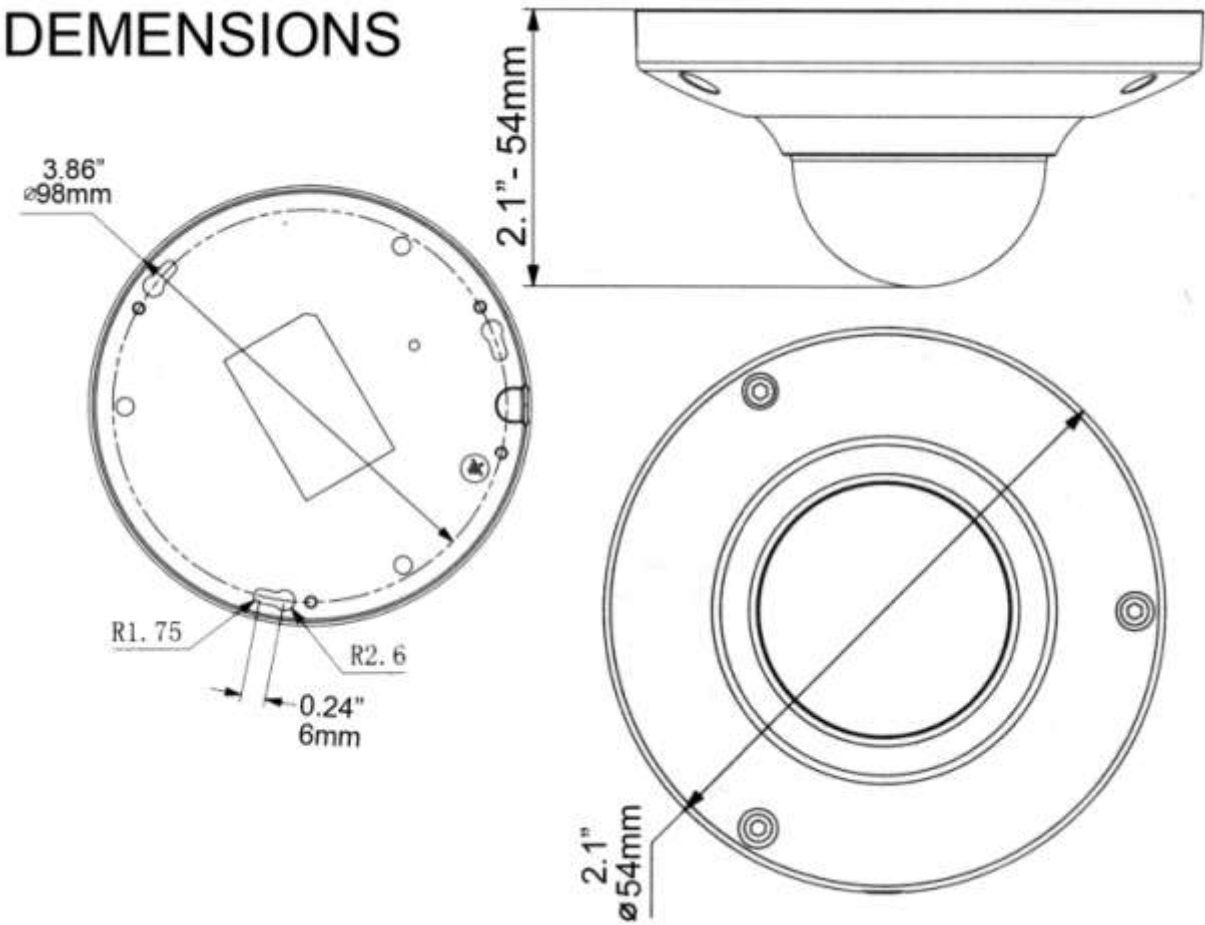
Quickstart Guide

Installation/Accessing

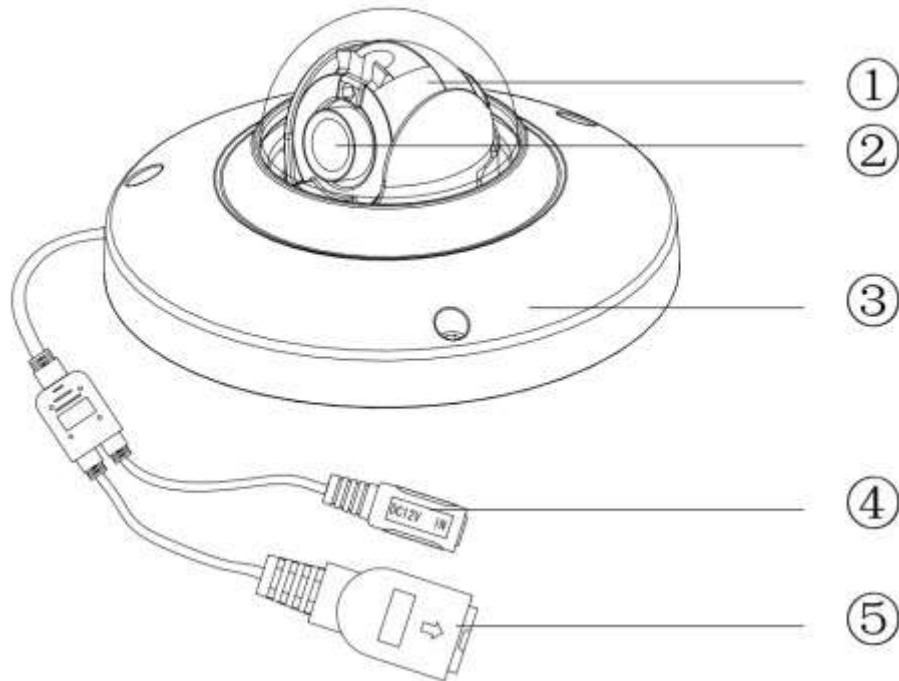
Index

Dimensions	3
Connections (Structure)	4
Installation & Focusing	5-6
Web Operations/Accessing.....	7-9

DEMENSIONS



Connections (Structure)



1.X/Y Adjustments: Allows you to maneuver the lens to obtain best viewing angle.

2.Lens: The actual camera lens.

3.Enclosure: The housing for all internal components.

4.DC 12V: Input DC 12V Power Adaptor.

5. Ethernet Port: Connects to a standard Ethernet Cable.

Installation

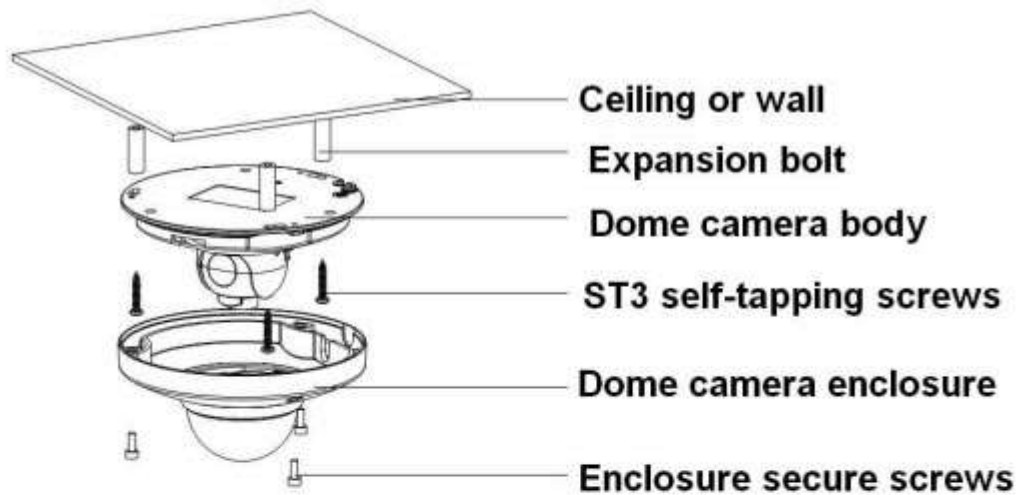
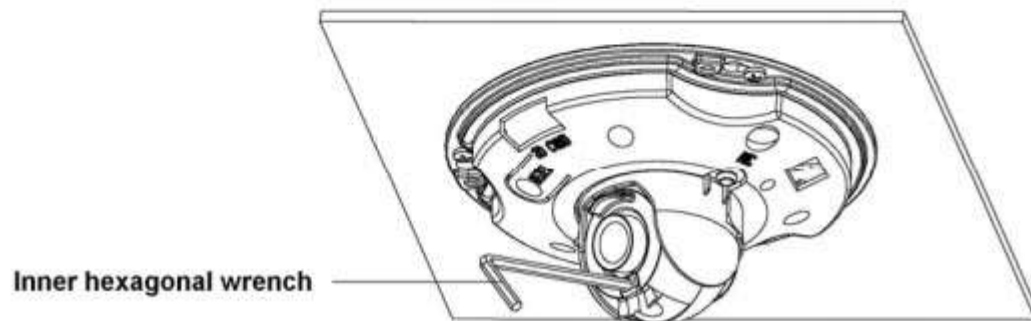


Figure 3-1

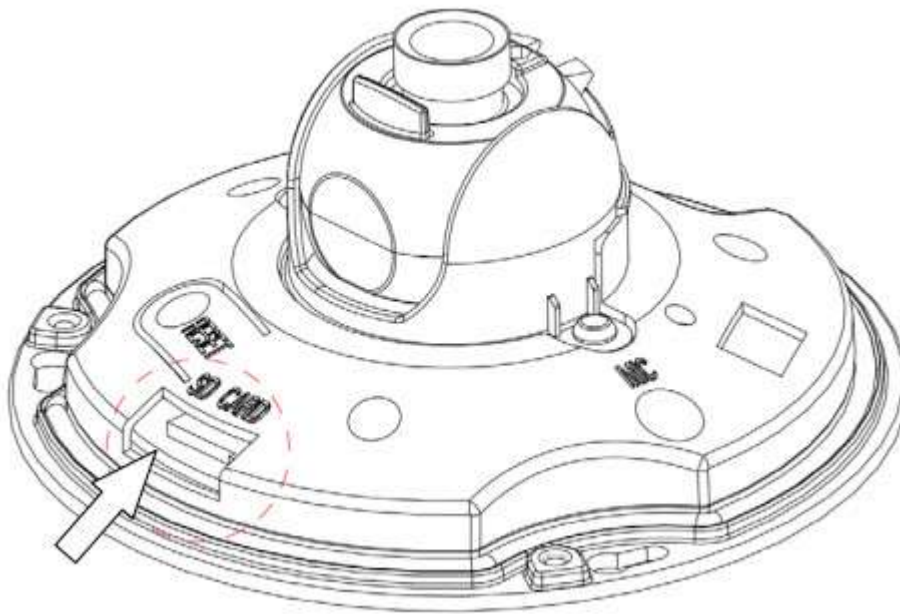


Please follow the steps listed below to install the ICIP-D2000. Please refer the image above for reference.

- Please draw the installation holes in the installation surface and then mark three expansion bolts holes in the surface. Insert three bolts in the hole and secure firmly.
- Please line up the installation holes of the bottom of the pendant mount bracket to the installation holes in the surface. Then insert the three bolts to the holes of the bottom of the bracket. Finally fasten the device on the installation surface.

Focusing: To focus, you will notice a Hex or Philips screw at the top/side of the lens. Unscrew slightly and carefully turn the lens itself left or right, attempting to find a good placement. Tighten the screw back once you have the lens placed correctly.

SD Card Installation



To install a Micro SD Card in to the D2000, please refer to the picture above.

- Begin by opening the top portion of the housing. There are three hex screws at the top
- Locate the SD Card slot inside the unit. It will have 'SD CARD' as a notation
- Insert the Micro SD and be sure it latches inside.
- Power the unit on and you should now see your inserted card present in the storage section of the camera to be used for internal recording. Note: If it shows 'error' for the status of the card, attempt to use the 'format' option in that same section to be sure formatted correctly for use. This will erase though any previous data on the card.

Web Operation

This series IPC product supports Web access and management via PC/Mac. Web includes several modules: monitor channel preview, system configuration, alarm and etc.

Network Connection

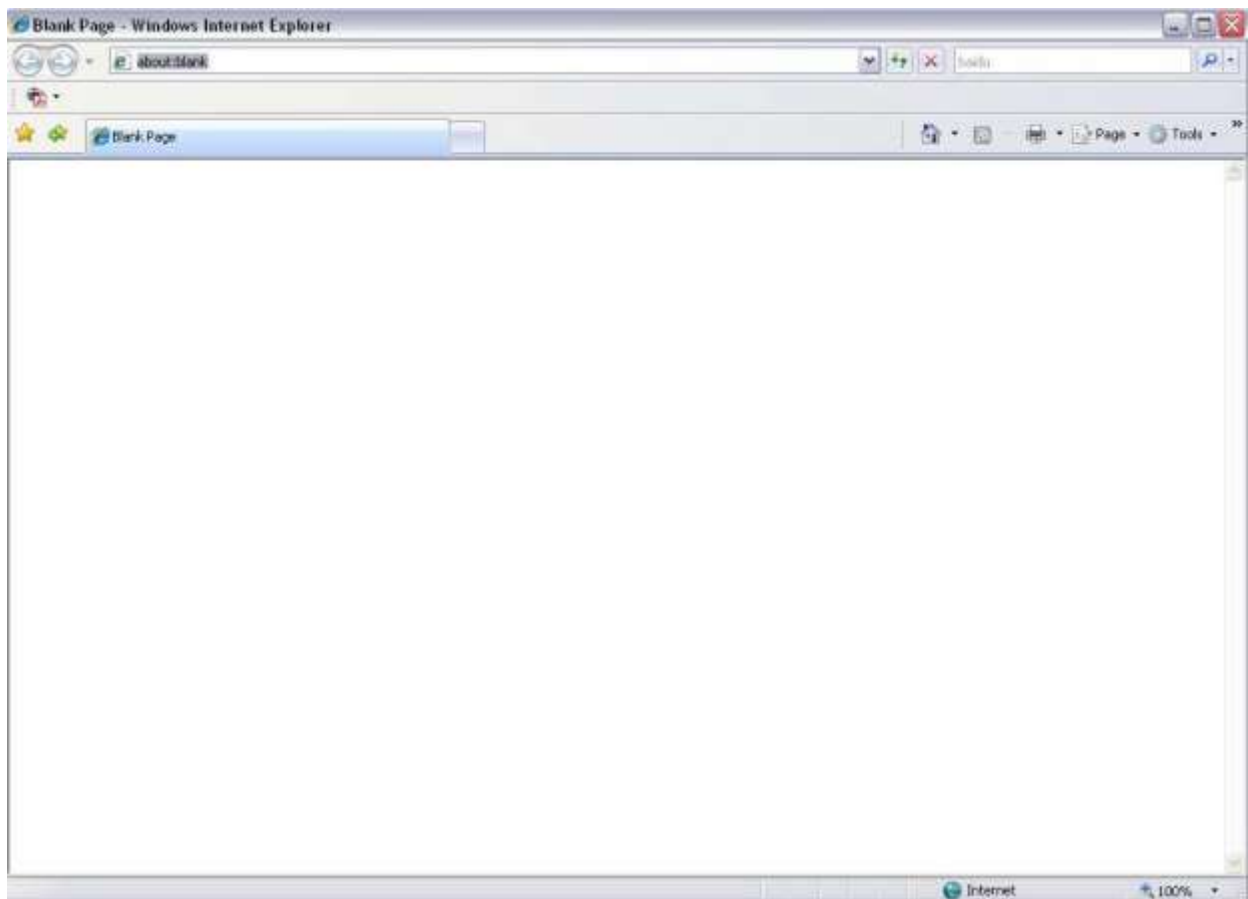
Please follow the steps listed below for network connection.

- Make sure the IPC has connected to the network properly.
- IPC IP address and PC IP address shall be in the same network segment. IPC default IP address is 192.168.1.108. If there is router, please set the corresponding gateway and subnet mask.

Login and Logout

Open IE and input IP camera address in the address bar.

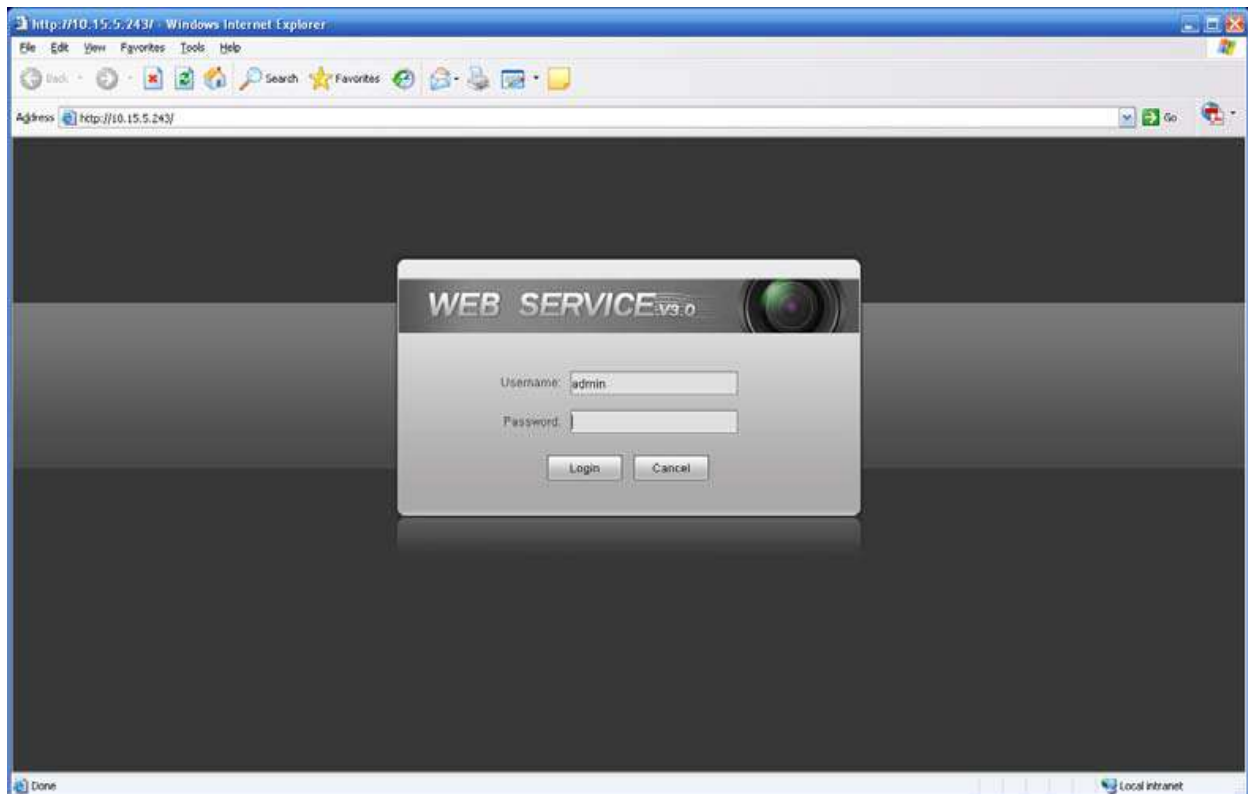
For example, if your camera IP is 192.168.1.108, then please input http:// 192.168.1.108 in IE address bar.



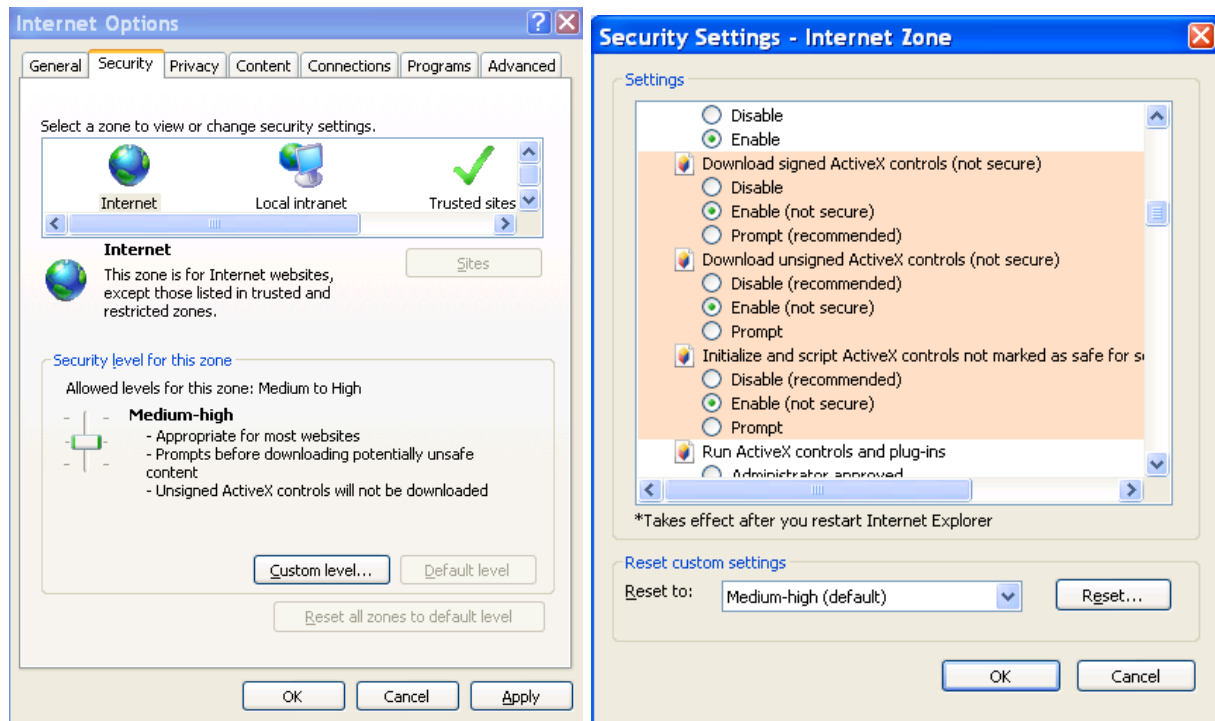
The login interface is shown as below.
Please input your user name and password.

Default factory name is admin and password is admin.

Note: For security reasons, please modify your password after you first login.
Input your IP address here.



If it is your first time to login, the system may pop up with a warning box to ask you whether to install a web plugin. Please click OK button and the system will automatically install the control plugin. If you can't download the control file, you may need to lower temporarily Internet Explorer's security settings as shown below. If using browsers other than Internet Explorer, check to verify security settings are set to allow the downloading of plugins.



After you logged in, you can see the main window.

