



DWCA-C128-64	DWCA-C12C-64
--------------	--------------



DWCA-C128-64

DWCA-C12C-64

Username: admin	Password: admin
------------------------	------------------------

WHAT'S IN THE BOX					
QSG Manual		1 Set	Template Sheet for installing by Bolt & Nut		1 Set
Manual CD		1 Set			

Attention: This document is intended to serve as a quick reference page for initial set-up. It is recommended that the user read the entire instruction manual for complete and proper camera usage.

Step 1 – PREPARING TO MOUNT THE CAMERA

1. The mounting surface must bear five times the weight of your camera.
2. The MEGApix CaaS Box camera has two mounting options. The camera can be mounted from the top or the bottom by connecting the camera to any 1/4-20 mounting bracket.
3. Using an appropriate mounting bracket, mark and drill the necessary holes to mount the bracket to a wall or ceiling.
4. Attach the mounting bracket to the surface using machine screws.

Step 2 – CABLING THE CAMERA TO EXTERNAL DEVICES

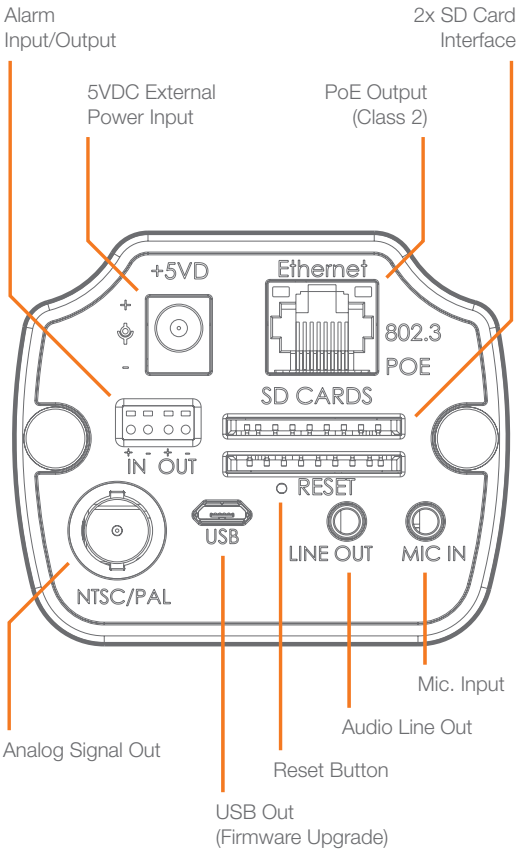
5. Pass the wires through and make all necessary connections.
 - a. If you are using a PoE Switch, connect the camera using an Ethernet cable for both data and power.
 - b. If you are using a non-PoE switch, connect the camera to the switch using an Ethernet cable and use a power adapter to power the camera.

Power Requirements	Power Consumption
DC 5V PoE IEEE 802.3atPoE+ / PoE Class 2	3W, 600mA

Step 3 – INSTALLING THE CAMERA

Note: For the DWCA-C12C-64 model, please add a CS Mount lens (not included). Secure the lens to the front of the camera by rotating it clockwise.

6. Secure the box camera to the mounting bracket's screw to complete the installation. Adjust the camera's view by using the mounting bracket's tilting screws.

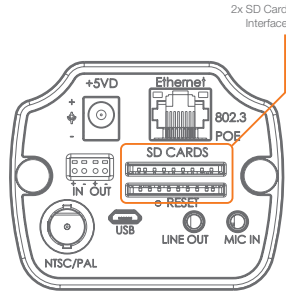


Resetting the camera: To reset the camera, use the tip of a paper clip or a pencil and press the reset button. Pressing the button for five (5) seconds will initiate a camera-wide reset of all the settings, including network settings.

Step 4 – MANAGING THE SD CARD

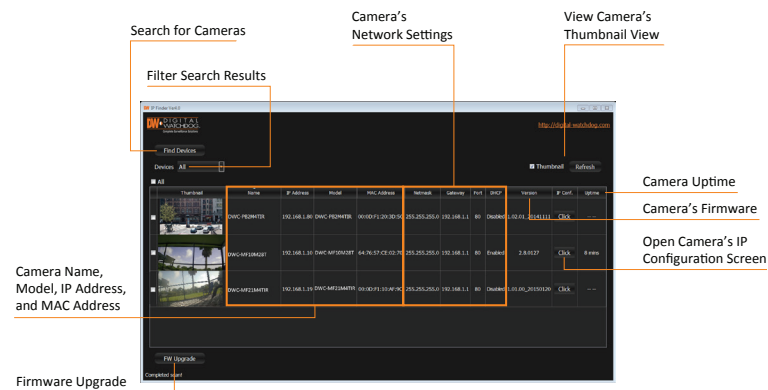
This camera comes with an SD card pre-installed. If you wish to upgrade the memory size or reset the SD card:

1. To install the camera's SD Card, locate the SD card slot in the back of the camera.
2. Insert a Class 10 SD/SDXC card into the SD card slot by pressing the SD card slot. Please check your camera model as your camera may come with a 64GB SD Card pre-installed.
3. To remove the SD Card, press the card inward to release from the card slot.



Step 5 – DW IP FINDER™

Use the DW IP Finder™ included in the camera's accessory CD to scan the network and detect all MEGAPix® cameras, set the camera's network settings, perform firmware upgrade or access the camera's web client.



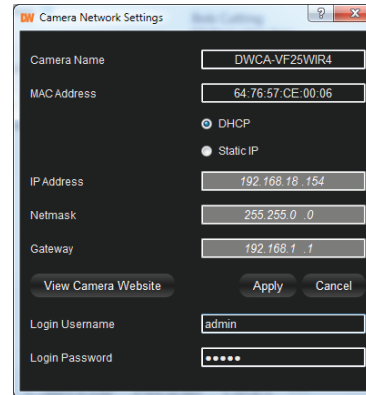
Network Setup

1. Run the CD included with the camera and click on the DW IP Finder™ file.
2. The software will scan your network for all supported cameras and display the results in the table.
3. Select a camera from the list by double-clicking on the camera's image or clicking on the 'Click' button under the IP Conf. column. The camera's network information will appear. If necessary, you can adjust the camera's network type.

- i** Select DHCP if the internet service is dynamic IP. This will allow the camera to receive its IP address from the DHCP server.
- i** Select STATIC to manually enter the camera's IP address, subnet mask, Gateway and DNS information.
- i** Contact your network administrator for more information.

4. The camera's default network information is:

- i** Default TCP/IP information
- IP: 169.254.X.X
 - Subnet Mask: 255.255.255.0
 - Gateway: 192.168.1.1
 - DNS: 168.126.63.1



5. To view the camera's web viewer, click on 'View Camera Website'.

- i** 'Port Forwarding' has to be set in your network's router for external access to the camera.

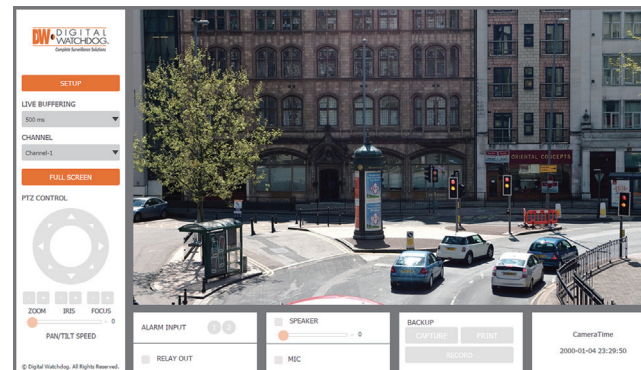
6. To save the changes made to the camera's settings, input the ID and PW of the camera for authentication and click 'Save'.
7. If the camera needs to be rebooted after the settings were changed, press the 'Reboot' button. The camera will cycle power and will appear back in the search results once the reboot is complete.

- i** Default ID / PW : admin / admin

8. To update the camera's firmware from the DW IP Finder™, click on the firmware tab, upload the firmware file and select the cameras to update. You can update multiple cameras at the same time.

Step 6 – WEB VIEWER

Once the camera's network settings have been setup properly, you can access the camera's web viewer using the DW IP Finder™. To open the camera's web viewer:



1. Find the camera using the DW IP Finder™.
2. Double-click on the camera's view in the results table.
3. Press the 'View Camera Website'. The camera's web viewer will open up in your default web browser.
4. Enter the camera's username and password (default are admin / admin).
5. If you are accessing the camera for the first time, install the VLC files in order to view video from the camera.

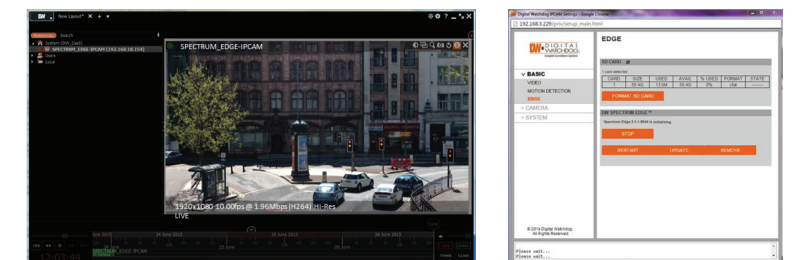
Step 7 – DW SPECTRUM EDGE™ SETUP

This camera comes with the DW Spectrum Edge™ pre-installed. Follow the instructions below if a new SD card is installed on the camera.

1. To add the Edge capability to the camera, install the DW Spectrum CaaS™ software. This software will allow you to record locally to the camera, use the failover redundancy feature and control your camera as any other server using the DW Spectrum™ IP VMS software.
2. To download the DW Spectrum CaaS™ software and for more information, please go to Digital Watchdog's website at www.digital-watchdog.com.
3. Once the DW Spectrum CaaS™ software is installed on the camera, you can stop or restart the now installed DW Spectrum CaaS™ server, update the software or remove it from the camera.

Note: Before Settings up the DW Spectrum Edge™, please make sure the camera's time zone is set properly. Go to the camera's web viewer and select: Setup > System > Date & Time. Select the proper time zone from the drop-down menu and press save to save all changes.

4. To access the camera via the DW Spectrum™ client:
 - a. Install the client software included in the accessory CD.
 - b. Run the DW Spectrum™ software.
 - c. Enter the camera's IP address in the login screen.



Note: Please see the full product manual for web viewer setup, functions and camera settings options.