



**American Dynamics**

*From Tyco Security Products*

# Illustra 825 Fisheye Camera



**Non Vandal-Resistant**



**Vandal-Resistant**

## Features That Make A Difference:

- 5MP imager for super high quality images
- 360°/180° panoramic views of wide areas
- Single or multiple fixed views for forensic investigations
- Onboard dewarping for distortion-free images
- ePTZ capabilities for ultra smooth transition between pan, tilt and zoom
- Efficient bandwidth and video storage to reduce costs
- Onboard SD card recording and storage
- Sleek, discreet design
- Quick and easy installation
- Vandal-resistant model available
- ONVIF 2.4 profile S compliant

The Illustra 825 Fisheye Camera with a 5MP sensor provides a 180° panoramic view when mounted on the wall, or a 360° bird's eye view when mounted on a ceiling. The lens captures an ultra-wide field of view looking in all directions in real-time. The camera's onboard dewarping technology provides distortion corrected video streaming of 180°, 360° panoramic 16:9 or active 4:3 views.

The Illustra 825 Fisheye is ideal for applications such as retail stores, expansive indoor parking areas, casinos, building lobbies, elevator banks, corridor intersections and university lecture halls where situational surveillance covering a wide area can be achieved using a single camera. The Illustra 825 Fisheye Camera is always looking in all directions to capture all activity. The camera produces single or multiple fixed views should forensic investigations be required.

The ePTZ movements of the Illustra 825 Fisheye Camera are ultra smooth creating even transition between pan, tilt and zoom movements. Multiple streams of H.264 and MJPEG video compression provide excellent image clarity while efficiently managing bandwidth to reduce storage costs. In addition, the camera's built-in micro SDHC card slot enables several days of recording to be stored locally on a memory card.

The Illustra 825 Fisheye Camera's sleek, discreet design allows it to blend into any environment for inconspicuous surveillance. The vandal-resistant model protects the camera against external impacts that might occur if an intruder was attempting to take the camera out of operation. It's extremely easy to install and simple to set up. A built-in web server provides easy configuration. In addition, when used with the Illustra Connect software tool, discovery, snapshot, configuration, IP address assignments, diagnostics and firmware upgrades take no time at all.

## Specifications

### Camera

Video Compression	H.264/MJPEG
Max Frame Rate	14ips (all resolutions)
ONVIF Compliant	ONVIF 2.4 profile S
Resolutions	
Fisheye	1936x1936
Active Image 1-4	960x540
	800x450
	640x360
	480x270
	320x180
Wall/Ceiling Panorama	1920x1080
	1600x900
	1280x720
	1024x576
	960x540
	800x450
	640x360
	480x270
	320x180
Imager	Type 1/2.5" 5MP CMOS sensor
Minimum Illumination	1.2 lux
Shutter	AES (Automatic Electronic Shutter)
Lens Focal Length	1.37mm
Aperture	2.0
Field of View	183°
ePTZ	Digital pan/tilt/zoom, presets, sequences, patterns, scans
White Balance	Auto Normal, Auto Wide, and Manual
Alarms	Motion detection
Wide Dynamic Range	82dB
Privacy Zones	Yes, 4
Menu Languages	English (default), Arabic, Czech, Danish, German, Spanish, French, Hungarian, Italian, Korean, Japanese, Dutch, Polish, Portuguese, Swedish, Turkish, Chinese Traditional, Chinese Simplified

### Network

Ethernet	10/100Base-T
Supported Protocols	TCP/IP, IPv4, IPv6, TCP, UDP, HTTP, FTP, DHCP, WS-Discovery, DNS, DDNS, RTP, TLS, Unicast, Multicast, NTP, SMTP, WS-Security

### Configuration Management

#### Onboard Storage

Card Type	Micro SDHC up to 32GB
-----------	-----------------------

#### Electrical

Power	PoE 802.3af Class 3
Power Consumption	<12.95W

#### Physical

Body Diameter	149 mm (5.85 in)
Height	
Vandal-Resistant	74 mm (2.91 in)
Non Vandal-Resistant	60 mm (2.36 in)
Weight	
Vandal-Resistant	0.750 kg
Non Vandal-Resistant	0.730 kg
Color	White (RAL 9003)

#### Environmental

Operating Temperature	-10°C to 45°C (14°F to 113°F)
Humidity	95% non-condensing

#### Regulatory

Emissions	FCC CFR 47 Part 15 Class A, AS/NZS CISPR22 Class A, ICES-003/NMB-003 Class A, EN 55022
Immunity	EN50130-4, EN 61000-6-1, IEC 62599-2, EN55024
Safety	UL 60950-1, CSA-C22.2 No. 60950, EN 60950-1, IEC 60950-1
Environmental	RoHS, EU Directive 2011/65/EU WEEE, EU Directive 2002/96/EC
Impact Rating	IK10

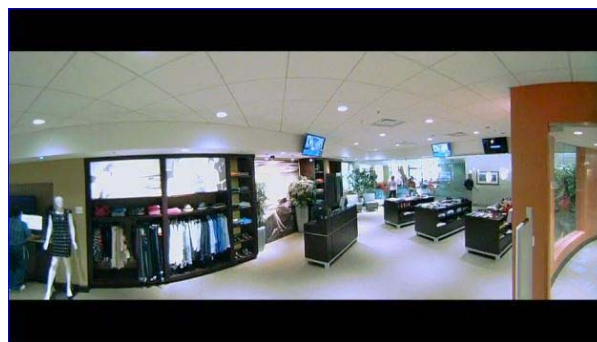
## Ordering Information

Model Numbers	Description
<b>Cameras*</b>	
ADCi825-F311	Illustra 825 Fisheye, 5MP, vandal-resistant
ADCi825-F312	Illustra 825 Fisheye, 5MP, non vandal-resistant
<b>Mounts</b>	
ADCiM6WALLWK	Illustra 600 Indoor/Outdoor Wall Mount
ADCi6DPCAPOW	Illustra 600 Outdoor Pendant Cap

\* Includes double gang box/mount adapter plate



Illustra 825 Fisheye video stream views in victor/VideoEdge 4.4



## Related Products



victor client



VideoEdge NVRs and Hybrid



exacqVision  
NVR

## Approvals



[www.americandynamics.net](http://www.americandynamics.net)