

>>> COVERT IP 2MP CAMERA

MINI-STRIP COVERT IP CAMERA

IPCM2M43PB

- > Covert IP Camera in Mini-Strip Housing
- > Brilliant Video Quality with 2 Mega-Pixel Full HD, 1920 x 1080 Resolution
- > Highly efficient H.264 Video Compression which Drastically Reduces Bandwidth and Storage Requirement
- > Wide Dynamic Range for High Contrast Lighting Conditions
- > Triple Streaming Simultaneously, H.264 and MJPEG Compression, up to 30-ips at 1080p Resolution
- > Unique Design Permits Horizontal (above door) or Vertical (beside door) installation with Swivel Bracket for Horizontal and 5° Tilt Lever for Vertical Camera Adjustments
- > 4.3mm Mega-Pixel Pinhole Lens
- > Progressive Scanning for the Sharpest Video Motion Images
- > Supports Micro-SD Memory Card Slot for Local Recording Storage
- > View and Record up to 64 Cameras and View and Manage an Unlimited Number of ATV NVR Units with included ATVision IP Remote Management Software
- > ONVIF Compliant for Network Video Interoperability
- > Up to 10 Simultaneous Connections through Remote Monitoring
- > 12VDC/PoE Power Options
- > Auto Power Switch, Hot Failover Capability



MINI-STRIP COVERT IP CAMERA

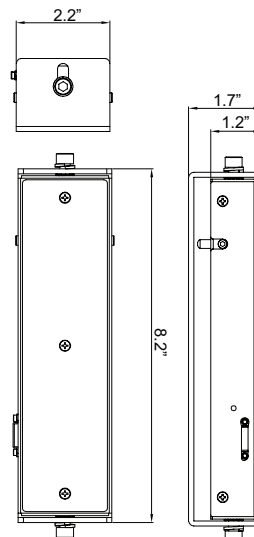
IPCM2M43PB

IP PRODUCT SERIES

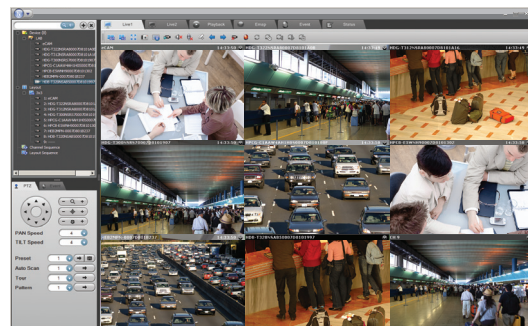
SPECIFICATIONS

MODEL		IPCM2M43PB
CAMERA	Lens	Megapixel Fixed Pin Hole 4.3mm F2.0
	Angle of View	±20°(V) ~ ±35°(H)
	Image Sensor	1/2.8" Sony Exmor CMOS
	Active Array	1920 (H) x 1080 (V)
	Shutter Speed	1/10,000 ~ 1/60
	Min. Illumination	Color: 2.5Lux (F1.2, 50IRE)
	Scanning Mode	Progressive Scan
	Wide Dynamic Range	Digital
	Digital Noise Reduction	Yes - 2D
	Auto Exposure Mode	Automatic/Hold Current
	Auto White Balance Mode	Automatic/Incandescent/Fluorescent/Outdoor
	Back Light Compensation	Enable/Disable Selectable
	Image Rotation	Flip/Mirror
	Flicker Free Mode	60Hz/50Hz Selectable
	Shutter Speed	1/15, 1/8, 1/4
NETWORK	Video Compression	H.264(High, Main, Baseline Profile), MPEG4(SP), MJPEG
	Video Resolution	1920x1080(Full-HD), 1280x1024(SXGA), 1280x720(HD), 704x576/480(D1), 640x480(VGA), 352x288/240(CIF), 320x240(QVGA)
	Video Frame Rate	30fps in all Resolutions
	Video Streaming	Triple (Simultaneously H.264 x2 and MJPEG x1, MPEG-4 x2 and MJPEG x1, H.264 x1 and MPEG-4 x1 and MJPEG x1) Controllable Frame Rate/Bandwidth, VBR/CBR
	Protocols	TCP/IP, UDP, IPv4/v6, HTTP, HTTPS, QoS, FTP, UPnP, RTP, RTSP, RTCP, DHCP, ARP, Zeroconf, Bonjour
	FTP Uploading	MJPEG Still Image
	Privacy Mask	Maximum Number of 8 Masks
	Motion Detection	Maximum 8 Programmable Zones
	Video Buffering	Pre and Post Alarm
	Manual Trigger	Still Image Capture
	Security	Multi User Authority, IP Filtering, HTTPS, SSL
	Network Time Sync	Yes
	Software Reset	Yes
	Auto Recovery	Yes
	Upgrade	Web Browser or SmartManager
	SD Recording Mode	Onboot/Trigger/Motion/Network Loss
GENERAL	Max. User Connection	10 Users
	Ethernet	RJ-45(10/100Base-T)
	Micro-SD Card	Micro-SDHC, Class 6 or above Rec'd; (Max. 32GB)
	Operating Humidity	0 ~ 90% (non-condensing)
	Operating Temperature	14° F - 122° F (-10°C - +50°C)
	Power Source	PoE(IEEE802.3af compliant, Class0), DC12V
	Power Consumption	DC12V - 330MA, 4W POE48V - 83MA, 4W
	Dimensions(D x H)	2.2 x 8.2 x 1.7in (55 x 204 x 51mm)
	Weight	1.1lbs (0.5kg)
	Conformity Certifications	FCC

DIMENSIONS



Line drawing not to scale.



ATVision IP Remote Management Software

Minimum System Requirements for ATVision IP Software

- Operating system: Microsoft Windows 7 (or 8) Professional/Enterprise/Ultimate
- CPU: Intel Core i7; RAM: 4GB; Ethernet connection: 1Gbps
- Graphics card: Gaming rated, with 1GB at 1080p for single monitor; 2GB at 1080p for multiple monitors
- HDD's: 7200RPM and 64MB cache; 1 separate HDD for operating system and software; and 1 (2TB) HDD for recording (refer to IP storage calculator)