

This guide will show you how to set up your IP camera for connection over the Internet using a PC, Smartphone, or Tablet.



**NOTE: If you are using the IP camera with an NVR, you should use the instructions included with the NVR to set up a remote connection.**

### Before You Start:

Make sure you have:

- A router and high-speed Internet access (not included).
- Connected the IP camera to a router or switch on your network using an Ethernet cable. See the Quick Connection Guide for details.
- A PC connected to the same network as your IP camera.
- **Mac users, please visit [www.flirsecurity.com](http://www.flirsecurity.com) for instructions.**

## 1 Record Your IP and MAC Address

- MAC Address:** The IP camera's MAC address is printed on the product label located on the camera housing.
- IP Address:** To find the camera's IP address, see Step 2.

### Record your information below:

MAC ADDRESS: \_\_\_\_\_

IP ADDRESS: \_\_\_\_\_

## 3 Port Forwarding

**Manually forward ports 80 and 35000 to the IP camera's IP address.**

All routers are different. To port forward your router, please refer to your router's user manual.

An example of a port forwarding screen is shown for illustration purposes:

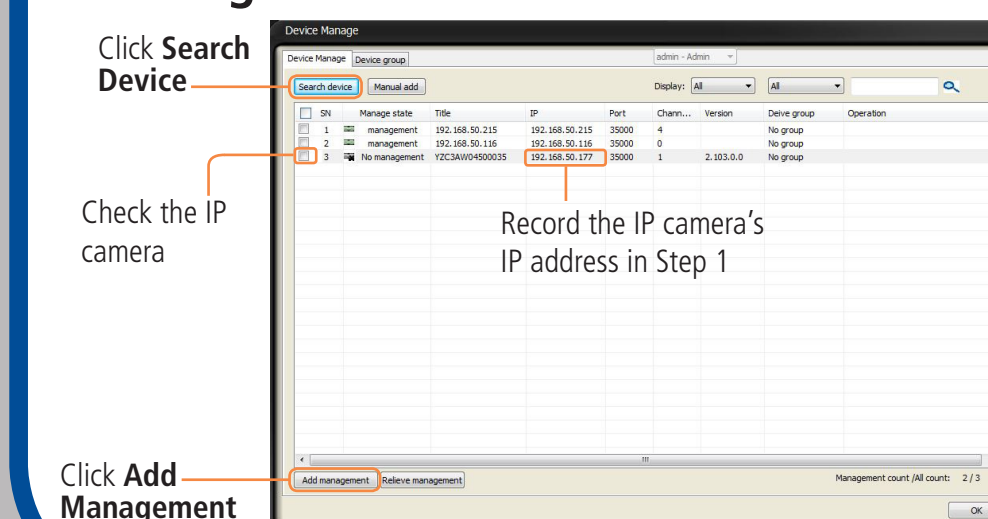
EXAMPLE					
Port Range					
Application	Start	End	Protocol	IP Address	Enable
HTTP	80	to 80	Both	192.168.1. 12	<input checked="" type="checkbox"/>
Client	35000	to 35000	Both	192.168.1. 12	<input checked="" type="checkbox"/>

**NOTE:** An automatic port forwarding wizard is available from [www.flirsecurity.com](http://www.flirsecurity.com).

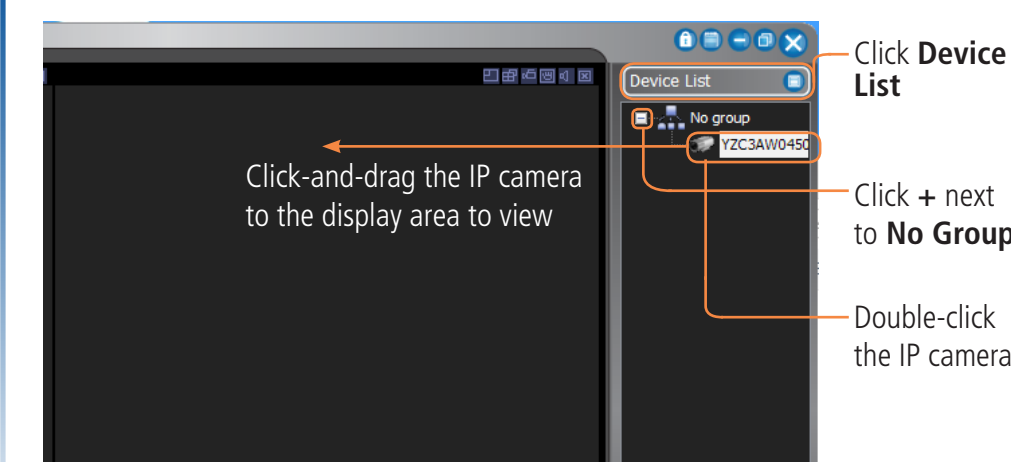
**NOTE:** If you are configuring multiple IP cameras, you must change the ports used by each camera. Two cameras cannot use the same port number. For information on changing camera ports, see the instruction manual for your camera.

## 2 Local Connection (for PC)

- Install **CMS software for PC** from the CD or from [www.flirsecurity.com](http://www.flirsecurity.com) on a computer in the same LAN as the IP camera.
- Click **Config Manager>Device Manage**.
- Click **Search Device**. If a Windows Firewall alert appears, click **Allow**.
- The IP camera appears in the list with the IP address under **IP**. Record the IP address in the space in Step 1; it is required to set up port forwarding.
- Check the IP camera and click **Add Management**.



- Enter the User Name (default: **admin**) and Password (default: **admin**) for the IP camera and click **OK**.
- Click **OK**.
- Click **Device List**. Click + next to **No Group**.
- Double-click the IP camera. Click-and-drag the IP camera to the display area to view.

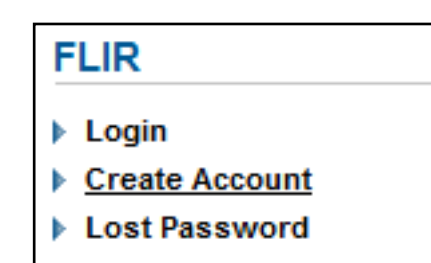


## 4 Register for FLIR DDNS

- Open your web browser and go to:

<http://ddns.myddns-flir.com>

- Click **Create Account**.



- Complete the Account Information fields with your personal information.

- Complete the System Information fields:

System Information	
Product License: DNR200	<Product Code> - <MAC Address>
URL Request: myddns-flir.com	What is this?
Create New Account	

**Product License:**  
Select your product model from the **Product License** drop down menu (i.e. DNB13TF2).

**URL Request:**  
Choose a URL for your DDNS connection (i.e. your name, your company or business name, or anything of your choice).

**<Product Code>-<MAC Address>:**  
Enter the MAC address of the IP camera. The MAC address is printed on a label on the camera housing.

- Once the information has been entered, click **Create New Account**. Your Account information will be sent to you at the email Address you used in Step c.

- Record your information here:

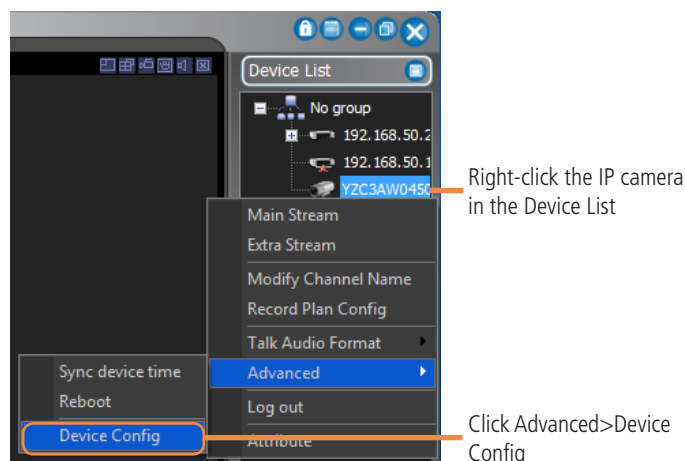
DDNS User Name: \_\_\_\_\_  
DDNS Domain Name: \_\_\_\_\_  
DDNS Password: \_\_\_\_\_



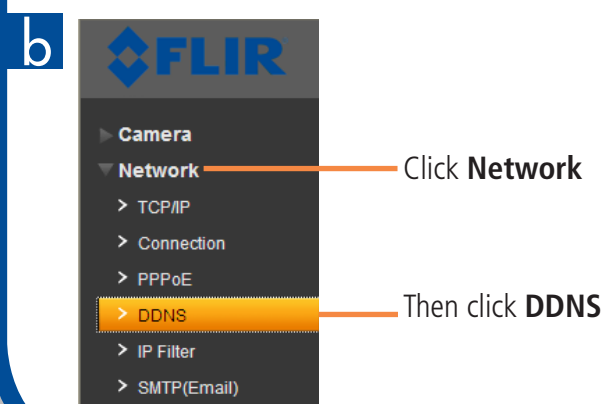
### 5 Enable DDNS on your IP Camera

Once you have registered for free DDNS service, use the information in the confirmation email (recorded in Step 4f) to configure DDNS settings on your system.

- a** In the CMS software, right click the IP camera in the Device List, then click **Advanced>Device Config**.



The IP camera opens in your default web browser.



- c** Configure the following:

- 1 Server Type:** Check the checkbox and select **FlirDDNS**.
- 2 Domain Name:** Enter the **Domain Name** from the confirmation email you received after registering for DDNS.
- 3 Username:** Enter the **User Name** from the confirmation email.
- 4 Password:** Enter the **Password** from the confirmation email.

- d** Click **Save**.

**NOTE:** It may take between 10~15 minutes for the DDNS server to update with your new DDNS address.

### 6 Connect Over the Internet

- a** Install **CMS software for PC** from the CD or from [www.flirsecurity.com](http://www.flirsecurity.com) on a remote computer.

- b** Click **Config Manager>Device Manage**.

- c** Click **Manual Add**.

- d** Configure the following:

- 1 Title:** Enter a name of your choice.
- 2 Type:** Select **IP Camera**.
- 3 Add type:** Select **Single Device**.
- 4 IP:** Enter the DDNS Domain Name (recorded in 4f) followed by **.myddns-flir.com**.

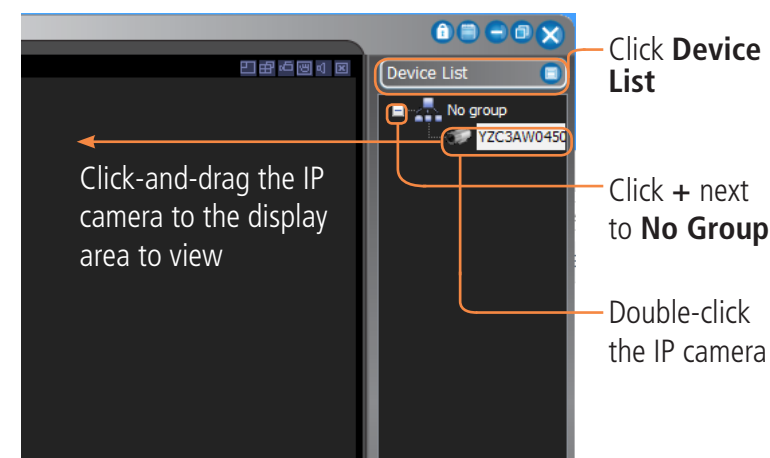
- 5 Port:** Enter Client Port (default: **35000**).
- 6 User:** Enter **User Name** (default: **admin**).
- 7 Password:** Enter **Password** (default: **admin**).

- e** Click **Add**, then click **OK**.

- f** Click **Device List**.

- g** Click **+** next to **No Group**.

- h** Double-click the IP camera. Click-and-drag the IP camera to the display area to view.



## Quick Reference

### Default passwords:

	User Name	Password
Local System Access, Remote Access, and Mobile Connection	• admin	• admin
CMS Software Login	• admin	• admin

### Default system ports:

- **HTTP Port:** 80
- **Client Port:** 35000
- **UDP:** 35001 (special applications only)
- **RTSP:** 554 (special applications only)

HTTP and Client ports must be port forwarded to enable access to the system over the Internet. See Step 3 for details.

## Troubleshooting

Error	Possible Causes	Solutions
Cannot connect to the IP camera over the Internet	<ul style="list-style-type: none"> <li>• Ports not forwarded</li> <li>• DDNS Setup not completed</li> <li>• Ports are blocked by Internet Service Provider (ISP)</li> <li>• Multiple routers installed in local network</li> </ul>	<ul style="list-style-type: none"> <li>• Port forward the ports shown above. See Step 3 for details.</li> <li>• Complete Steps 4 &amp; 5 to register your IP camera for DDNS.</li> <li>• Some ISP's block port 80. Reassign the HTTP port to anything above 1026. Re-complete Step 3 with the new port number. If this does not work, contact your ISP for assistance.</li> <li>• If you have multiple routers, additional setup may be required. See the Port Forward Wizard Manual on <a href="http://www.flirsecurity.com">www.flirsecurity.com</a>.</li> </ul>
Could connect to system previously, but no longer can	<ul style="list-style-type: none"> <li>• IP camera internal IP address has changed</li> </ul>	<ul style="list-style-type: none"> <li>• This can occur if your router resets due to power failure. Set up a fixed IP address for your IP camera. See the Instruction Manual on the CD for details.</li> </ul>
Cannot connect to the IP camera using a smart-phone or tablet	<ul style="list-style-type: none"> <li>• IP address used from outside local network</li> <li>• Router is blocking DDNS connection from internal network</li> </ul>	<ul style="list-style-type: none"> <li>• Use the DDNS address to connect to the IP camera using a mobile application. See Step 7.</li> <li>• Turn off WiFi connection and attempt to connect using 3G or mobile network</li> </ul>

### 7 Mobile Connection iPhone

- Install **FLIR SyncroIP NVR** for free from the App Store.
- Tap the **FLIR SyncroIP NVR** icon.
- Tap **⚙**.
- Tap **Device Manager**.
- Tap **Add**.
- Configure the following, then tap **Save**:

- 1 Name:** Enter a name for your IP camera of your choice.
- 2 DDNS:** Enter your DDNS address (e.g. tomsmith.myddns-flir.com).
- 3 Port:** Enter the Client Port (default: **35000**).
- 4 Username:** Enter the IP camera's User Name (default: **admin**).
- 5 Password:** Enter the IP camera's Password (default: **admin**).
- 6 Channel:** Enter **1**.

- Tap **⚙**, then tap **Live Preview**.
- Tap **+** on one of the display areas and select the camera to open in selected display area.

**NOTE:** You must complete ALL previous steps before connecting using a mobile device. For other mobile platforms, visit [www.flirsecurity.com](http://www.flirsecurity.com) for details.

### iPad

- Install **FLIR SyncroIP NVR HD** for free from the App Store.
- Tap the **FLIR SyncroIP NVR HD** icon.
- Tap **⚙**, then **⚙**.
- Tap **Device Manager**, and then tap **Add**.
- Configure the following, then tap **Save**:

- 1 Name:** Enter a name for your IP camera of your choice.
- 2 DDNS:** Enter your DDNS address (e.g. tomsmith.myddns-flir.com).
- 3 Port:** Enter the Client Port (default: **35000**).
- 4 User Name:** Enter the IP camera's User Name (default: **admin**).
- 5 Password:** Enter the IP camera's Password (default: **admin**).
- 6 Channel amount:** Enter **1**.

- Tap **⚙**.
- In landscape mode:**
  - Tap a display area and then select the camera you would like to view on the left.
- In portrait mode:**
  - Tap **+** on one of the display areas and select the camera you would like to open.

### Android

- Install **FLIR SyncroIP NVR** for free from the Google Play Store.
- Tap the **FLIR SyncroIP NVR** icon.
- Tap **⚙**.
- Tap **Device Manager**.
- Tap **Add**.
- Configure the following, then tap **Save**:

- 1 Name:** Enter a name for your IP camera of your choice.
- 2 DDNS:** Enter your DDNS address (e.g. tomsmith.myddns-flir.com).
- 3 Port:** Enter the Client Port (default: **35000**).
- 4 Username:** Enter the IP camera's User Name (default: **admin**).
- 5 Password:** Enter the IP camera's Password (default: **admin**).
- 6 Channel:** Enter **1**.

- Tap **⚙**, then tap **Live Preview**.
- Tap **+** on one of the display areas and select the camera to open in selected display area.

### Android Tablet

- Install **FLIR SyncroIP NVR HD** for free from the Google Play Store.
- Tap the **FLIR SyncroIP NVR HD** icon.
- Tap **⚙**, then **⚙**.
- Tap **Device Manager**, and then tap **Add**.
- Configure the following, then tap **Save**:

- 1 Name:** Enter a name for your IP camera of your choice.
- 2 DDNS:** Enter your DDNS address (e.g. tomsmith.myddns-flir.com).
- 3 Port:** Enter the Client Port (default: **35000**).
- 4 User Name:** Enter the IP camera's User Name (default: **admin**).
- 5 Password:** Enter the IP camera's Password (default: **admin**).
- 6 Channel amount:** Enter **1**.

- Tap **⚙**.
- In landscape mode:**
  - Tap a display area and then select the camera you would like to view on the left.
- In portrait mode:**
  - Tap **+** on one of the display areas and select the camera you would like to open.

**Need Help?**  
Latest software and manuals available on  
[www.flirsecurity.com](http://www.flirsecurity.com)



For support, visit  
[www.flirsecurity.com](http://www.flirsecurity.com)