



ADVANCED  
TECHNOLOGY  
VIDEO

IP PRODUCT SERIES

## >>> 2MP TRUE DAY/NIGHT, ON-BOARD STORAGE, IR, INTERIOR MINI-DOME CAMERA

IP MINI-DOME CAMERA

# IPMD2FI

- > Superior 2MP Full HD, 1920 x 1080 Resolution
- > TRUE Day/Night Functionality for Low-light Conditions
- > Highly Efficient H.264 Video Compression which Drastically Reduces Bandwidth and Storage Requirements
- > Progressive Scanning for Sharper Video Motion Images
- > 3.7 Wide Angle, Fixed Lens
- > Triple Video Streams Simultaneously, up to 30-ips, at 1080p Resolution using H.264 and MJPEG Compression
- > Powerful IR LED Lights for 0Lux Night-time Operation up to 60ft
- > Supports a Micro-SD Memory Card Slot for Local, Event Detection Recording
- > Backlight Compensation and Auto White Balance
- > Motion Detection (8 Windows), Privacy Masking (8 Windows) and FTP Image Upload
- > Up to 10 Simultaneous Connections through Remote Monitoring
- > View and Record up to 64 Cameras and View and Manage an Unlimited Number of ATV NVR Units with included ATVision IP Remote Management Software
- > ONVIF Compliant for Network Video Interoperability
- > PoE & 12VDC Power Options
- > Tough Polycarbonate Dome Housing with 3-Axis Gimbal
- > Auto Power Switch, Hot Failover Capability



# IP MINI-DOME CAMERA

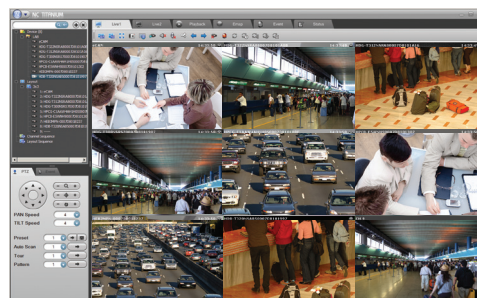
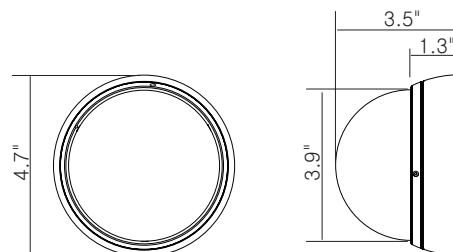
# IPMD2FI

## IP PRODUCT SERIES

## SPECIFICATIONS

MODEL	IPMD2FI
C A M E R A	Image sensor
	Active Array
	Lens
	Angle of View
	IR LED's
N E T W O R K	Min. Illumination
	Shutter Speed
	Video Compression
	Video Streaming
	Video Resolutions
G E N E R A L	Frame Rate
	Protocol
	Security
	Max. Connection
	Compatible 3rd Party VMS
G E N E R A L	API Programming Interface
	Alarm Events
	Video Buffering
	Motion Detection
	Network Time Synchronization
G E N E R A L	SD Recording
	Software Reset
	Factory Reset
	Auto Recovery
	Installation Tool
G E N E R A L	Upgrade
	Ethernet
	Micro-SD Card
	Operating Temperature
	Operation Humidity
G E N E R A L	Power Consumption
	Dimensions (W x H x D)
	Unit Weight
	Conformity Certifications

## DIMENSIONS



ATVision IP Remote Management Software

### Minimum System Requirements for ATVision IP Software

- Operating System: Microsoft Windows 7 (or 8) Professional/Enterprise/Ultimate
- CPU: Intel Core i7; RAM: 4GB; Ethernet connection: 1Gbps
- Graphics Card: Gaming rated, with 1GB at 1080p for Single Monitor; 2GB at 1080p for Multiple Monitors
- HDD's: 7200RPM and 64MB cache; 1 separate HDD for Operating System and Software; and 1 (2TB) HDD for Recording (refer to IP storage calculator)

## ACCESSORIES

- DB244 Wall Mount  
PDA328 Pendant Mount  
WA401 Wedge Angle Adapter

