

VB-S30D

Compact PTZ Network Video Camera

The World's smallest FULL HD, Optical Pan-Tilt-Zoom network video

QUICK FEATURES GUIDE:



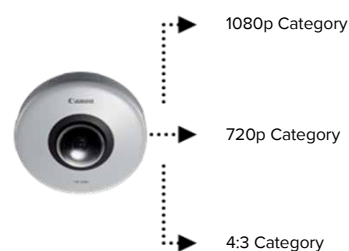
Smallest FULL HD, PTZ camera on the market

Very small design and light weight makes this camera suitable for a large range of industries and locations. Equipped with a Canon wide angle, 3.5 X optical zoom lens.



H264 Multi-Streaming

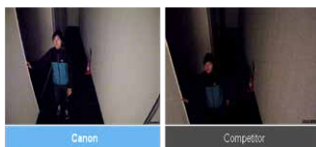
Enables simultaneous streaming for not only the same size videos, but also for different sizes as long as they are of the same category. Multiple quality and compression options across H264, JPEG and 1080P, 720P and 4:3 formats that can be viewed and recorded simultaneously according to system requirements.



Best in class Low light performance

During the day, or in the darkest of locations, you will get exceptional performance whether in colour or black and white.

Colour 0.95 lux / Monochrome 0.5 lux



Auto Smart Shade Control

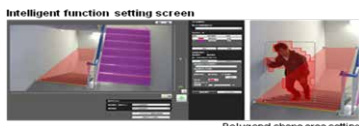
SSC is an extremely important function for security purposes that maintains image sharpness when shadows are generated by backlight or other causes.



Advanced Intelligent Functions

Functions include Moving Object Detection / Abandoned Object Detection / Removed Object Detection / Camera Tampering Detection / Passing Detection

Powerful and accurate functions to allow for easier and quicker surveillance.



Easy Installation

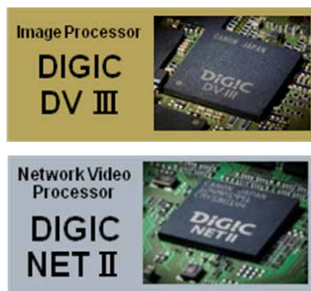
The body is small enough and light enough to be installed by just one person. Junction boxes and other accessories are not required, so they can be attached directly onto ceiling or wall surfaces.



Exclusive Dual Processing Power

Equipped with the renowned DIGIC DV III Image Processor, the same engine incorporated in Canon's EOS C300/EOS C300 PL cameras and XF Series professional video cameras.

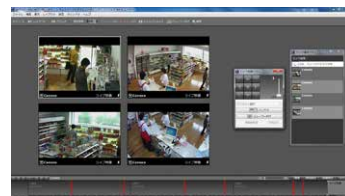
The high computational processing power results in exceptionally high quality, low noise, vivid colour reproduction, and smooth gradations. DIGIC NET II provides transmission of FULL HD resolution at 30 frames per second.



RM-LITE Software

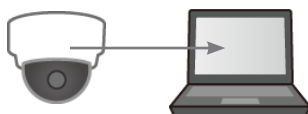
Advanced Network Video Recording Software that supports multiple cameras is included as standard, which enables recording, playback, and audio recording from multiple cameras.

For small-scale monitoring systems up to four cameras, a system can be constructed without incurring the initial cost for recording software. Larger scale software can also be purchased.



ONVIF S Compatibility

The VB-S30D support Profile S, so interoperability is guaranteed even with different ONVIF versions. This makes it easy to link with products made by other companies.



Subject to change without notice.

VB-S30D

Compact PTZ Network Video Camera

| | |
|---|---|
| Image Sensor | 1/4.85 type CMOS (primary colour filter) |
| Number of Effective Pixels | Approx. 2.1 million pixels |
| Scanning Method | Progressive |
| Lens | Canon 3.5x optical (4x digital zoom) zoom lens with auto focus |
| Focal Length | 2.25 (W) – 7.88 mm (T)*1 |
| F-number | F1.4 (W) – F2.6 (T) |
| Viewing Angle | Horizontal: 77.7° (W) – 20.7° (T) Vertical: 40.4° (W) – 11.6° (T) |
| Day/Night Switch | Auto/Manual |
| Min. Subject Illumination | Day Mode (colour): 0.95 lux (F1.4, shutter speed 1/30 sec., smart shade control off, 50IRE) 0.07 lux (F1.4, shutter speed 1/2 sec., smart shade control off, 50IRE) 0.025 lux (F1.4, shutter speed 1/2 sec., smart shade control on [7], 50IRE) Night Mode (monochrome): 0.5 lux (F1.4, shutter speed 1/30 sec., smart shade control off, 50IRE) 0.04 lux (F1.4, shutter speed 1/2 sec., smart shade control off, 50IRE) 0.015 lux (F1.4, shutter speed 1/2 sec., smart shade control on [7], 50IRE) |
| Focus | Auto/One-shot AF/Manual/Fixed at infinity |
| Shooting Distance (from front of lens) | 0.3 m (12 in.) – infinity |
| Shutter Speed | 1, 1/2, 1/4, 1/8, 1/15, 1/30, 1/60, 1/100, 1/120, 1/250, 1/500, 1/1000, 1/2000, 1/4000, 1/8000, 1/16000 sec. |
| Exposure | Auto/Auto (Flickerless)/Auto (Shutter-priority AE)/Manual (Shutter Speed, Gain) |
| White Balance | Auto/Light Source (Daylight Fluorescent/White Fluorescent/Warm Fluorescent/Mercury Lamp/Sodium Lamp/Halogen Lamp)/Manual (One-shot WB/R Gain/B Gain) |
| Metering Mode | Centre-Weighted/Average/Spot |
| Exposure Compensation | 9 levels |
| Smart Shade Control | Auto/Manual/Disable Auto: 3 levels (default setting) Manual: 7 levels – Brightens shaded areas of a video |
| AGC Limit | 5 levels |
| Pan Angle Range | 350° (±175°) |
| Tilt Angle Range | 90° (ceiling-mounted position: -90° – 0°) – When the horizontal direction of the camera is 0° |

Subject to change without notice.

| | |
|-----------------------------------|--|
| Moving Speed | Pan: Max. 120°/sec., Tilt: Max. 120°/sec. |
| Video Compression Method | JPEG, H.264 |
| Video Size | JPEG, H.264: 1920 x 1080, 960 x 540, 480 x 270 1280 x 720, 640 x 360, 320 x 180 1280 x 960, 640 x 480, 320 x 240 |
| Video Quality | JPEG, H.264: 5 levels |
| Frame Rate | JPEG: 0.1 – 30 fps H.264: 1/2/3/5/6/10/15/30 fps – Values represent streaming performance from the camera. – The frame rate may be reduced due to Viewer PC's specs, the number of clients accessing at the same time, network loads, video quality setting, type or movement of the subject or other reasons. |
| Max. Frame Rate | When streaming JPEG, H.264 (1920 x 1080): 30 fps When used in the following combinations: When streaming H.264(1) (1920 x 1080) and H.264(2) (all sizes) simultaneously: 15 fps When streaming H.264(1) (all sizes) and H.264(2) (1920 x 1080) simultaneously: 15 fps When streaming H.264(1) (1980 x 960) and H.264(2) (1980 x 960) simultaneously: 15 fps When streaming H.264(1) (1980 x 720) and H.264(2) (1980 x 720) simultaneously: 15 fps |
| I-Frame Interval | 0.5/1/1.5/2/3/4/5 sec. |
| Simultaneous Client Access | Max. 30 Clients + 1 Admin Client – H.264: Max. 10 Clients |
| Camera Control | Administrator, Authorized user, Guest user (level of control varies depending on user) Max. 50 user names and passwords registered for authorized users. |
| Access Control | User authority (user name and password), Host Access Restrictions (IPv4, IPv6) |
| Encrypted Communications | SSL/TLS, IPsec (Auto Key Exchange/Manual) |
| IEEE 802.1X | EAP-MD5, EAP-TLS, EAP-TTLS, EAP-PEAP |
| Protocol | IPv4: TCP/IP, UDP, HTTP, FTP, SNMP (MIB2), SMTP (Client), DHCP (Client), DNS (Client), ARP, ICMP, POP3, NTP, SMTP authentication, RTSP, WV-HTTP (Canon proprietary), ONVIF IPv6: TCP/IP, UDP, HTTP, FTP, SMTP (Client), DHCPv6 (Client), DNS (Client), ICMPv6, POP3, NTP, SMTP authentication, RTSP, WV-HTTP (Canon proprietary), ONVIF |
| AutoIP | Available |
| Audio Compression Method | G.711 μ -law (64 kbps) |

VB-S30D

Compact PTZ Network Video Camera

| | |
|-----------------------------------|---|
| Audio Communication Method | Sound Transfer Protocol by Canon |
| Privacy Mask | Number of registration: Max. 8 places, Number of mask colours: 1 (select from 9 colours) |
| View Restriction | Available |
| Preset | Max. 20 positions |
| Intelligent Function | Video: Detection Types: moving object detection, abandoned object detection, removed object detection, camera tampering detection, and passing detection Detection Settings: Max. 15 Volume: Volume Detection |
| Event Trigger Type | External Device Input, Timer, Intelligent Function (Video), Intelligent Function (Volume) |
| Image Upload | FTP/HTTP/SMTP (e-mail) Temporary storage memory in camera: Max. approx. 5 MB Frame Rate: Max. 10 fps (JPEG) Max. 30 fps (H.264) |
| Event Notification | HTTP/SMTP (e-mail) |
| On-Screen Display | Available |
| Daylight Saving Time | Available |
| Custom Settings | Number of registers: 4 Items to Reg.: Pan/Tilt/Zoom, Exposure, Smart Shade Control, Focus, White Balance, Image Quality Adjustment, Day/Night |
| Viewer | Camera-side: Admin Viewer VB Viewer Client-side: RM-Lite Viewer |
| Admin Tools | Privacy Mask Setting Tool Panorama Creation Tool View Restriction Setting Tool Preset Setting Tool Intelligent Function Setting Tool Log Viewer Recorded Video Utility |
| Included Software | VB Initial Setting Tool Backup Tool Restore Tool Memory Card Unmount Tool RM-Lite Proxy Authentication Admin Tools/Admin Viewer |
| Language | English/German/Spanish/French/Italian/Japanese |

| | |
|---|---|
| Operating Environment (PC specifications and OS (does not apply to RM-Lite)) | Recommended CPU: Intel Core i7-2600 Graphics Board: Not specified Memory: 2 GB or more Viewer Display: 1920 x 1080 or more OS: Windows Vista Ultimate/Business/Enterprise/ Home Premium SP2 32/64-bit Windows 7 Ultimate/Professional/Enterprise/ Home Premium SP1 32/64-bit Windows 8/Windows 8 Pro/Windows 8 Enterprise 32/64-bit Windows Server 2008 Standard SP2 32/64-bit Windows Server 2008 R2 Standard SP1 64-bit Windows Server 2012 Standard 64-bit Web Browser: Internet Explorer 8/9/10 32-bit Runtime Libraries: .NET Framework 3.5 SP1 (When using Internet Explorer 8/9) .NET Framework 4.5 (When using Internet Explorer 10) |
| Network Terminal | LAN x 1 (RJ45, 100Base-TX (auto/full-duplex/half-duplex)) |
| Audio Input Terminal (common for LINE IN & MIC IN) | φ3.5 mm (φ0.14 in.) mini-jack connector (monaural) Switch LINE IN/MIC IN in the setting page. LINE IN x 1 (connect to an amplifier microphone) or MIC IN x 1 (connect to a microphone w/o amplifier) |
| External Device I/O Terminal | Input x 1, Output x 1 |
| Memory Card | microSD Memory Card, microSDHC Memory Card, microSDXC Memory Card Compatible. Frame Rate: Max. 1 fps (JPEG) Max. 30 fps (H.264) |
| Operating Environment | Temperature: -10°C – +50°C (+14°F – +122°F) Humidity: 5% – 85% (without condensation) |
| Power Supply | PoE: PoE power supply via LAN cable (IEEE802.3af compliant) |
| Power Consumption | Max. 7.8 W |
| Dimensions | (φ x H) φ120 x 54 mm (φ4.72 x 2.13 in.) – excluding projections |
| Accessories | RBIP66DOMES Optional IP66 metal dome for VB-S Series cameras is available RBIP66SSDOMES Optional IP66 stainless steel dome for VB-S Series camera is available |
| Weight | Approx. <270 g |

Subject to change without notice.



For more information visit
canon.com.au/networkcameras
call **1800 021 167** or email
specialised.imaging@canon.com.au
canon.co.nz
call **0800 222 666**