



ADVANCED
TECHNOLOGY
VIDEO

IP PRODUCT SERIES

>>>2MP, TRIPLE STREAM, TRUE DAY/NIGHT,
IR, IP INTERIOR/EXTERIOR DOME

IR, INTERIOR IP DOME

IPFD2TI

- > Brilliant Video Quality with 2MP Full HD, 1920 x 1080 Resolution
- > Highly Efficient H.264 Video Compression which Drastically Reduces Bandwidth and Storage Requirements
- > Progressive Scanning for Sharper Video Motion Images
- > 3.5-16mm Vari-focal Auto-Iris Lens
- > Triple Video Streams Simultaneously up to 30-ips at 1080p Resolution using H.264 and MJPEG Compression
- > TRUE Day/Night Functionality for Low Light Conditions
- > Supports a Micro-SD Memory Card Slot for Local Event Detection Recording
- > Powerful IR LED Lights for 0Lux Night Time Operation up to 60ft
- > Backlight Compensation, 2D-DNR (Digital Noise Reduction) and Auto White Balance
- > Motion Detection (8 Windows), Privacy Masking (8 Windows) and FTP Image Upload
- > Up to 10 Simultaneous Connections through Remote Monitoring
- > View and Record up to 64 Cameras and View and Manage an Unlimited Number of ATV NVR Units with included ATVision IP Remote Management Software
- > ONVIF Profile S Compliant for Network Video Interoperability
- > Optional Wall and Pendant Mount Available
- > IP66 Weather Resistant Housing with 3-Axis Gimbal and Surface or Flush Mount Capability
- > PoE & 12VDC Power Option Capability

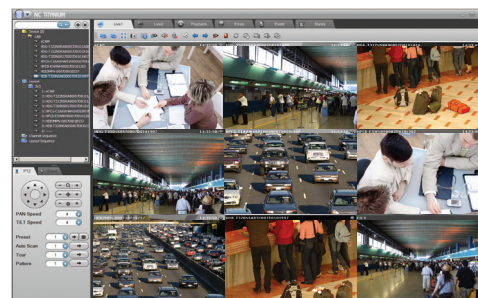
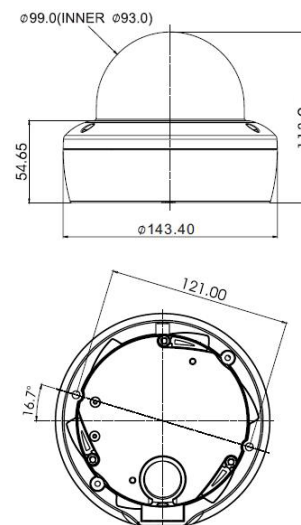


ONVIF | S

SPECIFICATIONS

MODEL	IPFD2TI
C A M E R A	Image sensor
	Active Array
	Lens
	Angle of View
	Min. Illumination
	IR Distance
N E T W O R K	Shutter Speed
	Video Compression
	Video Resolutions
	Frame Rate
	Video Streaming
	Protocol
	Security
	Remote Access
	Max. Connection
	Compatible 3rd Party VMS
	Alarm Events
	Video Buffering
	Motion Detection
	Network Time Synchronization
	Micro-SD Card Recording
	Software Reset
	Factory Reset
	Auto Recovery
G E N E R A L	Installation Tool
	Upgrade
	Micro-SD Card
	Ethernet
	Operating Temperature
	Operation Humidity
	Power Consumption
	Environmental Rating
	External Dimension (Dia x H)
	Unit Weight
	Conformity Certifications

DIMENSIONS



ATVision IP Remote Management Software

Minimum System Requirements for ATVision IP Software

- Operating System: Microsoft Windows 7 (or 8) Professional/Enterprise/Ultimate
- CPU: Intel Core i7; RAM: 4GB; Ethernet Connection: 1Gbps
- Graphics Card: Gaming Rated, with 1GB at 1080p for Single Monitor; 2GB at 1080p for Multiple Monitors
- HDD's: 7200RPM and 64MB cache; 1 separate HDD for Operating System and Software; and 1 (2TB) HDD for Recording (refer to IP storage calculator)

ACCESSORIES

- DB243W2 Wall Mount
- PDA7W Pendant Mount
- BTCG6 Tinted Bubble

