

Super LoLux HD2™

New JVC Super LoLux HD2 CCTV cameras

## SUMMER NIGHTS FROM DUSK TO DAWN WITH SLL HD2



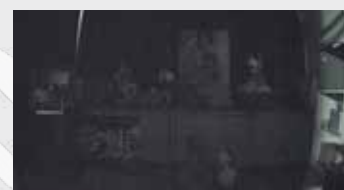
**Combining high performance with full HD resolution, the next generation Super LoLux HD2 cameras (EX models) offer superior colour reproduction even at low light.**

JVC's new Super LoLux HD2 IP cameras deliver outstanding performance and precise colour reproduction, and are equipped with newly-developed CMOS sensors for exceptional low light performance with full 1080p resolution. Sensitivity has been greatly improved from the first generation of these cameras and the new SLL HD2 (EX models) deliver impressive detail and colour – without requiring LEDs – at light levels as low as 0.05 lux (0.012 lux b/w).

The six models in the SLL HD2 range consist of three box cameras, two indoor domes and an IP66-rated outdoor dome, each with multi-codec support including M-JPEG, MPEG-4 and H.264 High Profile. There's improved smart backlight compensation too, for optimal image quality in difficult back-lit areas, while clever image processing ensures pictures are as clean as possible, whatever the lighting conditions.

And operating at as low as 64kbit/sec for slower network environments, with MTBF figures of 90,000 hours, the new Super LoLux HD2 cameras are exceptionally reliable.

**For further information on our CCTV solutions, please visit [www.jvcpro.eu/cctv](http://www.jvcpro.eu/cctv).**



**Previous Super LoLux HD camera**  
(real image taken at 0.1 lux)



**New Super LoLux HD2 camera**  
(real image taken at 0.1 lux)

- Next generation sensitivity
- Exceptional colour and detail
- Improved WDR performance

**JVC**

New JVC Super LoLux HD2 CCTV cameras

# SUPER LOLUX HD2

## TECHNICAL SPECIFICATIONS



	VN-H37U(EX) / VN-H57U(EX)	VN-H137BU(EX)	VN-H237BU(EX) / VN-H257U(EX)	VN-H257VPBU(EX)
<b>Image device</b>	1/3" Super LoLux HD2 CMOS, 1080p, 2.5M			
<b>Minimum illumination</b>	0.05 lux colour (25% AGC high) True D/N models: 0.012 lux b/w (25% AGC high), Easy D/N models: 0.042 lux (25%)			
<b>Day/night</b>	True D/N	Easy D/N	H237: Easy D/N H257: True D/N	True D/N
<b>Wide dynamic range</b>	Advanced back light compensation (BLC) technology			
<b>3D noise reduction</b>	Yes (Normal / High)			
<b>Other function</b>	4 patterns BLC, 8 areas privacy mask, 8 patterns programmable scene file, Motion detection, Audio detection (Audio model only), Tamper detection, Network failure detection, Digital PTZ (20 presets, Auto patrol, 8x digital zoom)			
<b>Lens</b>	Not included (CS mount)	3.0-9.0 mm 3x vari focal, F1.2		
<b>Focus adjustment</b>	H37: Manual H57: Auto/remote focus	Manual	H237: Manual H257: Auto/remote focus	Auto/remote focus
<b>Image compression</b>	H.264 High Profile / H.264 Main Profile / MPEG4 / Motion JPEG			
<b>Distribution</b>	H.264 High Profile: 1920x1080, 1280x960, 1280x720, 640x480, 320x240, Max 30 fps MPEG4: 640x480, 320x240, Max 30fps JPEG: 1920x1280, 1280x960, 1280x720, 640x480, 320x240, Max 30fps Triple stream via the same encoding simultaneously Dual stream via H.264+JPEG or MPEG4+JPEG, or single stream			
<b>Protocol</b>	TCP/IP, UDP/IP, FTP, ICMP, ARP, DHCP, SNMP, HTTP, DSCP, SMTP, RTP, RTSP, IGMP, IPv6, HTTPS, SNMP, ONVIF, AMX Device discovery			
<b>Maintenance tool</b>	IP address search/setup, Device search, Batch updater, Setting change/copy, Focus adjustment, VGA preview			
<b>Monitor out</b>	Yes			
<b>Audio (Line In/Out)</b>	Yes (H57)	-	Yes (H257)	Yes
<b>Recording</b>	SDHC local recording, VR-X1600U/3200U, SuperLoLux HD software, SuperLoLux NVR, Various VMS			
<b>Alarm I/O (In x2, Out x2)</b>	Yes (H57)	-	Yes (H257)	Yes
<b>Power (AC 24V support)</b>	Yes (H57)	-	Yes (H257)	Yes
<b>Vandal/dust/water-proof</b>	-	-	20 joule (IK10)	50 joule / IP66
<b>Working temperature</b>	-10 deg C to 50 deg C	-10 deg C to 50 deg C	-10 deg C to 50 deg C	-30 deg C (with optional heater) to 50 deg C
<b>MTBF</b>	90,000 hours			

For further information on our CCTV solutions,  
please visit [www.jvcpro.eu/cctv](http://www.jvcpro.eu/cctv).

**JVC**