

Starforce Pro Box Camera



GOLDEN STATE INSTRUMENT CO.

★ STAR FORCE CAMERA SERIES

Super HAD CCD II™



GS-5300CC

Starforce Pro Box Camera
With Infrared Cut Filter (ICR)

Low Light 0.00001 Lux
650 TVL Color Resolution



Lens Not Included

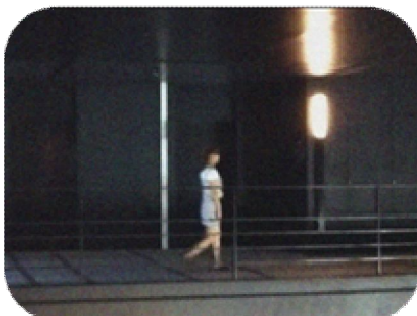
Our "Starforce" technology with Smart DNR technology prevents image ghosting and provides even greater low light performance, enabling the camera to see images in color at night with a minimum illumination of 0.00001 LUX, with no distance limitations. Using Sony's Super HAD II CCD coupled with the new and improved Star Force 2.0 DSP, this gives the camera unbeatable sensitivity with amazing natural color reproduction in day or low light conditions. With an Ultra High 650 TVL of color resolution, this gives the camera superior image quality unmatched by others. The built in Infrared Cut Filter (ICR) automatically adjusts during low light conditions such as twilight or sunset to produce realistic color images in all lighting conditions

Features:

- Ultra High 650 TVL Color Resolution
- Sony Super HAD II CCD
- Star Force 2.0 DSP (Digital Signal Processor)
- Smart DNR (Dynamic Noise Reduction)
- Minimum Illumination 0.0001 LUX
- DWDR (Digital Wide Dynamic Range)
- Dual Voltage 24 VAC / 12 VDC
- OSD (On Screen Display) Menu Controls
- Turbo AGC (Automatic Gain Control)
- GSI's DPC (Dead Pixel Correction)



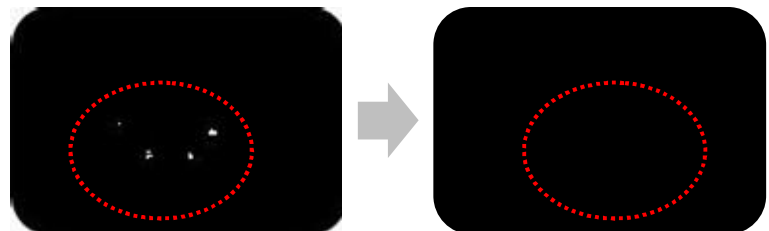
CONVENTIONAL DNR



GSI SMART DNR

GSI DPC (Dead Pixel Correction)

Automatically corrects dead pixels



Live Pixel Correction

3002 Dow Ave, suite 228, Tustin, CA 92780 USA
Website: www.goldenstateinst.com
Sales: 800-227-2330
Tech Support: 714-730-6889
Email: gsi@goldenstateinst.com

SPECIFICATIONS:

Signal System	NTSC
Image Sensor	1/3" SONY Super HAD II
DSP (Digital Signal Processor)	Starforce 2.0
Effective Pixels	768(H) x 494(V)
Scanning System	525 Lines 2:1 Interlace
Scanning Frequency (V)	59.94Hz
Resolution	Ultra High 650 TVL
Infrared LEDs	None
Min. Illumination	0.00001 LUX
Light Compensation	BLC, DWDR, HME
S/N Ratio	More than 67dB
Shutter Speed	1/60 ~ 1/1000,000 sec.
Video Output	1.0 Vp-p (75Ω)
Sync System	Internal / Line Lock
Voltage	Dual Voltage 12VDC/24VAC
Power Consumption	180mA
Dimensions Camera	2.9" Diameter 4.5" Length
Weight	2.2 lbs.
Operating Temperature	-50°F to 122°F

Operating Instructions:

OSD Controls: Use buttons on rear side of camera

CENTER: Enter OSD Menu/Select Option

UP: Moves Cursor Up

DOWN: Moves Cursor Down

LEFT: Moves Cursor Left/ Change selected item parameters

RIGHT: Moves Cursor Right/ Change selected item parameters

OSD (On Screen Display) Menu

EXPOSURE	•LENS •BACKLIGHT •AGC • SENS-UP •3D DNR
COLOR	•WB MODE •RED GAIN •BLUE GAIN •COLOR MODE
DAY & NIGHT	•D&N MODE •NIGHT C •NIGHT A
FUNCTION	•MIRROR •SHARPNESS •GAMMA •SLC •NIGHT UP
MOTION	•AREA SET •SENSITIVITY •SHOW INDICATOR •EXTER OUT
PRIVACY SET	7 MASKING ZONES •TITLE •DPC SET •MONITOR •LANGUAGE •OSD COLOR •COMMUNICATION •FACTORY SET
EXIT	•SAVE & EXIT •EXIT

WARNING:

Do Not Point Camera Directly into the sun.

Do Not cut video or power wires

Observe Correct Voltage and Polarity

Failure to Observe Warnings May Void Warranty

LENS

DC for Auto Iris or Manual (DC Should Be Set)

BACKLIGHT

BLC (Back Light Compensation)

DWDR (Digital Wide Dynamic Range)

HME (Highlight Mask Exposure)- Mask Bright Headlights

AGC (AUTO GAIN CONTROL)

The higher the gain, the brighter the image

SENS-UP

When it is night or dark the camera automatically detects the light level and maintains a color picture at night

White Balance

Use White Balance to adjust the screen color
ATW, MANUAL, AWC-SET

3D DNR (Digital Noise Reduction)

Smart 3D DNR automatically adjust DNR Levels during motion

DNR (Digital Noise Reduction)

Reduces the background noise in low luminance environments

D&N MODE (Day/Night)

Set to "COLOR" to Enable Starforce Mode

Set to "AUTO" For Black and White at night