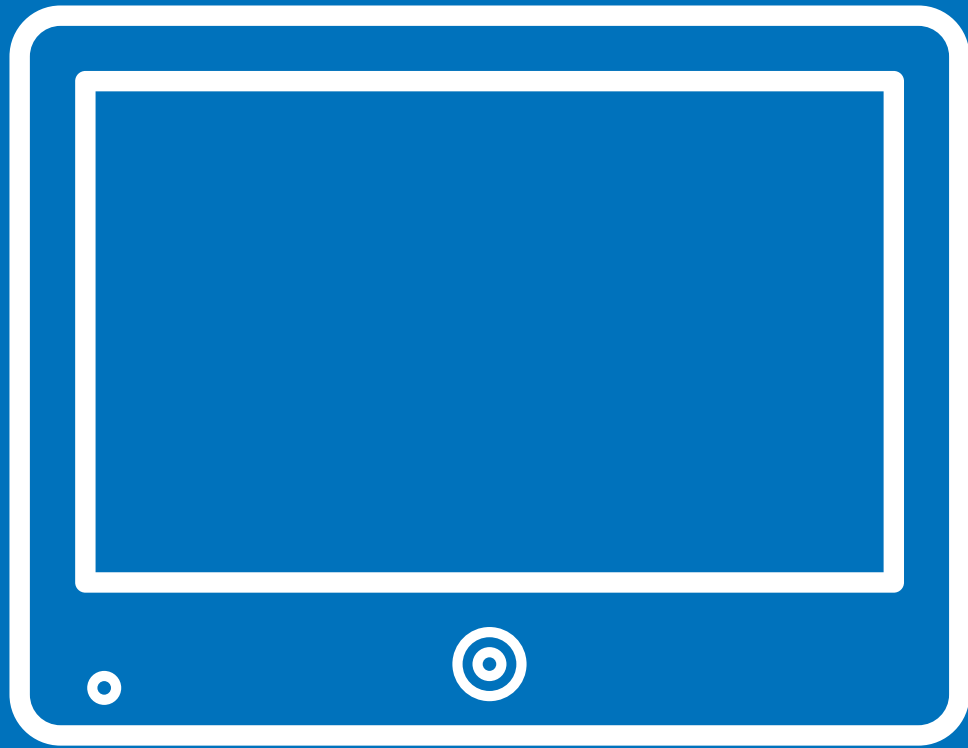



Public View Monitor Manual

A-SERIES

v07.10.15



Warning & Compliance	1
Important Safeguards	2
Hardware Overview	3
PVM Exterior	4
Back Panel Connections	5
Remote & Button Pad	6
SD-Card	7
Display Menu	8
OSD Menu Overview	9
Video Menu	9-10
Display Menu	10
Audio & System Settings	11
Camera - Quick Setup	12
Mini CD Method - IP Utility	13-14
Software Download Method - IP Utility	14
Camera Access & Setting Reset	15

	CAUTION RISK OF ELECTRIC SHOCK DO NOT OPEN	
<p>CAUTION : TO REDUCE THE RISK OF ELECTRIC SHOCK, DO NOT REMOVE COVER (OR BACK), NO USER SERVICEABLE PARTS INSIDE. REFER SERVICING TO QUALIFIED SERVICE PERSONNEL</p>		



The lightning flash with an arrowhead symbol, within an equilateral triangle is intended to alert the user to the presence of uninsulated dangerous voltage within the product's enclosure that may be of sufficient magnitude to constitute a risk of electric shock to persons.



The exclamation point within an equilateral triangle is intended to alert the user to the presence of important operating and maintenance (servicing) instructions in the literature accompanying the appliance.

INFORMATION - This equipment has been tested and found to comply with limits for a Class A digital device, pursuant to part 15 of the FCC Rules. These limits are designed to provide reasonable protection against harmful interference when the equipment is operated in a commercial environment. This equipment generates, uses, and can radiate radio frequency energy and, if not installed and used in accordance with the instruction manual, may cause harmful interference to radio communications. Operation of this equipment in a residential area is likely to cause harmful interference in which case the user will be required to correct the interference at his own expense.

WARNING - Changes or modifications not expressly approved by the manufacturer could void the user's authority to operate the equipment.

CAUTION : To prevent electric shock and risk of fire hazards:
Do NOT use power sources other than that specified.
Do NOT expose this appliance to rain or moisture.

This installation should be made by a qualified service person and should conform to all local codes.



RoHS
This directive restricts the use of six hazardous materials in the manufacture of various type of electronic and electrical equipment.



USA (FCC)
This device has been tested and found to comply with the limits of Class A computing device pursuant to part 15 of the FCC rules.



Europe (CE)
By affixing the CE marking, the manufacturer assures that the item meets all the essential requirements of all applicable EU directives.



UL Listed
UL Listing means that UL has tested representative samples of the product and determined that it meets UL's requirements. These requirements are based primarily on UL's published and nationally recognized Standards for Safety..

1. Read Instructions

All the safety and operating instructions should be read before the appliance is operated.

2. Retain Instructions

The safety and operating instructions should be retained for future reference.

3. Cleaning

Unplug this equipment from the wall outlet before cleaning it. Do not use liquid aerosol cleaners. Use a damp soft cloth for cleaning.

4. Attachments

Never add any attachments and/or equipment without the approval of the manufacturer as such additions may result in the risk of fire, electric shock or other personal injury.

5. Water and/or Moisture

Do not use this equipment near water or in contact with water.

6. Accessories

Do not place this equipment on an unstable cart, stand or table. The equipment may fall, causing serious injury to a child or adult, and serious damage to the equipment. Wall or shelf mounting should follow the manufacturer's instructions, and should use a mounting kit approved by the manufacturer.

7. Power Sources

This equipment should be operated only from the type of power source indicated on the marking label. If you are not sure of the type of power, please consult your equipment dealer or local power company.

8. Power Cords

Operator or installer must remove power and communications connections before handling the equipment.

9. Lightning

For added protection for this equipment during a lightning storm, or when it is left unattended and unused for long periods of time, unplug it from the wall outlet and disconnect the cable system. This will prevent damage to the equipment due to lightning and power-line surges.

10. Overloading

Do not overload wall outlets and extension cords as this can result in the risk of fire or electric shock.

11. Objects and Liquids

Never push objects of any kind through openings of this equipment as they may touch dangerous voltage points or short out parts that could result in a fire or electric shock. Never spill liquid of any kind on the equipment.

12. Servicing

Do not attempt to service this equipment yourself. Refer all servicing to qualified service personnel.

13. Damage Requiring Service

Unplug this equipment from the wall outlet and refer servicing to qualified service personnel under the following conditions:

- A.** When the power-supply cord or the plug has been damaged.
- B.** If liquid is spilled, or objects have fallen into the equipment.
- C.** If the equipment has been exposed to rain or water.

D. If the equipment does not operate normally by following the operating instructions, adjust only those controls that are covered by the operating instructions as an improper adjustment of other controls may result in damage and will often require extensive work by a qualified technician to restore the equipment to its normal operation.

E. If the equipment has been dropped, or the cabinet damaged.

F. When the equipment exhibits a distinct change in performance —this indicates a need for service.

14. Replacement Parts

When replacement parts are required, be sure the service technician has used replacement parts specified by the manufacturer or that have the same characteristics as the original part. Unauthorized substitutions may result in fire, electric shock or other hazards.

15. Safety Check

Upon completion of any service or repairs to this equipment, ask the service technician to perform safety checks to determine that the equipment is in proper operating condition.

16. Field Installation

This installation should be made by a qualified service person and should conform to all local codes.

17. Correct Batteries

Warning: Risk of explosion if battery is replaced by an incorrect type. Dispose of used batteries according to the instructions.

18. Tmra

A manufacturer's maximum recommended ambient temperature (Tmra) for the equipment must be specified so that the customer and installer may determine a suitable maximum operating environment for the equipment.

19. Elevated Operating Ambient Temperature

If installed in a closed or multi-unit rack assembly, the operating ambient temperature of the rack environment may be greater than room ambient. Therefore, consideration should be given to installing the equipment in an environment compatible with the manufacturer's maximum rated ambient temperature (Tmra).

20. Reduced Air Flow

Installation of the equipment in the rack should be such that the amount of airflow required for safe operation of the equipment is not compromised.

21. Mechanical Loading

Mounting of the equipment in the rack should be such that a hazardous condition is not caused by uneven mechanical loading.

22. Circuit Overloading

Consideration should be given to connection of the equipment to supply circuit and the effect that overloading of circuits might have on over current protection and supply wiring. Appropriate consideration of equipment nameplate ratings should be used when addressing this concern.

23. Reliable Earthing (Grounding)

Reliable grounding of rack mounted equipment should be maintained. Particular attention should be given to supply connections other than direct connections to the branch circuit (e.g., use of power strips).

Hardware Overview

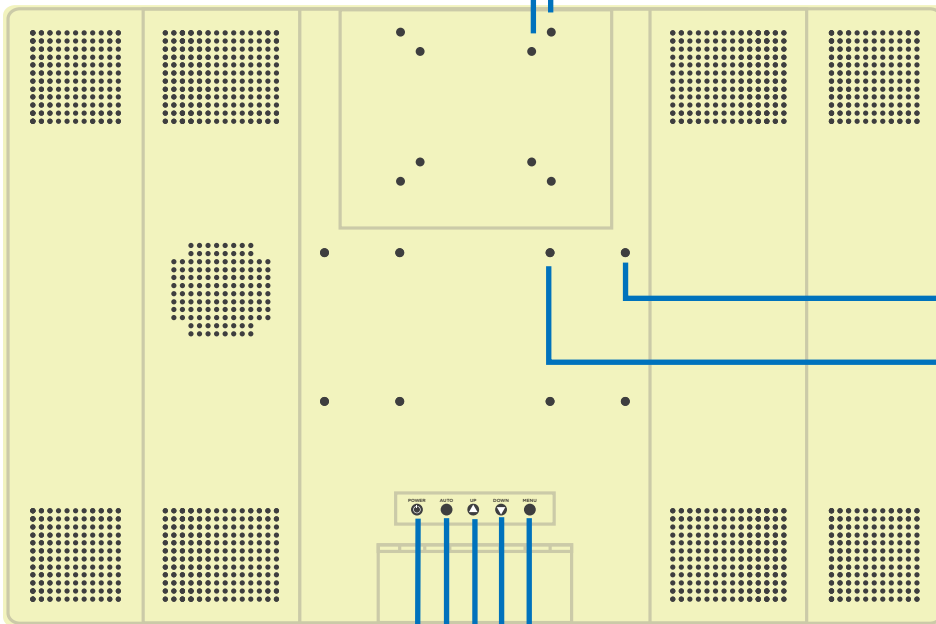
1

FRONT



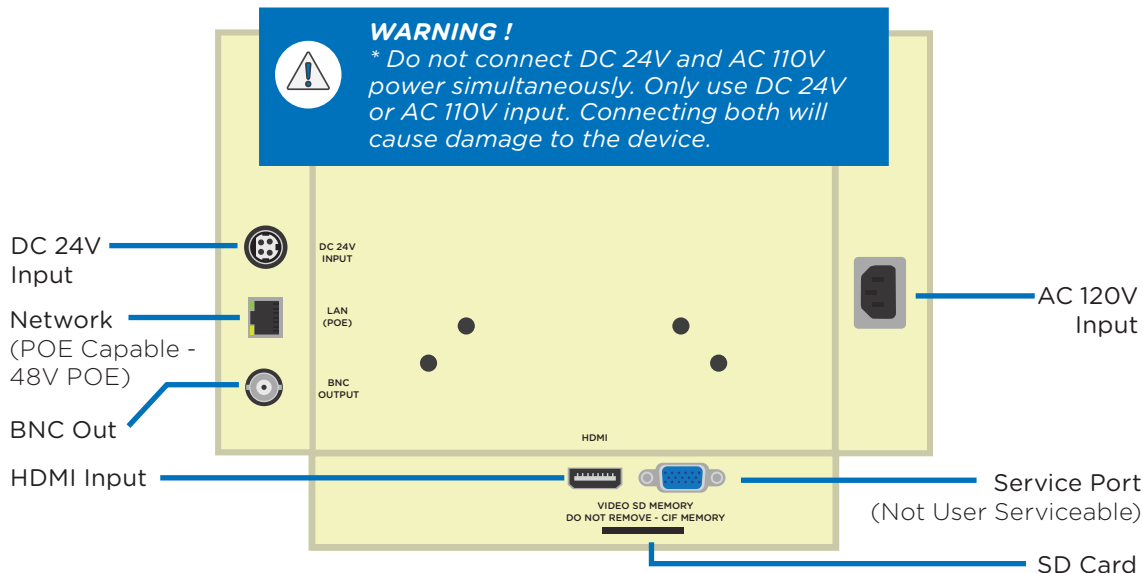
- IP Camera Lens
- Remote Receiver
- LED Flasher

BACK

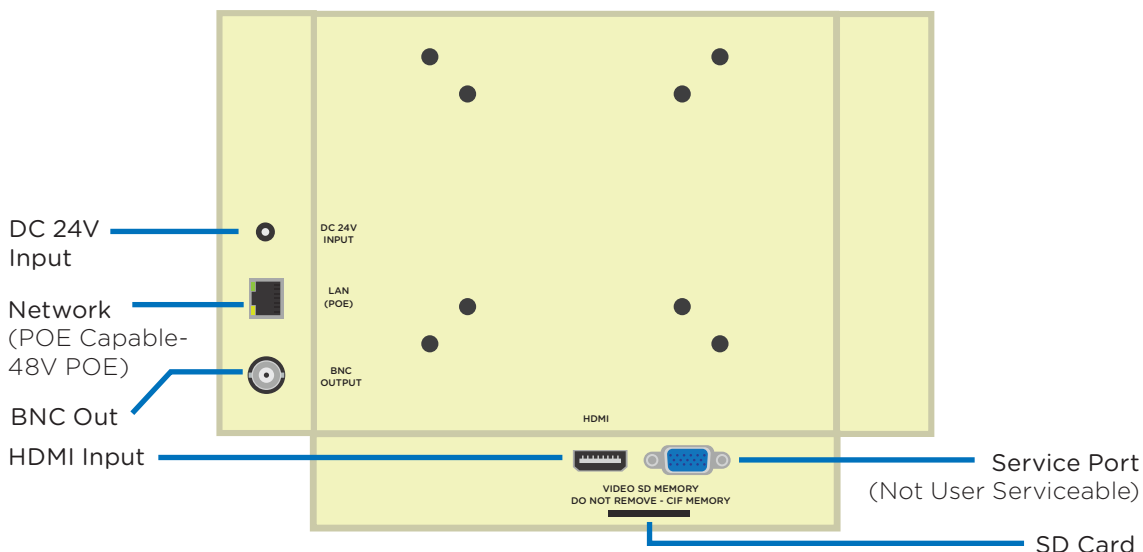


- VESA 75 x 75
- VESA 100 x 100
- VESA 100 x 200 (27" & 32" Only)
- VESA 100 x 100
- Power Button
- Auto Button
- Up Button
- Down Button
- Menu Button

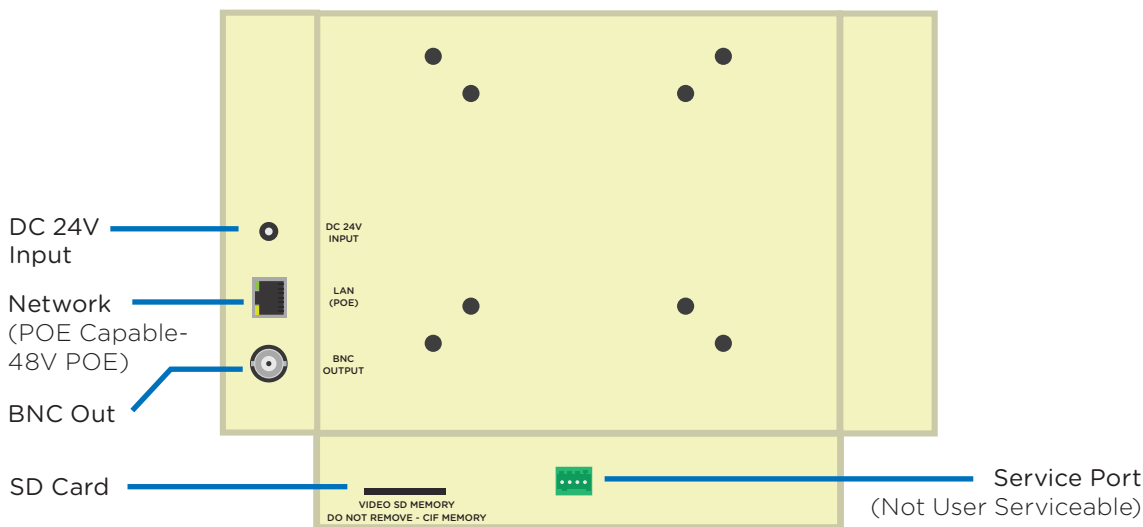
32 Inch



27 Inch

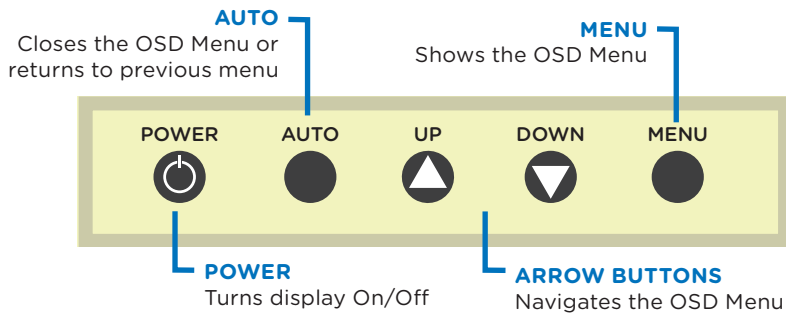


21 Inch



 Note: A-Series PVMs which have a manufactured date prior to May 19th, 2015 do not have SD-Card or BNC Output features.

BUTTON PAD



REMOTE CONTROL



Note: Swap, PIP, and Auto buttons are non-functioning for this device.

When the display is turned OFF (with the remote control or the back-panel button), the camera will continue to supply video to a remote computer display or DVR if connected.

Upload SD Card Content

The PVM is capable of displaying JPEG images or AVI video files from an SD Card.

Note: A-Series PVMs manufactured prior to May 19th, 2015 do not have SD-Card or BNC Output features.

The preferred JPEG image size is 1024 x 768. **Load files directly onto the card. Do not place files into folders.** Skip to step 6 below.

The preferred video format for Video-on-Video (VOV) is AVI with a maximum resolution size of 720 x 540. If you already have a supported video, simply load it onto the SD Card.

To convert an unsupported video to the correct AVI format, follow guidelines below:

1. Download VLC

Download, install, & open the free program VLC. <http://www.videolan.org/vlc/index.html>

2. Convert

From the **File** menu select **Convert/Stream**.

3. Drop Media

Drag/Drop the desired video into the box that says “**Drop Media Here**”.

4. Choose Profile

A) Under **Choose Profile**, Click the **Customize** button. Select **AVI** under the Encapsulation menu.

B) Click the **Video codec** tab, under the **Codec** dropdown, select **DIVX 3**. In the **Resolution** field, enter **720** for width, and **540** for height.

Note: 640x480 will also work. (The Bitrate and Frame Rate should automatically populate based on the quality of the original video).

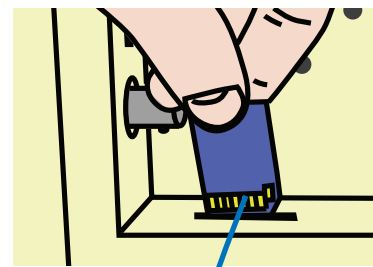
C) Click **Apply**.

5. Choose Destination

Under **Choose Destination**, click **Save File As > Browse** to select the SD Card in which you would like to save the file to. **(Load files directly onto the card. Do not place files into folders).** Click **Save** when the progress bar has completed loading.

6. Insert Card into PVM

Insert the SD Card into the PVM with the contacts facing outward (see image on right). Push the card down until it clicks into place.



Contacts Facing Out

7. Power Cycle

Power cycle the unit by pressing the power button on the back of the PVM, or on the remote control, or by unplugging the power cord.

8. Set Viewing Options

In the PVM's OSD menu, under Display, make sure Image Mode is set to Camera VOV Switch or SD-Video to display content full-screen.



Note: If using an Apple Computer, you will not be able to preview an AVI file.

Note: The SD Card player is not High Definition.

Note: If the video is not formatted/sized correctly (too large), the VOV window will display a blue “Home” screen.

Display Menu

2

OSD Menu

Using the remote control, or button pad located on the back of the device, press the Menu button. The following selections will appear.



Video

Display

Audio

System Settings

Video: Adjust picture settings such as contrast, brightness, color, tint, sharpness, color temperature, and select from video image presets.

Display: Select aspect ratio, and select the display source.

Audio: Raise or lower volume of SD Card content.

System Settings: Change Language, OSD Settings, Key Lock, and Message Control settings.



Camera: At the bottom of the OSD menu, the video image resolution and refresh rate will appear. This cannot be changed. This camera is only capable of displaying images at 720p resolution to the PVM.



Note: Within the Axis camera management software, you will see an option to set "Capture Mode" to 1080p. Doing so will disable the camera from displaying on the PVM screen.

Video



• **Contrast:** Adjust to set the white level so that the images are at their brightest without losing definition in the white portions of the image. Setting the too high will result in an oversaturated image.

• **Brightness:** Adjust to set the black level so that the images are at their brightest while the black portions are still black. Do not adjust too high where the black portions of the image become gray or the image will have a "washed out" appearance.

Video continued...

- **Color:** (21" model only) Adjust to achieve a realistic image of the items within the viewing area.
- **Saturation:** (27" & 32" models only) Adjust to achieve a life-like separation between colors.
- **Tint:** Adjust if the image has bluish or reddish tint to the white portions of the image.
- **Sharpness:** Adjust lower if the image appears too grainy or pixilated. Increase if the image appears too soft.

Advanced-

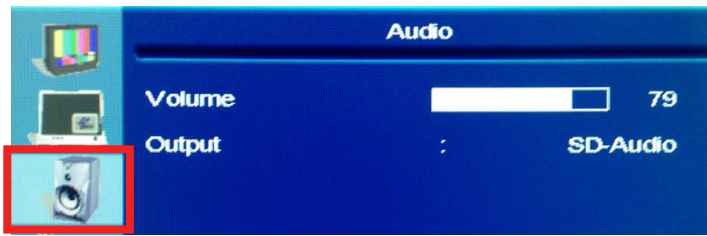
- **Video Mode:** Select from video image presets (Normal, Cinema, Vivid, Natural).
- **Color Temperature:** Select from color temperature presets (Cool, Natural, Warm).

Display



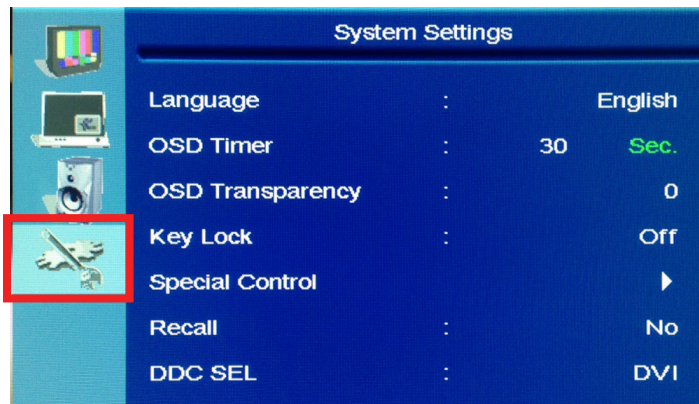
- **Aspect Ratio:** Select the display aspect ratio (Full Screen, Cinema Scope, 4:3, Pillar Box Expand, 1:1). Select Full Screen to correctly display the image without stretching.
- **Image Mode:** Select the video display source. (Camera VOV Switch, Camera, SD-Video, *HDMI, *Switch HDMI, *Switch SD-Video). ***HDMI, Switch HDMI, and Switch SD-Video modes only available on 27" & 32" models only.**
- ***Camera Video-on-Video (VOV) Switch-** Displays SD Card content in the corner of the display with camera image full screen.
- ***Switch HDMI-** Alternates Camera image and HDMI source full-screen. Set the duration to show Camera image on-screen, and duration of SD Card content. (5-60 sec.)
- ***Switch SD-Video-** Alternates Camera image and SD Card content full-screen. Set the duration to show Camera image on-screen, and duration of SD Card content. (5-60 sec.)
- **PIP Size:** Change the size of the SD Card VOV window. (Large, Middle, Small)
- **PIP Position:** Change the corner in which the VOV is displayed. (Bottom-Right, Bottom-Left, Top-Left, Top-Right)
- **VOV Switch Open Time:** Select the duration in which VOV content is displayed on screen. (1-10 sec.)
- **VOV Switch Close Time:** Select the duration in which VOV content is inactive on screen. (1-10 sec.)

Audio



- **Volume:** Raise or Lower the volume for the SD Card content. Alternatively, you can use the volume buttons on the remote control to set volume level.
- **Output:** Choose the audio output signal (SD-Audio, Chime). *Note: Chime feature not available or disabled on A-Series devices.*

System Settings



- **Language:** Display the OSD menu in the following languages: English, Korean, French, Dutch, Italian (English and Spanish only on 27" & 32" models). *Note: Changing the Language does not change the flashing on-screen message. This must be changed in the Special Control > Message setting.*

- **OSD Timer:** Set the time in seconds before the OSD menu disappears.
- **OSD Transparency:** Set the transparency level of the OSD menu.
- **Key Lock:** Turning Key lock on will disable the back panel buttons. Remote control will be required for future OSD changes.

Special Control-

- **Message On/Off:** Turn the on-screen message on or off.
- **Message:** Select from preset on-screen messages (Recording in Progress, Welcome, Grabacion en Progreso, Bienvenida). There are also two selections that alternate the English and Spanish versions of these messages (Flash must be set to "ON" for these selections).
- **Message Position:** (27" & 32" models only) Display message on top or bottom of screen.
- **Flash:** Turning Flash "ON" enables the on-screen message to flash on and off. If bilingual message is selected, this option must be "ON" to see message in both languages.
- **LED Control:** Turn the flashing LED on the front of the display on or off.
- **Recall:** Pressing Enter while recall is highlighted will recall the display's default factory settings. Resets Video, and select System Settings only. Does not effect camera settings.
- **DDC SEL:** Device service port selection. *Note: DDC SEL feature disabled on this device.*

Camera | Quick Setup

3

Camera Overview

The A-Series PVMs feature an Axis M1025 camera built-in. This IP camera is POE capable (48V POE). When using POE, the camera will continue to be powered, and output video even if the main 24VDC (or 110VAC) power is disconnected from the PVM.

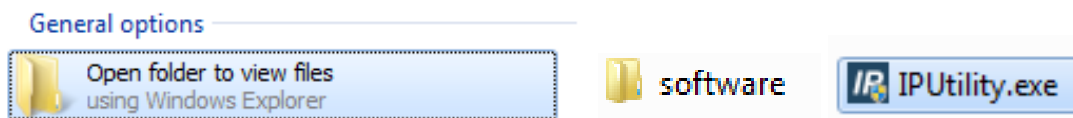
You can quickly view, setup, and configure the Axis IP camera inside the PVM by using the included software on the Mini-CD. If your computer does not have a Mini-CD capable drive you can download the software direct from the Axis website:
www.Axis.com/techsup/software

For more detailed information on setting up the Axis camera, refer to the full user guide here:
www.Axis.com/files/manuals/um_m1025_63354_en_1505.pdf

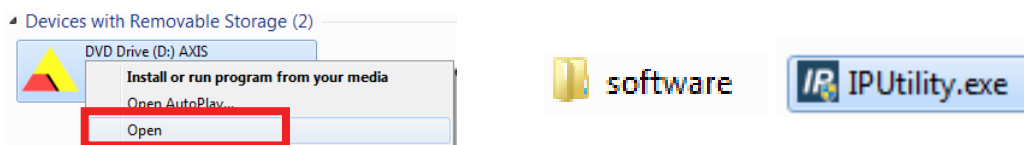
Mini-CD Setup Method

Run Axis IP Utility

Insert the CD into your computer and select the **Open folder to view files** option. Open the **software** folder. Double click the **IPUtility.exe** file and follow the prompts to download and open.

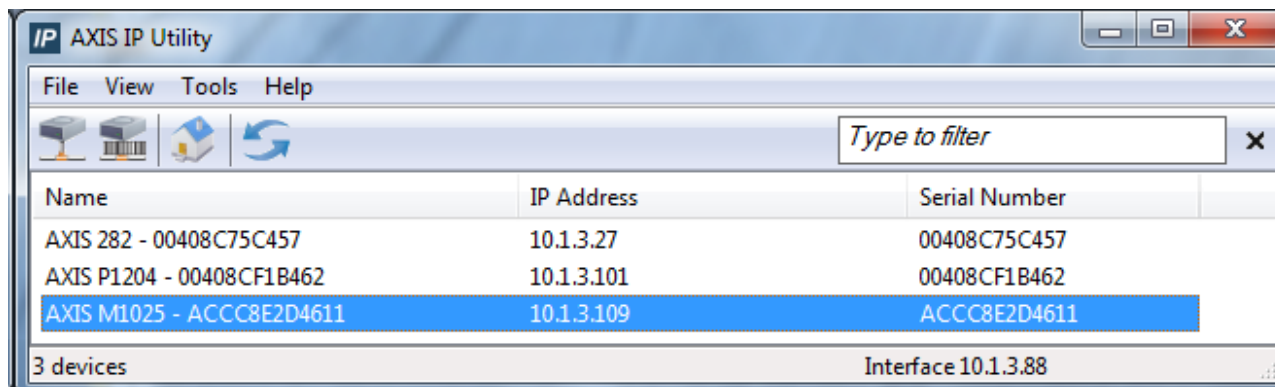


If you initially choose to run the program, close the program, and **Right-click on the CD's Axis icon**. Click **Open > software > IPUtility.exe**



Determine IP Address

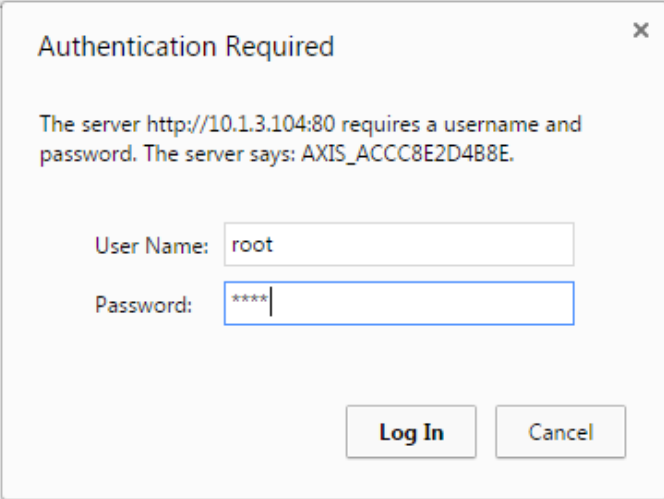
Find the axis camera on the network. Double-click the **AXIS M1025** from the list. If multiple PVMs are connected, use the Serial number shown on the Owner Authentication card included with the PVM to find the correct PVM from the list, or simply connect to any M1025 from the list until you choose the desired PVM view.



Note: Each A-Series PVM includes an Owner Authentication Key which shows the Serial number for the unit. Keep this key in a safe place and if multiple PVMs are present, document which unit the serial number is associated with for easy service in the future.

Login to camera


Use the default Username and password below to login to your camera. If the default settings do not work, the camera has probably been set up already. Locate the correct username and password, or refer to the next page for resetting the camera.

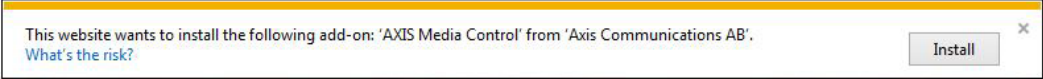


Default Username: **root**
Default Password: **pass**



If no image is displayed, there might be too many viewers, or the browser configuration may have to be changed. See help for detailed instructions on how to do this.

*Note: If you see the message above, follow this procedure: Run Internet Explorer as administrator. To do so, Right-click the Internet Explorer icon and select **Run as administrator**. Turn on **Compatibility View** (found under "Tools" menu, or by clicking the Tools Gear  icon). Click "Add" to add the IP address to the list. Install plugin when prompted (click accept or install on the pop-up banner on the bottom of the screen).*



Tip: When the camera's IP address has been located, you can simply type in the camera's IP address into an Internet Browser (Internet Explorer, Chrome, Firefox, etc.) to view and setup the PVM's camera.

Note: The computer must be connected to the same network as the camera.

Software Download Method

For computers without Mini-CD drive capable, you can download the software direct from the Axis website at www.Axis.com/techsup/software

Register Account with Axis

Before you can download software from the Axis website, you must set up a user profile.

Download AXIS IP Utility

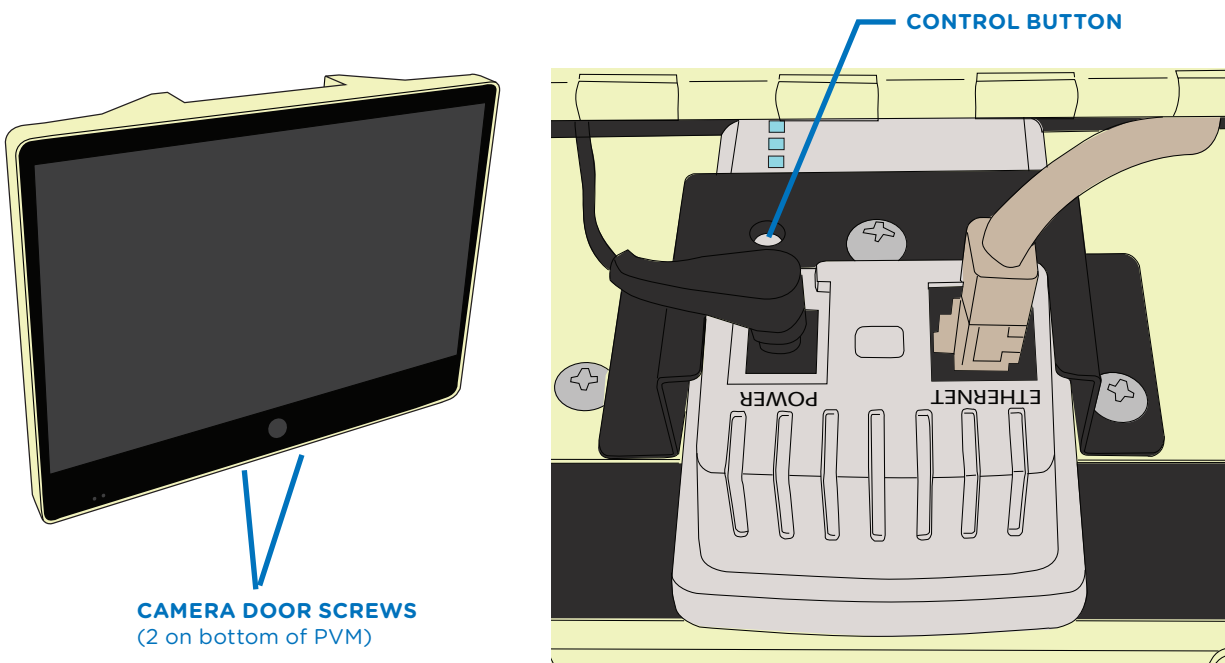
AXIS IP Utility helps you set the IP address of an Axis network video product. This is the primary IP setting tool for Axis network video products.

Connect

Refer to the Mini-CD instructions above and on the previous page to complete connection.

Camera Access

It may be necessary to access the Axis camera located inside the PVM. To access, remove the 2 door screws located on the bottom of the PVM. Keep these screws in a safe place to close the access door when finished.



Camera Reset



Note: Reset to default should be used with caution. A reset to defaults will reset all settings, including the password, IP address, and display orientation to factory default values.

To reset the product to the factory default settings:

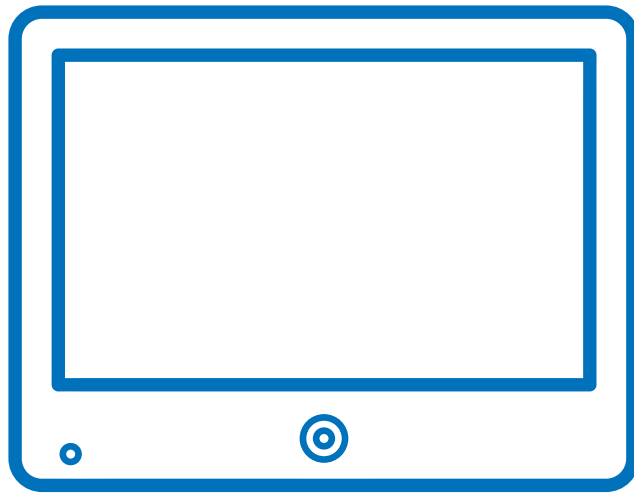
1. Disconnect main power from the product.
2. Press and hold the control button (location shown in images above) and reconnect power.
3. Keep the control button pressed for 30 seconds. *Note: You will **NOT** see a visual indicator of successful reset.*
4. Release the control button. The process is complete.
5. Login to the camera on your PC using the procedure and the default password shown on the previous pages. You will be asked to enter (and confirm) a new password, and set your power line frequency (50Hz or 60Hz).

Reset will invert the camera image. To correct video orientation, go to Setup > Video > Video Stream, and set "Rotate Image" to 180 degrees. Click "Save" to apply the change.

If using DHCP server, the IP address will not change. If no DHCP server is available on the network, the default IP address is 192.168.0.90



Note: It is also possible to reset parameters to factory default via the web interface. Go to: Setup > System Options > Maintenance.



clintonelectronics