

Discover 750 Series

700 TVL 960H Indoor/Outdoor Vandal-Resistant Mini-Domes

Features That Make a Difference:

- Sony image sensor provides best low-light performance
- 700 TVL High Resolution
- Wide Dynamic Range (WDR) for clear images even under challenging environments
- 2.8-10mm or 9-22mm / F1.2 varifocal auto iris lens
- IR illuminators for operation down to 0 lux scenes (Outdoor only)
- True Day/Night (TDN) mode
- 3-axis gimbal for easy positioning
- Quick-install adapter for easy installation (Indoor only)
- Vandal-resistant and IP-rated outdoor housing
- Service jack with second video output for camera setup
- 15 programmable privacy zones
- 12VDC/24VAC



The Discover 750 Series Mini-Domes, both indoor and outdoor models, provide exceptional performance, ease of installation, and flexible configuration and mounting options. With excellent Wide Dynamic Range (WDR), True Day/Night (TDN) mode and precise color reproduction, the mini-domes accurately capture all of the critical details in a scene including highlights, shadows and everything in between while maintaining image quality and color accuracy.

Leveraging image sensor technology, the Discover 750 Series Mini-Domes require just 0.1 lux of illumination to produce usable, color images at a full 30 frames per second. The cameras are the natural choice in both indoor and outdoor environments

The sensor technology eliminates image-compromising visual noise (i.e. glare, reflections) yielding more efficiently compressed images and saving valuable storage space on DVRs and video networks.

With an advanced, pivoting, 3-axis gimbal, the cameras can be easily positioned at exactly the right angle whether mounted on ceilings or walls. Designed for fast and efficient installation with a patent-pending, quick-install adapter, these mini-domes can be installed with minimum effort. Accessible lenses allow critical focus and focal length adjustments. The outdoor mini-dome is available with optional integrated IR illuminators for operation in situations where no visible lighting is present (0 lux).

The outdoor mini-dome includes a high-impact, vandal-resistant dome housing built to withstand the harshest environments. The camera housing is IP66-rated for complete protection against dust and other debris, and against water damage. An optional heater provides extra protection in cold weather environments.

Specifications

Operational

Imager	Sony 1/3" Super HAD-II Wide Dynamic
Horizontal Resolution	700 TVL
Active Pixel Count (H x V)	758 x 540
Lens (Varifocal Auto Iris)	2.8-10mm: F1.2-2.4; 9-22mm: F1.4
Scanning Frequency	60Hz (NTSC); 50Hz (PAL)
Min. Scene Illumination	Day mode: 0.1 lux (50IRE, F1.2, 30fps) Night mode: 0.3 lux (non-IR domes), 0 lux (outdoor IR dome)
Iris Control	DC auto
S/N Ratio	>48dB
Synchronization	Internal or line lock
Shutter Speed	1/60-1/30, 720 sec (NTSC) 1/50-1/30, 720 sec (PAL)
IR Illuminator	850nm/20m (Outdoor only)

Controls

AGC	Day: 0-60dB, Night: 0-60dB
Wide Dynamic Range	102dB typical, 120dB max.
AES	Yes
BLC	Full range
White Balance	ATW, AWB, Manual
Auto White Balance Range	2800K-9100K (normal); 2000K-11000K (extended)
Day/Night	True Day/Night
Digital Zoom	1x - 8x
Brightness	Adjustable
Sharpness	Adjustable
Noise Reduction	3D motion adaptive
Privacy Zones	15 programmable
Mirror	Horizontal, vertical or both
Onscreen Display	Camera ID and menus

Connectors

Video Output..... Composite

Electrical

Voltage..... DC 10.8V-13.3V, AC 19.2V-28.8V
Power Consumption..... 2.2W (max.);
5.1W (max.) with IR and True Day/Night on

Mechanical

Dimensions

Indoor..... 120.2 x 98.7 mm (4.7 x 3.9 in)
Outdoor..... 136 x 94.2 mm (5.35 x 3.7 in)

Weight

Indoor..... 270g (0.60 lbs)
Outdoor..... 560g (1.23 lbs)

Housing Material..... Polycarbonate

Housing Color

White..... RAL 9003, Pantone® 705
Black..... RAL 9017, Pantone Process Black

Environmental

Operational Temperature

Without Optional Heater..... -10°C to 50°C (14°F to 122°F)
With Optional Heater..... -40°C to 50°C (-40°F to 122°F)

Storage Temperature..... -20°C to 60°C (-4°F to 140°F)

Relative Humidity..... 90% (non-condensing)

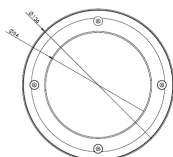
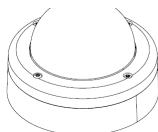
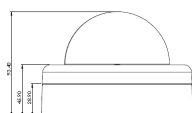
Regulatory

IP Rating..... IP66

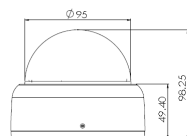
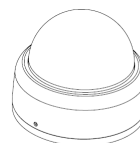
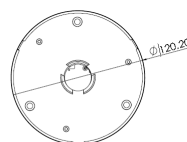
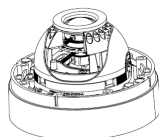
Emissions..... FCC: Part 15, Class B;
CE: EN61000, Class B

Immunity..... CE: EN50130-4

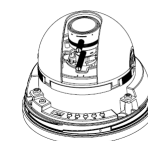
Safety..... NTSC: UL60950 and CSAC22.2 No. 60950
PAL: IEC60950



Outdoor



Indoor



Ordering Information

Brand	Camera	Series	Dome	Color	Environment	Bubble	Lens	Infrared	Format
AD	CA	75	D	W = White B = Black	I = Indoor O = Outdoor	T = Tinted C = Clear	3 = 9-22mm Varifocal 4 = 2.8-10mm Varifocal 8 = 2.5-6mm Varifocal	R ¹	N = NTSC P = PAL

(1) Outdoor only

Accessories

Model	Description
ADCDHTR	Heater Kit for Outdoor Mini-Dome

Related Products



ADTVR Series



victor

Approvals



www.americandynamics.net