

ICIP-B5000AF

5 Megapixel Indoor/Outdoor, Full-Size Bullet IR IP Camera



This sleek bullet design contains an impressive 5 Megapixel Progressive Scan Aptina CMOS sensor, capable of outputting a crisp, clear high res image. The optics are located behind the removable black snout, which conceals the 4 - 9mm vari-focal lens. This camera is IP 66 rated and highly weatherproof. This camera is fully accessible via the entire ICR software suite, and is also compatible with third party ONVIF recorders and streamers. This camera also comes equipped with an audio input for external microphones, alarm I/O's, and support for PoE power.

Features

- 4~9mm vari-focal motorized lens
- Max 12fps@5M(2560×1920)
- 25/30fps@1080P(1920×1080)
- DWDR, Day/Night(ICR), 3DNR
- Max IR 90Ft

ICIP-B5000AF

Specifications

Model	ICIP-B5000AF
Camera	
Image Sensor	1/2.5"5 Megapixel CMOS
Effective Pixels	2560(H)×1920(V)
Scanning system	Progressive
Electronic Shutter Speed	Auto/Manual, 1/3(4)~1/10000s
Min. Illumination	Color: 0.01Lux/F1.6; 0Lux/F1.6(IR on)
S/N Ratio	More than 50dB
Video Output	1 channel, BNC(1.0Vp-p/75Ω)
Camera Features	
Max IR LEDs Length	90Ft (30m)
Day/Night	Auto (ICR) / Color / B/W
Backlight Compensation	BLC / HLC / DWDR
White Balance	Auto
Gain Control	Auto / Manual
Noise Reduction	3D
Privacy Masking	Up to 4 areas
Lens	
Focal Length	4~9mm motorized
Max Aperture	F1.6
Focus Control	Auto
Angle of View	H: 82.4°(Wide)~36.1°(Tele)
Lens Type	Motorized/ Auto Iris(DC)
Mount Type	Board-in Type
Video	
Compression	H.264/MJPEG
Resolution	5M(2560×1920)/3M(2048×1536)/1080P(1920×1080) 720P(1280×720) / D1(704×576) / CIF(352×288) /
Frame Rate	Main Stream - 5M(1~12fps)/3M(1~20fps)/1080P/720P(1 ~ 25/30fps) Sub Stream - D1/CIF(1 ~ 25/30fps)
Bit Rate	H.264: 32K ~ 8192Kbps
Audio	
Compression	G.711a/ G.711u/ PCM
Interface	1/1 channel In/Out
Network	
Ethernet	RJ-45 (10/100Base-T)
Protocol	IPv4/IPv6, HTTP, HTTPS, SSL, TCP/IP, UDP, UPnP, ICMP, IGMP, SNMP, RTSP, RTP, SMTP, NTP, DHCP, DNS, PPPOE, DDNS, FTP, IP Filter, QoS, Bonjour
Compatibility	ONVIF,PSIA,CGI
Max. User Access	20 users
Smart Phone	iPhone, iPad, Android, Windows Phone
Auxiliary Interface	
Memory Slot	Micro SD, Max 64GB

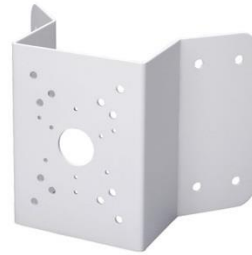
Alarm	2/1 channel In/Out
General	
Power Supply	DC12V(AC24V optional), PoE(802.3af)
Power Consumption	< 8.5W
Working Environment	-30°C ~ 60°C/-22°F ~ 140°F, Less than 95%RH
Ingress Protection	IP66
Dimensions	φ104mm×306.7mm
Weight	1.25Kg

ICIP-B5000AF

Optional Accessories



[MNT-JUNCTION BOX 1](#)



[MNT-PCNRIP](#)



[MNT-POLIP](#)

IC Realtime LLC

3050 N Andrews Avenue Extension
Pompano Beach, FL 33064
(866) 997-9009

www.icrealtime.com

Designs and specifications subject to change without notice. Copyright © 2015 IC Realtime, LLC. All rights reserved.