

## NB12-7MH



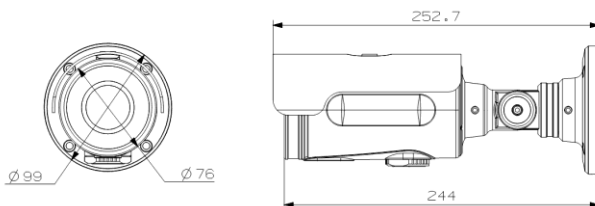
### FEATURES

- HD 60frame Bullet IP Camera
- 1/3" Progressive scan CMOS Sensor
- Dual-Codec (H.264/MJPEG)
- Progressive scan megapixel (1.3M CMOS)
- Multi profile streaming  
(5 different streams per Resolution, Frame, Rate, Codec)
- Digital PTZ, video crop
- Built-in standard PoE
- Two-way audio communication
- Dark Hunter
- Compact design & Easy installation
- Vandal proof, Weather proof (IP66)

### CNB NB12-7MH is a Dual-Codec (H.264/MJPEG)

1.3 megapixel IP camera with vandal proof housing for indoor and outdoor applications. Multiple simultaneous video streams of differentiated resolutions and frame rates will ensure highest quality service while enabling simultaneous connections through lower speed networks. Dark Hunter technology is the most optimized solution for indoor and outdoor surveillance in low-light conditions by using superior CMOS sensor with low-light sensitivity ISP sensor. Dark Hunter is especially beneficial in poor lighting environments, efficiently reducing noise and ghosting while maintain a color image without the use of IR LEDs.

### DIMENSIONS



### ACCESSORY



**Junction Box**  
(AJB201)



**Pole Mount**  
(APE101)

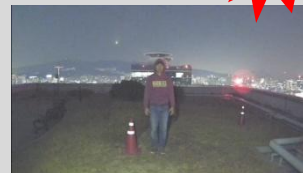


**Corner Mount**  
(ACM101)



**DC 12V Adapter**  
(AAD401)

### Dark Hunter



Dark Hunter (HD, 60fps)



IR Camera (Full HD, 30fps)

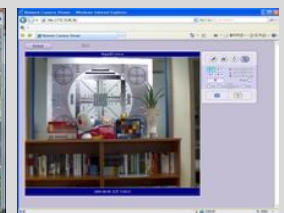


Normal Camera (Full HD, 30fps)

### Client Software



NVR2 (64ch)



Web viewer

## NBI2-7MH

| Camera                       |   |
|------------------------------|---|
| Image sensor                 | Progressive scan 1/3 inch CMOS 1.3M pixels  |
| Full resolution              | 1,280 x 720 pixels (HD)   |
| Sync System                  | Internal  |
| Lens                         | 2.8 ~ 12mm Vari-focal   |
| Day & Night                  | AUTO, DAY, NIGHT  |
| Sensitivity                  | Dark Hunter Max - 0.0005 Lux  |
| Back Light Compensation      | ON / OFF  |
| White Balance                | ATW(2,000K ~ 10,000K) / MANUAL / PUSH   |
| Exposure                     | DC / ESC  |
| WDR                          | ON / OFF  |
| 3D-DNR                       | 0 ~ 20  |
| Dark Hunter                  | AUTO ON (Max. x128) / OFF   |
| Privacy Mask                 | ON / OFF (10 Programmable Zone)   |
| Motion Detection             | ON / OFF (4 Programmable Zone)  |
| Digital Zoom                 | X1 ~ X12  |
| Mirror                       | H / V / Rotate  |
| DEFOG                        | ON / OFF  |
| OSD / Language               | BUILT IN Internally ( English...)   |
| Video                        |   |
| Compression method           | Simultaneous Dual Codec (H.264 / MJPEG)   |
| Resolution                   | 1,280 x 720@60fps   |
| Multi-Profile Streaming      | - 5 simultaneous video profiles<br>- Select the codec type, resolution and frame rates for each profile.                                |
| Intelligent Bit-Rate Control | Hybrid Bit Rate control (VBR+CBR)   |
| PTZ                          | Digital PTZ & Video crop  |
| Image Setting                | Text overlay, Privacy mask, De-interlace filter   |
| Motion detection             | 3 regions   |
| Audio                        |   |
| Mono Upstream                | 32Kbps G.726 ADPCM, 64Kbps 16bit $\mu$ -law PCM ~ MIC / Line-in   |
| Mono Downstream              | 64Kbps 16bit $\mu$ -law PCM ~ Line-out  |
| Network                      |   |
| Network Protocol             | IPv4, TCP, UDP, IGMP, ICMP, ARP, RARP, PPPoE, RTP, RTSP, SDP, HTTP, HTTPS, SMTP, FTP, DHCP, UPnP, NTP, DNS, DynDNS                      |
| Dynamic IP                   | Supported   |
| Security                     | - User ID & Password protection, IP address filtering<br>- Digest Authentication, User Access Log                                       |
| Streaming method             | - RTSP streaming with proprietary format for control informations<br>- Standard RTSP streaming<br>- HTTP streaming<br>- Onvif Profile-S |

| External Terminals                       |  |
|--|--|
| LAN                                      | 10/100BaseT LAN (auto MDIX)                                |
| Analog output                            | 1 channel D1 CVBS output of the encoding video             |
| Alarm input / output                     | Alarm I/O (1 Sensor input & 1 Relay output)                |
| Factory Reset                            | Supported  |
| Other                                    | MIC, Line in / Line out / DC 12V in                        |
| Installation                             |  |
| Standard PoE                             | IEEE802.3af Supported                                      |
| System Integration                       |  |
| Intelligent Video                        | Motion Detection   |
| Alarm Triggers                           | Motion Detection + Sensor Input + Audio Detection          |
| Alarm Events                             | Video file upload(FTP), Still Image(Email), Relay output   |
| Alarm Buffer (Audio/Video)               | configurable Pre-alarm (5~15 sec) & Post-alarm (10~60 sec) |
| Client Software                          |  |
| NVR2                                     | 64ch (free of charge)                                      |
| Smart App.                               | Android, iOS (free of charge)                              |
| Operating Environment, Power, Dimensions |  |
| Operating Temperature                    | -10°C ~ 50°C   |
| Operating Humidity                       | 8 ~ 80% RH   |
| Power                                    | DC 12V, 0.6A   |
| Dimensions (W x H x D)                   | Ø99mm x 252.7mm  |
| Weight                                   | 1.1kg  |
| Casing                                   | AL, PC, IP66   |
| Approvals                                | FCC, CE, KC  |
| Package information                      | IP camera, CD (User's guide, Software...)                  |
| Optional Items                           |  |
| Local storage                            | Micro SD card  |
| Adapter                                  | DC 12V, 1.5A   |