



The one to watch™

Product Catalog



Product Guide



Broadcast Monitors

LED-504HDMx3	15, 26
LED-803HD	11, 24
LED-803HD2	11, 24
LED-1906HDMT	8, 20
LED-1906HDMTL	8, 20
LED-1906HDMTR	8, 20
LED-2153HDSI	7, 18

Brackets and Mounts

.....	16
-------	----



CCTV Monitors

LED-502V	16, 26
LED-566HDM	15, 26
LED-803HD	11, 24
LED-803HD2	11, 24
LED-1002HD2	11, 25
LED-1003HD/HDL	10, 23
LED-1003HDX/HDLX	10, 23, 24
LED-1709HD	7, 21
LED-1709HDL/HDR	7, 21
LED-1908HD	7, 19
LED-1908HDL/HDR	7, 19
LED-2802-4KIP (w/Decoder)	5, 18
LED-3212HDT	4, 17
LED-4301-4K	4, 17
LED-5000-4K	4, 17



Digital Signage

VW-4600	3, 17
VW-5500	3, 17



Field Monitors and Kits

LED-502V	16, 26
LED-566HD	14, 25
LED-709HD	12, 25
LED-710-4KIP	15, 29



Flush Mount Monitors

LED-566HDML	15, 26
LED-711-4KL	13, 24
LED-720	25
LED-1003HDL/HDLX	10, 23, 24
LED-1562HDL/HDLX	9, 22
LED-1566HDTL	10, 21
LED-1709HDL	7, 21
LED-1906HDMTL/HDMTLX	8, 20
LED-1908HDL	7, 19



Integrated PC/Monitor

AIO-1850	8, 27
----------	-------



IP / Analog Test Monitor

LED-710-4KIP	14, 27
--------------	--------



HD and 4K Monitors

LED-502V	16, 26
LED-504HDMx3	15, 26
LED-566HD	14, 25
LED-566HDM	15, 26
LED-709HD	12, 25
LED-711-4K	12, 24
LED-711-4K2	12, 25
LED-803HD	11, 24
LED-803HD2	11, 24
LED-1002HD2	11, 23
LED-1003HD	10, 23
LED-1003HDX	10, 23
LED-1562HD	9, 22
LED-1566HDT	9, 21
LED-1709HD	7, 21
LED-1906HDMT	8, 20
LED-1908HD	7, 19
LED-1910HDVB	7, 19
LED-2153HDSI	7, 18
LED-2155HD	6, 19
LED-2364HD	6, 18
LED-2802-4KIP	5, 18
LED-3212HDT	4, 17
LED-4301-4K	4, 17
LED-5000-4K	4, 17



No Front Controls Monitors

LED-566HDMX/HDX	15, 26
LED-1003HDX/HDLX	10, 23, 24
LED-1562HDX/HDLX	9, 23, 24
LED-1906HDMTLX	8, 20



Monitors with Tuners (TVs)

LED-1566HDT/HDTL/HDTR	9, 21
LED-1906HDMT/MTR/MTL	8, 20
LED-3212HDT	4, 17



Public View Monitor

LED-1011HDPVM	10, 23
LED-1011PoEPVM	10, 23
LED-2704HDPVM	5, 18



Rack Mount Monitors

LED-504HDMx3	15, 26
LED-711-4K2	13, 25
LED-803HD2	11, 24
LED-1002HD2	11, 23
LED-1562HDR	9, 22
LED-1566HDMTR	9, 21
LED-1709HDR	7, 21
AIO-1850	8, 27
LED-1906HDMTR	8, 20
LED-1908HDR	7, 19
LED-1910HDVBR	7, 19



Sunlight Readable Monitors

LED-1910HDVB	7, 19
LED-1910HDVBR	7, 19

Touch Screen Monitors

AIO-1850	8, 27
----------	-------

Video Wall Monitors

VW-4600	3, 17
VW-5500	3, 17



Video Wall Processors

VWP-4x4	3, 27
VWP-8x8	3, 27
VWP-12x12	3, 27
VWP-16x16	3, 27

46" / 55"

Video Wall Monitors VW-4600 / VW-5500

Each commercial-grade, ultra-narrow, 1.7mm / 1.8mm (3.5mm combined) bezel video wall panel is designed for use as part of a multi-panel video wall system (i.e. 2 panels wide x 2 panels high, 4 panels wide x 4 panels high, etc.). Video wall systems are ideal for network operation centers, command centers, and in environments where multiple video sources are displayed.



- Full HD display (1080i/p) with no downscaling
- 12-bit RGB gamma correction technology
- 3D Comb Filter enhances picture quality
- HDMI, DVI, and RS-232

Specifications: [Page 17](#)

Video Wall Processor

VWP-4x4 / VWP-8x8 / VWP-12x12 / VWP-16x16

Commercial-grade, mission-critical, server-grade video wall processor is capable of displaying multiple video and graphic content sources across multiple video wall panels. For use with our video wall panels to create a robust video wall solution.



- Intel server-grade cpu
- 16GB memory, 256GB SSD storage
- Matrox Mura high performance video cards
- VuWall 2 video display management software
- Base configuration provides 4 signal inputs and 4 video outputs up to 16 inputs and 16 outputs.

Specifications: [Page 27](#)

50"/43"

LED-5000-4K / LED-4301-4K

Ultra high-definition (3840 x 2160) LCD monitor is designed for viewing 4K and HD cameras in 24/7 mission-critical environments. Ideal for use in operation centers, high volume retail locations, and in casino surveillance hubs.

- LED backlight: brighter picture using less power
- Displays native 4K content with no downscaling; ability to upscale Full HD (1920 x 1080) to full screen
- Ultra-wide viewing angle (89/89/89/89)
- ADA compliant slim design with 2.4" (59.6mm) depth
- Built-in stereo speakers
- HDMI, DVI, DisplayPort, VGA, and Composite Inputs

Specifications: [Pages 17](#)



32" TV

LED-3212HDT

Aesthetically-designed, commercial-grade, LED-backlit LCD monitor with ATSC/Clear QAM digital tuner (TV) provides exceptional picture quality using the latest DSP technology. This TV/monitor is ideal for use in any commercial AV application.

- LED backlight: brighter picture using less power
- Beautiful HDTV display with high contrast ratio and 3D Comb Filter for better picture definition
- Hotel TV Functions: default input source, default TV channel, max volume, keypad lock, auto power on, and cloning
- Wide viewing angle (89/89/89/89)
- Slim design with only 2.7" (68mm) depth
- Built-in stereo speakers

Specifications: [Page 17](#)



28"

LED-2802-4KIP

28" LED-backlit, LCD monitor displays 4K ultra-high definition (4K) resolution and provides exceptional detail. This commercial-grade model is designed for critical viewing applications.

- LED backlight: brighter picture using less power
- Ultra-high definition (3840 x 2160) resolution displays 4K content with no downscaling
- Built-in decoder and PoE (power over ethernet) for displaying an IP ONVIF (up to 4K) camera
- Wide viewing angle (85/85/85/85)
- Widescreen (16:9) native aspect ratio
- Stereo speakers with surround sound
- Removable desk stand
- HDMI, DVI, DisplayPort, VGA, and Composite Inputs

Specifications: [Page 18](#)



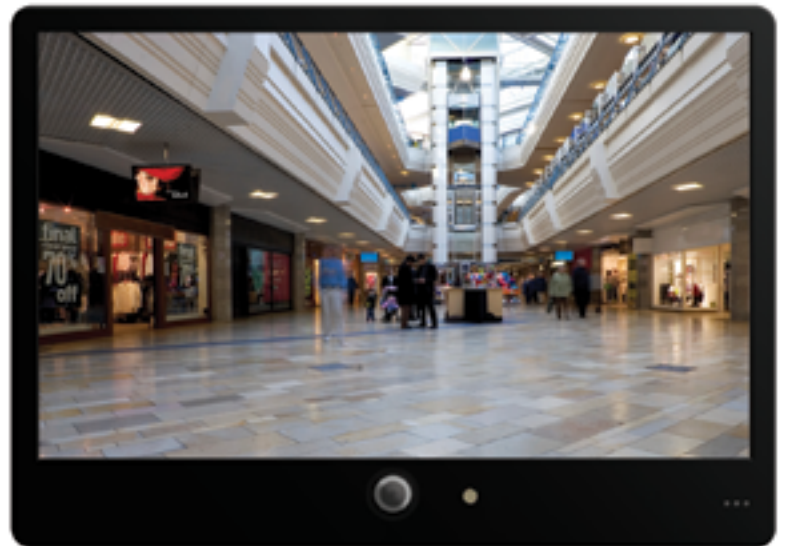
27"

LED-2704HDPVM

Commercial-grade, public view LCD monitor with built-in IP ONVIF-compliant camera provides exceptional picture quality and image storage capability for displaying multiple content.

- LED backlight: brighter picture using less power
- Displays Full HD (1920 x 1080) and 1080i/p with no downscaling
- Widest viewing angle (89/89/89/89)
- Widescreen (16:9) native aspect ratio
- ONVIF 2.2 compliant IP camera with Sony Exmor image sensor; H.264 compression
- Use with network video recording system
- Simultaneous camera output - IP and CVBS
- Body/motion sensor for auto switch capability

Specifications: [Page 18](#)



23.6"

LED-2364HD

23.6" LCD monitor features the latest technology with enhanced picture clarity and sharpness. Ideal for broadcast production and video surveillance applications.

- LED backlight: brighter picture using less power
- Full HD (1080i/p) with no downscaling
- Widescreen (16:9) native aspect ratio
- Includes removeable desk stand
- VESA pattern for wall mounting
- RS-232 control

Specifications: [Page 18](#)



21.5"

LED-2155HD

Commercial-grade, LCD monitor displays Full HD without downscaling. This all-purpose is designed for use in 24/7 environments; ideal for all video and computing environments.

- LED backlight: brighter picture using less power
- Full HD (1080i/p) with no downscaling
- Widescreen (16:9) native aspect ratio
- Wide viewing angle (85/85/85/85)
- Built-in speakers
- Removeable desk stand
- IR remote control

Specifications: [Page 18](#)



21.5"

LED-2153HDSDI

High performance LCD monitor with multiple source connections including HD-SDI features the latest technology with enhanced picture clarity and sharpness. Ideal for professional broadcast production and HD-SDI video surveillance.

- LED backlight: brighter picture using less power
- Wide viewing angle (85/85/80/80)
- 4H Comb Filter and 3D De-Interlacer
- HD-SDI Input and Output (Loop-through)
- HDMI - displays 1080i/p digital video
- 100mm pattern and keyholes for wall-mount
- Durable metal case
- 16:9 native aspect ratio

Specifications: Page 18



19"/17"

LED-1908HD / HDL / HDR LED-1709HD / HDL / HDR LED-1910HDVB / HDVBR

Industrial, workhorse LCD monitor series features the latest technology with enhanced picture clarity and sharpness for both analog and digital video signals.

- LED backlight: brighter picture using less power
- HDMI - displays 1080i/p digital video
- Composite BNC Input/Output for looping
- 3D comb filter for better picture quality
- 100mm pattern and keyholes for wall-mounting
- Durable metal case
- LED-1910HDVB has 1,000 Nit high brightness for clear viewing in direct sunlight areas

Specifications: Page 18-21



LED-1908HD
LED-1910HDVB
LED-1709HD



LED-1908HDL
LED-1709HDL



LED-1908HDR
LED-1910HDVBR
LED-1709HDR

19" TV

LED-1906HDMT / HDMTR / HDMTL / HDMTLX

High-definition, mid-size LCD TV/monitor housed in a durable metal case with a front control membrane switch. Built for active use in public spaces, this monitor is versatile and effective for any commercial video use.

- Displays HD signals (1080i/p)
- HDMI, VGA, Component/Composite Inputs
- ATSC/Clear QAM digital TV tuner
- Durable metal case
- Built-in speakers
- 75mm pattern for mounting
- Flush and Rack mount versions are available
- IR remote control



Specifications: [Page 20](#)

18.5"

AIO-1850

Industrial-grade, fully integrated PC inside an LCD monitor with 2-point touch screen housed in a vibration-resistant metal case. Designed for ongoing 24/7 use, the AIO-1850 provides optimal performance in a space-saving and efficient design.

- LED backlight: brighter picture using less power
- Built-in Intel Core i5 PC, 8GB RAM, and 128GB SSD
- Touch type: IR 2-point touch
- Displays HD signal (1080p)
- Durable black steel and aluminum case
- Built-in speakers
- 3D adaptive comb filter for better picture quality
- Wide viewing angle (89/89/89/89)
- WiFi (802.11b/g/n) and RJ-45 port for LAN connectivity
- Removable rack-mount sides



Specifications: [Page 27](#)

15" TV

LED-1566HDT / HDTL / HDTR

Full-HD resolution, mid-size monitor with built-in digital TV tuner is ideal for any commercial video use that requires an optimal quality image.

- HDMI, VGA, Composite Inputs
- ATSC/Clear QAM digital TV tuner
- 1920 x 1080 Full-HD resolution with no downscaling
- Durable ABS Plastic case
- Built-in speakers
- Built-in removable desk stand
- 75mm pattern for mounting
- IR remote control

Specifications: [Page 21](#)



LED-1566HDT



LED-1566HDTL



LED-1566HDTR

15"

LED-1562HD / HDL / HDR LED-1562HDX / HDLX

Industrial LCD monitor with RS-232 control and full-HD (1920 x 1080) resolution is ideal for optimal image quality requirements in a 24/7 environment. Multiple mounts and options with and without front controls are available.

- Anti-glare coating
- Full HD (displays 1080i/p) with no downscaling
- HDMI Inputs; Composite Input/Output
- RS-232 Control
- Removable desk stand
- IR remote control
- Built-in speakers
- Durable Metal case

Specifications: [Page 22](#)



LED-1562HD
LED-1562HDX



LED-1562HDL
LED-1562HDLX



LED-1562HDR

10.1"

LED-1011HDPVM / LED-1011PoEPVM

Aesthetically designed LCD monitor with a built-in low profile IP camera for displaying and capturing activity in front of the monitor. This model is an ideal small screen loss prevention device.

- Built-in IP camera with auto and manual electronic shutter
- 16:9 native aspect ratio
- Wide viewing angle (80/80/80/80)
- Durable metal case
- Motion sensor for auto switch control
- Connection ports are secured
- LED-1011PoEPVM option receives its 'power over ethernet'

Specifications: [Page 23](#)



9.7"

LED-1003HD / HDX / HDL / HDLX

Commercial-grade monitor series featuring the latest screen imaging technology for displaying high resolution video and graphic images. Multiple mount versions are available with and without front control options.

- Fast 2 millisecond response time
- LED backlight provides better color, longer-life
- Wide viewing angle (89/89/89/89)
- Multiple connections including 2x HDMI, VGA, and BNC composite Input/Output for looping
- Image enhancing: 3D interlace comb filter, DNR, and 4H filter
- Durable metal case
- HDX and HDXL versions have no front controls

Specifications: [Page 23-24](#)



9.7"

LED-1002HD2

Dual rack-mount monitor featuring the latest screen imaging technology for enhanced clarity and sharpness for both analog and digital video. This monitor is an industry standard in mission-critical environments and correctional institutions.

- Displays HD signals (1080i/p)
- LED backlight for better color, longer-life, and lower power
- Wide viewing angle (89/89/89/89)
- Multiple connections including x2 HDMI, VGA, and BNC composite Input / Output for looping
- Excellent 1,000:1 static contrast ratio
- Image enhancing: 3D Interlace comb filter, DNR, 4H filter
- Durable metal case

Specifications: [Page 23](#)



8"

LED-803HD / HD2

Small screen monitor is one of our most adaptable models for use in security surveillance and corporate AV environments where space constraints and portability are a factor.

- Instant-on capability when power is applied
- LED backlight – brighter picture using less power
- IR remote control
- Built-in speakers
- Multiple connections including HDMI, VGA, RS-232, and composite
- Sturdy metal case
- Anti-glare coating provides enhanced display

Specifications: [Page 24](#)



7"

LED-709HD

Versatile, high-definition, LED-backlit monitor is designed primarily for field testing, video production and remote surveillance applications. Multiple mounting options and battery pack options are available.

- LED backlight: brighter picture using less power
- Displays HD signals (1080i/p and 720p)
- 16:9 native aspect ratio
- IR remote control
- Kit available with tote bag and rechargeable battery pack

Specifications: [Page 25](#)



7"

LED-711-4K

7" monitor with native 1920 x 1200 resolution is capable of displaying 4K/UHD imagery. This monitor is designed for broadcast, medical, and pro photography/video applications.

- LED backlight: brighter picture using less power
- Displays up to 4K resolution (2160p)
- Ultra wide viewing angle (89/89/89/89)
- Multiple software features including Safe Area, Under Scan / Over Scan, Ratio, DSLR Mode, Freeze, Flip (U/D/R/L), and Noise Reduction, and Zoom
- Optional Sony NP-F970 and Canon LPE6 battery plate brackets are available for powering this monitor in the field
- Kit available with tote bag and rechargeable battery pack

Specifications: [Page 24](#)



7"

LED-711-4KL

7" flush-mount monitor with native 1920 x 1200 resolution is capable of displaying 4K/UHD imagery. This monitor is professional exhibition and other in-wall applications.

- LED backlight: brighter picture using less power
- Displays up to 4K resolution (2160p)
- Ultra wide viewing angle (89/89/89/89)
- Multiple software features including Peaking Filter (monochrome), Check Field (B/W/R/G/B), Center Mark, Safe Area, Under Scan / Over Scan, Ratio, DSLR Mode, Freeze, Flip (U/D/R/L), Noise Reduction, and Zoom (1.4x - 10x)

[Specifications: Page 24](#)



7"

LED-711-4K2

Dual rack-mount monitors with native 1920 x 1200 resolution is capable of displaying 4K resolution imagery.

- LED backlight: brighter picture using less power
- Displays up to 4K resolution (2160p)
- 16:9 native aspect ratio
- Ultra wide viewing angle (89/89/89/89)
- Multiple software features including Peaking Filter (monochrome), Check Field (B/W/R/G/B), Center Mark, Safe Area, Under Scan / Over Scan, Ratio, DSLR Mode, Freeze, Flip (U/D/R/L), Noise Reduction, and Zoom (1.4x - 10x)

[Specifications: Page 25](#)



7"

LED-710-4KIP / LED-715-4KIP

Commercial-grade 7" multi-function camera test monitor designed for installation and maintenance of both IP and analog cameras including TVI, CVI, AHD, SDI, and 4K formats. Many features including wireless capability, PoE+, and built-in PTZ controller for ONVIF IP and analog PTZ control. An indispensable tool for the video installation professional.

- Android-based 1.2GHz quad-core processor
- Includes 8GB SD card for storage
- Supports H.264 and H.265 protocol; 4K video can be displayed via mainstream feed
- Built-in rechargeable battery provides 10 hours of power depending on workload
- Built-in Wi-Fi and LAN connectivity
- Optional Tote bag is available

Specifications: [Page 27](#)



5.6"

LED-566HD

Durable field monitor with audio primarily for testing and monitoring video.

- Switchable 4:3 and 16:9 aspect ratios
- LED backlight provides better color saturation
- BNC IN/OUT jacks located on top for easy access
- HDMI Input, displays up to 1080i/p
- On-board memory retains last input source when power is Off
- Durable ABS plastic housing
- Automatic scaling of signal resolution
- Snap-on battery back included
- Batteries provide 6 hours of remote operation
- Kit version available includes monitor, tote bag, and AC adaptor

Specifications: [Page 25](#)



LED-566HD KIT

5.6"

LED-566HDM / HDMX / HDML / HDMLX

5.6" LCD monitor supports analog and digital signals with the ability to display up to high definition (1080i/p). For use in point-of-sale, surveillance, and commercial applications that require a quality small screen monitor.

- Switchable 4:3 and 16:9 aspect ratios
- Sturdy metal housing
- DSLR Scaling when connected to a still photography camera
- On-board memory retains last input source when power is Off
- Automatic scaling of signal resolution
- Excellent electromagnetic shielding

Specifications: [Page 26](#)



LED-566HDML
LED-566HDMX

5"

LED-504HDMx3

Triple 5.6" rack-mount monitors featuring enhanced screen imaging technology for clarity and sharpness.

- Switchable 4:3 and 16:9 aspect ratios
- LED backlight: brighter picture using less power
- Durable metal housing
- Automatic scaling of signal resolution
- On-board memory retains last input source when power is Off
- Excellent electromagnetic shielding
- DSLR Scaling when connected to a still photography camera

Specifications: [Page 26](#)



5"

LED-502V

Commercial-grade LCD monitor is designed to display analog signals in the field and is ideal for video testing and remote control monitoring wherever a small screen, ruggedized video monitor is required.

- Connections include Composite and VGA inputs
- Durable ABS plastic housing
- Mirror image capability
- Auto On with power capability
- On-board memory retains last power input when power is Off
- Kit available with tote bag and rechargeable battery pack



Specifications: Page 28

AC-1000



DC-12D



TB-565



MB-1



WM-302



Power Supplies

- AC-1000 12VDC, 500mA power supply (A/C adaptor) for LCD-410/411/ 703HD/703HDA/703HDV
- AC-3000 12VDC, 2A power supply
- AC-5000 12VDC, 5A switching power supply
- DC-12D 12VDC dual output car cord for LCDs less than 10", 3A
- DC-1500 12VDC car cord

Battery Packs

- BP-563C Rechargeable 2200mAH battery pack
- BH-566 Battery back for LED-566HD, LED-502V
- BP-711-970 Sony Battery mount for LED-711-4K
- BP-711-LPE6 Cannon Battery mount for LED-711-4K

SunShields and Tote Bags

- TB-565 Tote bag w/ sunshield for LED-502V and LED-566HD
- TB-703 Tote bag w/ sunshield for LCD-709HD
- TB-700 Tote bag w/sunshield for LED-710-4KIP
- TB-1001 Tote bag w/ sunshield for MD-1001

Cables

- LCD-___CBL BNC/RCA cables. Order by model number

Mounting Products and Accessories

- CT-55 4 wheel utility cart for adding portability for 32" to 70" monitors
- MB-1 ABS UNC 1/4-20 desk stand for LED-502V/566HD/711/803
- MB-2 ABS desk stand for LED-803HD
- MB-72M Metal mounting bracket for unit with 1/4-20 mounting pad
- PLT-75-100 75 - 100mm VESA conversion plate
- WM-1 Wall mount bracket for 4" to 8.4" LCDs
- WM-32 Fixed VESA compliant wall mount bracket, 40 lb. limit
- WM-302 4-way VESA wall mount with swing arm, 22 lb. limit
- WM-3270AR 4-way wall mount for 32" to 70" monitors, 90 lb. limit
- WM-3742 Fixed wall mount for LED-4207UHD4K
- WMC-2343 Ceiling mount for 23"~46" with 100x100mm pattern
- WMC-2346 Ceiling mount for 23"~46" with 200x200mm pattern
- TVDS-VW765-LAND Full-featured wall mount for video wall panel

55"



50"



46"



43"



32" TV



Model	VW-5500	LED-5000-4K	VW-4600	LED-4301-4K	LED-3212HDT
Mount	Video Wall Frame	Wall: VESA 200 x 200 mm and 200 x 400mm; Removable Desk Stand	Video Wall Frame	Wall: VESA 200 x 200 mm and 200 x 400mm; Removable Desk Stand	Wall: VESA 200 x 100 mm Includes removable Desk Stand
HD Compatible	Yes	Yes - UHD	Yes	Yes - UHD	Yes
Anti Glare Coating	Yes	Yes	Yes	Yes	Yes
V Chip/Closed Caption	N/A	N/A	N/A	N/A	Yes
Case	Durable Metal; 3.5mm Combined Bezel	Durable Metal	Durable Metal; 3.5mm Combined Bezel	Durable Metal	Durable ABS Plastic
Built-in Power Supply	Yes	Yes	Yes	Yes	Yes
IR Remote Control	Yes	Yes	Yes	Yes	Yes
Native Aspect Ratio	16:9	16:9	16:9	16:9	16:9
Visible Screen Size (WH)	47.6" x 26.8" / 1209.6 x 680.4mm	43.1 x 24.3 in. / 1095.8 x 616.4mm	40.1" x 22.54" / 1018.1 x 572.7mm	37.5" x 21" / 951.9 x 535.46mm	27.6" x 15.5" / 702 x 394mm
Resolution	1920 x 1080 (Full HD)	3840 x 2160 (Ultra HD)	1920 x 1080 (Full HD)	3840 x 2160 (Ultra HD)	1366 x 768 (displays 1080i/p)
Brightness Rating	500 cd/m ² (Nit)	400 cd/m ² (Nit)	450 cd/m ² (Nit)	350 cd/m ² (Nit)	280 cd/m ² (Nit)
Contrast Ratio	1400:1	4000:1	3500:1	1000:1	1200:1
Back Light	LED (50K)	LED (30K)	LED (50K)	LED (30K)	LED (30K)
PC Compatibility	Yes	Yes	Yes	Yes	Yes
Dot Pitch		0.2865 x 0.2865mm		0.2451 x 0.2451mm	0.1703(H) x 0.5108(V)mm
Color Depth	16.7 million	1.073 billion	16.7 million	1.073 billion	16.7 million
Response Time	8ms (Rising/Falling)	8ms (Rising/Falling)	8ms (Rising/Falling)	8ms (Rising/Falling)	8ms (Rising/Falling)
Audio Power / Speakers	No	2 Speakers x 5 Watts	No	2 Speakers x 5 Watts	2 Speakers x 8 Watts
Viewing Angle (L/R/T/B)	89/89/89/89 degrees	88/88/88/88 degrees	89/89/89/89 degrees	89/89/89/89 degrees	89/89/89/89 degrees
Digital Signal Processing	3D Comb Filter	3D Comb Filter, 3D noise reduction, and de-interlacing	3D Comb Filter	3D Comb Filter, 3D noise reduction, and de-interlacing	3D Comb Filter
Removable Desk Stand	N/A	Yes	N/A	Yes	Yes
Dimensions w/ Desk Stand	N/A	45.17" x 26.65" x 7.6" / 1147 x 677 x 197mm	N/A	39" x 25" x 7.6" / 990.8 x 635.7 x 197mm	29.1" x 19.4" x 9.8" / 739 x 492 x 250mm
Dimensions w/o Desk Stand	47.9" x 26.9" x 4.8" / 1216.7 x 683.3 x 121.9mm	45.17" x 26.26" x 2.5" / 1147 x 667 x 63mm	40.2" x 22.7" x 6.1" / 1021.98 x 576.6 x 155mm	39" x 22.8" x 2.5" / 990.8 x 580.2 x 63.1mm	29.1" x 19.4" x 2.7" / 739 x 492 x 68mm
Operating Temp/Humidity	32° ~ 140°F / 0° ~ 60°C 10% ~ 90% humidity	32-104° F / 0 - 40° C 5% ~ 95% humidity	32° ~ 140°F / 0° ~ 60°C 10% ~ 90% humidity	32-104° F / 0 - 40° C 5% ~ 95% humidity	41 ~ 104°F / 5 ~ 40°C 10% ~ 85% humidity
Power Requirements	100 ~ 240 VAC; 50/60 Hz	x1 AC Input; 110 -240V AC	100 ~ 240 VAC; 50/60 Hz	110 -240 VAC; 50/60 Hz	100 ~ 240 VAC; 50/60 Hz
Power Consumption	<300 Watts (Active); <1 Watt (Stand-by)	130 Watts (Max)	200 Watts	47 Watts (Max)	55 Watts (Max); 0.5 Watts (Stand-by)
Digital ATSC/QAM TV Tuner	No	No	No	No	Yes
HDMI / DVI / DisplayPort / RS-232	x1 / x2 / No / x1 RJ45	x1 / x1 / x1 / No	x1 / x2 / No / x1 RJ45	x1 / x1 / x1 / No	x3 / No / No / No
VGA	x1 15-pin D-sub Input	x1 RGB 15-pin D-sub Input	x1 15-pin D-sub Input	x1 RGB 15-pin D-sub Input	x1 RGB 15-pin D-sub Input
Composite	x1 BNC Input; x1 BNC Ouput	x1 RCA Input	x1 BNC Input; x1 BNC Ouput	x1 RCA Input	x2 RCA Inputs; x1 RCA Output
Component	No	No	No	No	x3 RCA YPbPr Inputs
Audio	x1 R/L Input / Output	x1 RCA L/R Input	x1 R/L Input / Output	x1 RCA L/R Input	x2 3.5mm Input; x1 RCA L/R Output; x1 3.5mm Output
Power	x1 AC Input		x1 AC Input	x1 AC Input	x1 AC Input
Weight	Net: 79.4lbs / 36 kg Gross: 90.4 lbs / 41 kg	77 lbs / 35 Kg	Net: 48.5 lbs / 22 kg; Gross: 59.5 lbs / 27 kg	Net: 49.6 lbs / 22.5 kg	Net: 15.4 lbs / 7 kg; Gross: 19.8 lbs / 9 kg

Additional Information

28"



27"



23"



21.5"



21.5"



Model	LED-2802-4KIP	LED-2704HDPVM	LED-2364HD	LED-2155HD	LED-2153HDSDI
Mount	Wall: VESA 200 x 200 mm Includes removable Desk Stand	VESA 100 x 100mm	Wall: VESA 100 x 100mm Includes removable Desk Stand	Wall: VESA 100 x 100mm Includes removable Desk Stand	Wall: VESA 100 x 100mm Desk Stand included
HD Compatible	Yes	Yes	Yes	Yes	Yes
Anti Glare Coating	Yes	Yes	Yes	Yes	Yes
V Chip/Closed Caption	N/A	N/A	N/A	N/A	N/A
Case	Durable ABS Plastic	Durable Metal, Acrylic Front Face	Durable ABS Plastic	Durable ABS Plastic	Durable Metal
Built-in Power Supply	Yes	No	No	No	No
IR Remote Control	Yes	Yes	Yes	No	Yes
Native Aspect Ratio	16:9	16:9	16:9	16:9	16:9
Visible Screen Size (WH)	24.6" x 13.6" / 623.9 x 344.5mm	23.53" x 13.23" / 597.6 x 336mm	20.5" x 11.54" / 521.28 x 293.2mm	18.03" x 10.14" / 457.9 x 257.6mm	18.76" x 10.5" / 476.6 x 268.1mm
Resolution	3840 x 2160 Ultra HD	1920 x 1080 (Full HD)	1920 x 1080 (Full HD)	1920 x 1080 (Full HD)	1920 x 1080 (Full HD)
Brightness Rating	300 cd/m ²	350 cd/m ²	250 cd/m ²	250 cd/m ²	250 cd/m ²
Contrast Ratio	1000:1	3000:1	3000:1	1000:1	1,000:1
Back Light	LED (30K)	LED (30K)	LED	LED	LED (50K)
PC Compatibility	Yes	Yes	Yes	Yes	Yes
Dot Pitch	00.16(H) x 0.16(V)mm	0.3(H) x 0.3(V) mm	0.2715(H) x 0.2715(V)mm	0.248 x 0.248mm	0.24825(H) x 0.24825(V)mm
Color Depth	1.073 billion	16.7 million	16.7 million	16.7 million	16.7 million
Response Time	5ms/5ms (Rising/Falling)	5ms (Rising/Falling)	5ms (Rising/Falling)	5ms (Rising/Falling)	3.8ms/1.2ms (Rising/Falling)
Audio Power / Speakers	8 Ohm, 2 Speakers x 5 Watts	8 Ohm, 2 Speakers x 2 Watts	2 Speakers x 2.5 Watts	2 Speakers at 5 Watts	2 Speakers x 1.5 Watts
Viewing Angle (L/R/T/B)	85/85/85/85 degrees	89/89/89/89 degrees	85/85/85/85 degrees	85/85/85/85 degrees	85/85/80/80 degrees
Digital Signal Processing		3D Comb Filter; 3D De-Interlace	3D Comb Filter	3D Comb Filter	3D Comb Filter
Removable Desk Stand	Yes	N/A	Yes	Yes	Yes
Dimensions w/ Deskstand	26.4" x 17.6" x 7.8" / 671 x 447 x 197.5mm	N/A		19.4" x 14.4" x 6.4" / 491.6 x 365.4 x 163.7mm	20.1" x 12.2" x 2.8" / 510 x 310 x 70mm
Dimensions w/o Deskstand	26.4" x 15.4" x 2.4" / 671 x 391.5 x 60.4mm	25.1" x 17.65" x 2.76" / 637.5 x 448.3 x 70.1mm	22.6" x 14" x 1.8" / 573.3 x 355.2 x 46.7mm	19.4" x 11.9" x 2.1" / 491.6 x 301.1 x 53.5mm	20.1" x 12.2" x 2.4" / 510 x 310 x 60mm
Operating Temp/Humidity	-4 ~ 122°F / -20 ~ 50°C 20% ~ 70% humidity	32 ~ 122°F / 0 ~ 50°C	32 ~ 104°F / 0 ~ 40°C 10% ~ 90%	32 ~ 104°F / 0 ~ 40°C	32 ~ 104°F / 0 ~ 40°C 10% ~ 90% humidity
Power Requirements	100 ~ 220 VAC; 50/60 Hz	100 ~ 240 VAC; 75Hz	100 ~ 240 VAC; 50/60Hz; 12VDC / 3.3A; AC adapter included	100 ~ 240 VAC; 50/60Hz	100 ~ 240 VAC; 50/60 Hz; 12VDC / 3.3A; AC adapter included
Power Consumption	<40 Watts	<50 Watts	<35 Watts (Active); 0.5 Watts (Stand-by)	< 25 Watt (Active); < 0.5 Watt (Stand-by)	30 Watts (Active); < 3 Watts (Stand-by)
Digital ATSC/QAM TV Tuner	N/A	N/A	N/A	N/A	N/A
HDMI / DVI / DisplayPort / RS-232	x1 / x1 / x1 / No	x1 / x1 / No / No	x2 / No / No / x1 Input, x1 Output (Loop-through)	x1 / No / No / No	x1 / No / No / No
VGA	x1 15-pin D-sub Input	x1 RGB 15-pin D-sub	x1 15-pin mini D-sub Input	x1 15-pin D-sub Input	x1 15-pin D-sub Input
Composite	x1 RCA Video Input	x1 BNC Input; x1 BNC Output	x2 BNC Inputs; x2 BNC Outputs	x1 BNC Input; x1 BNC Output	x1 BNC Input; x1 Output
Component	No	No	No	No	No
S-Video	No	No	No	No	x1 Input
Audio	x1 3.5mm Input	x1 3.5mm PC Input; x1 RCA L/R Input	x2 Inputs	x1 3.5mm Input; x1 3.5mm Output	x1 RCA L/R Input; x1 PC Input
Power	x1 AC Input	x1 24VDC Input	x1 DC12V Input	x1 12VDC Input	x1 2.1mm DC Input
Weight	Net: 41 lbs / 18.6 kg	Net: 14.6 lbs / 6.6 kg Gross: 16.1 lbs / 7.3 kg	Net: 9.04 lbs / 4.1 kg; Gross: 12.57 lbs / 5.7 kg	Net: 8.38 lbs / 3.8 kg	Net: 12.95 lbs / 5.9 kg
Additional Information	Built-in hardware decoder with embedded Linux system provides streaming of an IP ONVIF- compliant camera; includes PoE+ 802.3at to power IP PoE camera	ONVIF 2.2 IP Camera: 1/2.8" SONY® Exmore; Res: 1920x1080@25fps; 0.1 Lux(C), 0.01 Lux (B/W); H.264MJPEG; Vari-focal; x1 SD port; x1RJ45	x1 SD Card port; x1 USB2.0 port		x1 HD-SDI Input / Output

19"

19"

19"

19"

19"



Model	LED-1910HDVB	LED-1910HDVBR	LED-1908HD	LED-1908HDL	LED-1908HDR
Mount	Wall: VESA 100mm X 100mm	Rack Mount: 9RU	Wall: VESA 100 x 100mm Desk Stand easel included	Flush Mount	Rack Mount: 9RU
HD Compatible	Yes	Yes	Yes	Yes	Yes
Anti Glare Coating	Yes	Yes	Yes	Yes	Yes
V Chip/Closed Caption	N/A	N/A	N/A	N/A	N/A
Case	Durable Metal	Durable Metal	Durable Metal	Durable Metal	Durable Metal
Built-in Power Supply	No	No	No	No	No
IR Remote Control	Yes	Yes	No	No	No
Native Aspect Ratio	5:4	5:4	5:4; displays 16:9 (true 4:3 option available)	5:4; displays 16:9 (true 4:3 option available)	5:4; displays 16:9 (true 4:3 option available)
Visible Screen Size (WH)	14.81" x 11.85" / 376.3 x 301.1mm	14.8" x 11.8" / 376.3 x 301mm	14.8" x 11.8" / 376.3 x 301mm	14.8" x 11.8" / 376.3 x 301mm	14.8" x 11.8" / 376.3 x 301mm
Resolution	1280 x 1024 (displays 1080i/p)	1280 x 1024 (displays 1080i/p)	1280 x 1024 (displays 1080i/p)	1280 x 1024 (displays 1080i/p)	1280 x 1024 (displays 1080i/p)
Brightness Rating	1000 cd/m ²	1000 cd/m ²	250 cd/m ²	250 cd/m ²	250 cd/m ²
Contrast Ratio	1,000:1	1,000:1	1,000:1	1,000:1	1,000:1
Back Light	LED (30K)	LED (30K)	LED (30K)	LED (30K)	LED (30K)
PC Compatibility	Yes	Yes	Yes	Yes	Yes
Dot Pitch	0.294(H) x 0.294(V)mm	0.294(H) x 0.294(V)mm	0.294(H) x 0.294(V)mm	0.294(H) x 0.294(V)mm	0.294(H) x 0.294(V)mm
Color Depth	16.7 million	16.7 million	16.7 million	16.7 million	16.7 million
Response Time	5ms (Rising/Falling)	5ms (Rising/Falling)	5ms (Rising/Falling)	5ms (Rising/Falling)	5ms (Rising/Falling)
Audio Power / Speakers	2 Speakers x 2.5 Watts	2 Speakers x 2.5 Watts	2 Speakers x 1.5 Watts	2 Speakers x 1.5 Watts	2 Speakers x 1.5 Watts
Viewing Angle (L/R/T/B)	85/85/80/80 degrees	85/85/80/80 degrees	85/85/80/80 degrees	85/85/80/80 degrees	85/85/80/80 degrees
Digital Signal Processing	3D Comb Filter and noise reduction	3D Comb Filter and noise reduction	3D Comb Filter	3D Comb Filter	3D Comb Filter
Removable Desk Stand	N/A	N/A	Yes (easel)	N/A	N/A
Dimensions w/ Deskstand	N/A	N/A	N/A	N/A	N/A
Dimensions w/o Deskstand	15.96" x 13.05" x 1.9" / 405.4 x 331.4 x 48.3mm	9RU x 1.9"	16.4" x 14.5" x 2.9" / 415.5 x 366.7 x 72mm	17.5" x 10.4" x 2.1" / 443 x 264 x 52mm	9RU x 2.9"
Operating Temp/Humidity	32 ~ 122°F / 0 ~ 50°C 5% ~ 90% humidity	32 ~ 122°F / 0 ~ 50°C 5% ~ 90% humidity	32 ~ 104°F / 0 ~ 40°C 10% ~ 90% humidity	32 ~ 104°F / 0 ~ 40°C 10% ~ 90% humidity	32 ~ 104°F / 0 ~ 40°C 10% ~ 90% humidity
Power Requirements	12 VDC (Includes ext. AC adapter)	12 VDC (Includes ext. AC adapter)	DC 12V (AC100~240)[50/60]	DC 12V (AC100~240)[50/60]	DC 12V (AC100~240)[50/60]
Power Consumption	<20 Watts (Max)	<20 Watts (Max)	15 Watts (Max)	15 Watts (Max)	15 Watts (Max)
Digital ATSC/QAM TV Tuner	N/A	N/A	N/A	N/A	N/A
HDMI / DVI / DisplayPort / RS-232	x1 / No / No / No	x1 / No / No / No	x2 / No / No / No	x2 / No / No / No	x1 / No / No / No
VGA	x1 15-pin D-sub Input	x1 15-pin D-sub Input	x1 15-pin D-sub Input	x1 15-pin D-sub Input	x1 15-pin D-sub Input
Composite	x2 BNC Inputs; x2 BNC Outputs	x2 BNC Inputs; x2 BNC Outputs	x1 BNC Input; x1 Output	x1 BNC Input; x1 Output	x1 BNC Input; x1 Output
Component	No	No	No	No	No
S-Video	x1 Input	x1 Input	No	No	No
Audio	x2 Inputs	x2 Inputs	x1 L/R RCA Input; x1 3.5mm PC stereo Input	x1 L/R RCA Input; x1 3.5mm PC stereo Input	x1 L/R RCA Input; x1 3.5mm PC stereo Input
Power	x1 2.1mm DC Input	x1 2.1mm DC Input	x1 2.1mm DC Input	x1 2.1mm DC Input	x1 2.1mm DC Input
Weight	Net: 3.97 lbs / 1.8 kg; Gross: 15.65 lbs / 7.1 kg	Net: 3.97 lbs / 1.8 kg; Gross: 15.65 lbs / 7.1 kg	Net: 10.2 lbs / 4.7 kg; Gross: 15.7 lbs / 7.1 kg	Net: 11.8 lbs / 5.4 kg Gross: 17.3 lbs / 7.9 kg	Net: 12.43 lbs / 5.65 kg Gross: 17.35 lbs / 7.9 kg
Additional Information					

19" TV



19" TV



19" TV



19" TV



17"



Model	LED-1906HDMT	LED-1906HDMTL	LED-1906HDMTLX	LED-1906HDMTR	LED-1709HD
Mount	Wall: VESA 75 x 75mm	Flush Mount	Flush Mount	Rack Mount: 7RU	Wall: VESA 100mm X 100mm Desk Stand easel included
HD Compatible	Yes	Yes	Yes	Yes	Yes
Anti Glare Coating	Yes	Yes	Yes	Yes	Yes
V Chip/Closed Caption	Yes	Yes	Yes	Yes	N/A
Case	Durable Metal	Durable Metal	Durable Metal	Durable Metal	Durable Metal
Built-in Power Supply	Yes	Yes	Yes	Yes	No
IR Remote Control	Yes	Yes	Yes	Yes	No
Native Aspect Ratio	16:9	16:9	16:9	16:9	5:4; displays 16:9 (true 4:3 option available)
Visible Screen Size (WH)	16.1" x 9.1" / 409.8 x 230.4mm	16.1" x 9.1" / 409.8 x 230.4mm	16.1" x 9.1" / 409.8 x 230.4mm	16.1" x 9.1" / 409.8 x 230.4mm	13.4" x 10.7" / 340 x 272mm
Resolution	1366 x 768 (displays 1080i/p)	1366 x 768 (displays 1080i/p)	1366 x 768 (displays 1080i/p)	1366 x 768 (displays 1080i/p)	1280 x 1024 (displays 1080i/p)
Brightness Rating	250 cd/m ²	250 cd/m ²	250 cd/m ²	250 cd/m ²	250 cd/m ²
Contrast Ratio	1,000:1	1,000:1	1,000:1	1,000:1	1,000:1
Back Light	LED (30K)	LED (30K)	LED (30K)	LED	LED (30K)
PC Compatibility	Yes	Yes	Yes	Yes	Yes
Dot Pitch	0.30(H) x 0.30(V)mm	0.30(H) x 0.30(V)mm	0.30(H) x 0.30(V)mm	0.30(H) x 0.30(V)mm	0.264(H) x 0.264(V)mm
Color Depth	16.7 million	16.7 million	16.7 million	16.7 million	16.7 million
Response Time	5ms (Rising/Falling)	5ms (Rising/Falling)	5ms (Rising/Falling)	5ms (Rising/Falling)	5ms (Rising/Falling)
Audio Power / Speakers	8 Ohm, 2 Speakers x 2 Watts	8 Ohm, 2 Speakers x 2 Watts	8 Ohm, 2 Speakers x 2 Watts	8 Ohm, 2 Speakers x 2 Watts	2 Speakers x 1.5 Watts
Viewing Angle (L/R/T/B)	85/85/80/80 degrees	85/85/80/80 degrees	85/85/80/80 degrees	85/85/80/80 degrees	85/85/80/80 degrees
Digital Signal Processing	3D comb filter image processing and 3D digital noise reduction	3D comb filter image processing and 3D digital noise reduction	3D comb filter image processing and 3D digital noise reduction	3D comb filter image processing and 3D digital noise reduction	3D Comb Filter
Removable Desk Stand	No	N/A	N/A	N/A	Yes (easel)
Dimensions w/ Deskstand	N/A	N/A	N/A	N/A	N/A
Dimensions w/o Deskstand	17.51" x 11.89" x 1.4" / 445 x 302 x 36mm	19.06" x 13.39" x 1.93" / 484 x 340 x 49mm	19.06" x 13.39" x 1.93" / 484 x 340 x 49mm	7RU (rack units)	14.9" x 13.1" x 2.9" / 378 x 331.5 x 72mm
Operating Temp/Humidity	6 ~ 104°F / -14 ~ 40°C 10% ~ 90% humidity	6 ~ 104°F / -14 ~ 40°C 10% ~ 90% humidity	6 ~ 104°F / -14 ~ 40°C 10% ~ 90% humidity	6 ~ 104°F / -14 ~ 40°C	32 ~ 104°F / 0 ~ 40°C 10% ~ 90% humidity
Power Requirements	100 ~ 240 VAC; 50/60Hz	100 ~ 240 VAC; 50/60Hz	100 ~ 240 VAC; 50/60Hz	100 ~ 240 VAC; 50/60Hz	DC 12V (AC100~240)[50/60]
Power Consumption	<25 Watts (Active); <= 0.5 Watts (Stand-by)	< 25 Watts (Active); < 0.5 Watts (Stand-by)	< 25 Watts (Active); < 0.5 Watts (Stand-by)	< 25 Watts (Active); < 0.5 Watts (Stand-by)	15 Watts (Max); 1.5 watts (Stand-by)
Digital ATSC/QAM TV Tuner	Yes	Yes	Yes	Yes	No
HDMI / DVI / DisplayPort / RS-232	x3 / No / No / No	x3 / No / No / No	x3 / No / No / No	x3 / No / No / No	x2 / No / No / No
VGA	x1 15-pin mini D-sub Input	x1 15-pin mini D-sub Input	x1 15-pin mini D-sub Input	x1 15-pin mini D-sub Input	x1 15-pin D-sub Input
Composite	x2 RCA Inputs; x1 RCA Output	x2 RCA Inputs; x1 RCA Output	x2 RCA Inputs; x1 RCA Output	x2 RCA Inputs; x1 RCA Output	x1 BNC Input; x1 Output
Component	x1 RCA YPbPr Input	x1 RCA YPbPr Input	x1 RCA YPbPr Input	x1 RCA YPbPr Input	No
S-Video	No	No	No	No	No
Audio	x1 RCA L/R Output; x1 3.5mm PC Input; x1 Coaxial Digital Output; x1 3.5mm earphone Output	x1 RCA L/R Output; x1 3.5mm PC Input; x1 Coaxial Digital Output; x1 3.5mm earphone Output	x1 RCA L/R Output; x1 3.5mm PC Input; x1 Coaxial Digital Output; x1 3.5mm earphone Output	x1 RCA L/R Output; x1 3.5mm PC Input; x1 Coaxial Digital Output; x1 3.5mm earphone Output	x1 L/R RCA Input; x1 3.5mm PC stereo Input
Power	x1 AC Input	x1 AC Input	x1 AC Input	x1 AC Input	x1 2.1mm DC Input
Weight	Net: 8.8 lbs / 4 kg Gross: 11 lbs / 5 kg	Net: 8.8 lbs / 4 kg Gross: 12 lbs / 5.4 kg	Net: 8.8 lbs / 4 kg Gross: 12 lbs / 5.4 kg	Net: 11.4 lbs / 5.2 kg Gross: 13.4 lbs / 6.1 kg	Net: 9.95 lbs / 4.5 kg Gross: 15.5 lbs / 7 kg
Additional Information	USB: x1 Input for f/w update only	USB: x1 Input for f/w update only	USB: x1 Input for f/w update only		

17"

17"

15.6" TV

15.6" TV

15.6" TV



Model	LED-1709HDL	LED-1709HDR	LED-1566HDT	LED-1566HDTL	LED-1566HDTR
Mount	Flush Mount	Rack Mount: 8RU	Wall: VESA 75 x 75mm Includes removable Desk Stand	Flush Mount	Rack Mount: 6RU
HD Compatible	Yes	Yes	Yes	Yes	Yes
Anti Glare Coating	Yes	Yes	Yes	Yes	Yes
V Chip/Closed Caption	N/A	N/A	Yes	Yes	Yes
Case	Durable Metal	Durable Metal	Durable ABS Plastic	Durable ABS Plastic	Durable ABS Plastic
Built-in Power Supply	No	No	No	No	No
IR Remote Control	No	No	Yes	Yes	Yes
Native Aspect Ratio	5:4; displays 16:9 (true 4:3 option available)	5:4; displays 16:9 (true 4:3 option available)	16:9	16:9	16:9
Visible Screen Size (WH)	13.4" x 10.7" / 340 x 272mm	13.4" x 10.7" / 340 x 272mm	13.6" x 7.6" / 345 x 195mm	13.6" x 7.6" / 345 x 195mm	13.6" x 7.6" / 345 x 195mm
Resolution	1280 x 1024 (displays 1080i/p)	1280 x 1024	1920 x 1080 (Full HD)	1920 x 1080 (Full HD)	1920 x 1080 (Full HD)
Brightness Rating	250 cd/m ²	250 cd/m ²	300 cd/m ²	300 cd/m ²	300 cd/m ²
Contrast Ratio	1,000:1	1,000:1	800:1	800:1	800:1
Back Light	LED (30K)	LED (30K)	LED (15K)	LED (15K)	LED (15K)
PC Compatibility	Yes	Yes	Yes	Yes	Yes
Dot Pitch	0.264(H) x 0.264(V)mm	0.264(H) x 0.264(V)mm	0.264(H) x 0.264(V)mm	0.264(H) x 0.264(V)mm	0.215(H) x 0.215(V)mm
Color Depth	16.7 million	16.7 million	16.7 million	16.7 million	16.7 million
Response Time	5ms (Rising/Falling)	5ms (Rising/Falling)	25ms (Rising/Falling)	25ms (Rising/Falling)	25ms (Rising/Falling)
Audio Power / Speakers	2 Speakers x 1.5 Watts	2 Speakers x 1.5 Watts	8 Ohm, 2 Speakers x 5 Watts	8 Ohm, 2 Speakers x 5 Watts	8 Ohm, 2 Speakers x 5 Watts
Viewing Angle (L/R/T/B)	85/85/80/80 degrees	85/85/80/80 degrees	85/85/85/85 degrees	85/85/85/85 degrees	85/85/85/85 degrees
Digital Signal Processing	3D Comb Filter	3D Comb Filter	3D Comb Filter	3D Comb Filter	3D Comb Filter
Removable Desk Stand	N/A	N/A	Yes	N/A	N/A
Dimensions w/ Deskstand			15.7" x 11.6" x 4.7" / 398.8 x 294.6 x 119.4mm	N/A	N/A
Dimensions w/o Deskstand	16.9" x 15.1" x 2.9" / 427.8 x 381.5 x 72mm	8RU x 2.9"	15.7" x 11.25" x 1.5" / 398.8 x 285.8 x 38mm	16.7" x 11.4" x 1.9" / 425 x 290 x 48mm	6 RU (rack units)
Operating Temp/Humidity	32 ~ 104°F / 0 ~ 40°C 10% ~ 90% humidity	32 ~ 104°F / 0 ~ 40°C 10% ~ 90% humidity	32 ~ 104°F / 0 ~ 40°C 10% ~ 90% humidity	32 ~ 104°F / 0 ~ 40°C 10% ~ 90% humidity	32 ~ 104°F / 0 ~ 40°C 10% ~ 90% humidity
Power Requirements	DC 12V (AC100~240)[50/60]	DC 12V (AC100~240)[50/60]	Regulated 12VDC; 3A; Negative Ground	Regulated 12VDC; 3A; Negative Ground	Regulated 12VDC; 3A; Negative Ground
Power Consumption	15 Watts	15 Watts	30 Watts (Max)	30 Watts (Max)	30 Watts (Max)
Digital ATSC/QAM TV Tuner	No	No	Yes	Yes	Yes
HDMI / DVI / DisplayPort / RS-232	x2 / No / No / No	x2 / No / No / No	x1 / No / No / No	x1 / No / No / No	x1 / No / No / No
VGA	x1 15-pin D-sub Input	x1 15-pin D-sub Input	x1 15-pin D-sub Input	x1 15-pin D-sub Input	x1 15-pin mini D-sub Input
Composite	x1 BNC Input; x1 Output	x1 BNC Input; x1 Output	x1 RCA Input	x1 RCA Input	x1 RCA Input
Component	No	No	x1 RCA (x3) Input	x1 RCA (x3) Input	x1 RCA (x3) Input
S-Video	No	No	No	No	No
Audio	x1 L/R RCA Input; x1 3.5mm PC stereo Input	x1 L/R RCA Input; x1 3.5mm PC stereo Input	x1 RCA L/R Input and Output; x1 3.5mm PC Input	x1 RCA L/R Input and Output; x1 3.5mm PC Input	x1 RCA L/R Input and Output; x1 3.5mm PC Input
Power	x1 2.1mm DC Input	x1 2.1mm DC Input	x1 2.1mm DC Input	x1 2.1mm DC Input	x1 2.1mm DC Input
Weight	Net: 11.4 lbs / 5.2 kg Gross: 18.3 lbs / 8.3 kg	Net: 11.9 lbs / 5.4 kg Gross: 17.5 lbs / 8 kg	Net: 2.6 lbs / 1.8 kg Gross: 4.9 lbs / 2.2 kg	Net: 2.6 lbs / 1.8 kg Gross: 4.9 lbs / 2.2 kg	Net: 2.6 lbs / 1.8 kg Gross: 4.9 lbs / 2.2 kg
Additional Information			USB: x1 Input	USB: x1 Input	USB: x1 Input

15.6"

15.6"

15.6"

15.6"

15.6"



Model	LED-1562HD	LED-1562HDX	LED-1562HDL	LED-1562HDLX	LED-1562HDR
Mount	Wall: VESA 75 x 75mm and 100 x 100mm; Removable Desk Stand	Wall: VESA 75 x 75mm and 100 x 100mm; No front controls	Flush Mount	Flush Mount; No front controls	Rack Mount: 6RU
HD Compatible	Yes	Yes	Yes	Yes	Yes
Anti Glare Coating	Yes	Yes	Yes	Yes	Yes
V Chip/Closed Caption	N/A	N/A	N/A	N/A	Durable Metal
Case	Durable Metal	Durable Metal	Durable Metal	Durable Metal	No
Built-in Power Supply	No	No	No	No	Yes
IR Remote Control	Yes	Yes	Yes	Yes	16:9
Native Aspect Ratio	16:9	16:9	16:9	16:9	13.6" x 7.6" / 345 x 193mm
Visible Screen Size (WH)	13.6" x 7.6" / 345 x 193mm	13.6" x 7.6" / 345 x 193mm	13.6" x 7.6" / 345 x 193mm	13.6" x 7.6" / 345 x 193mm	1920 x 1080 (Full HD)
Resolution	1920 x 1080 (Full HD)	1920 x 1080 (Full HD)	1920 x 1080 (Full HD)	1920 x 1080 (Full HD)	300 cd/m ²
Brightness Rating	300 cd/m ²	300 cd/m ²	300 cd/m ²	300 cd/m ²	600:1
Contrast Ratio	600:1	600:1	600:1	600:1	LED (30K)
Back Light	LED (30K)	LED (30K)	LED (30K)	LED (30K)	N/A
PC Compatibility	Yes	Yes	Yes	N/A	0.17925(H) x 0.17925(V)mm
Dot Pitch	0.17925(H) x 0.17925(V)mm	0.17925(H) x 0.17925(V)mm	0.17925(H) x 0.17925(V)mm	0.17925(H) x 0.17925(V)mm	6-bit, 262K
Color Depth	6-bit, 262K	6-bit, 262K	6-bit, 262K	6-bit, 262K	8ms (Rising/Falling)
Response Time	8ms (Rising/Falling)	8ms (Rising/Falling)	8ms (Rising/Falling)	8ms (Rising/Falling)	8 Ohm, 2 Speakers x 5 Watts
Audio Power / Speakers	8 Ohm, 2 Speakers x 5 Watts	8 Ohm, 2 Speakers x 5 Watts	8 Ohm, 2 Speakers x 5 Watts	8 Ohm, 2 Speakers x 5 Watts	70/70/60/60 degrees
Viewing Angle (L/R/T/B)	70/70/60/60 degrees	70/70/60/60 degrees	70/70/60/60 degrees	70/70/60/60 degrees	3D Comb Filter
Digital Signal Processing	3D Comb Filter	3D Comb Filter	3D Comb Filter	3D Comb Filter	N/A
Removable Desk Stand	Yes	N/A	N/A	N/A	N/A
Dimensions w/ Deskstand	14.25" x 10.78" x 5.5" / 362 x 275 x 140mm	14.25" x 10.78" x 5.5" / 362 x 275 x 140mm	N/A	N/A	18.98" x 10.47" x 1.85" / 482 x 266 x 47mm (6RU)
Dimensions w/o Deskstand	14.25" x 10.5" x 1.85" / 362 x 267 x 47mm	14.25" x 10.5" x 1.85" / 362 x 267 x 47mm	16.22" x 11.69" x 1.85" / 412 x 297 x 47mm	16.22" x 11.69" x 1.85" / 412 x 297 x 47mm	32 ~ 104°F / 0 ~ 40°C 10% ~ 90% humidity
Operating Temp/Humidity	32 ~ 104°F / 0 ~ 40°C 10% ~ 90% humidity	32 ~ 104°F / 0 ~ 40°C 10% ~ 90% humidity	32 ~ 104°F / 0 ~ 40°C 10% ~ 90% humidity	32 ~ 104°F / 0 ~ 40°C 10% ~ 90% humidity	Regulated 12VDC; 3A; Negative Ground
Power Requirements	Regulated 12VDC; 3A; Negative Ground	Regulated 12VDC; 3A; Negative Ground	Regulated 12VDC; 3A; Negative Ground	Regulated 12VDC; 3A; Negative Ground	8 Watts (Max)
Power Consumption	8 Watts (Max)	8 Watts (Max)	8 Watts (Max)	8 Watts (Max)	x2 / No / No / x1 Input
Digital ATSC/QAM TV Tuner	N/A	N/A	N/A	N/A	x1 15-pin mini D-sub Input
HDMI / DVI / DisplayPort / RS-232	x2 / No / No / x1 Input	x2 / No / No / x1 Input	x2 / No / No / x1 Input	x2 / No / No / x1 Input	x1 BNC Input; x1 BNC Output
VGA	x1 15-pin mini D-sub Input	x1 15-pin mini D-sub Input	x1 15-pin mini D-sub Input	x1 15-pin mini D-sub Input	No
Composite	x1 BNC Input; x1 BNC Output	x1 BNC Input; x1 BNC Output	x1 BNC Input; x1 BNC Output	x1 BNC Input; x1 BNC Output	No
Component	No	No	No	No	x1 RCA L/R Input; x1 3.5mm PC Input
S-Video	No	No	No	No	x1 2.1mm DC Input
Audio	x1 RCA L/R Input; x1 3.5mm PC Input	x1 RCA L/R Input; x1 3.5mm PC Input	x1 RCA L/R Input; x1 3.5mm PC Input	x1 RCA L/R Input; x1 3.5mm PC Input	Net: 5.6 lbs / 2.5 kg
Power	x1 2.1mm DC Input	x1 2.1mm DC Input	x1 2.1mm DC Input	x1 2.1mm DC Input	
Weight	Net: 4.85 lbs / 2.2 kg	Net: 5.9 lbs / 2.7 kg	Net: 5.6 lbs / 2.5 kg	Net: 5.9 lbs / 2.7 kg	Net: 5.9 lbs / 2.7 kg
Additional Information					

10.1"



9.7"



9.7"



9.7"



9.7"



Model	LED-1011HDPVM	LED-1002HD2	LED-1003HD	LED-1003HDX	LED-1003HDLX
Mount	VESA 75 x 75mm	Rack Mount: 5RU	Wall: VESA 75 x 75mm and 100 x 100mm	Wall: VESA 75 x 75mm and 100 x 100mm; No front controls	Flush Mount; No front controls
HD Compatible	Yes (displays 1080i/p)	Yes	Yes	Yes	Yes
Anti Glare Coating	Yes	Yes	Yes	Yes	Yes
Case	Durable Metal	Durable Metal	Durable Metal	Durable Metal	Durable Metal
Built-in Power Supply	No	No	No	No	No
IR Remote Control	Yes	No	No	Yes	Yes
Native Aspect Ratio	4:3	4:3	4:3	4:3	4:3
Visible Screen Size (WH)	8.6" x 5.4" / 218.5 x 137mm	7.8" x 5.9" / 197.6 x 148.8mm (x2)	7.8" x 5.9" / 197.6 x 148.8mm	7.8" x 5.9" / 197.6 x 148.8mm	7.8" x 5.9" / 197.6 x 148.8mm
Resolution	1280(H) x 800(V)	1024 x 768	1024 x 768	1024 x 768	1024 x 768
Brightness Rating	300 cd/m ²	400 cd/m ²	400 cd/m ²	400 cd/m ²	400 cd/m ²
Contrast Ratio	1,000:1	1,000:1	1,000:1	1,000:1	1,000:1
Back Light	LED	LED (30K)	LED (30K)	LED (30K)	LED (30K)
PC Compatibility	N/A	Yes	Yes	Yes	Yes
Dot Pitch	0.264(H) x 0.264(V)mm	0.192(H) x 0.192(V)mm	0.192(H) x 0.192(V)mm	0.192(H) x 0.192(V)mm	0.192(H) x 0.192(V)mm
Color Depth	16.7 million	262,144	262,144	262,144	262,144
Response Time	15ms (Rising/Falling)	2ms (Rising/Falling)	2ms (Rising/Falling)	2ms (Rising/Falling)	2ms (Rising/Falling)
Audio Power / Speakers		2 Speakers x 2 Watts	2 Speakers x 2 Watts	2 Speakers x 2 Watts	2 Speakers x 2 Watts
Viewing Angle (L/R/T/B)	80/80/80/80 degrees	89/89/89/89 degrees	89/89/89/89 degrees	89/89/89/89 degrees	89/89/89/89 degrees
Digital Signal Processing	3D Comb Filter and 3D De-Interlace	3D interlace & DNR, 4H filter	3D interlace & DNR, 4H filter	3D interlace & DNR, 4H filter	3D interlace & DNR, 4H filter
Removable Desk Stand	N/A	Yes	Yes	Yes	Yes
Dimensions w/ Deskstand	N/A		8.8" x 8.72" x 6.3" / 223 x 221.4 x 160mm	8.8" x 8.72" x 6.3" / 223 x 221.4 x 160mm	8.8" x 8.72" x 6.3" / 223 x 221.4 x 160mm
Dimensions w/o Deskstand	10" x 8.54" x 2" / 254 x 217 x 50mm	18.9" x 8.72" x 1.85" / 479 x 221.4 x 47mm (5RU)	8.8" x 7.8" x 1.9" / 223.5 x 198 x 48.3mm	8.8" x 8.72" x 1.85" / 223 x 221.4 x 47mm	8.8" x 8.72" x 1.85" / 223 x 221.4 x 47mm
Operating Temp/Humidity	32 ~ 122°F / 0 ~ 50°C	32 ~ 104°F / 0 ~ 40°C	32 ~ 104°F / 0 ~ 40°C	32 ~ 104°F / 0 ~ 40°C	32 ~ 104°F / 0 ~ 40°C
Power Requirements	24VDC (DC12V ~ 35V); Negative Ground	Regulated 12VDC; 2A; Negative Ground	Regulated 12VDC; 2A; Negative Ground	Regulated 12VDC; 2A; Negative Ground	Regulated 12VDC; 2A; Negative Ground
Power Consumption	18 Watts (Max)	60 Watts	30 Watts	30 Watts	30 Watts
HDMI / DVI / DisplayPort / RS-232	No / No / No / No	x2 / No / No / No (per monitor)	x1 / No / No / No	x1 / No / No / No	x1 / No / No / No
VGA	No	x1 15-pin mini D-sub Input (per monitor)	x1 15-pin mini D-sub Input	x1 15-pin mini D-sub Input	x1 15-pin mini D-sub Input
Composite	x1 CVBS Output	x1 BNC Input; x1 BNC Output (per monitor)	x1 BNC Input; x1 BNC Output	x1 BNC Input; x1 BNC Output	x1 BNC Input; x1 BNC Output
Component	No	No	No	No	No
S-Video	No	No	No	No	No
Audio		x1 RCA L/R Input (per monitor); x1 PC 3.5mm Input (per monitor)	x1 RCA L/R Input; x1 PC 3.5mm Input	x1 RCA L/R Input; x1 PC 3.5mm Input	x1 RCA L/R Input; x1 PC 3.5mm Input
Power	x1 2.1mm DC Input	x1 2.1mm DC Input	x1 2.1mm DC Input	x1 2.1mm DC Input	x1 2.1mm DC Input
Weight	Net: 4.2 lbs / 1.9 kg	Net: 6.8 lbs / 3.1 kg Gross: 8.2 lbs / 3.7 kg	Net: 2.55 lbs / 1.2 kg Gross: 4.6 lbs / 2.1 kg	Net: 2.55 lbs / 1.2 kg Gross: 4.6 lbs / 2.1 kg	Net: 2.55 lbs / 1.2 kg Gross: 4.6 lbs / 2.1 kg
Additional Information	Camera Sensor: 1/3"SONY CMOS; 3.6mm Fixed; 1080p@25fps; H.264, M-JPEG; Color: 0.1Lux, B/W: 0.01Lux; ONVIF 2.2; x1 RJ45 Output; x1 SD Slot for recording; Model LED-1011PoEPVM is same model with power over ethernet				

9.7"



8"



8"



7"



7"



Model	LED-1003HDL	LED-803HD2	LED-803HD	LED-711-4K	LED-711 4KL
Mount	Flush Mount	Rack Mount: 4RU	Wall: VESA 75 x 75mm Includes Removable Desk Stand	Wall: VESA 75 x 75mm	Flush Mount
HD Compatible	Yes	Yes	Yes	Yes (displays up to 2160p)	Yes (displays up to 2160p)
Anti Glare Coating	Yes	Yes	Yes	Yes	Yes
Case	Durable Metal	Durable Metal	Durable Metal	Durable Metal	Durable Metal
Built-in Power Supply	No	No	No	No	No
IR Remote Control	No	No	No	No	No
Native Aspect Ratio	4:3	4:3	4:3	16:9	16:9
Visible Screen Size (WH)	7.8" x 5.9" / 197.6 x 148.8mm	6.4" x 4.8" / 162.0 x 121.5mm (x2)	6.4" x 4.8" / 162.0 x 121.5mm	5.95" x 3.7" / 151.2 x 94mm	5.95" x 3.7" / 151.2 x 94mm
Resolution	1024 x 768	800 x 600 (displays 1080i/p)	800 x 600 (displays 1080i/p)	1920 x 1200; displays up to 4K (4096 x 2160p)	1920 x 1200; displays up to 4K (4096 x 2160p)
Brightness Rating	400 cd/m ²	250 cd/m ²	250 cd/m ²	450 cd/m ²	450 cd/m ²
Contrast Ratio	1,000:1	500:1	500:1	1,100:1	1,100:1
Back Light	LED (30K)	LED (20K)	LED (20K)	LED (50K)	LED (50K)
PC Compatibility	Yes	Yes	Yes	Yes	Yes
Dot Pitch	0.192(H) x 0.192(V)mm	0.0675(H) x 0.2025(V)mm	0.0675(H) x 0.2025(V)mm	0.07875(H) x 0.7875(V) mm	0.07875(H) x 0.7875(V) mm
Color Depth	262,144	16.7 million	16.7 million	16.7 million	16.7 million
Response Time	2ms (Rising/Falling)	25ms (Rising/Falling)	25ms (Rising/Falling)	10ms Rising / 15ms Falling	10ms Rising / 15ms Falling
Audio Power / Speakers	2 Speakers x 2 Watts	2 Speakers x 1.5 Watts	2 Speakers x 1.5 Watts	No	No
Viewing Angle (L/R/T/B)	89/89/89/89 degrees	70/70/50/70 degrees	70/70/50/70 degrees	89/89/89/89 degrees	89/89/89/89 degrees
Digital Signal Processing	3D interlace & DNR, 4H filter	No	No	3D interlace & DNR, 4H filter	3D interlace & DNR, 4H filter
Removable Desk Stand	N/A	Yes	Yes	N/A	N/A
Dimensions w/ Deskstand	N/A	N/A	N/A	N/A	N/A
Dimensions w/o Deskstand	8.8" x 8.72" x 1.85" / 223 x 221.4 x 47mm	19" x 4RU (rack units)	8.8" x 6.9" x 1.9" / 223 x 176.2 x 47mm	7.5" x 5.5" x 1.4" / 190 x 139.8 x 35.6mm	9.05" x 7.08" x 1.4" / 230 x 179.8 x 35.6mm
Operating Temp/Humidity	32 ~ 104°F / 0 ~ 40°C	32 ~ 122°F / -20 ~ 50°C 10% ~ 90% humidity	32 ~ 122°F / -20 ~ 50°C 10% ~ 90% humidity	14 ~ 140°F / -10 ~ 60°C	14 ~ 140°F / -10 ~ 60°C
Power Requirements	Regulated 12VDC, 2A; Negative Ground	11.5~13 VDC, 1.2A	11.5~13 VDC, 1.2A	12VDC 2A (9VDC ~ 24VDC)	12VDC 2A (9VDC ~ 24VDC)
Power Consumption	30 Watts	20 Watts (Max)	10 Watts (Max)	≤ 11 Watts (Max)	≤ 11 Watts (Max)
HDMI / DVI / DisplayPort / RS-232	x1 / No / No / No	x2 / No / No / x1 Input	x2 / No / No / x1 Input	x1 / No / No / No	x1 / No / No / No
VGA	x1 15-pin mini D-sub Input	x1 15-pin mini D-sub Input	x1 15-pin mini D-sub Input	No	No
Composite	x1 BNC Input; x1 BNC Output	x1 BNC Input; x1 BNC Output	x1 BNC Input; x1 BNC Output	x1 BNC Input; x1 BNC Output	x1 BNC Input; x1 BNC Output
Component	No	No	No	No	No
S-Video	No	No	No	No	No
Audio	x1 RCA L/R Input; x1 PC 3.5mm Input	x2 R/L (RCA) Inputs; x1 3.5mm PC Input	x2 R/L (RCA) Inputs; x1 3.5mm PC Input	x1 3.5mm Output	x1 3.5mm Output (x2)
Power	x1 2.1mm DC Input	x1 2.1mm DC Input	x1 2.1mm DC Input	x1 2.1mm DC Input	x1 2.1mm DC Input
Weight	Net: 3.3 lbs / 1.5 kg Gross: 5.35 lbs / 2.43 kg	Net: 6.1 lbs / 3.05 kg	Net: 2.9 lbs / 1.3 kg	Net: 1.85 lbs / 0.84 kg	Net: 2.9 lbs / 1.3 kg
Additional Information				Battery Pack options available	

7"

7"

7"

5.6"

5.6"



Model	LED-711-4K2	LED-709HD	LED-720	LED-566HD	LED-566HDM
Mount	Rack Mount: 3RU	Wall: VESA 75 x 75mm Includes removable Desk Stand	Flush Mount	Free-standing; ¼ - 20 pad on top & bottom	Wall: VESA 75 x 75mm; ¼ - 20 pad on top & bottom
HD Compatible	Yes (displays up to 2160p)	Yes	No	Yes	Yes
Anti Glare Coating	Yes	Yes	Yes	Yes	Yes
Case	Durable Metal	Durable ABS Plastic	Durable ABS Plastic	Rubberized Durable ABS Plastic	Durable Metal
Built-in Power Supply	No	No	No	No	No
IR Remote Control	No	Yes	No	No	Yes
Native Aspect Ratio	16:9	16:9	16:9	4:3	4:3
Visible Screen Size (WH)	5.95" x 3.7" / 151.2 x 94mm (x2)	6" x 3.4" / 152.4 x 86.36mm	6" x 3.4" / 152.4 x 86.36mm	4.4" x 3.3" / 112.9 x 84.7mm	4.4" x 3.3" / 112.9 x 84.7mm
Resolution	1920 x 1200; displays up to 4K (4096 x 2160p)	800 x 480	800 x 480	640 x 480 (displays up to 1080i/p)	640 x 480 (displays up to 1080i/p)
Brightness Rating	450 cd/m ²	250 cd/m ²	220 cd/m ²	350 cd/m ²	350 cd/m ²
Contrast Ratio	1,100:1	500:1	200:1	500:1	500:1
Back Light	LED (50K)	LED (20K)	LED (10K)	LED (20K)	LED (20K)
PC Compatibility	Yes	Yes	No	Yes	Yes
Dot Pitch	0.07875(H) x 0.7875(V) mm	0.0642(H) x 0.1790(V) mm	0.321(H) x 0.372(V) mm	0.053(H) x 0.159(V)mm	0.059(H) x 0.176(V)mm
Color Depth	16.7 million	1.2 million	16.7 million	262,144	262,144
Response Time	10ms Rising / 15ms Falling	25ms (Rising/Falling)	25ms Rising / 15ms Falling	10ms/15ms (Rising/Falling)	10ms/15ms (Rising/Falling)
Audio Power / Speakers	No	2 Speakers x 1.5 Watts	No	2 Watts	No
Viewing Angle (L/R/T/B)	89/89/89/89 degrees	70/70/50/70 degrees	45/45/20/45 degrees	70/70/50/70 degrees	70/70/50/70 degrees
Digital Signal Processing	3D interlace & DNR, 4H filter	No	No	No	No
Removable Desk Stand	N/A	Yes	N/A	No	No
Dimensions w/ Deskstand	N/A	N/A	N/A	N/A	N/A
Dimensions w/o Deskstand	19" x 5.5" x 1.4" / 482.6 x 139.8 x 35.6mm (3RU)	6.9" x 5.3" x 1.4" / 174 x 134 x 35mm	6.9" x 4.3" x 1.2" / 174 x 109.2 x 30.5mm	6.2" x 5.1" x 1.7" / 158 x 130 x 42mm	5.3" x 5.2" x 0.8" / 134 x 132.6 x 21mm
Operating Temp/Humidity	14 ~ 140°F / -10 ~ 60°C	-4 ~ 158°F / -20 ~ 70°C 10% ~ 90% humidity	32 ~ 140°F / 0 ~ 60°C	-4 ~ 140°F / -20 ~ 60°C 20% ~ 80% humidity	-4 ~ 140°F / -20 ~ 60°C 20% ~ 80% humidity
Power Requirements	12VDC 2A (9VDC ~ 24VDC)	10VDC ~ 27 VDC Input; 2A + pin; Negative Ground	10VDC ~ 27VDC Input; 2A + pin; Negative Ground	12VDC / 630mA	12VDC / 630mA
Power Consumption	≤ 22 Watts (Max)	24 Watts (Max)	12 Watts (Max)	5 Watts (Max)	5 Watts
HDMI / DVI / DisplayPort / RS-232	x1 / No / No / No (per monitor)	x1 / No / No / No	No / No / No / No	x1 / No / No / No	x1 / No / No / No
VGA	No	x1 15-pin D-sub Input	No	No	No
Composite	x1 BNC Input; x1 BNC Output (per monitor)	x1 RCA and x1 BNC Input on cable	x1 BNC Input; x1 BNC Output (per monitor)	x1 BNC Input; x1 BNC Output	x2 BNC Inputs
Component	No	No	No	No	No
S-Video	No	No	No	No	No
Audio	x1 3.5mm Output (x2)	x1 RCA Input on cable	No	x1 3.5mm Input; x1 3.5mm Output	x1 A/V Input; x1 Output
Power	x1 2.1mm DC Input	x1 2.1mm DC Input	x1 2.1mm DC Input	2.1mm DC Input (AC Adapter not included)	x1 2.1mm DC Input
Weight	Net: 6.15 lbs / 2.79 kg	Net: 0.75 lbs / 0.34 kg; Gross: 2.85 lbs / 1.3 kg	Net: 0.75 lbs / 0.34 kg	Net: 0.88 lbs / 0.4 kg Gross: 1.6 lbs / 0.7 kg	Net: 0.88 lb / 0.4 kg Gross: 2 lbs / 0.9 kg
Additional Information				Electromagnetic Shielded; Color Temperature: 5600K ~ 6500K (user adjustable); Auto Power On; Mirror Image; Auto Signal Resolution	Electromagnetic Shielded; Color Temperature: 5600K ~ 6500K (user adjustable); Auto Power On; Mirror Image; Auto Signal Resolution

5.6"



5"



5"



Model	LED-566HDMXLX	LED-504HDMx3	LED-502V
Mount	Flush Mount; No Front Controls	Rack Mount (2RU)	Free-standing; ¼ - 20 pad on top & bottom
HD Compatible	Yes	Yes	Yes
Anti Glare Coating	Yes	Yes	Yes
Case	Durable Metal	Durable Metal	Rubberized Durable ABS Plastic
Built-in Power Supply	No	No	No
IR Remote Control	Yes	No	No
Native Aspect Ratio	4:3	16:9; switchable to 4:3	4:3
Visible Screen Size (WH)	4.4" x 3.3" / 112.9 x 84.7mm	4.25" x 2.55" / 108 x 64.8mm	4" x 3" / 101.57 x 76.18mm
Resolution	640 x 480 (displays up to 1080i/p)	800 x 480 (displays up to 1080i/p)	640 x 480 (displays up to 1080i/p)
Brightness Rating	350 cd/m ²	500 cd/m ²	250 cd/m ²
Contrast Ratio	500:1	500:1	500:1
Back Light	LED (20K)	LED (50K)	LED (15K)
PC Compatibility	Yes	Yes	No
Dot Pitch	0.059(H) x 0.176(V)mm	0.045mm x 0.135mm	0.053(H) x 0.159(V)mm
Color Depth	262,144	8 bit, 16.7 million colors	262,144
Response Time	10ms/15ms (Rising/Falling)	10ms/10ms (Rising/Falling)	10ms/15ms (Rising/Falling)
Audio Power / Speakers	No	2 watts	N/A
Viewing Angle (L/R/T/B)	70/70/50/70 degrees	70/70/50/70 degrees	70/70/50/70 degrees
Digital Signal Processing	No	3D Comb Filter	No
Removable Desk Stand	No	No	No
Dimensions w/ Deskstand	N/A	N/A	6.2" x 5.1" x 2.2" / 158 x 130 x 55mm w/ battery pack
Dimensions w/o Deskstand	6.85" x 6.89" x 0.89" / 174 x 175 x 22.5mm	19" x 3.46" x 1.34" / 482.6 x 88 x 34mm	6.2" x 5.1" x 1.7" / 158 x 130 x 42mm
Operating Temp/Humidity	-4 ~ 140°F / -20 ~ 60°C 20% ~ 80% humidity	-4 ~ 131°F / -20 ~ 55°C 20% ~ 80% humidity	-4 ~ 140°F / -20 ~ 60°C 20% ~ 80% humidity
Power Requirements	12VDC / 630mA	9VDC ~ 24VDC; 3A; Positive Pin; Negative Ground	12VDC (6 ~ 24V), <10mA
Power Consumption	5 Watts	<25 Watts	1.2 Watts
HDMI / DVI / RS-232	x1 / No / No / No	x3 (x1 per monitor) / No / No / No	x1 / No / No / No
VGA	No	No	x1 8-pin mini-DIN Input
Composite	x2 BNC Inputs	x3 BNC Inputs; x3 Outputs (x1 per monitor)	x1 BNC Input; x1 RCA Input
Component	No	No	No
S-Video	No	No	No
Audio	x1 A/V Input; x1 Output	x3 3.5mm Inputs; x3 3.5mm Headphone Outputs (on front)	x1 3.5mm Input w/ RCA to 3.5mm cable; x1 3.5mm PC Output
Power	x1 2.1mm DC Input	x1 2.1mm DC Input	x1 2.1mm DC Input
Weight	Net: 0.88 lbs / 0.4 kg Gross: 1.6 lbs / 0.7 kg	Net: 3.46 lbs / 1.57 kg Gross: 6.6 lbs / 3 kg	Net: 0.88 lbs / 0.4 kg Gross: 1.6 lbs / 0.7 kg
Additional Information	Electromagnetic Shielded; Color Temperature: 5600K ~ 6500K (user adjustable); Auto Power On; Mir- ror Image; Auto Signal Resolution	Auto Power On; Image Flip - H, V, H/V Auto Signal Resolution Scaling; NTSC/PAL Auto-sensing	Electromagnetic Shielded; Color Temperature: 5600K ~ 6500K (user adjustable); Auto Power On; Mir- ror Image; Auto Signal Resolution

18.5" PC



7" Tester



Video Wall Processor



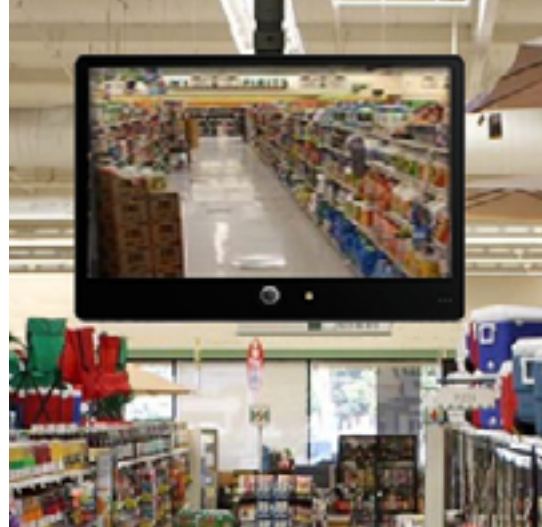
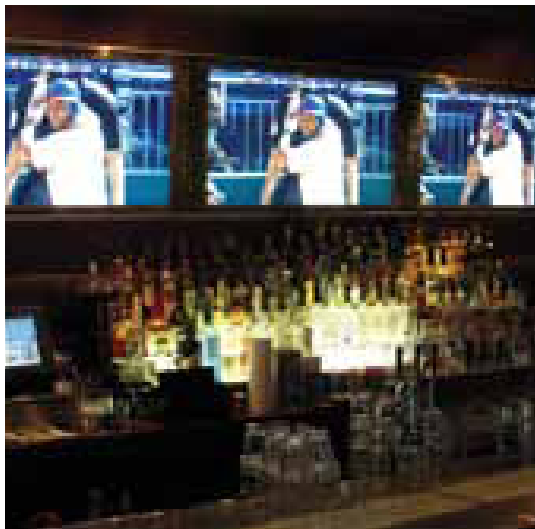
Key

- 4K/UHD** 3840 x 2160 resolution; more detail than FHD
- CCFL**..... LCD monitor with cold cathode fluorescent backlight
- FHD**..... Full high definition, as characterized by 1080 horizontal lines of vertical resolution
- HD**..... High definition, will display a 1080p signal
- KIT** Monitor + Tote Bag + AC Adaptor (when applicable) + rechargeable battery (when applicable)
- L**..... Flush mount kit
- LED** LCD monitor with LED backlight
- M**..... Metal case
- Nit**..... Measure of brightness (1 candle per square meter)
- R**..... Rack mount kit
- RU**..... Rack Unit (occupying 1.75" of vertical space)
- T**..... Has TV tuner
- TLM** TV in metal case for use behind the mirror
- TS**..... Touch screen
- Underscan** Broadcast term meaning that 100% of the picture is viewable vs. overscan
- V**..... Has either VGA or DVI computer input
- VESA** Standard monitor mounting interface pattern
- VGA** Has capability of receiving computer input
- X**..... Has no front controls

Model	AIO-1850	LED-710-4KIP	VWP-4x4
LCD Display	18.5" with LED backlight	7" IPS Panel	N/A
Resolution	1366 x 768 (displays up to 1080i/p)	1280 x 800 (displays up to 2160i/p)	N/A
CPU	Intel Core i5 (2.32Ghz dual-core)	1.2GHz quad-core ; includes Android 5.1 OS; GPU: Mali 400	Intel Xeon E5-1620V3 3.5GHz Quad-Core (4 Cores / 8-Threads) 10MB Processor
Memory	8GB DDR3	1GB	16GB DDR4 2133MHz
Storage	128GB SSD	8GB Flash	256GB PRO 6GB/s SSD Drive; Extra SSD bay (hot swappable)
Video Card(s)	Intel HD Graphics 4000	Intel GMA 3150	Matrox Mura MPX-4/4 (I/O); Control Card: Matrox P690
Wireless Connectivity	Wi-Fi, 802.11 b/g/n	802.11 b/g/n; ability to create WiFi hotspot	Intel I210-AT 10 / 100 / 1000MB
Wired Connectivity	x1 RJ45 port	x1 RJ45 IP/LAN port; x1RJ45 PSE port - ethernet power test	x2 RJ45 port
Control Input	2-point, 5-wire Resistive Touchscreen; RS-232: x1 9-pin Input / Output	Projected Capacitive Touchscreen	Keyboard; Mouse
USB Ports	x2 USB 2.0 Inputs; x2 USB 3.0 Inputs	x1 port for 5V 2amp power only; does not transfer data	x8 USB 3.0
Mobile Communication	Not included	Not included	Not included
SD Card Port		Includes 8GB SD for storage; 32GB max	
Dimensions	17" x 10.5" x 2.6" / 444.5 x 266.7 x 66mm; 7RU	9.45" x 6" x 1.8" / 240 x 154 x 46mm	19" x 7" x 20.8" / 482.6 x 177.8 x 528.3mm
Operating Temp/Humidity	-4 ~ 140°F / -20 ~ 60°C 10% ~ 90% humidity	41 ~ 95°F / -10 ~ 50°C 3 ~ 90% humidity	
Camera	N/A	N/A	N/A
Audio	2 Speakers x 5 Watts; x1 3.5mm MIC Input; x1 3.5mm Output	x1 Input; x1 Output (for headphones)	x1 Line Input; x1 Mic Input; x1 Center Output; x1 Surround Output; x1 S/PDIF Output; x1 Line Output
Power Consumption		3.6 Watts (active); 10 milliwatts (Stand-by)	6.5 Watts
Power	12 VDC; 5A	12VDC 2amp; Battery: 7.4V 5400mAh Lithium Polymer battery	500 Watt, 80+ efficiency, high performance, low noise
Weight	Net: 9.85 lbs / 4.47 kg Gross: 13.5 lbs / 6.12 kg	Net: 1.4 lbs / 620g	Net: 24 lbs / 10.89 kg
Additional Information	Wall: VESA 100 x 100mm; Removable RackMount: 7RU Screen: 450 cd/m ² brightness; 1,000:1 contrast; 3D Comb Filter HDM: x1 Output; VGA: x1 15-pin D-Sub Output	IP (ONVIF): x1 RJ45 Input; RTSP and ONVIF; CVBS (analog): x1 BNC Input; x1 BNC Output (looping); PTZ control / RS485 control (baud 600 -115,200bps) supporting over 30 protocols; HD Coaxial (BNC): x1 TVI/CVI/AHD Input (shared with CVBS); UTC control; HD-SDI/EX-SDI: x1 Input; supports 1080p 30fps (50/60Hz); HDMI: x1 v1.4 Input; x1 Output; supports 1080p; PoE: x1 48V Output; 24watts max power	Mount: Rack 4RU; Wall Mount option available; System Board: Gigabyte ATX server mother board with (4) PCI-E 3.0 x16; (2) PCI-E 2.0 x1; Video Wall Mgmt Software: VuWall 2; DVD+RW Recordable Drive; Windows Professional OS Other models: VWP-8x8, VWP-12x12, and VWP-16x16



Reliable in 24 / 7 environments
Over 80 Commercial-grade models
3 year Warranty on most models



3257 17th Ave West, Building 1, Suite 201, Seattle WA 98119
T: (206) 623 6000 E: info@totevision.com W: totevision.com