

2023 TOMLINSON® CATALOG



tomlinson®
A DIVISION OF 1880 HOSPITALITY

ADDRESS

11699 Brookpark Road, Unit 500
Parma, Ohio 44130

CONTACT

tomlinson1880.com
(800) 945-4589



Founded in 1911, Tomlinson® is the world's foremost designer of faucets and fittings for dispensing a wide variety of beverages, including coffee, tea, chocolate, water, wine and beer, as well as condiments and many other liquid products. Our No-Drip® and Pro-Flo® faucets and fittings are the choice of manufacturers of beverage and liquid containers around the world.

The S Tomlinson is the industry standard beverage-dispensing faucet.



TABLE OF CONTENTS

NO-DRIP® FAUCETS

S Tomlinson.....	3
ES Tomlinson	3
SM Tomlinson	3
Pinch Tube Faucet.....	4
SPB Tomlinson	4
SPBH Tomlinson	4
A16C.....	5
A16CEC	5
A78-8".....	5
A16CW.....	5
A16CNYB.....	6
MSP/M Series	6
MSB	6
MSBH	7
MSBRH 3/8"-18	7
MSBRH, G-1/2"	7
PSC-BR-8.....	7
HPSC-BR.....	8

HPSBC.....	8
HPSBCH	8
HPSJW	8
HFSA	9
HFSH	9
HFS-3F.....	9
HFS.....	9
Antimicrobial Technology	9
HFSL.....	10
Touch Guard®	10
HFS® Cup Trip Handle.....	10
HFSG-1	11
850	11
Bag-In-Box Cap Remover Tool.....	11
HFSS.....	11
HFSP	12
HFSR	12
CBT.....	12
PPSHP-8 1/4" Flare	12

MAINTENANCE & REPAIR

Replacement Parts.....	13
Guage Shield & Glass	15

PRO-FLO® & RO FAUCETS

MS Series	15
Bubblers	16
Projector Heads	16
Cartridges.....	16
Contemporary RO Faucets.....	17
Designer RO Faucets.....	17
Value RO Faucets.....	18
Point-of-Use Lead-Free Faucets....	19
Fountain Glass Fillers.....	19

The faucets and fittings shown and listed in this catalog are considered to be the most popular and commonly used items. Contact factory for a complete technical catalog if additional faucets and fittings are required.



Most Tomlinson products have been certified by NSF International.

No-Drip® Faucets

S Tomlinson

The S Tomlinson is the industry standard beverage-dispensing faucet. Chromed brass body with 1-1/32"-14 UNS threads and metal-threaded nylon bonnet. Fits 1/2" NPS union nut or wing nut shanks.

Model #	Description
1000437	S Tomlinson
1000541	SC Tomlinson – Same as S but with chromed brass bonnet.



ES Tomlinson

Economy version of our S faucet. Chromed brass body with 1-1/32"-14 UNS threads and black nylon bonnet. Fits 1/2" NPS union nut or wing nut shanks.

Model #	Description
1000484	ES Tomlinson
1000500	ESC Tomlinson – Same as ES but with chromed brass bonnet
1008225	ESP – Same as ES but with black high temperature polymer body



SM Tomlinson

Chromed brass body with black nylon metal-threaded bonnet, integral chromed brass shank with nylon metal-threaded 7/8"-14 NF wing nut and gasket. Fits liquid carriers with 7/8"-14 external threaded bushing

Model #	Description
1000615	SM Tomlinson
1000600	SCM – Same as SM but with chromed brass bonnet
1000690	SPBM – Same as SM but with black polypropylene body, black nylon bonnet and brass metal-threaded hex nut
1000666	SPBCM – Same as SPBM but with chromed brass bonnet



PLEASE NOTE: Faucet now includes brass metal-threaded hex nut

No-Drip® Faucets

Pinch Tube Faucet

The Pinch Tube Faucet is used with a super-sanitary disposable bag and tube. The tube is inserted through the faucet; product does not come in contact with the faucet. The pinch tube requires no cleaning. Matching shank assembly available.

Model #	Description
1018014	600T3P
1019533	600T3P – Same as 600T3 Pinch Tube Faucet but with polypropylene bonnet
1019576	600T4P – Male threaded faucet
1025215	600T3G – Vertical spout



SPB Tomlinson

Same as Model S, but with black polypropylene body with 1 1/32"-14 UNS threads, black nylon bonnet and stem. Use with 16CNY or 16TNY Series shanks.

Model #	Description
1018305	SPBA Tomlinson
1000662	SPBC Tomlinson – Same as SPB but with chromed brass bonnet
1000732	TTSPB – Same as SPB but with optional Cup Trip handle. Cup Trip may be ordered with any SP Series faucet



SPBH Tomlinson

Black polypropylene body with 3/8"-18 NPSM threads and "Nudger" handle. Complete with two washers and aluminum jam nut.

Model #	Description
1000669	SPBH Tomlinson
1000700	SPBT with 1-11/32" NPS long threads
1019433	SPBJ with washer and jam nut and 7/8"-14 UNF-2A threads



No-Drip® Shank Assemblies

A16C

Chromed brass 1/2" NPS union nut hex shank with 1/2"-14 NPSM threads. Standard on most institutional coffee urns.

Model #	Description
1000752	A16C
1000754	A16C-1/8" – Same as A16C but drilled and tapped 1/8" NPT for gauge shield assemblies or shut-offs



A16CEC

Chromed brass 1/2" NPS union nut hex shank 2-7/8" long with 1/2"-14 NPSM threads.

Model #	Description
1000760	A16CEC
1000762	A16CEC-1/8" – Same as A16CEC but drilled and tapped 1/8" NPT for gauge shield assemblies or shut-offs



A78

3/4" Buffed Aluminum Gauge Shield Assembly. Fits A16C and A16CEC shanks. Standard lengths from 4" to 20". See page 15 for common lengths and options.

Model #	Description
1000854	A78-8" Assembly

Please note: Anodized Gauge Shield are available



A16CW

Chromed brass 1/2" NPS round shank with broached flats for a wrench and 1/2"-14 NPSM threads.

Model #	Description
1000774	A16CW1



No-Drip® Faucets & Shank Assemblies

A16CNYB

Black nylon 1/2" NPS round shank with 1/2"-14 NPSM threads, nylon wing nut and adjustable flange nut. Complete with two washers and nylon jam nut. Fits SP Series faucets.



A16CNYB

Model #	Description
1000771	A16CNYB
1000790	A16TNYB – Same as A16CNYB but with a shorter shank



A16TNYB

MSP/M Series

Black polypropylene body with integral shank and 3/8"-18 NPSM threads and 5/8" O.D. buffed aluminum gauge shield. Standard gauge lengths listed and custom lengths available.

Model #	Description
1009734	MSP/M 4" (with 4" gauge shield)
1022601	MSP/M 7-1/2" (with 7-1/2" gauge shield)
1022747	MSP/M 10" (with 10" gauge shield)



MSB

Black polypropylene body with 1-1/32"-14 UNS threads and self-closing, lock-open vertical handle. Fits 1/2" NPS union or wing nut shanks. Handle may be imprinted at additional cost. Can be used with 16CNY or 16TNY Series shanks.

Model #	Description
1000274	MSB



No-Drip® Faucets

MSBH



Black polypropylene body with integral shank and 3/8"-18 NPSM threads. Complete with two washers and aluminum jam nut.

Model #	Description
1000278	MSBH
1000279	MSBH – Same as above but with 2 washers and plastic jam nut



MSBRH 3/8"-18



Chromed brass body with 3/8"-18 NPS threads, black nylon bonnet and a diagonal self-closing, lock-open handle. Flat on shank to accommodate a shield assembly.

Model #	Description
1000319	MSBRH 3/8"-18



MSBRH, G-1/2"



Chromed brass body, black nylon bonnet with a diagonal self-closing, lock-open handle. 0.5" (13 mm) inlet I.D. has G-1/2" threads.

Model #	Description
1015658	MSBRH, G-1/2"



PSC-BR-8



Chromed brass body and shank with 1/2"-20 UNF threads, nickel-plated brass stem, pinned nylon handle, chromed bonnet. Complete with two washers and nickel-plated brass jam nut. May be drilled and tapped for gauge.

Model #	Description
1000392	PSC-BR-8



No-Drip® Faucets

HPSC-BR

Chromed brass body, shank and bonnet, nylon handle and stem, two washers and nickel-plated brass jam nut. Faucet has 1/2"-20 UNF threads. May be drilled and tapped for gauge.

Model #	Description
1000387	HPSC-BR
1000384	HPS-BR – Same as HPSC-BR but with black polypropylene bonnet



HPSBC

Black polypropylene body with 1/2"-20 UNF threads, chromed brass bonnet, two washers and aluminum jam nut.

Model #	Description
1000352	HPSBC
1000350	HPSB – Same as HPSBC but with black polypropylene bonnet



HPSBCH

Black polypropylene body with 5/8"-18 UNF threads, chromed brass bonnet, two washers and aluminum jam nut.

Model #	Description
1000361	HPSBCH
1000376	HPSBH – Same as HPSBCH but with black polypropylene bonnet



HPSJW

Small self-closing faucet with white polypropylene body, threads, and bonnet. White nylon handle. 5/8"-18 male threads.

Model #	Description
1000254	HPSJW



Please note: Faucet can be individually bagged upon request

No-Drip® Faucets

HFSA



Industry standard for bottled water coolers. Black polypropylene body with 3/4"-16 UNF threads. Complete with two washers and plastic jam nut.



Model #	Description
1000019	HFSA

HFSH



Black polypropylene body with 3/8"-18 NPS threads and hose barb for 1/2" I.D. tubing.

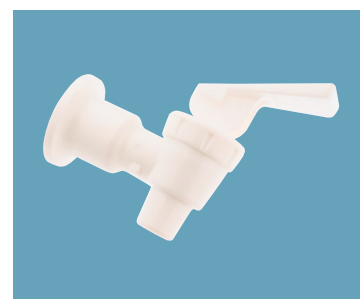


Model #	Description
1000191	HFSH
1000190	HFSH-1 – Same as HFSH but without hose barb

HFS-3F



White polypropylene body with internal 3/8"-18 NPS threads and .05" (1 mm) recess for washer in the back of the flange.



Model #	Description
1008779	HFS-3F

HFS



Polypropylene body with 3/8-18 NPS internal threads. Integral flange has recess for washer.

Model #	Description
1000113	HFSF

Antimicrobial Technology

Now available for HFSF and HFSL faucets, antimicrobial technology can be built in to last the life of the faucet. Antimicrobial technology inhibits bacterial growth on the faucet by attacking the microbes and reducing growth on the surface. Ask us today about antimicrobial technology for your HFSF or HFSL faucet.



HFSF with Antimicrobial Technology



HFSL with Antimicrobial Technology

No-Drip® Faucets

HFSL



Polypropylene body with 3/4"-16 UNF threads. This faucet is used on ceramic water dispensers complete with two washers and one jam nut. Color options include white, blue, black and beige.

Model #	Description
1018854	HFSL – White
1018851	HFSL – Blue
1018855	HFSL – Black
1018852	HFSL – Beige



Touch Guard®



Touch Guard® faucets are resistant to child access for children 3-1/2 years and younger. Touch Guard® upper assembly reduces accidental dispensing. Available separately, or can be assembled to any HFS® Series faucet at factory

Model #	Description
1009313	Red upper assembly
1009312	Blue upper assembly
1009314	White upper assembly



HFS® Cup Trip Handle



Cup Trip handle permits one-hand dispensing. Available separately, or can be assembled to any HFS® Series faucet at factory

Model #	Description
1913427	Red handle
1913429	Blue handle
1913428	White handle
1912263	Black handle



No-Drip® Faucets

HFSG-1

Bagged white polypropylene body, threads and bonnet. White nylon handle. 3/4"-16 male threads.

Model #	Description
1014667	HFSG-1

850

Polypropylene body. Fits all 38 mm thread spouts with 1.2" I.D. (30 mm). Applications include containers for ketchup, mustard, syrups, applesauce and concentrates. Available in brown, red, silver and black.

Model #	Description
1000947	850



920A Bag-In-Box Cap Remover Tool

The heavy-duty bag-in-box cap remover tool is made of reinforced plastic, eases removal of caps and reduces the chance of injury and product waste. Standard color is red. Optional colors and custom imprinting are available.

Model #	Description
1913305	920A Cap Remover Tool



HFSS

Black polypropylene body. Fits all 38 mm thread spouts with 1.2" I.D. (30 mm). Applications include containers for wines, juices, syrups, water and cleaning solvents.

Model #	Description
1000231	HFSS

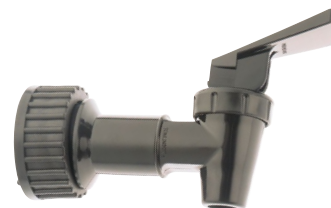


No-Drip® Faucets

HFSP

Black polypropylene body. Fits Scholle* diaphragm spouts. Applications include containers for wine, juices, syrups, water and cleaning solvents.

Model #	Description
1000202	HFSP
1000228	HFSR to be used with QCD bag fitment



HFSR

Black polypropylene body. Fits Liqui-Box QC/D* spouts. Applications include bag-inbox packaging for wines, juices and syrups.

Model #	Description
1000228	HFSR



CBT

Black polypropylene pressure faucet for dispensing beer up to 30 PSI. Has hose barb for 3/16" (4.76 mm) I.D. tubing. Specially contoured for ease of use.

Model #	Description
1000004	CBT



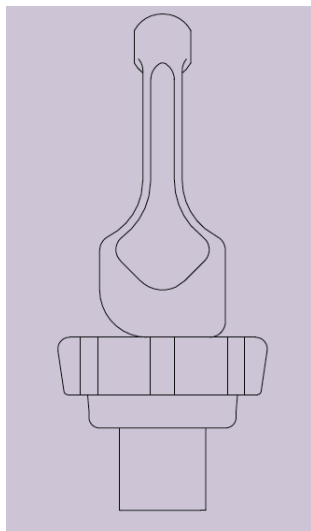
PPSHP-8 1/4" Flare

High-pressure faucet for dispensing water up to 120 PSI and 212°F. Chrome-plated brass body with flare end for 1/4" tubing. Complete with safety handle, aerator and bonnet safety clip.

Model #	Description
1017710	PPSHP-8 1/4" Flare
1007566	PPSHP-8 7/16"-20 – Similar to PPSHP-8 1/4" Flare but with 7/16"-20 threads
1010456	PPSHP-8 1/2"-20 – Similar to PPSHP-8 1/4" Flare but without flare end



Upper Assemblies and Replacement Parts



S SERIES

UPPER ASSEMBLIES



Model #	Description
1001013	Black plastic upper assembly for S Series
1001026	Same as above but in orange for decaf faucets
1001028	Same as above but in red for hot water faucets

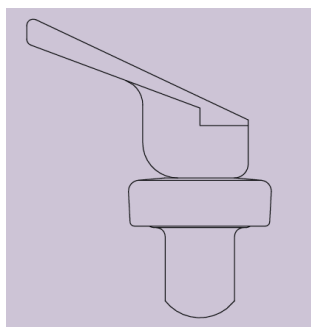
STANDARD REPLACEMENT PART

Model #	Description
1000949	Stem and Pin Set
1015877	3S10 Seat Cup, 25 per bag
1015878	3S10 Seat Cup, 50 per bag

SP SERIES

UPPER ASSEMBLIES

Model #	Description
1001031	Black plastic upper assembly for SP Series



HPS SERIES

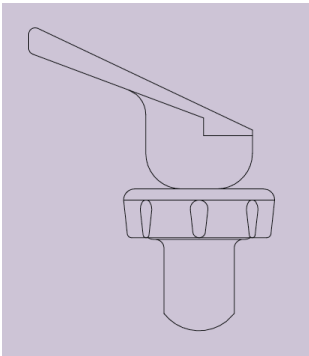
UPPER ASSEMBLIES

Model #	Description
1401140	A2-5PSC/173H-1 Chromed brass bonnet with lock-open handle

STANDARD REPLACEMENT PART

Model #	Description
1913381	3PS14S/4H-1 Stem/Seat Cup Set

Upper Assemblies and Replacement Parts

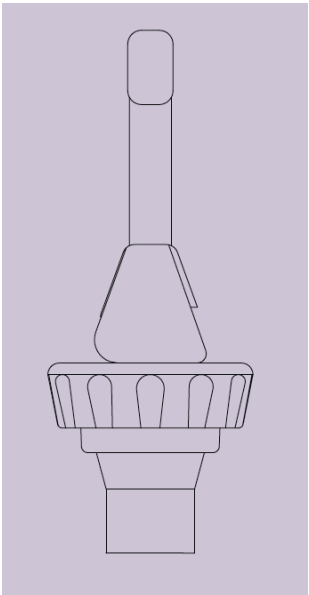


HFS SERIES

The standard upper assembly is interchangeable with any HFS Faucet and consists of the handle, bonnet, stem, spring and seat cup. Many color options are available. Blue and white are standard.

UPPER ASSEMBLIES	
Model #	Description
1008849	A2H1W/173HS1W – White upper assembly
1415822	A2H1BB/173HS1BB – Blue upper assembly

STANDARD REPLACEMENT PART	
Model #	Description
1913381	3PS14S/4H – 1 Stem/Seat Cup Set



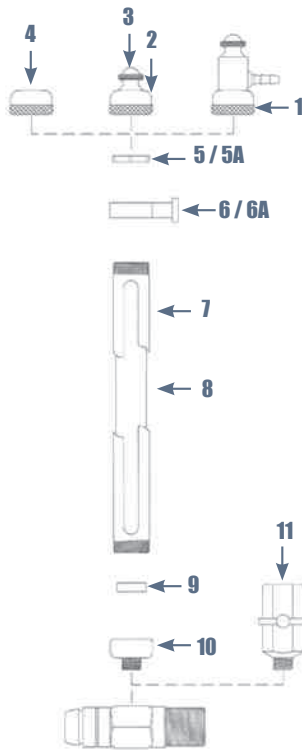
MS SERIES

UPPER ASSEMBLIES	
Model #	Description
1000989	A2-5M/13M3 with horizontal handle
1000992	A2-5M/13M5 with vertical handle

STANDARD REPLACEMENT PART	
Model #	Description
1901959	3MS Seat Cup, silicone
1901960	3MSE Seat Cup, rubber (EPDM)

Gauge Shield & Gauge Glass Replacement Parts

S SERIES



REPLACEMENT PARTS

2	77-3 Shield Cap	1902578	x
5	80LH Washer Cap	1902756	
6	4AL Shield Brace (Alum)	1901986	x
6A	4NYB Shield Brace (Nylon)	1902002	x
7	78- length Gauge Shield	See right	
8	81-5/8" x length Gauge Glass	See right	
9	79E Shield Base Washer	1902751	
10	76-2 Shield Base	1702571	
11	A29AXB-3 Shut-Off Valve (2 pack)	1000792	x
	Gauge Washer Kit (Includes 4 cap and 2 base washers)	1000955	

X = Optional

* = Additional Lengths Available

BASIC 3/4" GAUGE SHIELD ASSEMBLIES*

A78-7"	1000849
A78-8"	1000854
A78-9"	1000868
A78-10"	1000875
A78-10-3/4"	1000882

3/4" ANODIZED GAUGE SHIELD REPLACEMENTS*

78-4"	1914198
78-7"	1913954
78-8"	1913056
78-9"	1913057
78-10"	1913928

5/8" GAUGE GLASS REPLACEMENTS*

81-5/8 x 4"	1902778
81-5/8 x 7"	1902783
81-5/8 x 8"	1902785
81-5/8 x 9"	1902787
81-5/8 x 10"	1902790
81-5/8 x 10-3/4"	1902794

MS SERIES



REPLACEMENT PARTS

2	80M-1 Upper Washer	1902757	x
3	4NY-5 Brace	1902003	x
4	78M Gauge Shield	See right	
5	81M Gauge Glass	See right	
6	79M1 Lower Washer	1902755	x

X = Optional

* = Additional Lengths Available

FOR MS AND MSP FAUCETS 78M X 5/8" O.D. GAUGE SHIELD*

10"	1902616
11"	1914134

81M X 1/2" O.D. GLASS* (FOR 5/8" GAUGE SHIELDS)

4"	1902760
10"	1902768
11"	1902769

Pro-Flo™ Faucets

Bubblers

Lead-free bubblers with easily replaceable self-contained 7701PFLF cartridge regulator. Has 3/8" NPS female connection. Threaded studs and mounting hardware available. Adjustable controlled stream meets conservation criteria. Pressure rating is 120 PSI / 8 BAR.

Model #	Description
1016448	7800PFLF Bubbler, stainless steel
1016128	7800PFLFB Bubbler, lead-free brass
1016452	7800PFLFS Bubbler, stainless steel satin finish
1016453	7800PFLFBVP Bubbler, vandal resistant

Projector Heads

Chrome-plated, lead-free brass projector heads with removable spout, stream director and screen. Has 3/8" NPS female connection. Available with set screw for protection from vandals.

Model #	Description
1016170	7-312LFB Projector Head
1016454	7-312LFBS Projector Head with set screw

Cartridges

Allows trajectory adjustment over wide range of pressures. Fits all brands of coolers. Stainless steel housing with plastic cover and rubber gasket included. Pressure rating is 120 PSI / 8 BAR.

Model #	Description
1016337	7701PFSBLF Cartridge, stainless steel with brass cover
1017157	7701PFLF Cartridge, stainless steel with plastic cover
1416355	7701PBW Cartridge for cooler, no spring, stainless steel

Please Note: Additional Flow Rates Available. Contact for more options.

Cartridge Holders/Regulators

Has 1/4" NPT female connection. Contains 7701PFLF cartridge. Also available with 5/16" diameter connections for brazing. Pressure rating is 120 PSI / 8 BAR.

Model #	Description
1016172	7-927LFB Cartridge Holder/Regulator, lead-free brass, solder in
1016171	7-925LFB Cartridge Holder/Regulator, lead-free brass, threaded with 1/4" NPT female threads



Reverse Osmosis “RO” Premium Faucets

600 Series Faucets

Made of high-quality lead-free brass, our Designer and Contemporary RO Faucets are a real standout. These faucets feature a smooth-operating ceramic disk element, lever-style handle, high-reach neck design of 12”, protective spout tip to prevent after-drip, and a patented modular air gap. The Designer and Contemporary RO faucets retrofit most brands and are shipped complete with preinstalled tubing for quick connections.

Contemporary Faucets

Has 1/4” NPT female connection. Contains 7701PFLF cartridge. Also available with 5/16” diameter connections for brazing. Pressure rating is 120 PSI / 8 BAR.

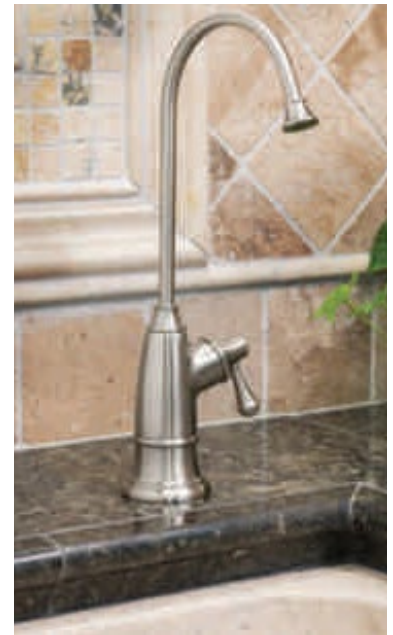
Model #	Description	Temperature
1020889	600CBRAG/SN,SATIN NICKEL	COLD WATER
1026576	600CBRAG/MB,MATTE BLACK	COLD WATER
1020587	600CBRAG,POLISHED CHROME	COLD WATER
1020896	600CBRAG/BSS,BRUSHED SS	COLD WATER
1020894	600CBRAG/BLK,BLACK PC	COLD WATER
1020890	600CBRHC/SN,SATIN NICKEL	HOT/COLD WATER
1020907	600CBRHC/AB,ANTIQUE BRONZE	HOT/COLD WATER



Designer Faucets

Has 1/4” NPT female connection. Contains 7701PFLF cartridge. Also available with 5/16” diameter connections for brazing. Pressure rating is 120 PSI / 8 BAR.

Model #	Description	Temperature
1019301	600PBRAG/SN,SATIN NICKEL	COLD WATER
1026577	600PBRAG/MB,MATTE BLACK	COLD WATER
1019299	600PBRAG,POLISHED CHROME	COLD WATER
1020518	600PBRAG/BSS,BRUSHED SS	COLD WATER
1019307	600PBRAG/BLK,BLACK PC	COLD WATER
1024293	600PBRAG/VB,VENETIAN BRONZE	COLD WATER
1019311	600PBRAG/AB,ANTIQUE BRONZE	COLD WATER
1020899	600PBRHC/SN,SATIN NICKEL	HOT/COLD WATER
1020900	600PBRHC/AB,ANTIQUE BRONZE	HOT/COLD WATER



Reverse Osmosis “RO” Value Faucets

Value RO Faucets

Lead-free ceramic disk faucets available in 6 styles and 2 finishes* offer many options to coordinate with any décor. These faucets feature engineered plastic housing and plastic water passages. Each faucet has 36” preinstalled 1/4” inlet tubing and 3” inlet shank with 7/16”-24 threads. The lead-free gooseneck spout swivels 360 degrees. Polished chrome-plated finish is standard; available in satin nickel in most styles.



VS603

NO AIR GAP

1022280	VS603 POLISHED CHROME
1022282	VS603 SATIN NICKEL

WITH AIR GAP

1022281	VS603AG
1022283	VS603AG SATIN NICKEL

VS888

NO AIR GAP

1022286	VS888 POLISHED CHROME
1022288	VS888 SATIN NICKEL

WITH AIR GAP

1022287	VS888AG POLISHED CHROME
1022289	VS888AG SATIN NICKEL

VS905

NO AIR GAP

1022292	VS905 POLISHED CHROME
1022294	VS905 SATIN NICKEL

WITH AIR GAP

1022293	VS905AG POLISHED CHROME
1022295	VS905AG SATIN NICKEL

VS713

NO AIR GAP

1022298	VS713 POLISHED CHROME
1022300	VS713 SATIN NICKEL

WITH AIR GAP

1022299	VS713AG POLISHED CHROME
1022301	VS713AG SATIN NICKEL

VS802

NO AIR GAP

1022387	VS802 POLISHED CHROME
---------	-----------------------

WITH AIR GAP

1022386	VS802AG Polished Chrome
---------	-------------------------

VS143

NO AIR GAP

1024997	VS143AG POLISHED CHROME
---------	-------------------------

WITH AIR GAP

1024998	VS143 POLISHED CHROME
---------	-----------------------

Pro-Flo™ Faucets

PF500 Series Point-of-Use Lead-Free Faucets

The PF500 Series are constructed of highly polished, chrome plated lead-free brass or stainless steel with preinstalled 1/4" O.D. plastic tubing. Faucets are available with or without an air gap. Each faucet has a self-closing handle and long reach spout. Faucets are individually poly-bagged with mounting hardware. Air gap version has connections for 1/4" inlet and 3/8" outlet. Pressure rating is 120 PSI/8 BAR. Optional 8" or 5" vertical gooseneck available. PF500C has smooth-operating ceramic disk cartridge.

PF500SS

NO AIR GAP		WITH AIR GAP	
1420996	PF500SS Faucet (stainless steel)	1420997	PF500SSAG Faucet with air gap

PF500LFBR

NO AIR GAP		WITH AIR GAP	
1420454	PF500LFBR Faucet (lead free brass)	1420456	PF500LFBRAG Faucet with air gap



Fountain Glass Fillers

Fountain glass fillers are constructed of lead-free brass, are lever actuated and have a 3/8" NPS connection. Available with 5" or 8" spout and handle options. Leveractuated vertical-mount glass filler is also available with 3/8" NPS female connection. Pressure rating is 120 PSI/ 8 BAR.

Model #	Description
1016166	P200,2LF Glass Filler, 5" spout
1016165	P200,1LF Glass Filler, 8" spout
1016174	V216 Glass Filler, Cup Trip, Vertical Mount
1016701	7-906-1 Glass Filler, 3/8" NPS, Vertical Mount





Limited One Year Warranty

We guarantee to the original purchaser of each Tomlinson product that any part thereof which proves to be defective in material or workmanship within one year of the date of shipment will be repaired or a replacement part furnished F.O.B. our factory.

Warranty will not apply if our examination shows product to be defective as the result of negligence, abuse, misapplication or alteration.

Tomlinson will not be responsible for unauthorized field service. Contact factory for instructions.

TERMS: Net 30 days, F.O.B. plant, Kenosha, WI U.S.A. See full Terms & Conditions on our website at tomlinson1880.com.

RETURNS: Return of merchandise requires an RMA number. Authorized returns are subject to handling and re-stocking charges of 15%. Items returned to factory must have transportation charges prepaid. Custom items are not returnable.

FOR RESALE ONLY: Prices and specifications subject to change without notice. We reserve the right to correct printing errors.



Most Tomlinson products have been certified by NSF International.

tomlinson®
A DIVISION OF 1880 HOSPITALITY

ADDRESS

11699 Brookpark Road, Unit 500
Parma, Ohio 44130

CONTACT

tomlinson1880.com
(800) 945-4589