

# MODULAR® DISPENSING SYSTEMS



**tomlinson®**

# MODULAR® DISPENSING SYSTEMS

## So Many Cup Sizes... One Indispensable Dispenser

### Modular® quality, now value priced.

The Simpli-Flex® 2000 makes cup dispensing easier than ever. One self-adjusting dispenser fits any size paper, plastic or foam cup up to 44 oz. (130 cl). Choose from wall or stand mount, in-counter or cabinet mount and surface mount styles.

The Simpli-Flex 2000 is built with the Modular durability and reliability you expect.



**Look for this symbol**

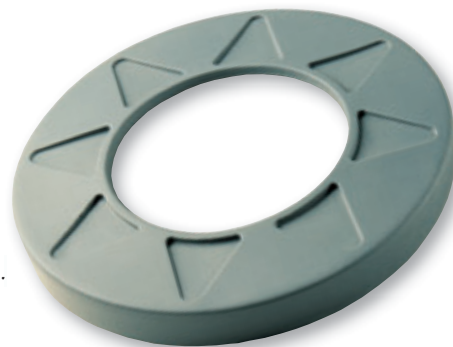
It means there's a  
Simpli-Flex 2000  
cup dispenser inside!



**Modular® dispensers feature the exclusive patented Simpli-Flex® gasket.**

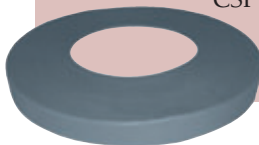
**A better gasket makes a better dispenser—  
here's why:**

- Totally self-adjusting.
- Accurately dispenses paper, plastic or foam cups up to 64 oz. (189 cl).
- One-at-a-time dispensing, every time.
- Seals cups from contamination.
- Constructed of NSF- and FDA-approved materials.
- Molded of tear-resistant silicone.
- Easy to install – it just slips on the dispenser!
- One-year warranty.



### #7 Series Gaskets Designed to Dispense Soft Foam Cups

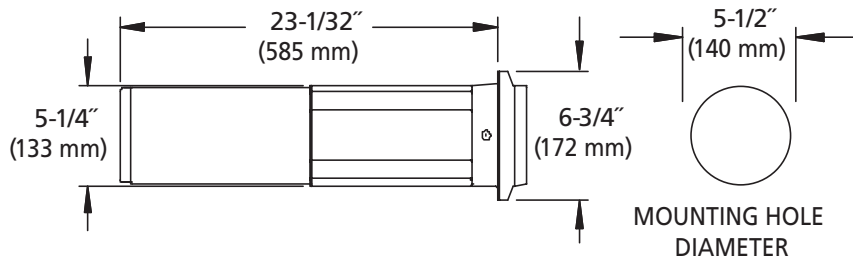
Are soft foam cups giving you a dispensing headache? Our #7 Series Gaskets are specifically designed to gently dispense soft foam cups. These gaskets will fit on any SF2000, SF1005, CSF1005 and ESF1005 cup dispenser and are designed to dispense cups from 8 to 44 oz. (24 to 130 cl.). Conversion kit (#1420169) includes three gaskets and is shipped with easy to follow instructions.



## The Simpli-Flex® 2000 Cup Dispenser

The Simpli-Flex® 2000 self-adjusting cup dispenser is shipped with three Simpli-Flex gaskets to fit any size paper, plastic or foam cup up to 44 oz. (130 cl.) or cups with a 2-1/4" – 4-5/8" (57 - 117 mm) lip diameter. Available for in-counter/cabinet mounting or under-counter/wall mounting.

### Mounting Specifications for SF2000 Cup Dispenser



Model # 1019380

#### Model # Description

#### Dimensions L x Dia inches (mm)



1015023	SF2000 Cup Dispenser (for in-counter/cabinet mounting)	23 x 5 (584 x 127)
1015470	ESF2000 Cup Dispenser (for under-counter/wall mounting)	23 x 5 (584 x 127)

#### Optional Stainless Steel Clamp Ring

#### Case Qty.

#### Ship Wt. (lbs./kgs.)

1019380	Stainless Steel Clamp Ring Assembly	1	.5/2
---------	-------------------------------------	---	------

#### Standard Spares

1415173	Gasket Kit (includes 5A, 5B and 5E gaskets)	1	.5/2
1908522	5A Gasket		
1915130	5B Gasket		
1910110	5E Gasket		

1415174	Screw Packet (for optional dispenser mounting)	1	.5/2
---------	--	---	------

1905844	Black Clamp Ring	1	.5/2
---------	------------------	---	------

## The Simpli-Flex® 2000 Portion Cup Dispenser

The Simpli-Flex® 2000 Portion Cup Dispenser is shipped complete with three Simpli-Flex gaskets to dispense portion cups with 1-9/16" – 2-1/3" (40 - 59 mm) lip diameter. Dispenser available for in-counter/cabinet mounting or for under-counter/wall mounting. Shipped 12 per case; approximate ship weight is 15 lbs. (7 kgs.).

#### Model # Description

#### Dimensions L x Dia inches (mm)



1015572	SFP2000 Portion Cup Dispenser (for in-counter/cabinet mounting)	14 x 3 (356 x 76)
1015751	ESFP2000 Portion Cup Dispenser (for under-counter/wall mounting)	14 x 3 (356 x 76)

#### Standard Spares

#### Case Qty.

#### Ship Wt. (lbs./kgs.)

1915669	7S Gasket	1	.5/2
1915581	7M Gasket	1	.5/2
1915592	7L Gasket	1	.5/2





# MODULAR® DISPENSING SYSTEMS

## Combination Cabinet Dispensers

A popular item in convenience stores and where counter space is limited, these cabinet dispensers combine cup, lid, domed lid and straw dispensing into one area, keeping counters clutter free and organized. Each cabinet is shipped with Simpli-Flex® cup dispensers for one-at-a-time dispensing of paper, plastic or foam cups up to 44 oz. (130 cl.). Cabinets can be customized to fit your needs.



Model # 1020396

Model #	Description	Dimensions D x H x W inches (mm)	Case Qty.	Ship Wt. lbs./kgs.
1019580	Stainless Steel High-Volume Cabinet; 5 cup dispensers; 4 lid and 2 straw organizers	24-7/8 x 33-1/2 x 14-1/2 (632 x 851 x 368)	1	60/30
1020384	Stainless Steel Cup/Lid/Straw Cabinet with 4 cup dispensers on left side; lid, straw organizers on right	22-1/4 x 27-3/4 x 14-1/2 (565 x 705 x 368)	1	50/25
1020396	Stainless Steel Cup/Lid/Straw Cabinet with 4 cup dispensers on right side; lid, straw organizers on left	22-1/4 x 27-3/4 x 14-1/2 (565 x 705 x 368)	1	50/25
1020470	Stainless Steel Cup/Straw/ Domed Lid Cabinet with 4 cup dispensers, 3 domed lid dispensers and 1 straw dispenser	28 x 35-5/8 x 13 (711 x 905 x 330)	1	50/25
1019768	Stainless Steel Lid/Straw Cabinet; 3 lid holders, 1 straw holder	8 x 28 x 8 (203 x 711 x 203)	1	30/15

Aluminum combination cabinet dispenser painted black with two CSF1004 cup dispensers and lower lid and condiment dispenser. Ideal for coffee service stations.

1020609	Black Painted Aluminum Cabinet	20 x 22 x 7 (508 x 559 x 178)	1	25/11
---------	--------------------------------	----------------------------------	---	-------

Countertop cabinets featuring two Simpli-Flex® 2000 cup dispensers and built-in top condiment and lid organizer. Black painted aluminum or stainless steel construction.

1021894	Black Painted Aluminum Cabinet	23 x 20 x 8 (584 x 508 x 203)	1	25/11
1023524	Stainless Steel Cabinet	23 x 20 x 8 (584 x 508 x 203)	1	25/11



Model # 1021894



## The Simpli-Flex® 2100 Molded Cabinet

The Simpli-Flex® 2100 Molded Cabinet includes one Simpli-Flex 2000 cup dispenser. This unit is durable – molded of heavy-duty high-impact plastic. This stackable cabinet is great for multiple dispensing applications. Optional top condiment and lid organizer is sold separately, complete with five compartments and four adjustable spacers.

	Model #	Description	Dimensions D x H x W inches (mm)	Case Qty.	Ship Wt. lbs./kgs.
NSF	1015385	SF2100 Molded Cabinet	22 x 9 x 8 (559 x 229 x 203)	4	33/15
	1015560	Top Condiment and Lid Organizer	21 x 4 x 7 (533 x 102 x 178)	1	4/2



## The Simpli-Flex® 2100 Series Cabinets

The Simpli-Flex® 2100 Series Cabinet Dispensers are shipped complete with Simpli-Flex 2000 cup dispensers. These beige or black painted aluminum cabinets have a stainless steel faceplate and are available with one, two, three or four cup dispensers. Stainless steel cabinets are also available.

	Model #	Description	Dimensions D x H x W inches (mm)	Case Qty.	Ship Wt. lbs./kgs.
NSF	Painted Aluminum Cabinets:				
	1015600	SF2101 Cabinet, beige - 1 hole	25 x 7 x 8 (635 x 178 x 203)	1	12/5
	1015599	SF2102 Cabinet, beige - 2 holes	25 x 14 x 8 (635 x 356 x 203)	1	17/8
	1015598	SF2103 Cabinet, beige - 3 holes	25 x 21 x 8 (635 x 533 x 203)	1	22/10
	1015393	SF2104 Cabinet, beige - 4 holes	25 x 28 x 8 (635 x 711 x 203)	1	25/11
	1017024	SF2101 Cabinet, black - 1 hole	25 x 7 x 8 (635 x 178 x 203)	1	12/5
	1016022	SF2102 Cabinet, black - 2 holes	25 x 14 x 8 (635 x 356 x 203)	1	17/8
	1015778	SF2103 Cabinet, black - 3 holes	25 x 21 x 8 (635 x 533 x 203)	1	22/10
	1015765	SF2104 Cabinet, black - 4 holes	25 x 28 x 8 (635 x 711 x 203)	1	25/11
	Stainless Steel Cabinets:				
	1015936	SF2101 Cabinet, SS - 1 hole	25 x 7 x 8 (635 x 178 x 203)	1	12/5
	1015909	SF2102 Cabinet, SS - 2 holes	25 x 14 x 8 (635 x 356 x 203)	1	17/8
	1015904	SF2103 Cabinet, SS - 3 holes	25 x 21 x 8 (635 x 533 x 203)	1	22/10
	1015935	SF2104 Cabinet, SS - 4 holes	25 x 28 x 8 (635 x 711 x 203)	1	25/11

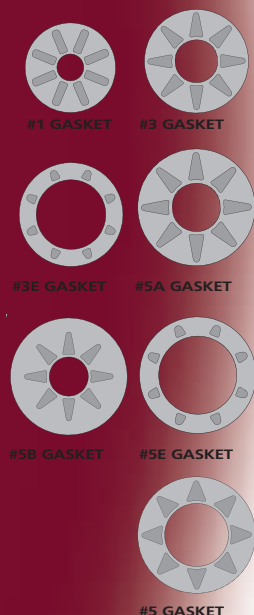
*Stainless steel cup dispensers are available for these cabinets.  
Optional painted colors are red, white and gray.  
Contact factory for availability and lead times.  
Minimum order or setup charge may apply.*

See page 12 for more information regarding condiment dispensers for these cabinets.



# MODULAR® DISPENSING SYSTEMS

## Simpli-Flex® Gasket Reference Chart



GASKET (Part #) Cup Lip Diameter	SF2000 For 3.5-44 oz. cups	CSF1003 For portion cups	CSF1004 For 3.5-22 oz. cups	CSF1005 For 16-44 oz. cups	CSF1006 For jumbo cups
#1 (1905841) 1-7/16"-2-3/8" 37mm-60mm		✓			
#3 (1904359) 2-3/8"-3-13/16" 60mm-97mm			✓		
#3E (1910115) 3-1/2"-3-11/16" 89mm-94mm			✓		
#5A (1908522) 3-1/2"-4-7/16" 89mm-113mm	✓			✓	
#5B (1915130) 2-1/4"-3-1/2" 57mm-89mm	✓			O	
#5E (1910110) 4-1/4"-4-5/8" 108mm-117mm	✓			✓	
#5 (1907797) 3-11/16"-5-1/2" 94mm-140mm					✓

✓ = Included with dispenser   O = Optional



## Simpli-Flex® Cup Dispensers for in-counter and cabinet mounting

Self-adjusting spring loaded in-counter/cabinet mount cup dispensers. Dispenser tube is made of stainless steel. Deluxe CSF1004 and Deluxe CSF1005 dispensers shipped with two Simpli-Flex® self-adjusting gaskets to dispense cups from 3.5 oz. (10 cl.) – 44 oz. (130 cl.).

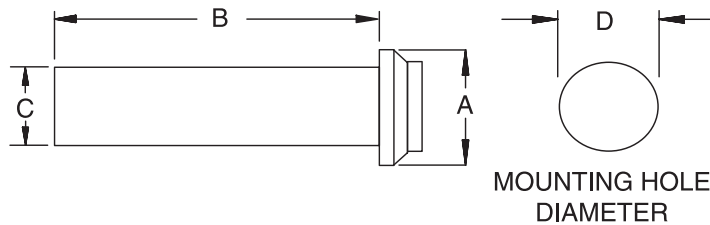


Model #	Description	Dimensions L x Dia inches (mm)	Case Qty.	Ship Wt. lbs./kgs.
1007699	CSF1003 for extra small/portion cups	24 x 3 (610 x 76)	12	36/16
1015202	Deluxe CSF1004 for medium cups	24 x 4 (610 x 102)	6	22/10
<b>Standard Spares</b>				
1904359	#3 Gasket		1	.5/.2
1910115	#3E Gasket		1	.5/.2
1905840	Black Clamp Ring		1	.5/.2
1015201	Deluxe CSF1005 for large cups	24 x 5 (610 x 127)	6	26/12
<b>Standard Spares</b>				
1908522	#5A Gasket		1	.5/.2
1910110	#5E Gasket		1	.5/.2
1905844	Black Clamp Ring		1	.5/.2
1009959	CSF1006 for jumbo cups	24 x 6 (610 x 152)	6	32/15

See page 6 for mounting specifications.

### SIMPLI-FLEX® CUP DISPENSER MOUNTING CHART

	CSF1003	CSF1004	CSF1005	CSF1006
A	4-21/32" (118 mm)	5-17/32" (141 mm)	6-23/32" (171 mm)	7-25/32" (198 mm)
B	22-1/2" (572 mm)	22-1/2" (572 mm)	22-1/2" (572 mm)	22-1/2" (572 mm)
C	3-3/32" (79 mm)	4" (102 mm)	5" (127 mm)	6-5/32" (156 mm)
D	3-1/2" (89 mm)	4-3/8" (111 mm)	5-1/2" (140 mm)	6-9/16" (167 mm)



## Simpli-Flex® Cup Dispensers for under-counter or surface mounting

Self-adjusting spring-loaded cup dispensers for under-counter or surface mounting. Dispenser tube is made of stainless steel. Deluxe ESF1004 and Deluxe ESF1005 dispensers shipped with two Simpli-Flex® self-adjusting gaskets to dispense cups from 3.5 oz. (10 cl.) – 44 oz. (130 cl.).

	Model #	Description	Dimensions L x Dia inches (mm)	Case Qty.	Ship Wt. lbs./kgs.
NSF	1003855	ESF1003 for extra small/portion cups	24 x 3 (610 x 76)	12	27/12
	1007614	Deluxe ESF1004 for medium cups	24 x 4 (610 x 102)	12	41/19
	1008494	Deluxe ESF1005 for large cups	24 x 5 (610 x 127)	12	48/22
	1008707	ESF1006 for jumbo cups	24 x 6 (610 x 152)	6	32/15

## Simpli-Flex® Cup Dispensers for wall and stand mounting

Self-adjusting pull type cup dispensers for wall and stand mounting. Dispenser tube is made of stainless steel. Deluxe SF1004 and Deluxe SF1005 dispensers shipped with two Simpli-Flex® self-adjusting gaskets to dispense cups from 3.5 oz. (10 cl) – 44 oz. (130 cl).

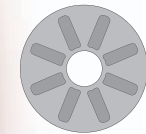
	Model #	Description	Dimensions L x Dia inches (mm)	Case Qty.	Ship Wt. lbs./kgs.
NSF	1007516	SF1003 for extra small/portion cups	16 x 3-1/8 (406 x 79)	12	23/10
	1007664	Deluxe SF1004 for medium cups	24 x 4 (610 x 102)	12	37/17
	1008188	Deluxe SF1005 for large cups	24 x 5 (610 x 127)	12	44/20
	1008702	SF1006 for jumbo cups	24 x 6 (610 x 152)	6	30/14



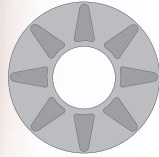
See pages 7 - 8 for mounting stands and accessories.



# MODULAR® DISPENSING SYSTEMS



1015P  
Model # 1905841



1002  
Model # 1905842



## SIMPLI-FLEX® CONE DISPENSER SELECTION CHART

CONE LIP DIAMETER		DISPENSER MODEL	
MIN.	MAX.	1015P	1002
1-3/8" (35 mm)	2-1/4" (57 mm)	CAKE	
1-1/2" (38 mm)	2" (51 mm)	SUGAR	
1-1/2" (38 mm)	2" (51 mm)	WAFFLE	
2-3/16" (56 mm)	3-1/16" (78 mm)		CAKE
3-1/4" (83 mm)	3-3/8" (86 mm)		DOUBLE
2-1/2" (64 mm)	3-5/16" (84 mm)		WAFFLE

## Simpli-Flex® Ice Cream Cone Dispensers

Prevent breakage, protect from contamination and keep ice cream cones fresher with the Simpli-Flex® cone dispensers for cake, waffle and sugar cones with a 1-3/8" – 3-3/8" (35 - 86 mm) cone lip diameter. Simpli-Flex cone dispensers are completely self-adjusting, ensuring one-at-a-time dispensing. Simpli-Flex cone dispensers are available in heavy-duty, polished stainless steel or tough, gray tinted plastic. Dispenser mount options include wall, stand, in-counter or under-counter.

Model #	Description	Dimensions L x Dia inches (mm)	Case Qty.	Ship Wt. lbs./kgs.
1003854	ESF1002 spring loaded for medium to large cones (uses gasket # 1905842)	24 x 4 610 x 102	12	41/19
1003846	SF1002 stainless steel tube for medium to large cones (uses gasket # 1905842)	24 x 4 610 x 102	12	37/17
1003848	SF1002P plastic tube for medium to large cones (uses gasket # 1905842)	31 x 4 787 x 102	12	40/18
1003850	SF1015P plastic tube for small cones (uses gasket # 1905841)	19 x 3-1/8 483 x 79	12	30/14
1007710	SF1015P-30" plastic tube 30" long tube, for small cones (uses gasket # 1905841)	31 x 3-1/8 787 x 79	12	32/15



## Rotary Stands

Countertop rotating stands for cup, tubular lid and ice cream cone dispensers. Dispensers sold separately.

Model #	Description	Dimensions D x H x W inches (mm)	Case Qty.	Ship Wt. lbs./kgs.
1003860	1007-024; 4-sided stand	13 x 42 x 13 (330 x 1067 x 330)	1	7/3
1003863	1007-624; 6-sided stand	13 x 42 x 13 (330 x 1067 x 330)	1	7/3
1009646	1007-400; condiment caddy w/four 1-quart inserts	13 x 2 x 13 (330 x 51 x 330)	1	4/2





## Z-Stands

Countertop Z-stands for cup, lid and ice cream cone dispensers. Made of stainless steel, painted gray. Dispensers sold separately.

Model #	Description	Dimensions D x H x W inches (mm)	Case Qty.	Ship Wt. lbs./kgs.
<b>NSF</b> 1008213	1008-20Z for any 2 cup or lid dispensers	24 x 29 x 11 (610 x 737 x 279)	1	6/3
1003865	1008-30Z for any 3 cup or lid dispensers	24 x 29 x 11 (610 x 737 x 279)	1	6/3
1009316	1008-40Z for any 4 cup or lid dispensers	24 x 29 x 11 (610 x 737 x 279)	1	7/3
1003870	1008-50Z for any 5 cup or lid dispensers	24 x 29 x 12 (610 x 737 x 305)	1	7/3
1404429	22-1008-AB suction mounting kit (Not recommended for 1008-50Z)		1	1/5
1003871	1009 High Volume stand for any 8 cup or lid dispensers	23 x 33 x 11 (584 x 838 x 279)	1	16/7



## Grab-N-Go Cup Dispenser Kit

Designed for use at checkout registers to maximize and drive beverage sales at time of check out. Grab-N-Go Cup Dispenser Kits include a cup dispenser and mounting hardware to support four mounting options for attaching to walls, poles and counters. Installation instructions are included. Cup Dispensers and Poles are sold separately.

Model #	Description	Dimensions L x Dia inches (mm)	Case Qty.	Ship Wt. lbs./kgs.
<b>NSF</b> 1022589	Cup Dispensers: SF1005 with fountain drink decal	24 x 5 (610 x 127)	1	4/2
1022590	SF1005 with coffee decal	24 x 5 (610 x 127)	1	4/2
	Mounting Stands/Poles:			
1021984	Stand/Pole, painted red	30" L (762)	1	4/2
1022086	Stand/Pole, painted blue	30" L (762)	1	4/2



## Pull-Type Cup Dispensers

Adjustable stainless steel pull-type cup dispensers for wall or stand mounting.

Model #	Description	Dimensions L x Dia inches (mm)	Case Qty.	Ship Wt. lbs./kgs.
<b>NSF</b> 1008783	1013 (small cups)	15-1/2 x 3 (394 x 76)	12	27/12
1003700	1001 (medium cups)	23-1/8 x 3-5/8 (587 x 92)	12	27/12
1003713	1002 (medium cups)	23-1/8 x 4 (587 x 102)	12	32/15
1003721	1017 (large cups)	23-1/8 x 4-3/8 (587 x 111)	12	37/17
1003725	1018 (large cups)	23-1/8 x 5 (587 x 127)	12	40/18
1003730	1020 (extra large cups)	23-1/8 x 5-13/32 (587 x 137)	6	24/11
1003692	1010 stainless water cup dispenser	15-1/2 x 2-11/16 (394 x 68)	12	30/14
1003696	1015 stainless water cup dispenser	15-1/2 x 3 (394 x 76)	12	30/14
1011721	WCP1003AL plastic water cup dispenser clear tube w/almond head	15-1/2 x 3 (394 x 76)	24	30/14
1011720	WCP1003W plastic water cup dispenser clear tube w/white head	15-1/2 x 3 (394 x 76)	24	30/14



Dispenser Model #	Cup Lip Diameter Inches (mm)
1013	2-5/16 - 2-15/16 (59 - 75)
1010	2-5/16 - 2-11/16 (59 - 68)
1015	2-1/2 - 2-15/16 (64 - 75)
1001	2-3/4 - 3-3/8 (70 - 86)
1002	3-1/4 - 3-5/8 (83 - 92)
1017	3-1/2 - 4-1/16 (89 - 103)
1018	4 - 4-3/4 (102 - 121)
1020	4-1/2 - 5-1/16 (114 - 129)

### SELECTION CHART FOR ADJUSTABLE CUP DISPENSERS

Specifications subject to change without notice.  
All dimensions are for reference only.

See page 7 and above for optional mounting stands.

# MODULAR® DISPENSING SYSTEMS

## ELC Cup Dispensers

Spring-loaded ELC cup dispensers with stainless steel mounting collar for counter or cabinet mounting. Tube and collar are made of FDA-grade stainless steel.

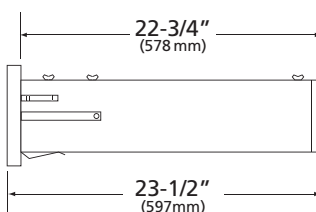
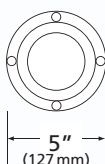


Model #	Description	Dimensions L x Dia inches (mm)	Case Qty.	Ship Wt. lbs./kgs.
1003755	ELC1010R (xsm cups)	23-1/2 x 2-11/16 (597 x 68)	12	30/14
1003761	ELC1015R (sm cups)	23-1/2 x 3 (597 x 76)	12	32/15
1003767	ELC1001R (med cups)	23-1/2 x 3-5/8 (597 x 92)	12	39/18
1003782	ELC1002R (med cups)	23-1/2 x 4 (597 x 102)	12	42/19
1003799	ELC1017R (lrg cups)	23-1/2 x 4-3/8 (597 x 111)	6	23/10
1003807	ELC1018R (lrg cups)	23-1/2 x 5 (597 x 127)	6	28/13
1003818	ELC1020R (xlrg cups)	23-1/2 x 5-13/32 (597 x 137)	6	30/14

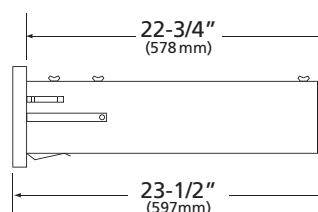
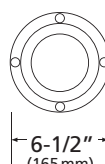
### ELC CUP DISPENSER MOUNTING CHART

MOUNTING HOLE inches/mm	MODEL NUMBER						
	ELC 1010	ELC 1015	ELC 1001	ELC 1002	ELC 1017	ELC 1018	ELC 1020
4-3/8 (112)	X	X	X	X			
5-1/2 (140)					X	X	
5-7/8 (149)							X

ELC 1010  
ELC 1015  
ELC 1001  
ELC 1002



ELC 1017  
ELC 1018  
ELC 1020



## Wire Cup Dispensers

This Wire Cup Dispenser is an affordable cup dispensing solution when counter space is at a minimum. Dispense up to five different sized paper, plastic or foam cups. Easy adjustment — simply twist side springs to adjust. Suction feet keep dispenser firmly in place. A top lid organizer is available and sold separately.

Model #	Description	Dimensions D x H x W inches (mm)	Case Qty.	Ship Wt. lbs./kgs.
1020857	Wire Cup Dispenser, 3 tier	18-1/4 x 19-1/4 x 5-7/8 (464 x 489 x 149)	1	5/2
1019971	Wire Cup Dispenser, 4 tier	18-1/4 x 23-3/4 x 5-7/8 (464 x 603 x 149)	1	6/3
1023374	Wire Cup Dispenser, 5 tier	18-1/4 x 29-1/2 x 5-7/8 (464 x 749 x 149)	1	7/3
1020372	Top Lid Organizer	21-11/16 (L) x 4-13/16 (W) (551 x 122)	1	2/1

## Air Pot Stations

A one-stop shop for your coffee or tea service setup. Vacuum-formed heavy-duty organizer keeps air pots, condiments, stir sticks and more together for quick and easy service. Each air pot station includes stainless steel drip trays and air pot risers. Available in double or single air pot size.

Model #	Description	Dimensions D x W inches (mm)	Case Qty.	Ship Wt. lbs./kgs.
1023361	Double Air Pot Station	12-1/2 x 25-1/4 (318 x 641)	1	8/4
1023359	Single Air Pot Station	12-1/2 x 16-1/2 (318 x 419)	1	5/2



## Countertop Adjustable Lid Dispensers

Stainless steel countertop lid dispensers with adjustable dividers for several size lids. Available in various widths and heights.

Model #	Description	Dimensions D x H x W inches (mm)	Case Qty.	Ship Wt. lbs./kgs.
1004054	L200-15 3 adjustable dividers	4-1/2 x 7 x 15-1/2 (114 x 178 x 394)	8	35/16
1004063	L212-15 Like the L200-15, but 12-1/2" (318 mm) tall	4-1/2 x 12-1/2 x 15-1/2 (114 x 318 x 394)	1	7/3
1004056	L200-19 4 adjustable dividers	4-1/2 x 7 x 19 (114 x 178 x 483)	6	37/17
1004064	L212-19 Like the L200-19, but 12-1/2" (318 mm) tall	4-1/2 x 12-1/2 x 19 (114 x 318 x 483)	1	9/4
1004061	L200-22 5 adjustable dividers	4-1/2 x 7 x 22 (114 x 178 x 559)	6	38/17
1004065	L212-22 Like the L200-22, but 12-1/2" (318 mm) tall	4-1/2 x 12-1/2 x 22 (114 x 318 x 559)	1	10/5
1004068	L200MB Mounting Bracket Kit to mount dispenser on fountain head or wall		1	2/1



Model # 1004061

Model # 1004065

## Tubular Adjustable Lid Dispensers

Stainless steel tubular lid dispensers with three adjustable dividers for several size lids. Lid dispensers can be wall or stand mounted.

Model #	Description	Dimensions L x Dia inches (mm)	Case Qty.	Ship Wt. lbs./kgs.
1011795	LO24 Maximum lid diameter is 4" (102 mm)	23-1/8 x 4-1/4 (587 x 108)	6	12/5
1011796	LO46 Maximum lid diameter is 5-1/4" (133 mm)	23-1/8 x 5-13/32 (587 x 137)	6	21/10
1012030	LO64 Maximum lid diameter is 5-7/8" (149 mm)	23-1/8 x 6-1/8 (587 x 156)	6	22/10



# MODULAR® DISPENSING SYSTEMS



## Domed Lid Organizer

Organizes beverage cup lids used for slushies, frozen drinks, etc. One-inch stainless steel base with rubber feet. Holds up to 200 domed lids. For on-counter or in-counter mounting.

Model #	Description	Dimensions D x H x W inches (mm)	Case Qty.	Ship Wt.
1019467	Domed Lid Organizer	6-1/2 x 11-1/4 x 21-3/4 (165 x 286 x 552)	1	4/2



## Straw Dispensers

Wrapped straw dispensers help reduce waste and organize space. Stainless steel dispensers.

Model #	Description	Dimensions inches (mm)	Case Qty.	Ship Wt.
1003989	ELC5006 for counter mount, large	5-1/2 (140) mounting hole	1	2/1
1003990	ELC9006 for counter mount, small	4-3/8 (111) mounting hole	1	1/5



Model # 1004005

## 5500 Dairy Creamer Dispensers

An insulated dispenser for chilled dairy creamer packets. Refreezable cold packs keep the creamer under 40°F (4°C) for up to eight hours. Available in brushed stainless steel or beige polyurethane finish. Holds approximately 300 creamer packets. Optional top coffee service organizer with two compartments for organizing sugar, sweetener, powdered creamer and stir sticks is available.

Model #	Description	Dimensions D x H x W inches (mm)	Case Qty.	Ship Wt. lbs./kgs.
1004005	5500-SS Dairy Creamer Stainless steel w/ 2 cold packs	15 x 11-5/8 x 6-5/8 (381 x 295 x 168)	1	7/3
1004002	5500 Dairy Creamer Painted beige w/ 2 cold packs	15 x 11-5/8 x 6-5/8 (381 x 295 x 168)	1	7/3
1004008	5600 Top Coffee Service Organizer	10 x 4-1/2 x 6-5/8 (254 x 114 x 168)	4	8/4
1904516	17-2500 White plastic stir stick insert	3 x 3-1/2 x 6-1/2 (76 x 89 x 165)	6	1/5
1904890	Refreezable Cold Pack		12	29/13



Model #1004002  
with 1004008



## 1200 High-Volume Condiment Dispenser

Four-compartment gravity-fed condiment dispenser for high-volume use. Holds up to 1500 condiment packets. Top-loading feature ensures product rotation. Simple to load and clean. Painted gray aluminum construction.



Model #	Description	Dimensions D x H x W inches (mm)	Case Qty.	Ship Wt. lbs./kgs.
1003993	1200 High-Volume Condiment Dispenser	24 x 26 x 8 (610 x 660 x 203)	1	22/10



## 6000 Condiment Dispensers

Four compartment condiment dispenser tray will mount on top of SF2100 Series Cabinets.

Model #	Description	Dimensions D x H x W inches (mm)	Case Qty.	Ship Wt. lbs./kgs.
1004012	6000 Condiment Dispenser in Aluminum	24 x 6 x 8 (610 x 152 x 203)	6	21/10
1010072	6000 Condiment Dispenser in Stainless Steel	24 x 6 x 8 (610 x 152 x 203)	6	21/10
1904508	White plastic quart insert	5-5/8 x 3 x 6 (142 x 76 x 150)	12	2/1
1904516	White plastic stir stick insert	3 x 3-1/2 x 6-1/2 (76 x 89 x 165)	6	1/5



## 9000 Condiment Dispenser

The 9000 Condiment Dispenser features nine 1-pint inserts inside a stainless steel body. Additional pint inserts are available. Ideal for organizing multiple condiment and coffee service packets.

Model #	Description	Dimensions D x H x W inches (mm)	Case Qty.	Ship Wt. lbs./kgs.
1004017	9000 Condiment Dispenser	19 x 5-5/8 x 12 (483 x 143 x 305)	1	7/3
1904512	52-1016 White plastic pint insert for 9000 dispenser Fits 2.7" x 5.3" (69 x 139 mm) mounting hole	3 x 3 x 5-5/8 (76 x 76 x 143)	12	1/5



Pint Insert #1904512



# MODULAR® DISPENSING SYSTEMS

## In-Counter/Counter Mount Napkin Dispensers

Stainless steel spring-loaded dispensers with latched faceplate for easy and secure closing. Mounts horizontally, vertically or diagonally in a counter or cabinet. Dispenses one napkin at a time and accommodates 250 - 500 napkins.

Model # 1010593  
(in-counter)



Model # 1003980  
(countertop)

Model #	Description	Dimensions D x H x W inches (mm)	Case Qty.	Ship Wt. lbs./kgs.
1003971	4000-C10 Holds 250 napkins	6-1/2 x 10-1/2 x 8-1/4 (165 x 267 x 210)	4	19/9
1010593	4000-C10N Holds 250 napkins	6-1/2 x 10-1/2 x 8-1/4 (165 x 267 x 210)	4	19/9
1012066	4000-C24 Holds 500 napkins	6-1/2 x 25 x 8-1/4 (165 x 635 x 210)	1	7/3
1007462	4000-TC7 Countertop model Holds 250 napkins	11 x 7-1/2 x 9 (279 x 191 x 229)	4	27/12
1003980	4000-SD9 Countertop model Holds 250 napkins w/top straw holder	11 x 9 x 9 (279 x 229 x 229)	4	27/12

## Stainless Steel Trash Chutes

Designed for in-counter applications, these one-piece trash chutes are manufactured of 22 gage, T-304 stainless steel with a highly polished lip flange. Available in 4", 6" and 9" diameter sizes.



Model #	Description	Dimensions inches (mm)	Case Qty.	Ship Wt. lbs./kgs.
1920105	4" Trash Chute	4-1/2 H (114) Hole Cutout: 4-3/16 - 4-7/32 (106 - 107)	1	1/5
1920106	6" Trash Chute	5 H (127) Hole Cutout: 5-17/32 - 5-9/16 (140 - 141)	1	1/5
1920107	9" Trash Chute	2-1/4 H (57) Hole Cutout: 9-1/16 - 9-3/32 (230 - 231)	1	1/5

## INDEX

Simpli-Flex® Gasket & Dispensing System .....	Pg. 1
Simpli-Flex® 2000 Products .....	Pg. 2
Combination Cabinet Dispensers .....	Pg. 3
Simpli-Flex® Cabinets & Cup Dispensers.....	Pgs.4-6
Ice Cream Cone Dispensers.....	Pg. 7
Mounting Stands.....	Pgs. 7-8
Grab-N-Go Cup Dispenser Kit .....	Pg. 8
Adjustable Cup Dispensers .....	Pgs.8-9
Wire Cup Dispensers.....	Pg.9
Air Pot Stations .....	Pg.10
Lid, Straw, Creamer & Condiment Dispensers...	Pgs.10-12
Napkin Dispensers .....	Pg.13
Stainless Steel Trash Chutes .....	Pg.13

Tomlinson Industries is  
a recipient of the  
President's E-Star Award  
for exporting excellence.



Most Tomlinson  
products have  
been certified by  
NSF International.



### LIMITED WARRANTY

We guarantee to the original purchaser of each Tomlinson product that any part thereof which proves to be defective in material or workmanship within one year – unless otherwise specified – of the date of shipment will be repaired or a replacement part furnished F.O.B. our factory. Warranty will not apply if our examination shows product to be defective as the result of negligence, abuse, misapplication or alteration by other than ourselves.

Tomlinson will not be responsible for unauthorized field service. Contact factory for instructions.

**TERMS:** Net 30 days, F.O.B. plant, Cleveland, Ohio U.S.A. Minimum order requirement is \$100.00 net.

**RETURNS:** Return of merchandise requires an RMA number. Authorized returns are subject to handling and re-stocking charges of 15%. Items returned to factory must have transportation charges prepaid. Custom items are not returnable.

**FOR RESALE ONLY:** Prices and specifications subject to change without notice. We reserve the right to correct printing errors.



13700 Broadway  
Cleveland, OH 44125-1992  
Phone: 216-587-3400, Ext. 224  
FAX: 216-587-6192

[www.tomlinsonind.com](http://www.tomlinsonind.com)

*World Class, Worldwide*