

Strike Plates

- Galvanized steel strike plates for use with magnetic push/touch latches.
- Zinc finish.
- Recommended screw is WW40205, (screws not included).

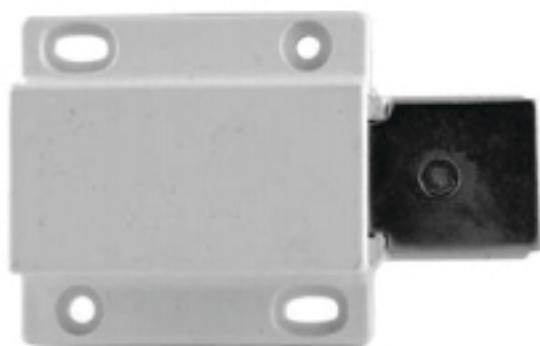
Packing: 50 each per box.

Sold In: Both broken and full box quantities.

Discount available for full box orders.



| Item# | Type | Dimensions | Box Qty |
|---------|-------|---------------------------------------|---------|
| WY9460R | Round | 15mm Diameter, 1.5mm thick | 50 |
| WY9460S | Oval | 35mm length x 12mm width, 1.5mm thick | 50 |



Magnetic Push/Touch Latches

Value Priced

- Spring-loaded mechanism automatically pushes door open, when pushed in.
- Strike plate not included.

Packing: 50 each per box.

Sold In: Both broken and full box quantities.

Discount available for full box orders.



| Item # | Color | Throw Length | Type | Latch Dimensions |
|-------------|-------|--------------|------------------|-----------------------------|
| FRPB9461-WH | White | 7/16" | Rectangle/Single | 1-11/16"L x 1-5/8"W x 1/2"H |



Magnetic Push/Touch Latches

Value Priced

- Spring-loaded mechanism automatically pushes door open, when pushed in.
- Open cabinet doors with a single touch.
- Single door and double door options available in white and black.
- Strike plates and screws included.

Packing: As shown below.

Sold In: Both broken and full box quantities.

Discount available for full box orders.



| | Item # | Color | Throw Length | Type | Latch Dimensions (Length x Width x Height) | Catch Dimensions (Length x Width) | Box Qty |
|---|---------------|-------|--------------|--------|--|-----------------------------------|---------|
| A | FRPB9461R-BLP | Black | 7/16" | Single | 1-5/16"L x 1-1/8"W x 11/16"H | 1-1/16"L x 1/2"W | 100 |
| | FRPB9461R-WHP | White | 7/16" | Single | 1-5/16"L x 1-1/8"W x 11/16"H | 1-1/16"L x 1/2"W | 100 |
| B | FRPB9462R-BLP | Black | 3/8" | Double | 1-5/16"L x 2-1/4"W x 5/8"H | 1-3/8"L x 1/2"W | 50 |
| | FRPB9462R-WHP | White | 3/8" | Double | 1-5/16"L x 2-1/4"W x 5/8"H | 1-3/8"L x 1/2"W | 50 |