

UC-NRLF



\$C 199 935

DETAILS
TO WHICH
STANDARD HARDWARE
CAN BE APPLIED



E. R. BUTLER & Co.
Research Library

DETAILS

TO WHICH

STANDARD HARDWARE

CAN BE APPLIED

XB
6
13277

60969817

Copyright, 1917,
by
W. R. Hill, Trustee.

Drawings prepared by Frank M. Snyder, Architect,
New York.

RUSH SPECIAL
CLASS 1 2
~~PB 1/4BD BUCK~~
CAT FOR
ENVIRONMENT

TH
2270
D4
Cop. 2
ENVI

FOREWORD

THROUGH long study of the requirements of Architects in reference to Builders' Hardware and Locks, certain standards of size and spacing have been established and recognized by Architects and adopted by Manufacturers.

They have felt the necessity for a series of easy reference details, clearly fixing the dimensions to which Standard Hardware can be applied, and it is with the view and desire of co-operating with Architects to the end of a quicker, less expensive and more satisfactory service, that, after a great deal of care and consideration, this book has been issued.

The information given covers the minimum requirements for hardware for the various types of doors and windows that have become standard in the class of work in which they are used. It is not intended to suggest any architectural or constructional design; the sole purpose being to fix required dimensions.

THE FOLLOWING ARE
THE HARDWARE MANUFACTURERS
UNDER WHOSE AUSPICES
THESE DETAILS ARE ISSUED

Barrows Lock Co., Lockport, Ill.
Chantrell Hardware and Tool Co., Reading, Pa.
P. and F. Corbin, New Britain, Conn.
The Lockwood Mfg. Co., South Norwalk, Conn.
Norwalk Lock Co., South Norwalk, Conn.
The Peck, Stow and Wilcox Co., Cleveland, O.
Penn Hardware Co., Reading, Pa.
Russell and Erwin Mfg. Co., New Britain, Conn.
Sager Lock Co., North Chicago, Ill.
Sargent and Company, New Haven, Conn.
The Taylor and Boggis Foundry Co., Cleveland, O.
The Yale and Towne Mfg. Co., New York.

THOMAS F. NOLAN, F. A. I. A.
PROFESSOR OF ARCHITECTURAL CONSTRUCTION
UNIVERSITY OF PENNSYLVANIA
PHILADELPHIA

As Chairman of the Committee on Materials and Methods of the American Institute of Architects, I am glad to have this opportunity of expressing approval of this much desired publication.

Yours very truly,

Thomas Nolan

Professor Nolan also approved the size of these plates, it being in accordance with the recommendation of The American Institute of Architects.

DETAILS FOR STANDARD HARDWARE

SINGLE ENTRANCE AND VESTIBULE DOORS

WITH FLAT FRONTS: NOT BEVELED

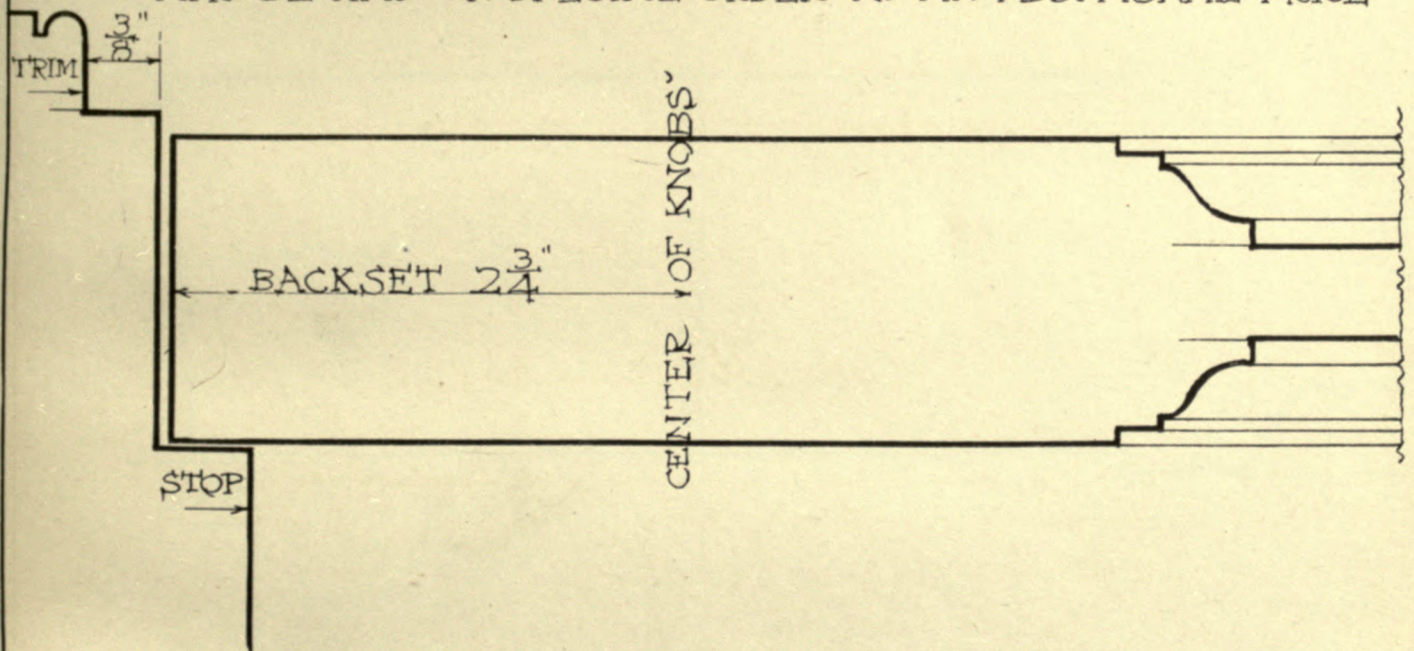
USING CYLINDER OR BITTED KEY LOCKS

REGULAR BACKSET $2\frac{3}{4}$ "

FLAT FRONT LOCKS WITH $2\frac{3}{4}$ " BACKSETS
ARE USUALLY CARRIED IN STOCK

CYLINDER LOCKS MAY BE HAD IN OTHER BACKSETS
ON SPECIAL ORDER: AT AN ADDITIONAL PRICE

FOR THICKER DOORS LOCKS WITH BEVELED FRONTS
MAY BE HAD ON SPECIAL ORDER AT AN ADDITIONAL PRICE



DRAWING IS FULL SIZE

PLATE NO 1

DETAILS FOR STANDARD HARDWARE

SINGLE ENTRANCE AND VESTIBULE DOORS

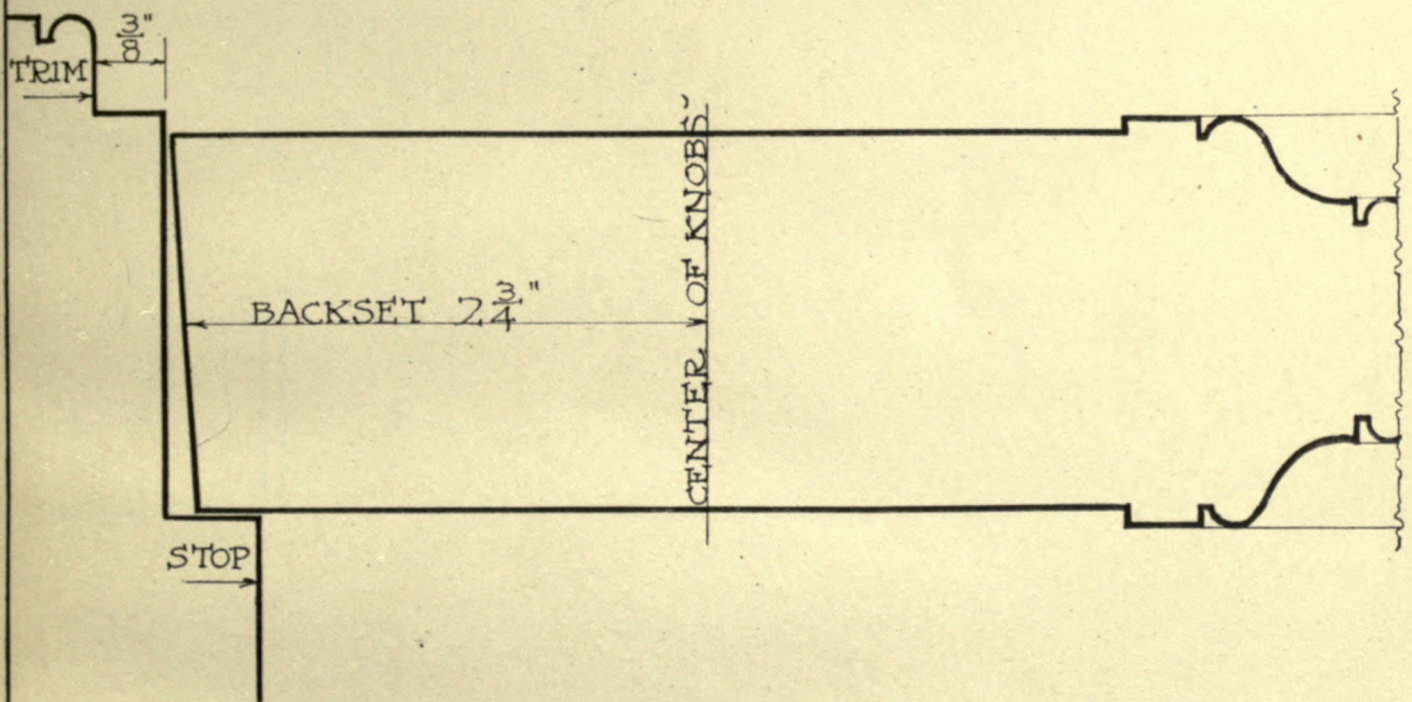
WITH BEVELED FRONT

USING CYLINDER LOCK

FRONT BEVELED $\frac{1}{8}$ " IN 2"

REGULAR BACKSET $2\frac{3}{4}$ "

OTHER BACKSETS MAY BE HAD ON SPECIAL ORDER
AT AN ADDITIONAL PRICE



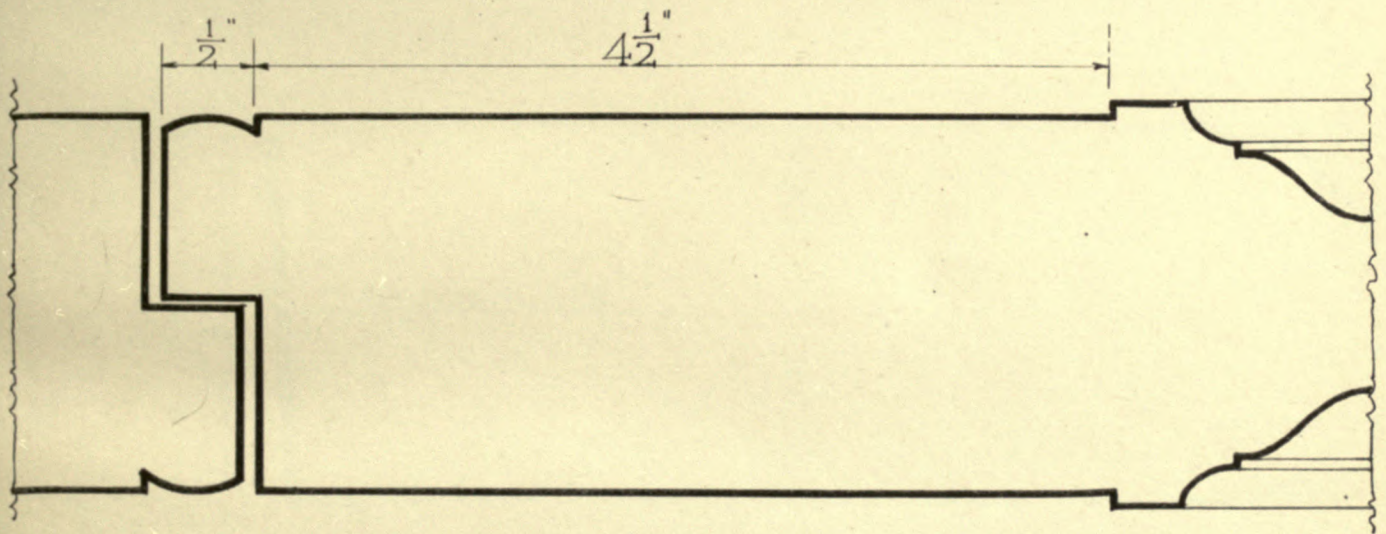
DRAWING IS FULL SIZE

PLATE NO 2

DETAILS FOR STANDARD HARDWARE

DOUBLE ENTRANCE AND VESTIBULE DOORS[~] WITH RABBETED MEETING STILES[~] USING CYLINDER LOCK[~]

FOR LOCKS WITH STANDARD BACKSETS[~]
STILES SHOULD BE NOT LESS THAN
 $4\frac{1}{2}$ " ON NARROW SIDE[~]



DRAWING IS FULL SIZE[~]

PLATE NO[~] 3[~]

DETAILS FOR STANDARD HARDWARE

DOUBLE ENTRANCE AND VESTIBULE DOORS

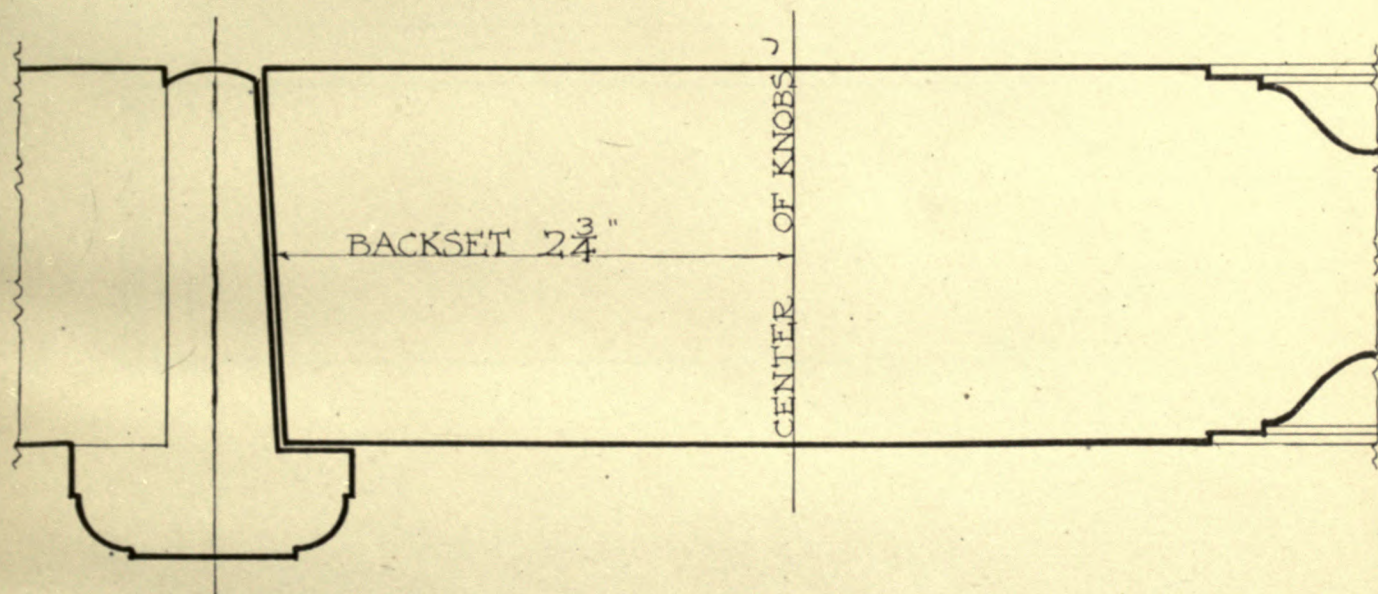
WITH FLAT ASTRAGAL MEETING STILES

USING CYLINDER LOCK

FRONT BEVELED $\frac{1}{8}$ " IN 2"

REGULAR BACKSET $2\frac{3}{4}$ "

OTHER BACKSETS MAY BE HAD ON SPECIAL ORDER
AT AN ADDITIONAL PRICE



DRAWING IS FULL SIZE

PLATE NO 4

DETAILS FOR STANDARD HARDWARE

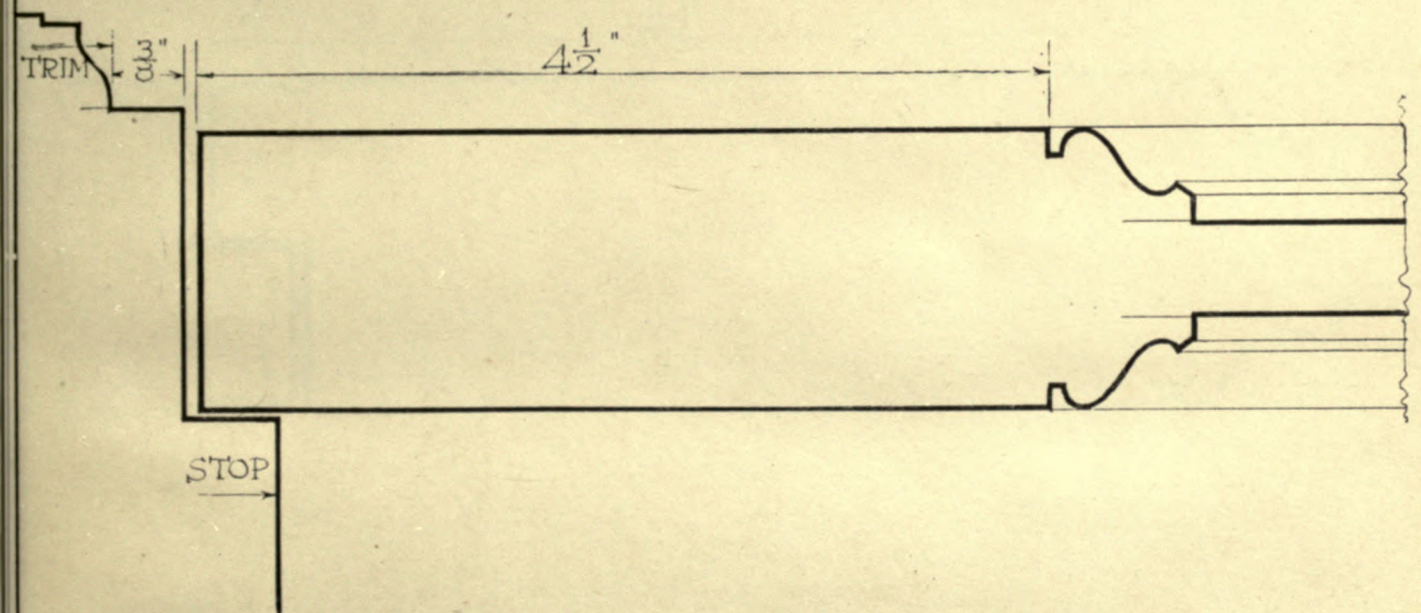
SINGLE INTERIOR DOOR

WITH FLAT FRONT : NOT BEVELED

USING BITTED KEY LOCK

FOR LOCKS WITH STANDARD BACKSETS
STILES SHOULD BE NOT LESS THAN $4\frac{1}{2}$ "

FOR THICKER DOORS ~ LOCKS WITH BEVELED FRONTS
MAY BE HAD ON SPECIAL ORDER ~ AT AN ADDITIONAL PRICE



DRAWING IS FULL SIZE

PLATE NO 5

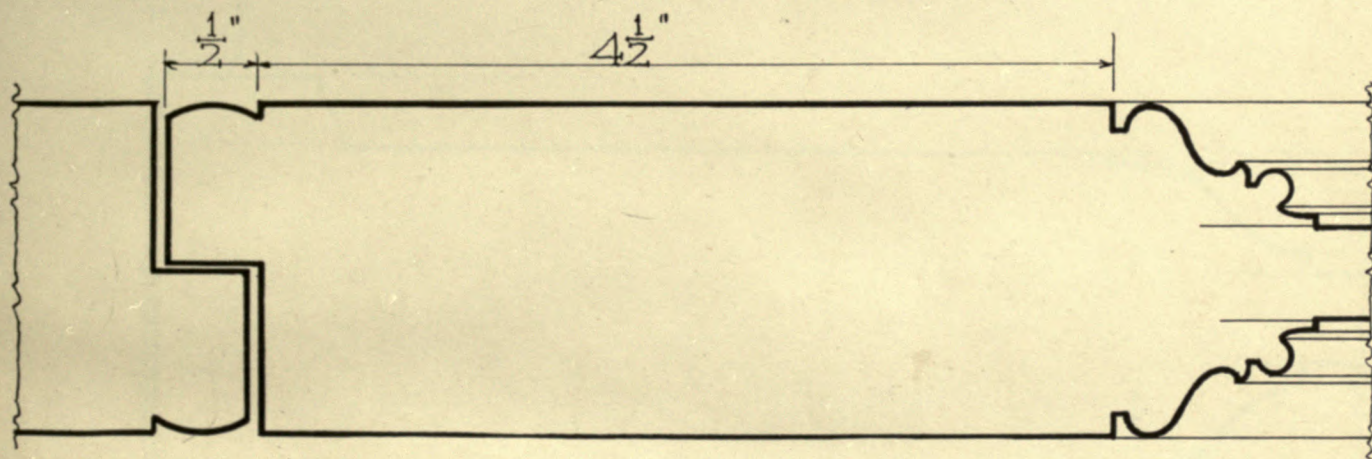
DETAILS FOR STANDARD HARDWARE

DOUBLE INTERIOR DOORS °

WITH RABBETED MEETING STILES °

USING BITTED KEY LOCK °

FOR LOCKS WITH STANDARD BACKSETS
STILES SHOULD BE NOT LESS THAN
 $4\frac{1}{2}$ " ON NARROW SIDE °



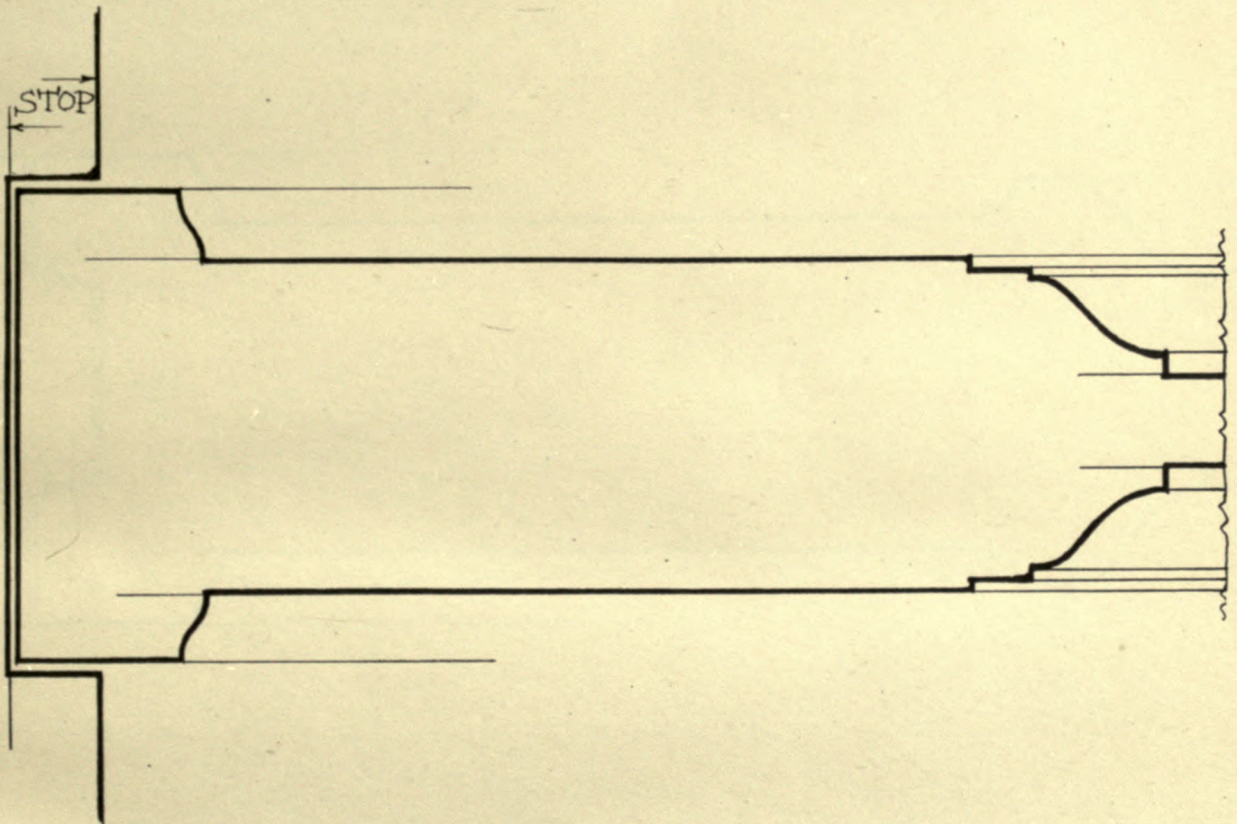
DRAWING IS FULL SIZE °

PLATE NO° 6 °

DETAILS FOR STANDARD HARDWARE

SINGLE SLIDING DOOR ° WITH FLAT FRONT °

THE STILE °AS SHOWN° IS SUITABLE
FOR LOCK WITH STANDARD BACKSET °



DRAWING IS FULL SIZE °

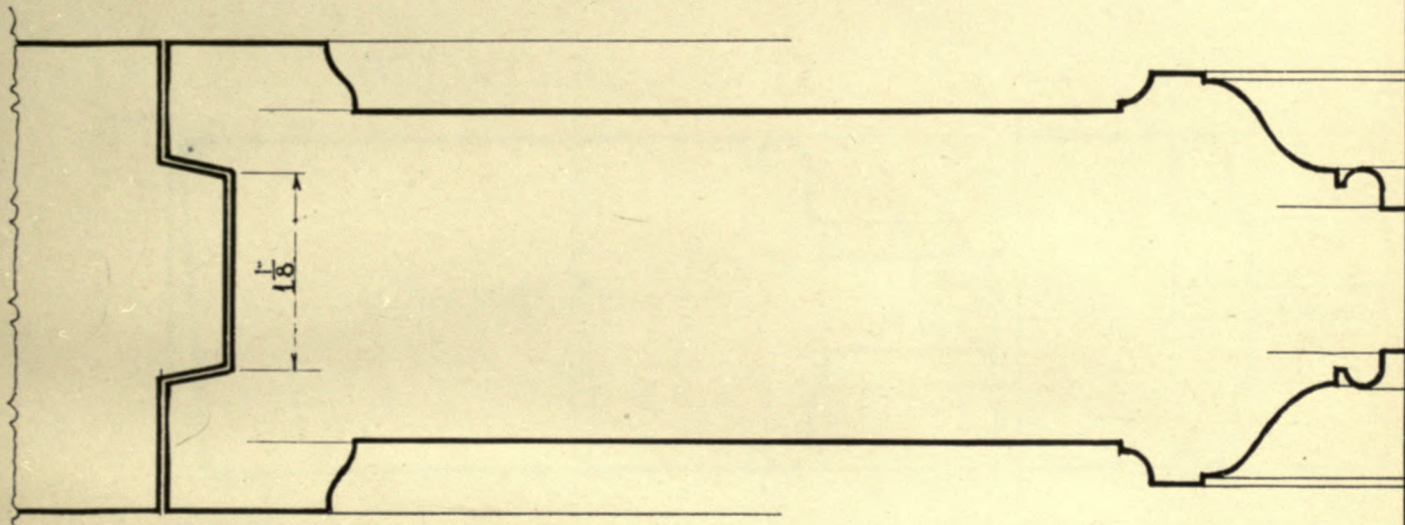
PLATE NO ° 7 °

DETAILS FOR STANDARD HARDWARE

DOUBLE SLIDING DOORS

WITH FLAT ASTRAGAL MEETING STILES

THE STILE "AS SHOWN" IS SUITABLE
FOR LOCK WITH STANDARD BACKSET



DRAWING IS FULL SIZE

PLATE NO 8

DETAILS FOR STANDARD HARDWARE

SINGLE NARROW STILE DOOR

WITH BEVELED FRONT

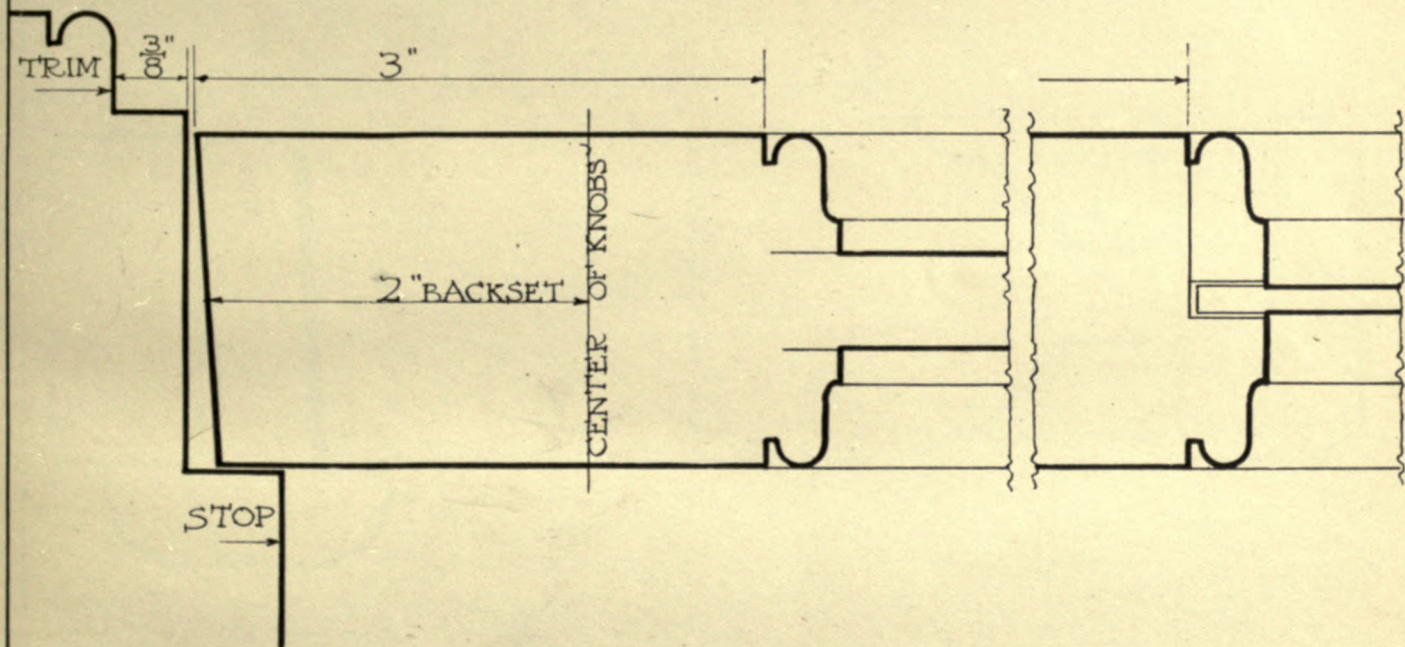
USING CYLINDER LOCK

FRONT BEVELED $\frac{1}{8}$ " IN 2"

REGULAR BACKSET 2"

THE STILES SHOULD BE NOT LESS THAN 3"

NARROWER BACKSETS MAY BE HAD ON SPECIAL ORDER AT AN ADDITIONAL PRICE



DRAWING IS FULL SIZE

PLATE NO 9

DETAILS FOR STANDARD HARDWARE

DOUBLE NARROW STILE DOORS

WITH FLAT ASTRAGAL MEETING STILES

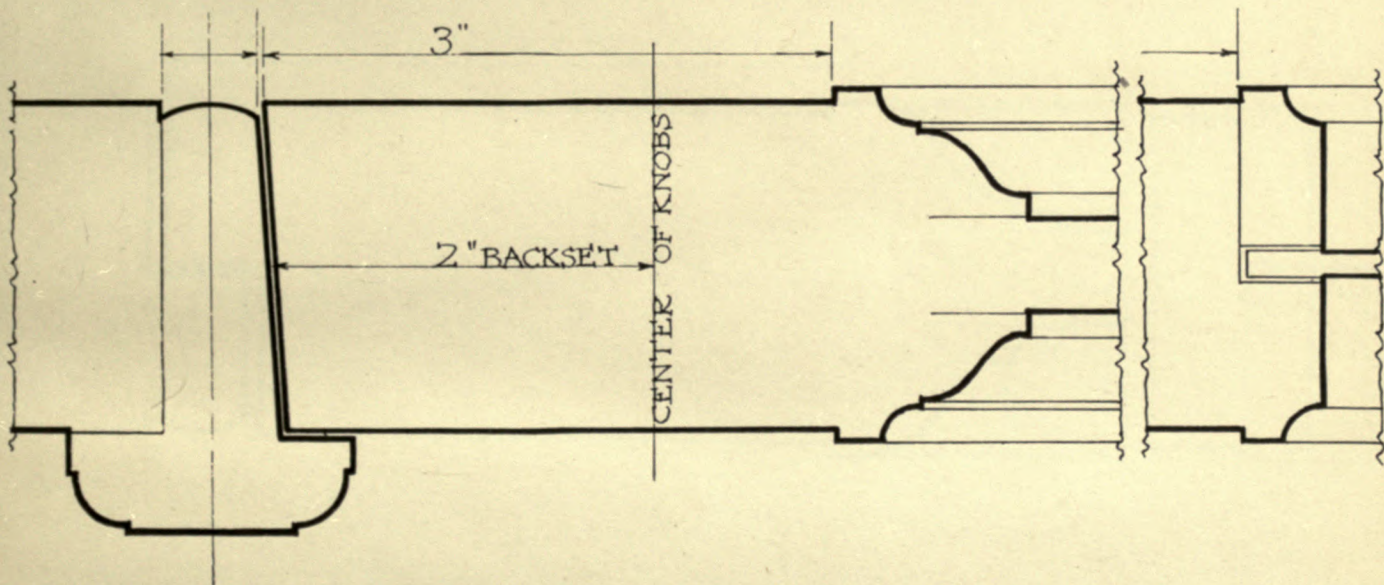
USING CYLINDER LOCK

FRONT BEVELED $\frac{1}{8}$ " IN 2"

REGULAR BACKSET 2"

THE STILES SHOULD BE NOT LESS THAN 3"

NARROWER BACKSETS MAY BE HAD ON SPECIAL ORDER AT AN ADDITIONAL PRICE



DRAWING IS FULL SIZE

PLATE NO 10

DETAILS FOR STANDARD HARDWARE

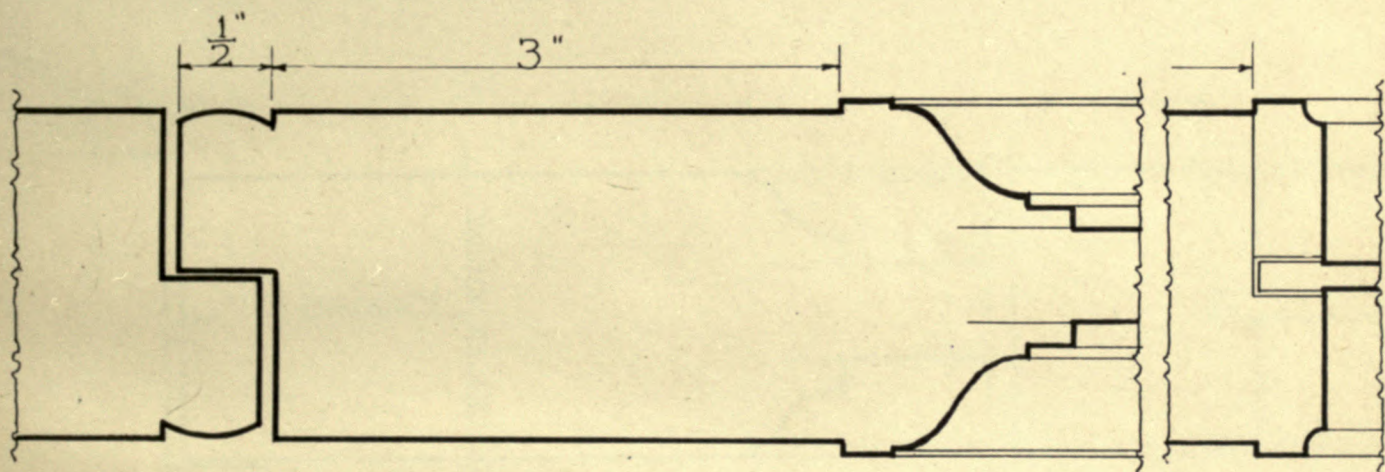
DOUBLE NARROW STILE DOORS ~

WITH RABBETED MEETING STILES ~

USING CYLINDER LOCK ~

THE STILES SHOULD BE NOT LESS THAN 3" ~
ON NARROW SIDE ~

LOCKS FOR NARROWER STILES MAY BE HAD ON
SPECIAL ORDER ~ AT AN ADDITIONAL PRICE ~



DRAWING IS FULL SIZE ~

PLATE NO ~11~

DETAILS FOR STANDARD HARDWARE

SINGLE NARROW STILE DOOR ~

WITH FLAT FRONT ~ NOT BEVELED ~

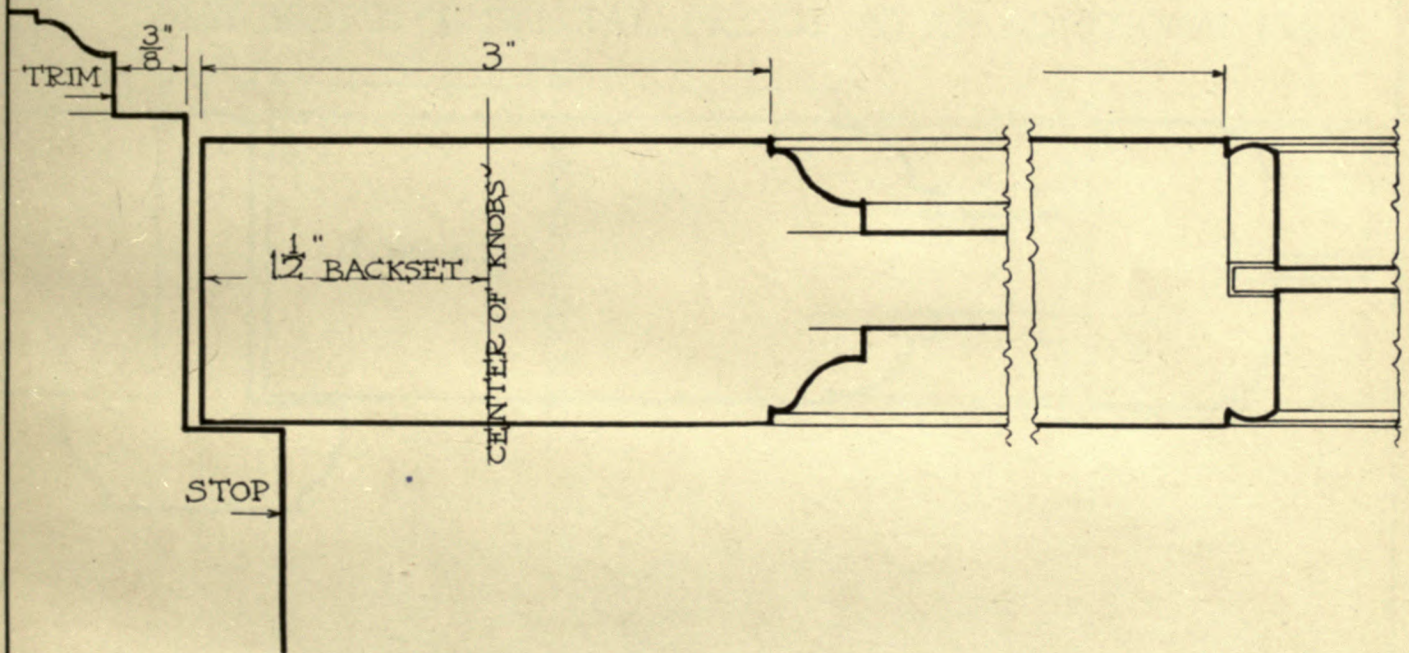
USING BITTED KEY LOCK ~

REGULAR BACKSET $1\frac{1}{2}$ " ~

THE STILES SHOULD BE NOT LESS THAN 3" ~

OTHER BACKSETS MAY BE HAD ON SPECIAL
ORDER ~ AT AN ADDITIONAL PRICE ~

FOR THICKER DOORS ~ LOCKS WITH BEVELED FRONTS ~
MAY BE HAD ON SPECIAL ORDER ~ AT AN ADDITIONAL PRICE ~



DRAWING IS FULL SIZE ~

PLATE NO ~ 12 ~

DETAILS FOR STANDARD HARDWARE

DOUBLE NARROW STILE DOORS~

WITH FLAT ASTRAGAL MEETING STILES~

USING BITTED KEY LOCK~

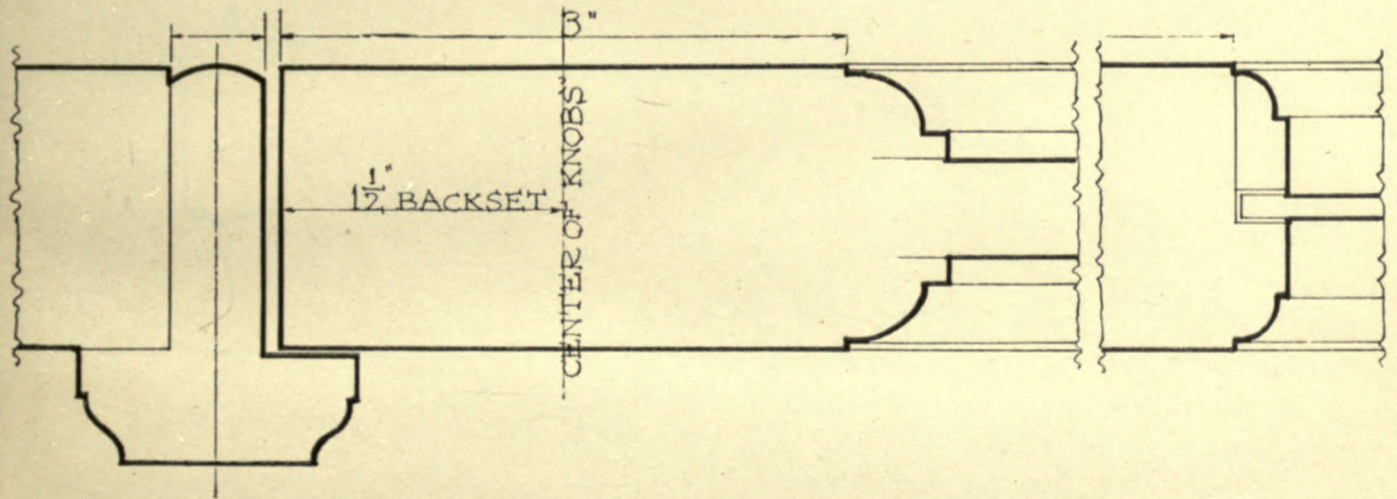
WITH FLAT FRONT ~ NOT BEVELED~

REGULAR BACKSET $1\frac{1}{2}$ " ~

THE STILES SHOULD BE NOT LESS THAN 3" ~

OTHER BACKSETS MAY BE HAD ON SPECIAL
ORDER ~ AT AN ADDITIONAL PRICE ~

FOR THICKER DOORS~ LOCKS WITH BEVELED FRONTS~
MAY BE HAD ON SPECIAL ORDER ~AT AN ADDITIONAL PRICE~



DRAWING IS FULL SIZE~

PLATE NO~13~

DETAILS FOR STANDARD HARDWARE

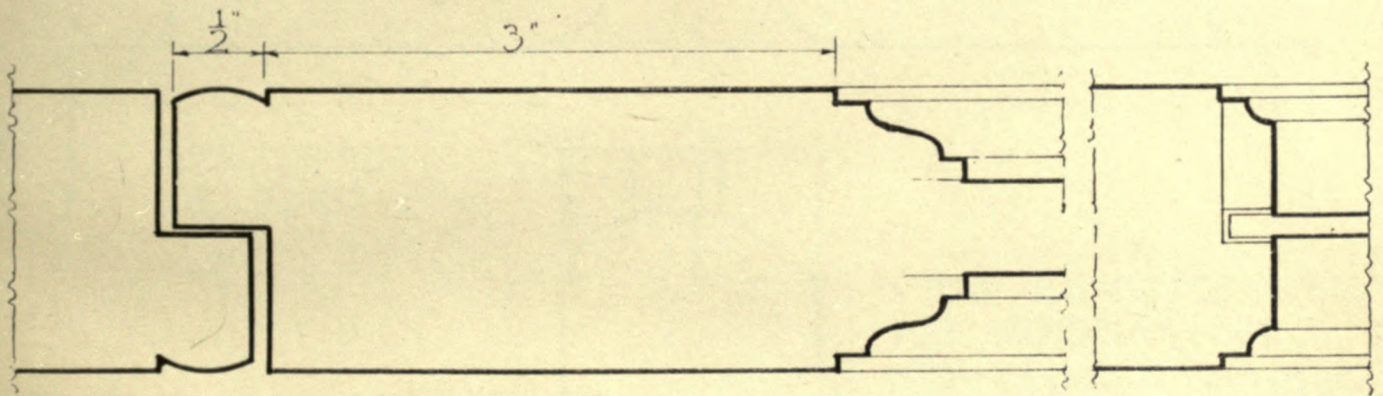
DOUBLE NARROW STILE DOORS ~

WITH RABBETED MEETING STILES ~

USING BITTED KEY LOCK ~

THE STILES SHOULD BE NOT LESS THAN 3" ~
ON NARROW SIDE ~

LOCKS FOR NARROWER STILES MAY BE HAD ON
SPECIAL ORDER ~ AT AN ADDITIONAL PRICE ~



DRAWING IS FULL SIZE ~

PLATE NO ~ 14 ~

PLATE NO^o 15^o

DETAILS FOR STANDARD HARDWARE

SINGLE CASEMENT SASH OPENING OUT

USING RIM OR MORTISE CASEMENT FASTENER
OR TURNBUCKLE AND ADJUSTER

FOR SASH NOT OVER 4'0" HIGH

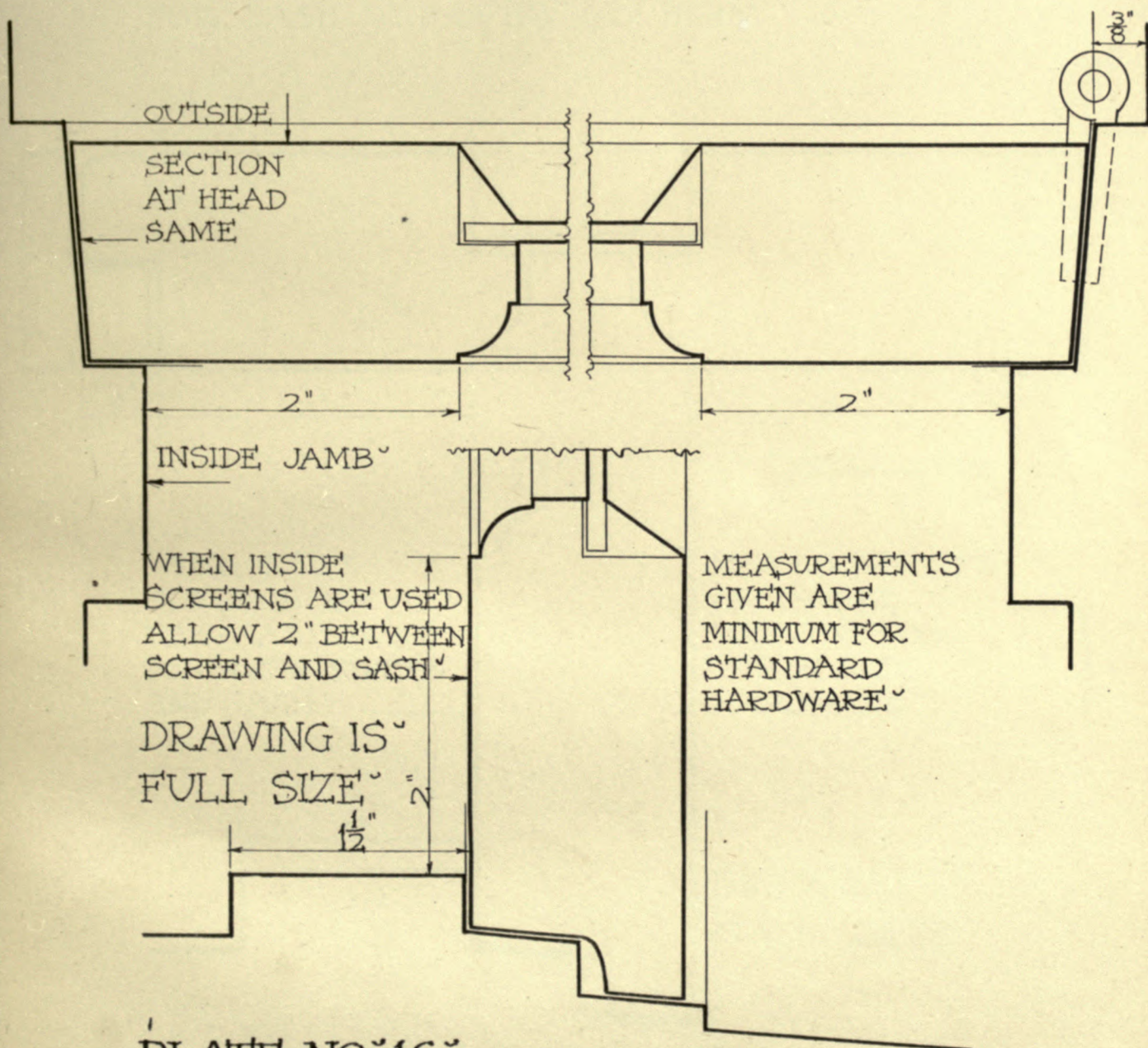


PLATE NO 16

PLATE NO^y 17^y

PLATE NO "18"

DETAILS FOR STANDARD HARDWARE

DOUBLE CASEMENT SASH OPENING OUT
WITH FLAT ASTRAGAL MEETING STILES
USING RIM OR MORTISE CASEMENT FASTENER
OR TURNBUCKLE AND ADJUSTERS

FOR SASH NOT OVER 4'0" HIGH

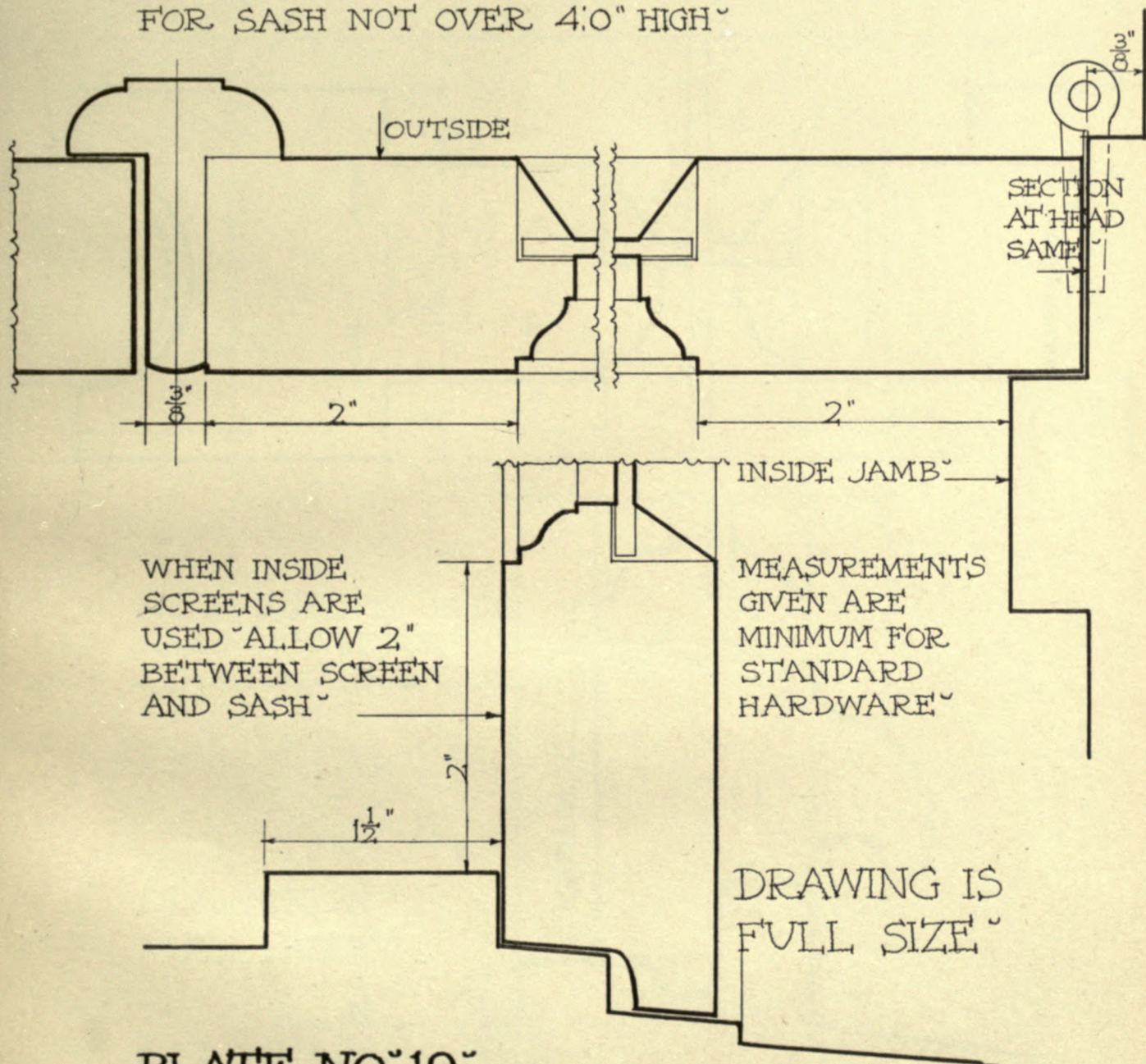
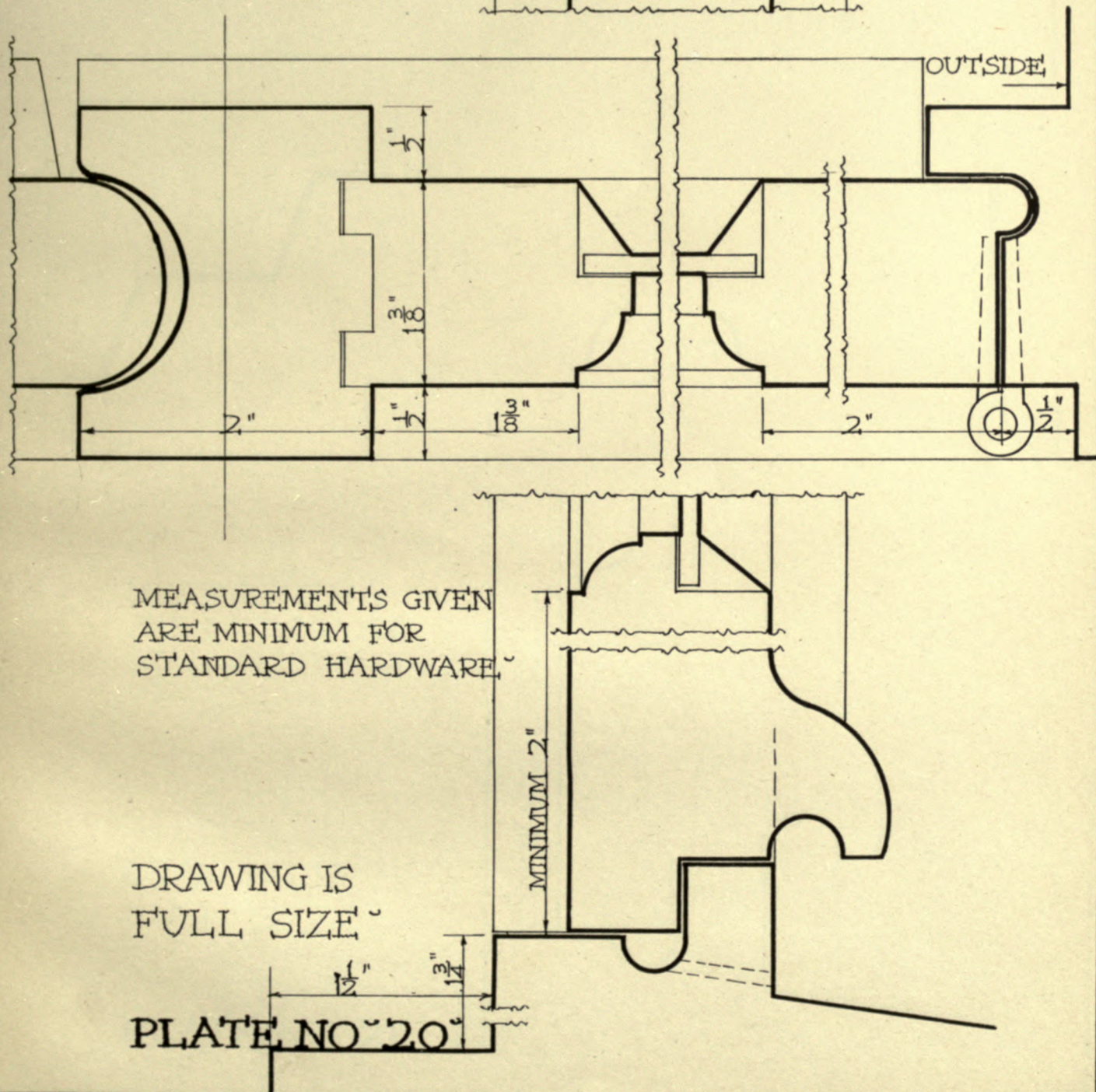


PLATE NO 19

DETAILS FOR STANDARD HARDWARE

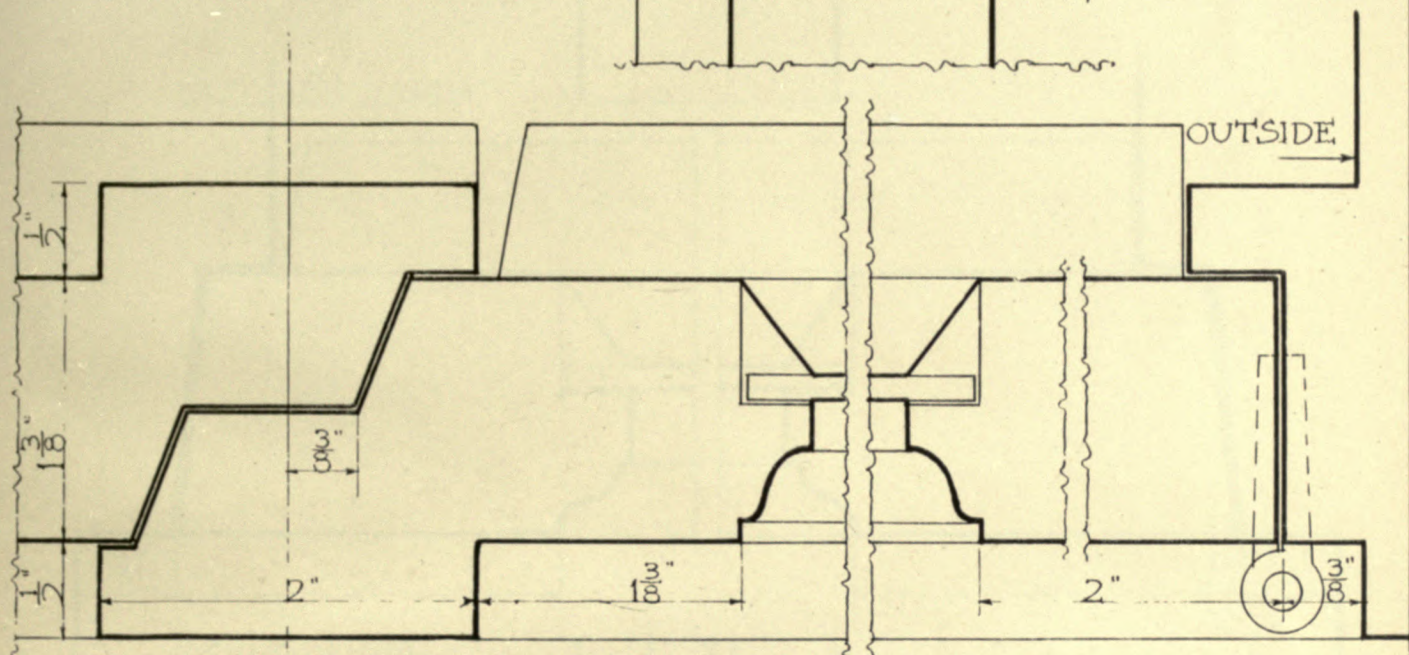
DOUBLE CASEMENT SASH OPENING IN
WITH FRENCH ASTRAGAL MEETING STILES
USING ESPAGNOLETTE BOLT AND ADJUSTERS



DETAILS FOR STANDARD HARDWARE

DOUBLE CASEMENT SASH OPENING IN

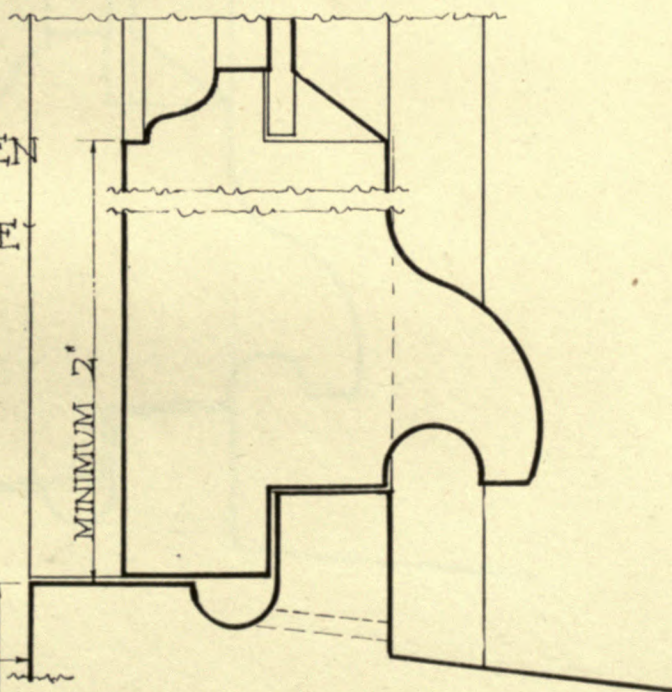
WITH RABBETED ASTRAGAL MEETING STILES
USING ESPAGNOLETTE BOLT AND ADJUSTERS



MEASUREMENTS GIVEN
ARE MINIMUM FOR
STANDARD HARDWARE

DRAWING IS
FULL SIZE

PLATE NO 21



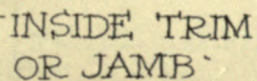
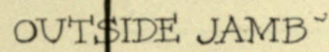
SINGLE CASEMENT SASH OPENING IN

USING CREMONE BOLT AND ADJUSTER

SINGLE CASEMENT SASH OPENING IN

USING CREMONE BOLT AND ADJUSTER

USING CREMONE BOLT AND ADJUSTER

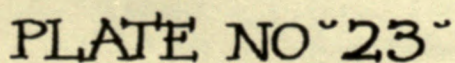


MEASUREMENTS
GIVEN ARE
MINIMUM FOR
STANDARD
HARDWARE ~

DRAWING IS
FULL SIZE

PLATE NO^o 22^o

USING CREMONE BOLT AND ADJUSTER

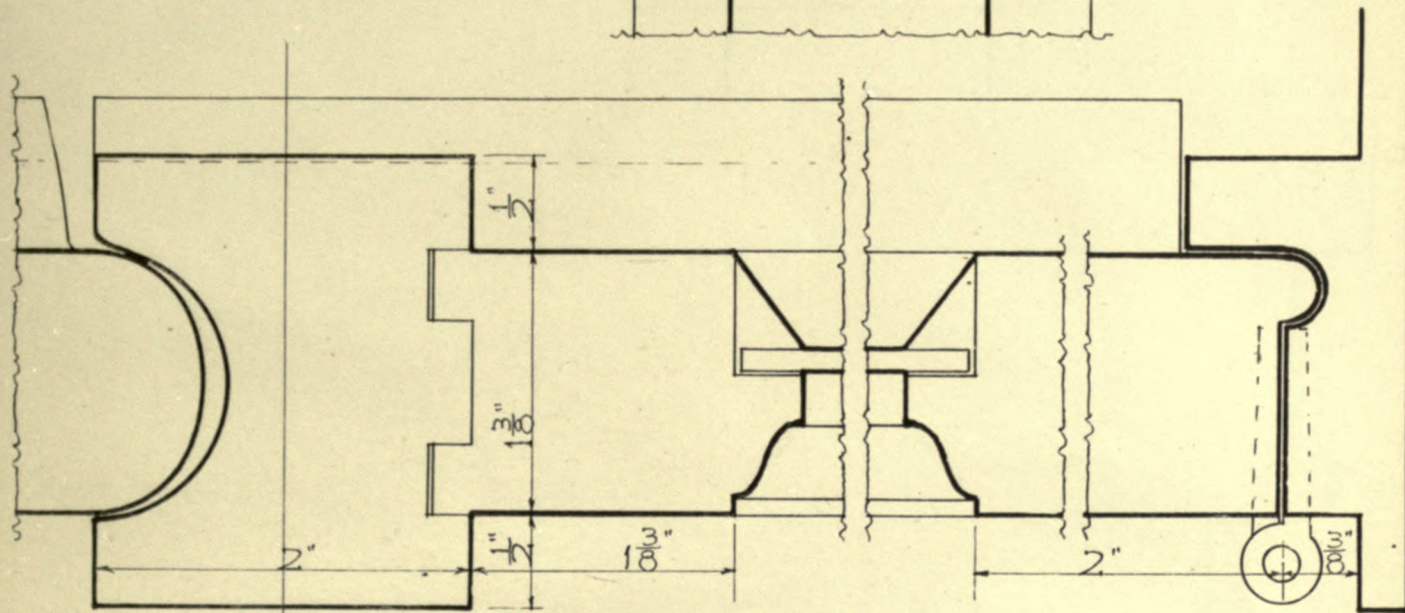


DETAILS FOR STANDARD HARDWARE

DOUBLE CASEMENT SASH OPENING IN

WITH FRENCH ASTRAGAL MEETING STILES

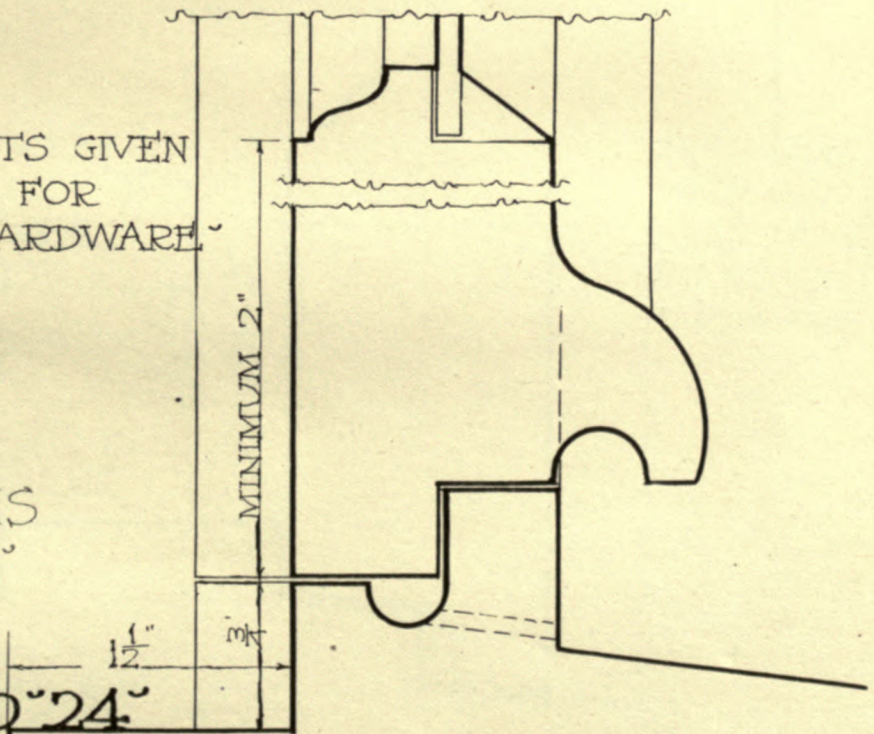
USING CREMONE BOLT AND ADJUSTERS



MEASUREMENTS GIVEN
ARE MINIMUM FOR
STANDARD HARDWARE

DRAWING IS
FULL SIZE

PLATE NO 24



DETAILS FOR STANDARD HARDWARE

DOUBLE CASEMENT SASH OPENING OUT
WITH FRENCH ASTRAGAL MEETING STILES
USING CREMONE BOLT AND ADJUSTERS

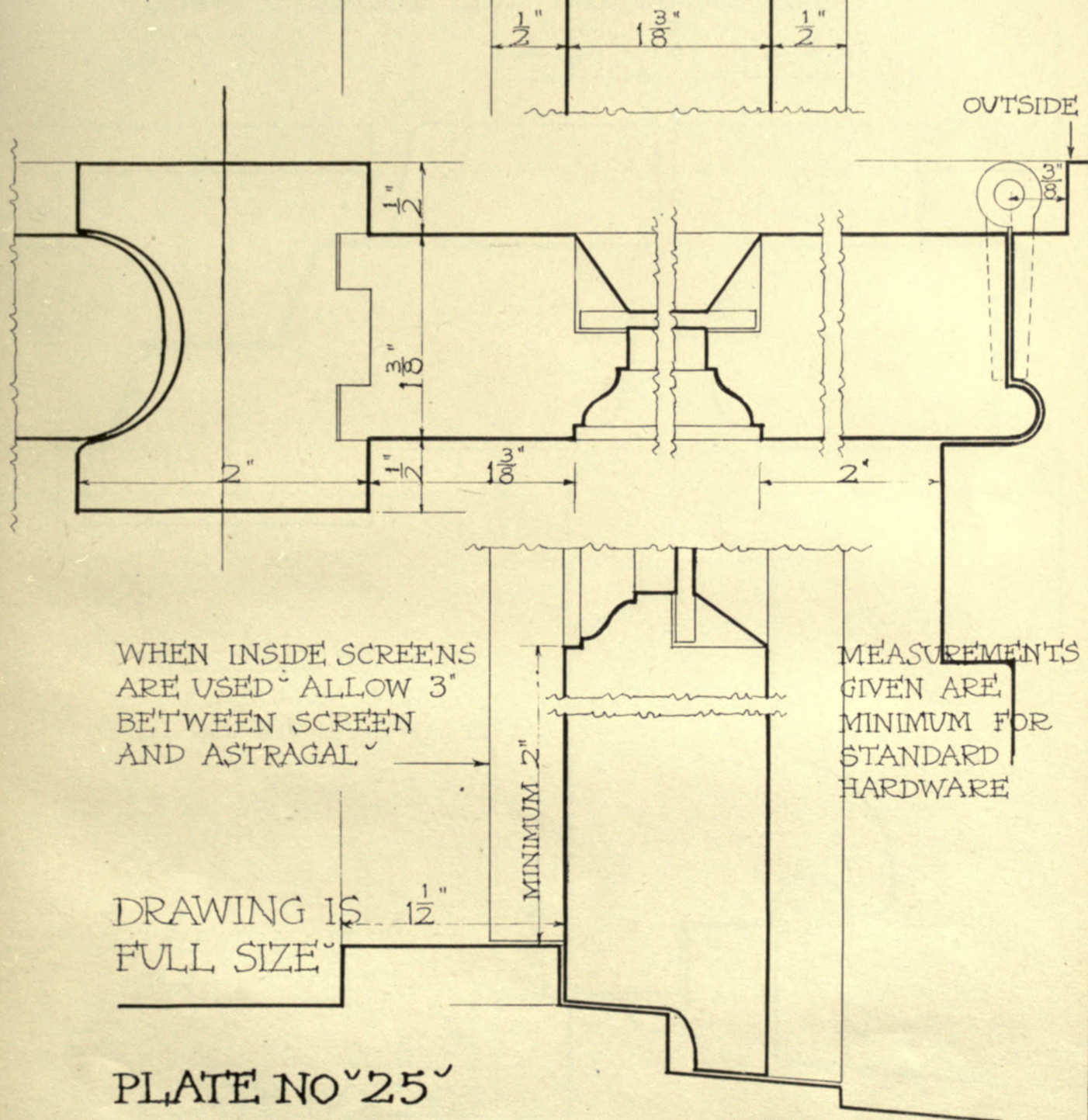
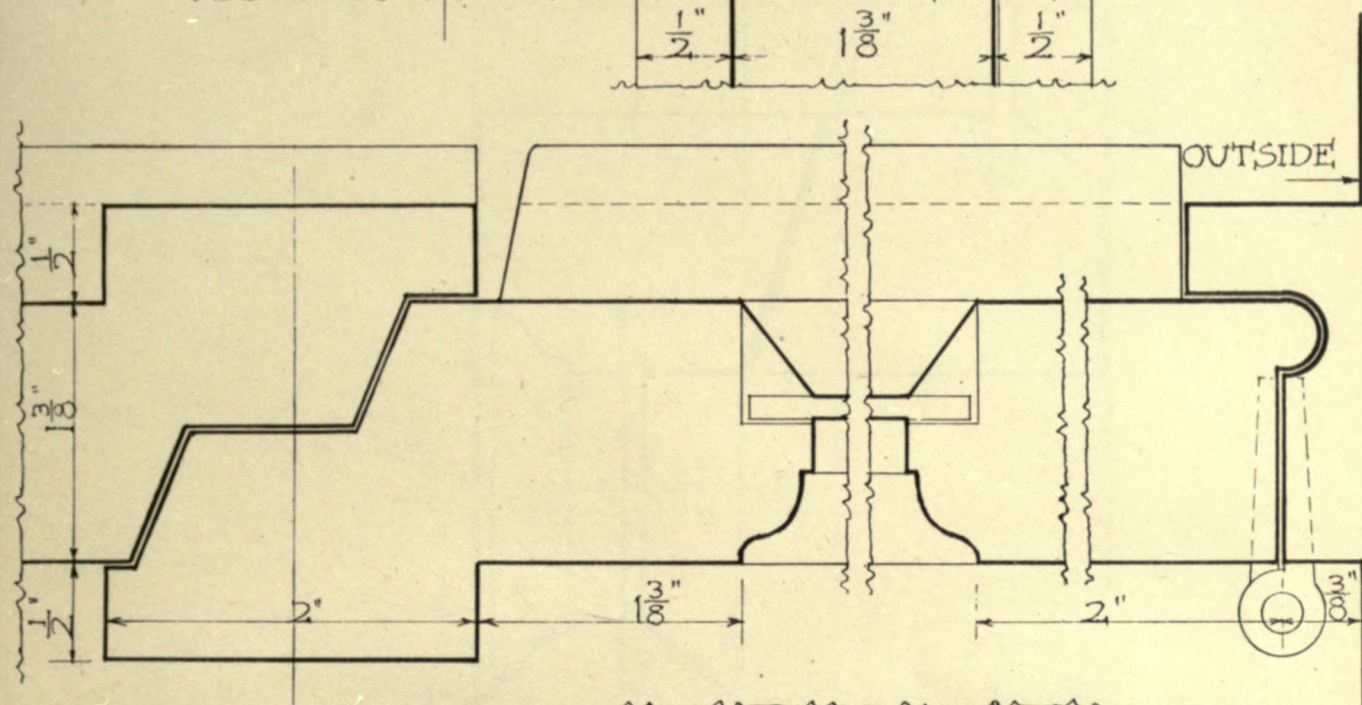


PLATE NO 25

DETAILS FOR STANDARD HARDWARE

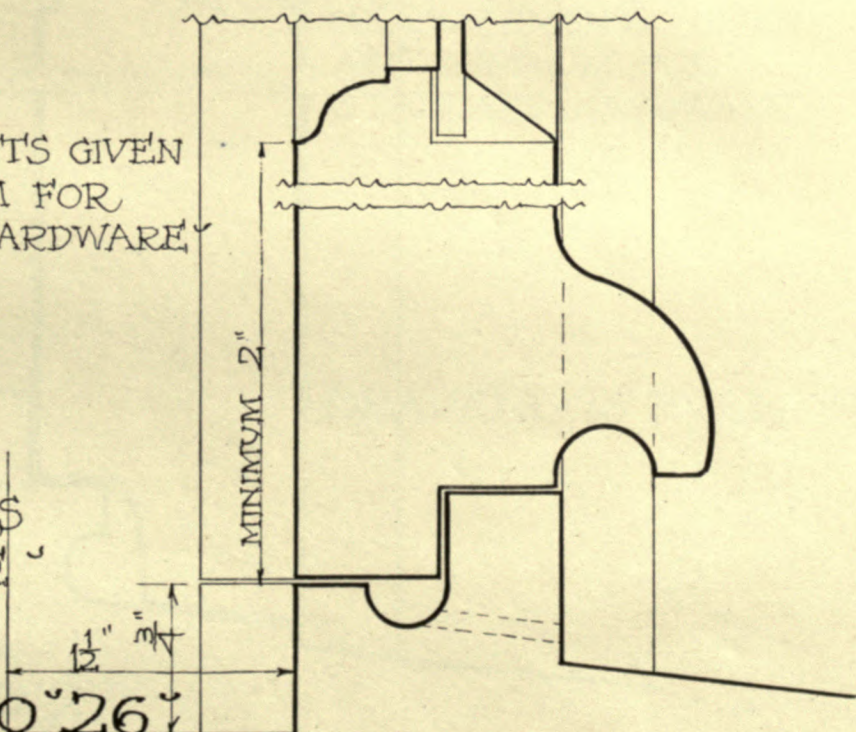
DOUBLE CASEMENT SASH OPENING IN
WITH RABBETED ASTRAGAL MEETING STILES
USING CREMONE BOLT AND ADJUSTERS



MEASUREMENTS GIVEN
ARE MINIMUM FOR
STANDARD HARDWARE

DRAWING IS
FULL SIZE

PLATE NO. 26



DETAILS FOR STANDARD HARDWARE

DOUBLE HUNG SASH

BOTTOM RAIL AND MEETING RAILS

USING SASH LIFTS AND LOCKS

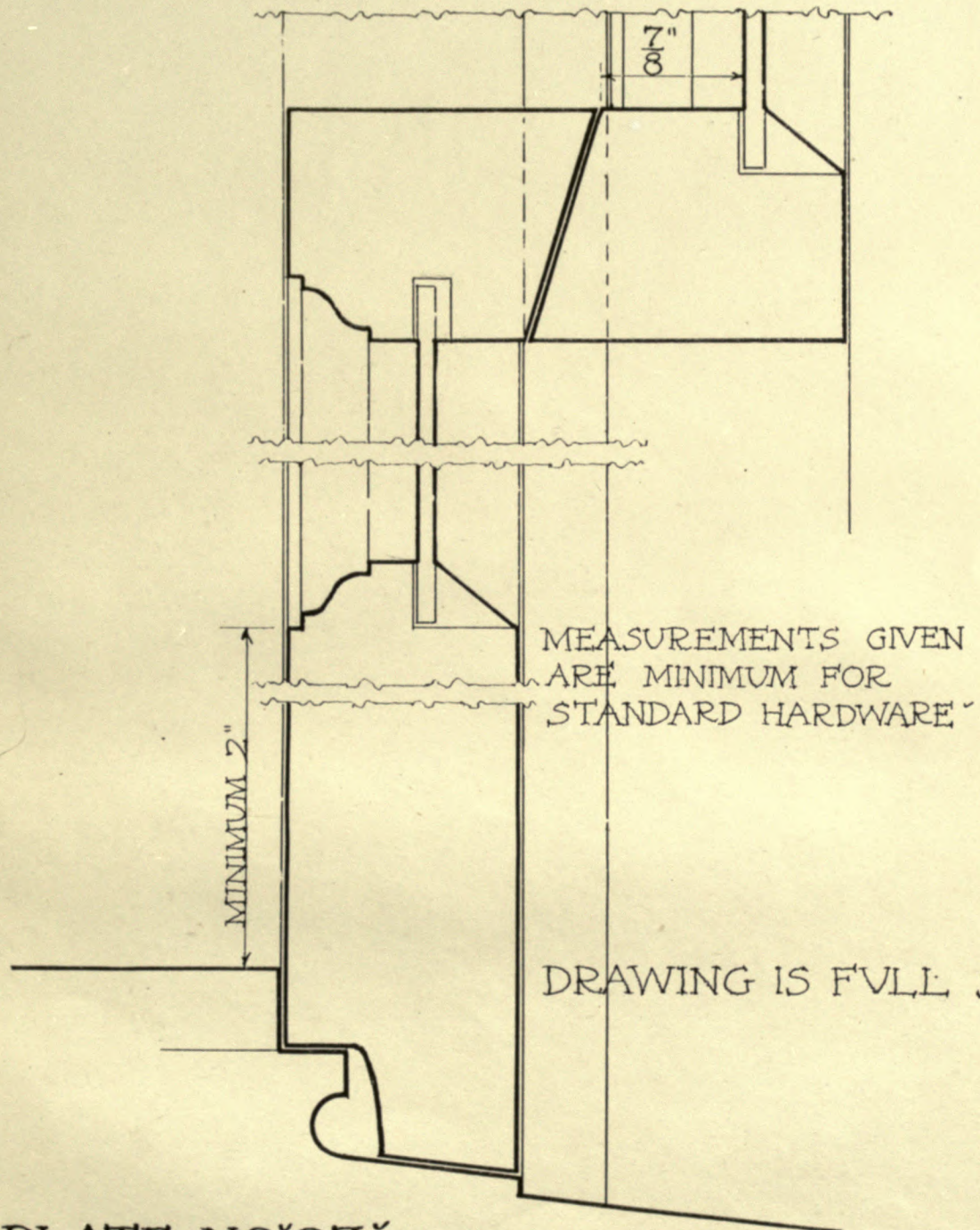


PLATE NO 27

RETURN TO → ENVIRONMENTAL DESIGN LIBRARY
210 Wurster Hall 642-4818

LOAN PERIOD 1		
QUARTER		
2		3
4	5	6

ALL BOOKS MAY BE RECALLED AFTER 7 DAYS
Return books early if they are not being used

DUE AS STAMPED BELOW

FORM NO. DD13, 30m, 4'77

UNIVERSITY OF CALIFORNIA, BERKELEY
BERKELEY, CA 94720

U.C. BERKELEY LIBRARIES



C024520889

