

357 Closer

for Rail, Gate and Dwarf Door Arrangements

Installation Instructions

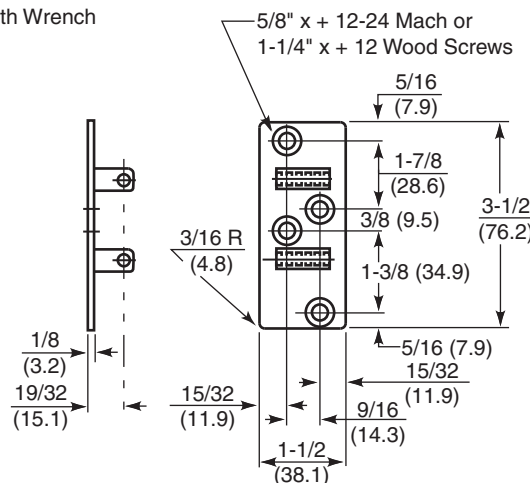
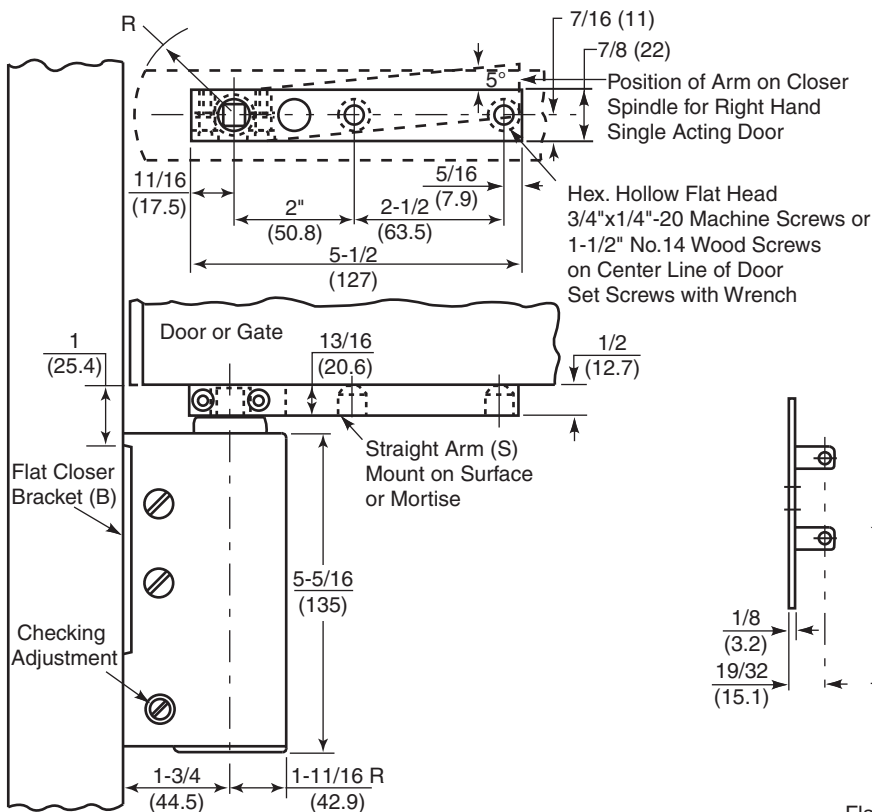
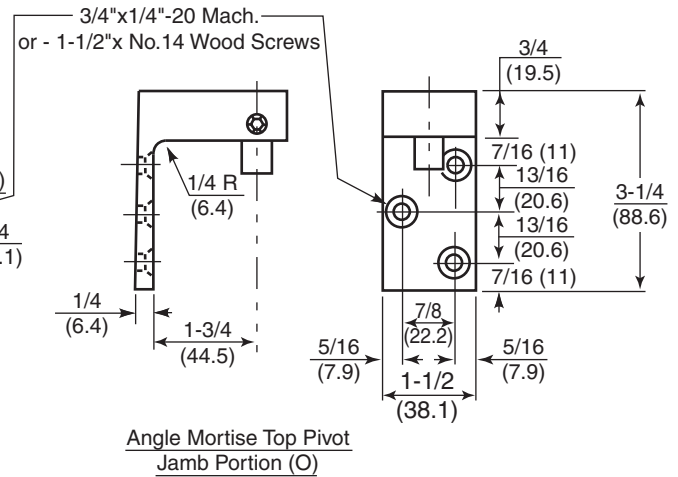
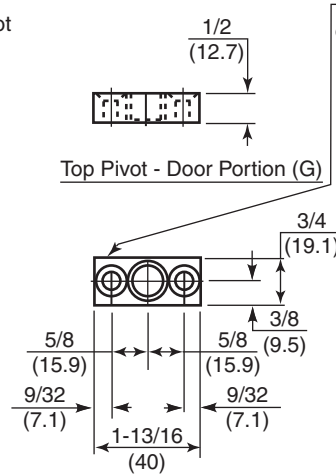
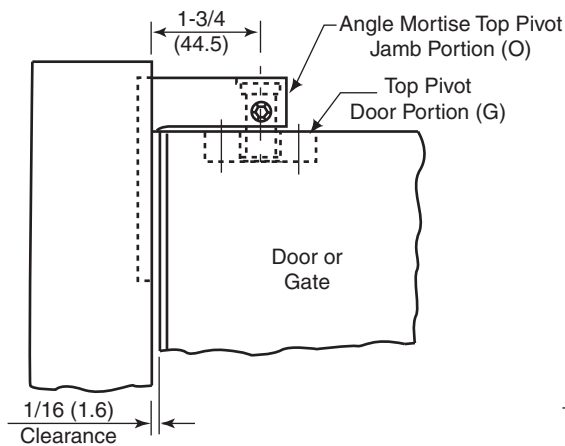
**NORTON
RIXSON**

ASSA ABLOY

! WARNING

This product can expose you to lead which is known to the state of California to cause cancer and birth defects or other reproductive harm. For more information go to www.P65warnings.ca.gov.

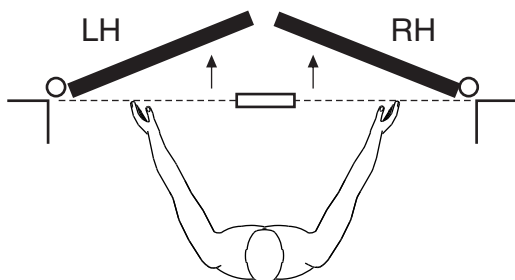
Double Acting Door - Center Door in Opening
Before Tightening Clamping Screw
Single Acting Door - Clamp Arm on Spindle
5° Past Closed Position of Door



Flat Closer Bracket (B)

The ASSA ABLOY Group is the global leader in access solutions. Every day we help people feel safe, secure and experience a more open world.

How To Determine Hand of Door



Face a door swinging open away from you. If it opens to the right, it is right hand. If it opens to the left, it is left hand.

Step 1. Secure the flat Check Bracket "B" on the jamb or gate post.

Step 2. If Angle Surface Top Pivot "N" is used, mount to the surface of the jamb or gate post as shown.

Step 3. Straight Arm "S" - The arm may be clamped on the closer spindle to bring the door to rest at any position desired. To have the door open 90° and stop at this point, set the arm at 90° to the closer. On single acting doors closing against a stop. The arm is set at an angle of 5° past the closed position of the door to insure tight closing against the door strip. On double acting doors, center door in opening before tightening Clamp Screw.

Step 4. THE ARM CLAMPING SCREWS MUST BE TIGHT. Use wrench supplied.

Step 5. The door is then hung, the last operation being to screw the arm tightly to the bottom of the door.

Double Acting Doors: If the door does not center properly in the opening, LOOSEN THE ARM CLAMPING SCREW until the door swings free on the knurled bushing on the Closer Spindle. Move the door to the desired position and TIGHTEN THE CLAMPING SCREWS. (BE SURE THEY ARE VERY TIGHT.)

Single Acting Door: Adjust the closing speed of the door with the valve located near the bottom of the Closer to allow the door to close quickly without slamming.

Double Acting Door: Adjust the valve so door is dampened (no "flip-flop") at the closed position.

