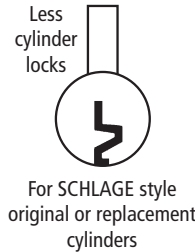


700LC | 800LC

LC Series: Less Cylinder Deadbolt Door & Drawer Cabinet Locks



ANSI/BHMA Grade 1
E07121 | E07041
Woodwork Institute (WI)
acknowledged product

SPECIFICATIONS

Keying: Can be keyed together with other Schlage C Keyway locks
Rekeyable: Easily rekeyable via set screw cylinder release mechanism
ANSI/BHMA: Passed ANSI/BHMA A156.11 Grade 1 performance requirements. Equivalent to E07121 (700S) / E07041 (800S).
US Patent Nos: 4,899,563; 4,920,774
Standard function: Key removable in locked or unlocked position. Standard function locks are non-handed.
Key-retaining: Key removable in locked position only. Specify handing (KL/KR for doors or KI/KV for drawers) when ordering.
Body: Zinc die cast
Cylinder: Will accept other manufacturer's Schlage compatible key-in-knob cylinders
Cylinder length: 1-1/8" or 1-3/8"
Barrel diameter: 1-1/8"
Finish: 26D, US3, 10B
Packaged: Packed 10 per box

CYLINDER INFORMATION

Cylinder: Not included
Includes: All parts necessary to work with other manufacturers cylinders
ILCO cylinder: #1599 (various keyways available)
Assa cylinder: Assa part-number #65611
Medeco cylinders: Requires LCM (1-3/8") locks
 Original: 6 pin #20-009S4
 5 pin #20-008S4
 Biaxial: 6 pin #20W009S4
 5 pin #20W008S4
 Keymark: 6 pin #20K009S4
 Key retaining cylinder: #20W200S1
Compatible electronic cylinders: Medeco LOGIC, ASSA CLIQ or VIDEX CyberLock key-in-knob cylinders

INCLUDED ACCESSORIES

For 1-1/8" barrel length locks:

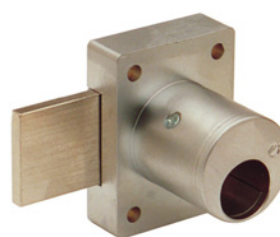
- 10-350 plastic spacers (qty 2)
- 10-054 1/4" plastic bar strike
- 10-055 1/2" plastic bar strike

For 1-3/8" barrel length locks:

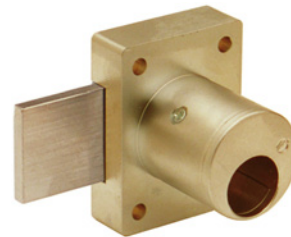
- 10-054 1/4" plastic bar strike

OPTIONAL ACCESSORIES

Spacers: 10-348 (1/4" thick), 10-349 (1/2" thick), 10-350 (1/8" thick)
Strikes: 10-052, 10-056, 10-057, 10-058, 12-2, 12-3, 12-4
Trim collar: TR78
Through-bolt hardware: ETS1 trim plate, ETS1-PL trim pull and ETST1 template



US26D finish



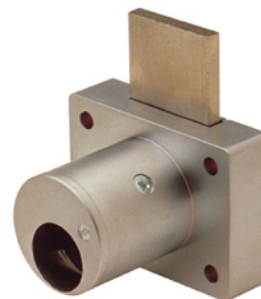
US3 finish



US10B finish

700LC

Function: Cabinet door lock
ANSI/BHMA No.: E07121



US26D finish



US3 finish

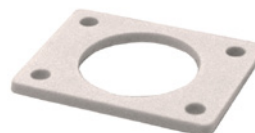


US10B finish

800S

Function: Drawer lock
ANSI/BHMA No.: E07041

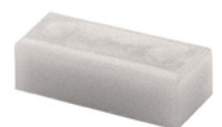
INCLUDED ACCESSORIES



10-350 internal spacers
 For a flush fit on varying material thicknesses



10-054 bar strike
 1/4" plastic bar strike



10-055 bar strike
 1/2" plastic bar strike



OLYMPUS
LOCK
INC

700LC | 800LC

ANSI/BHMA Grade 1
E07121 | E07041

LC Series: Less Cylinder Deadbolt Door & Drawer Cabinet Locks

OPTIONAL ACCESSORIES - See our website for a complete list of optional components.

Internal Plastic Spacers

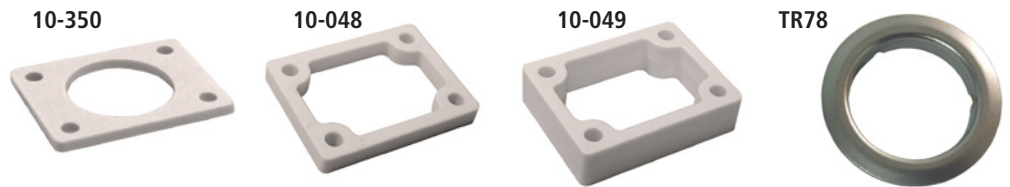
- 10-350 1/8" thick plastic spacers
- 10-348 1/4" thick plastic spacers
- 10-349 1/2" thick plastic spacers

Strikes

- Plastic bar strikes: 10-054, 10-055, 10-057, 10-058. Metal strikes: 10-056 12-1, 12-2, 12-3, 12-4

Trim Ring

- TR78 trim ring



Through-Bolt Mounting Plate

External metal 1/8" or 1/4" through-bolt plate allows for secure and attractive flush mounting of the cabinet lock face. Available in US3 or US26D finish.

- ETS1-125 through-bolt plate, 1/8" thick
- ETS1-250 through-bolt plate, 1/4" thick

Through-Bolt Mounting Plate Template

Allows for proper mounting hole placement of through-bolt plate. Can be used as a 1/8" shim spacer. Available in US3 and US26D finish.

- ETST2 through-bolt plate template

ETS1
Through-bolt plate

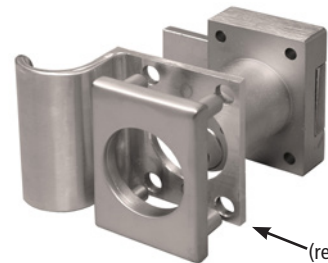


ETST1
Through-bolt plate
template



U.S. Patent No. D490,686

ETS1-PL
Through-bolt pull



ETS1-PL
(requires use of
ETS1)

78-KABA-CONV Kaba Conversion Kit

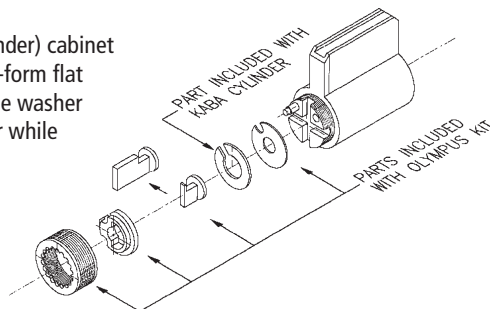
For use with Olympus 700LC and 800LC (less cylinder) cabinet locks. The conversion kit requires the use of the C-form flat washer supplied with the KABA-Peaks cylinder. The washer is needed to keep the Olympus tailpiece on center while operating the lock.

Use with the following cylinders

KABA-Peaks universal cylinder

#3400-XX-1099 (where "XX" denotes finish)

Mul-T-Lock cylinders



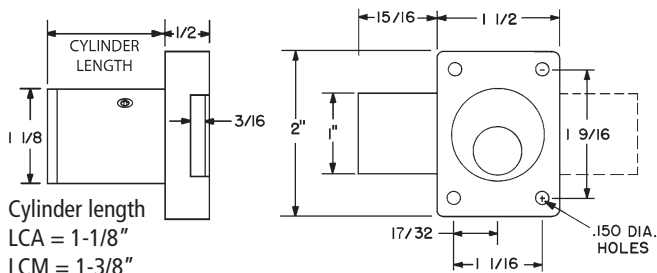
78-201 Series

Schlage C keyway cylinders



DIMENSIONS

700LC Cabinet Door Lock



800LC Drawer Lock

