


# Standard Cylinder

## Schlage C Keyway or Less Cylinder

### ► 829R Showcase/Ratchet Lock



Less cylinder locks



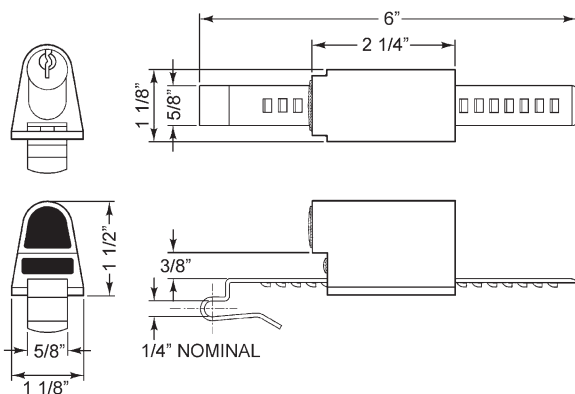
For SCHLAGE style original or replacement cylinders

Woodwork Institute (WI) acknowledged product

#### FOR BYPASSING SLIDING DOORS

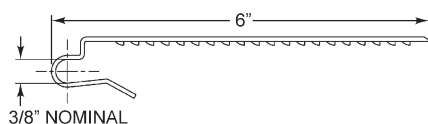
Item	Finish	Mat. Thickness	Keying
829R	26D	Up to 1/4"	KD, KA 101, 102, O-Bit Custom Keyed
829R-LC	26D	Up to 1/4"	Less Cylinder
829-MD	Medeco Driver Pack (required if installing Medeco cylinders in LC (less cylinder product). Sold separately.		
Optional straps:	729RS-2 fits up to 3/8" material thickness 729RS-3 fits up to 5/8" material thickness (adjustable)		

\*Standard and optional straps with nylon coating available August 2019

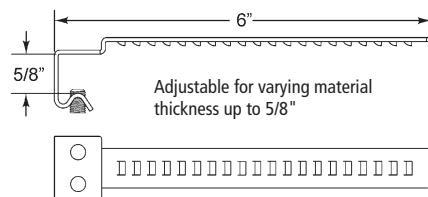


#### OPTIONAL STRAPS

##### 729RS-2



##### 729RS-3



### SPECIFICATIONS

**Rekeyable:** Easily rekeyable via set screw cylinder release mechanism  
**ANSI/BHMA:** Complies with clause 6.3 (8.2~8.4) of ANSI/BHMA A156.11 ANSI standards  
**Use:** Sliding glass or wood doors  
**Body:** Zinc die cast  
**Strap:** Steel  
**Finish:** 26D  
**Packaged:** Packed 10 per box

### 829R KEYING INFORMATION

**Keying:** Can be keyed together with other Schlage C Keyway locks  
**Keyway:** Schlage C keyway  
**Keys:** Includes 2 keys per lock  
**Cylinder:** Solid brass pin, tumbler  
**Stock keying:** KD/KA - 5 pin standard  
**Stock KA#:** 101, 102, O-Bit  
**Masterkeying:** 6 pin standard  
**Grand masterkeying:** Available  
**Keyblank 5-pin:** KBSC-5  
**Keyblank 6-pin:** KBSC-6

### 829R-LC CYLINDER INFORMATION

**Cylinder:** Not included  
**Includes:** All parts necessary to work with other manufacturers' cylinders  
**Accepts:** Schlage compatible key-in-knob cylinders including ILCO cylinder #1599 and Medeco cylinders  
**Medeco cylinders:** Requires optional 829-MD Medeco Driver Pack (available separately.) Will accept the following Medeco cylinders:  
 Original: 6 pin #20-009S4  
 5 pin #20-008S4  
 Biaxial: 6 pin #20W009S4  
 5 pin #20W008S4  
 Keymark: 6 pin #20K009S4  
 Key retaining cylinder: #20W200S1  
**Compatible electronic cylinders:** Medeco LOGIC, ASSA CLIQ or VIDEX CyberLock key-in-knob cylinders

### INCLUDES

729RS-1 strap for 3/16" to 1/4" material thickness

### OPTIONAL ACCESSORIES

**Alternate straps:** 729RS-2 strap for 3/8" material thickness, or 729RS-3 strap for up to 5/8" material thickness  
**Medeco driver pack:** 829-MD (required if using Medeco cylinders)  
**Cylinder:** 78-201 Series (page 61)



**OLYMPUS LOCK**  
INC

Tel: 206.362.3290 | 800.525.0954  
 Fax 206.362.3569 | www.olympuslock.com



The following warning is applicable to all parts listed on this page:  
**WARNING:** This product can expose you to chemicals including chromium, which is known to the State of California to cause cancer and birth defects or other reproductive harm. for more information go to www.P65Warnings.ca.gov.