

# Standard Cylinder

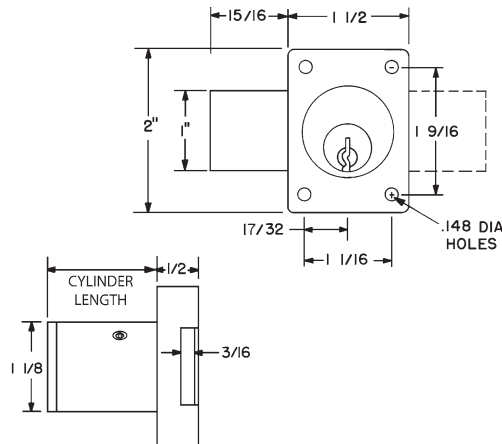
## Schlage C Keyway or Less Cylinder

### ► 700S Door Lock



ANSI/BHMA  
A156.11 Grade 1  
E07121

Woodwork Institute  
(WI) acknowledged  
product



Item	Function	Finish	Cyl. Length	Keying
700S	Door	26D, US3, 10B	1-1/8" or 1-3/8"	KD, KA 101,102, O-Bit Custom Keyed
700KL	LH Door-KR	26D, US3, 10B	1-1/8" or 1-3/8"	
700KR	RH Door-KR	26D, US3, 10B	1-1/8" or 1-3/8"	
Key-retaining (KR): Specify item <b>700KL</b> for left-hand doors and <b>700KR</b> for right-hand doors. (KL and KR designation are <i>only required for key retaining locks</i> ).				
<b>10B finish:</b> Not available on 700S 1-3/8", 700KL 1-3/8" or 700KR 1-3/8"				

### SPECIFICATIONS

**Keying:** Can be keyed together with other Schlage C Keyway locks

**Rekeyable:** Easily rekeyable via set screw cylinder release mechanism

**ANSI/BHMA:** Passed ANSI/BHMA A156.11 Grade 1 performance requirements. Equivalent to E07121 (700S) / E07041 (800S).

**US Patent Nos:** 4,899,563; 4,920,774

**Standard function:** Key removable in locked or unlocked position. Standard function locks are non-handed.

**Key-retaining:** Key removable in locked position only. Specify handing (KL/KR for doors or KI/KV for drawers) when ordering.

**Body:** Zinc die cast

**Cylinder:** Will accept other manufacturer's Schlage compatible key-in-knob cylinders

**Cylinder length:** 1-1/8" or 1-3/8"

**Barrel diameter:** 1-1/8"

**Finish:** 26D, US3, 10B

**Packaged:** Packed 10 per box

### KEYING INFORMATION

**Keyway:** Schlage C keyway

**Keys:** Includes 2 keys per lock

**Cylinder:** Solid brass, pin tumbler

**Stock keying:** KD/KA - 5 pin standard

**Stock KA#:** 101, 102, O-Bit

**Masterkeying:** 5 pin standard, 6-pin available

**Grand masterkeying:** Available

**Keyblank 5-pin:** KBSC-5

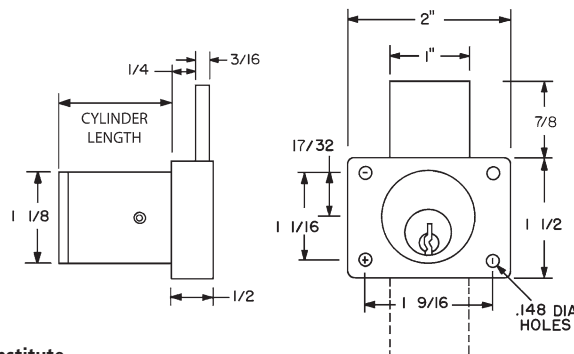
**Keyblank 6-pin:** KBSC-6

### ► 800S Drawer Lock



ANSI/BHMA  
A156.11 Grade 1  
E07041

Woodwork Institute  
(WI) acknowledged  
product



### INCLUDED ACCESSORIES

**For 1-1/8" barrel length locks:**

10-350 plastic spacers (qty 2)

10-054 1/4" plastic bar strike

10-055 1/2" plastic bar strike

**For 1-3/8" barrel length locks:**

10-054 1/4" plastic bar strike

### OPTIONAL ACCESSORIES

See the accessories section of this catalog for a complete list.

**Spacers:** 10-348 (1/4" thick), 10-349 (1/2" thick), 10-350 (1/8" thick)

**Strikes:** 10-052, 10-056, 10-057, 10-058, 12-2, 12-3, 12-4

**Trim collar:** TR78

**Through-bolt hardware:** ETS1 trim plate, ETS1-PL trim pull and ETST1 template

Item	Function	Finish	Cyl. Length	Keying
800S	Drawer	26D, US3, 10B	1-1/8" or 1-3/8"	KD, KA 101,102 O-Bit Custom Keyed
800KI	IH Drawer-KR	26D, US3, 10B	1-1/8" or 1-3/8"	
800KV	VH Drawer-KR	26D, US3, 10B	1-1/8" or 1-3/8"	
Key-retaining (KR): Specify item <b>800KI</b> for inverted drawers and <b>800KV</b> for vertical drawers. (KI and KV designation are <i>only required for key retaining locks</i> ).				

The following warning is applicable to all parts listed on this page:



**WARNING:** This product can expose you to chemicals including chromium, which is known to the State of California to cause cancer and birth defects or other reproductive harm. for more information go to [www.P65Warnings.ca.gov](http://www.P65Warnings.ca.gov).

