



Markar HS203 Half Surface

Standard Features

Barrel Type Hinge
 .187" diameter stainless steel pin (rod)
 Medical bearings
 Stainless steel end pins
Material
 Heavy-duty 14 gauge 1012 carbon steel
 Cover - extruded aluminum
Finishes
 Zinc Plated
 Cover - Mill Finish
Standards
 ANSI/BHMA Standard A156.26 Grade 1
Mounting Hardware
 No exposed mounting fasteners
 Custom 12-24 x 11/16" S.S Phillips Flat Head
 Undercut TEK Screws
 1/4-14 x 3/4 Security TORX TEK Screws

Capacity
 Supports weights up to 600lbs.
 4'0" maximum door width
Standard Sizes
 6'8", 7'0", 7'2", 8'0", 10'0"
Hole Pattern
 Symmetrically templated
Handing
 Not required for standard 7'0",
 8'0" or 10'0". Specify handing
 for 6'8" and 7'2" and for most
 optional features

Fire Rating
 3 hours- hollow metal doors
 90 minutes- hollow metal and
 composite
 20 minutes- wood doors
 Classified in accordance
 with UL10C for positive
 pressure
 Fire-rated label

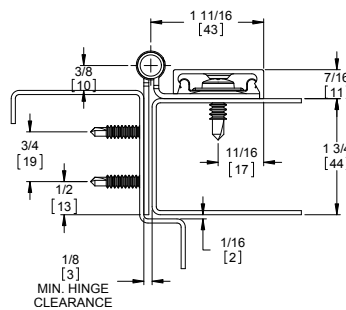
Optional Features

Finishes
 Scratch-Resistant Powder Coated Paint
Fasteners
 1 5/8" steel sleeve bolts
 Tamper-proof security screws

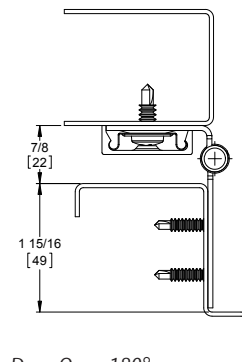
Other Features
 Custom lengths - specify in inches
 Custom hole pattern
 Dutch door hinges - suffix "DDP"
 Hospital tips - suffix "HT"
 Raised barrel - suffix "RB"
 Lead-lined cover with 4 lbs. lead
 lining - suffix "LL"

Electrical Modifications
 Current Transfer Prep (frame leaf only)
 - suffix "CTP"

This half-surface pin & barrel continuous hinge can be used to repair and replace existing hinges on both fire-labeled and non-labeled openings. The hinge fits into the gap left after standard butt hinges are removed. It can assist in reversing the handing of a door, or to reverse the swing of a door hung in an evenly-rabbetted frame. (Please contact the factory for instructions for unevenly-rabbetted frames.)



Door Closed



Door Open 180°

ASSA ABLOY

The global leader in
 door opening solutions

800-824-3018 | www.markar.com

Check the web site for the up-to-date catalog

Copyright © 2015-2017, Pemko Manufacturing Co., an ASSA ABLOY Group company. All rights reserved.
 Reproduction in whole or in part without the express written permission of Pemko Manufacturing Co. is prohibited.