

# Markar HG326 Swing Clear Adjustable Hinge Guard

## Standard Features

**Barrel Type Hinge**  
 .187" diameter Stainless Steel pin (rod)  
 Medical bearings  
 Stainless Steel end pins  
**Material**  
 Heavy-duty 14 gauge Stainless Steel  
**Finishes**  
 US32D Satin Stainless Steel (630)  
**Standards**  
 ANSI/BHMA Standard A156.26 Grade 1  
**Mounting Hardware**  
 Custom 12-24 x 1 1/16" S.S Phillips Flat  
 Head Undercut TEK Screws

**Capacity**  
 Supports weights up to 600 lbs.  
 4'0" maximum door width  
**Standard Sizes**  
 6'8", 7'0", 7'2", 8'0", 10'0"  
**Hole Pattern**  
 Symmetrically templated  
**Door Edge**  
 Square hinge edge  
 Recommend Adjust-A-Screw for  
 beveled hinge edge  
**Handing**  
 Not required for standard 7'0", 8'0"  
 or 10'0". Specify handing for 6'8" and  
 7'2" and for most optional features

**Fire Rating**  
 3 hours- hollow metal doors  
 90 minutes- hollow metal and  
 composite core wood fire doors  
 20 minutes- wood doors



Classified in accordance  
 with UL10C for positive  
 pressure

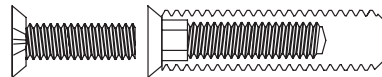


Fire-rated label

## Optional Features

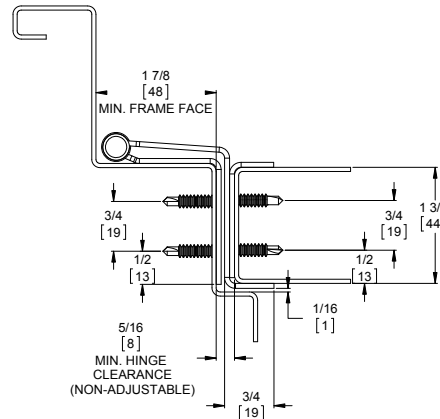
**Finishes**  
 US32 Bright Stainless Steel (629)  
 Scratch-Resistant Powder Coated Paint  
**Other Features**  
 Custom lengths- specify in inches  
 Custom hole pattern  
 Dutch door hinges- suffix "DDP"  
 Hospital tips - suffix "HT"  
 Welded end pins

**Fasteners**  
 Tamper-proof security screws  
 Adjust-A-Screw™ for correcting  
 frame fit problems up to 3/8"

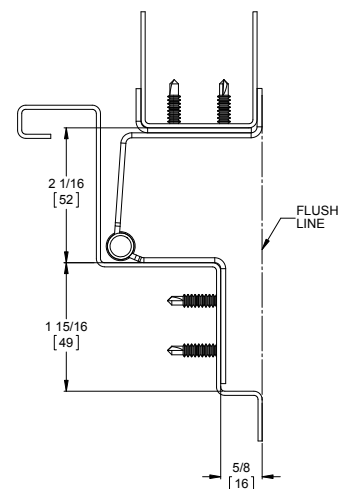


**Electrical Modifications**  
 Current Transfer Prep - suffix "CTP"  
 (EL-EPT-SC Power Transfer Recommended)

The incorporated edge guard protects  
 the door from unsightly dents and  
 gouges while also protecting the hinge  
 from vandalism.



Door Closed



Door Open 90°

**ASSA ABLOY**

The global leader in  
 door opening solutions

800-824-3018 | [www.markar.com](http://www.markar.com)  
 Check the web site for the up-to-date catalog

Copyright © 2015-2017, Pemko Manufacturing Co., an ASSA ABLOY Group company. All rights reserved.  
 Reproduction in whole or in part without the express written permission of Pemko Manufacturing Co. is prohibited.