

Markar FS321 Full Surface 3/4" Offset Hinge

Standard Features

Barrel Type Hinge
 .187" diameter Stainless Steel pin (rod)
 Medical bearings
 Stainless Steel end pins
 Material
 Heavy-duty 14 gauge Stainless Steel
 Cover - extruded aluminum
 Finishes
 US32D Satin Stainless Steel (630)
 Standards
 ANSI/BHMA Standard A156.26 Grade 1
 Mounting Hardware
 Fasteners concealed underneath
 aluminum cover
 1/4-14 x 3/4" Security TORX TEK Screws

Capacity
 Supports weights up to 600 lbs.
 4'0" maximum door width
 Standard Sizes
 6'8", 7'0", 7'2", 8'0", 10'0"
 brushed aluminum
 Handing
 Not required for standard 7'0", 8'0"
 or 10'0". Specify handing for 6'8" and
 7'2" and for most optional features

Fire Rating
 3 hours- hollow metal doors
 90 minutes- hollow metal and
 composite core wood fire doors
 20 minutes- wood doors



Classified in accordance
 with UL10C for positive
 pressure



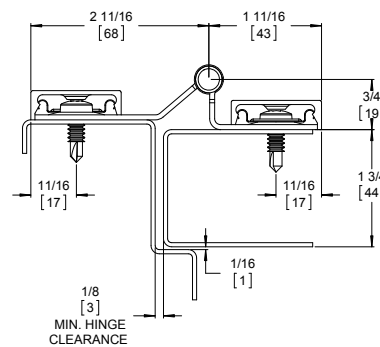
Fire-rated label

Optional Features

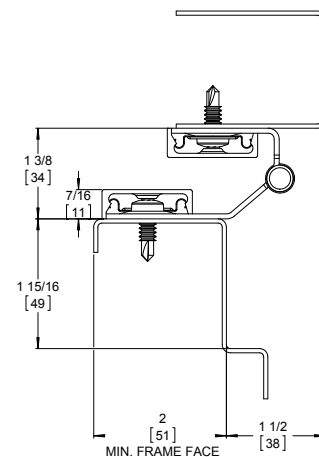
Finishes
 US32 Bright Stainless Steel (629)
 Scratch-Resistant Powder Coated Paint
 Fasteners
 Tamper-proof security screws

Other Features
 Custom lengths- specify in inches
 Custom hole pattern
 Dutch door hinges- suffix "DDP"
 Hospital tips - suffix "HT"
 Lead lined covers with 4 lbs. lead lining
 - suffix "LL"
 Welded end pins

This surface mount pin & barrel model
 was developed to work in conjunction
 with existing 3/4" offset floor closers.
 Where top or intermediate pivots have
 worn and the floor closer will remain, the
 FS321 is the solution to extending the life
 of the opening.



Door Closed



Door Open 180°

ASSA ABLOY

The global leader in
 door opening solutions

800-824-3018 | www.markar.com

Check the web site for the up-to-date catalog

Copyright © 2015-2017, Pemko Manufacturing Co., an ASSA ABLOY Group company. All rights reserved.
 Reproduction in whole or in part without the express written permission of Pemko Manufacturing Co. is prohibited.