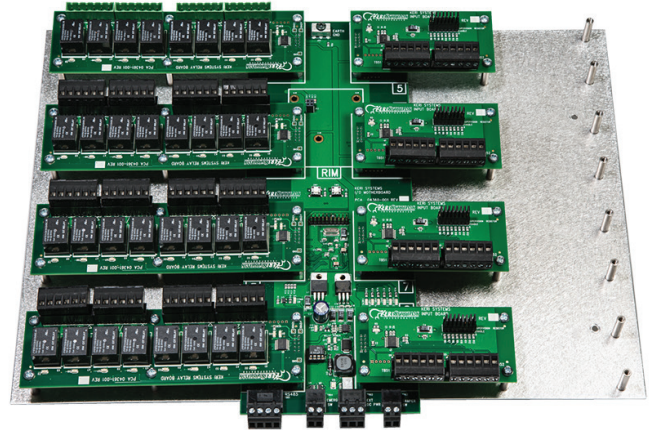
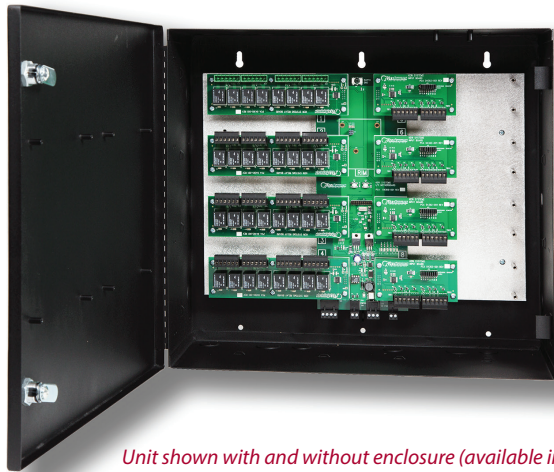




GIOX Greater Input/Output Module

DATA SHEET



Unit shown with and without enclosure (available in both configurations)

- Expands Auxiliary Input and Output capability for NXT controllers
- Up to 64 Inputs/Outputs (in banks of 8) per NXT Controller Bus
- Up to two GIOX units on an NXT-2D and up to four units on an NXT-4D
- Re-assignable/interchangeable with Controller's door I/O
- 4-State Supervision on Inputs
- Tamper and Emergency Inputs
- Status Indicators for power, communication, and relay position
- Quick disconnect connectors
- Popular uses include elevator control for tall buildings and applications with intensive input/output linking requirements for special functions.

Keri's **GIOX Greater Input/Output Module** is much like the NXT-4X4 I/O Module except it has far greater capacity. It is designed to expand the flexibility of any installation by providing additional access control functionality as well as sophisticated input monitoring and I/O linkage macro capability for NXT hardware-based systems with large numbers of sensors and devices. It is perfectly suited for elevator control for buildings with more than 20 floors when combined with Doors.NET software's Elevator Control option.

GIOX is comprised of a motherboard with connectors onto which Input boards and Output boards can be attached. Each board has eight Inputs or eight Outputs, and up to eight boards can be connected to each motherboard. The motherboard contains the RS-485 bus connection for the NXT controller as well as the power input, tamper monitoring input, and an emergency switch input which removes power from all relays on all relay boards.

*Note - If using the inputs for monitoring or the outputs for manual operation only, NXT controllers with standard Keri firmware may be used.
If elevator control or I/O linking is required, use Mercury Powered NXT hardware.*



www.kerisys.com

302 Enzo Drive • San Jose, California 95138 • email: sales@kerisys.com

Phone: 408-435-8400 • Toll Free: 800-260-5265 • Fax: 408-577-1792

GIOX - Greater Input/Output Module

DATA SHEET - Page 2 of 2

Specifications

Model Numbers::

KE-8 Enclosure
 NXT-GIOX Motherboard
 w/Mounting Plate
 NXT-8IN Input Board
 NXT-8OUT Output Board - NXT

Size:

Enclosure:
 17.25 W x 15.25 T x 6.75 D inches
 43.82 W x 38.74 T x 17.15 D cm
 Motherboard w/Mounting Plate:
 15.45 W x 11.56 T x 2.00 D inches
 39.24 W x 29.36 T x 5.08 D cm

Weight:

Enclosure - 13.61 lbs (6.17 kg)
 Motherboard
 w/Mounting Plate - 1.65 lbs (.75 kg)
 Input Board - 0.35 lbs (159 g)
 Output Board - 0.10 lbs (45 g)

Inputs:

8 per Module
 2-State or 4-State Supervision

Outputs:

8 dry-contact relays per Module
 Contact Rating - 1 A @ 24 VDC

Operating Conditions:

32° F to 150° F (0° C to 60° C)
 0% to 90% Relative Humidity
 Non-Condensing

Inputs:

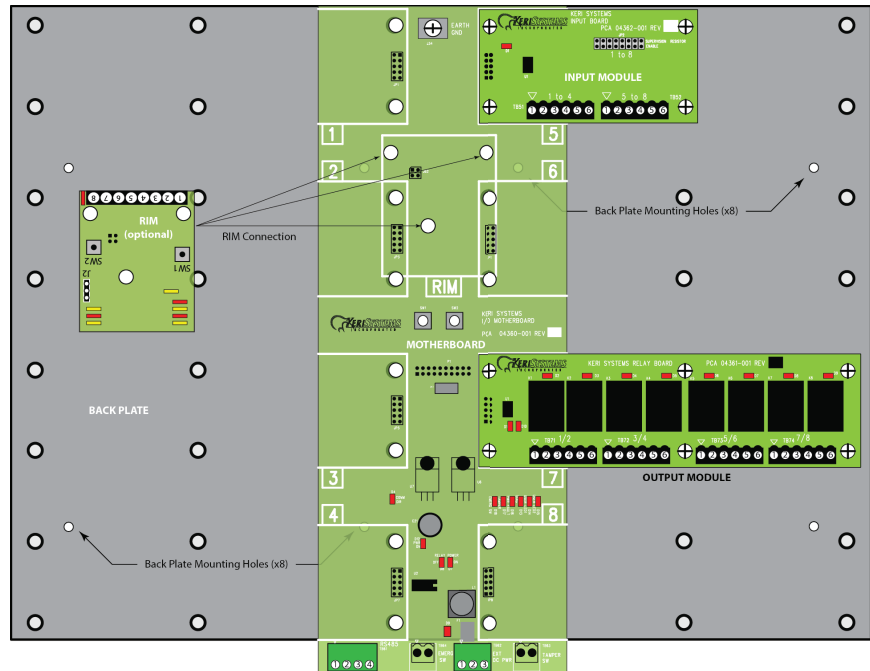
8 per Module
 User selectable, 2-State,
 4-State, or no Supervision

Outputs:

8 dry-contact relays per Module
 Contact Rating - 1 A @ 24 VDC

Power Requirements:

NXT Controller Power - Using NO Output
 Boards
 10 to 14 VDC @ 1.5 A Max



(for a unit with up to 8 input boards)

Current:

Motherboard Only - 100 mA
 Motherboard w/Reader & RIM - 200 mA
 Input Board - 75 mA per board

Stand Alone Power Supply - Using Any Output Boards:

10 to 14 VDC @ 3.5 A Max
 (for a unit with up to 8 output boards)

Current:

Motherboard Only - 100 mA
 Motherboard w/Reader & RIM - 200 mA
 Output Board - 300 mA per board

Note: Specifications are subject to change

ORDERING INFORMATION:

Model #	Description
NXT-GIOX	Backplane for Greater I/O Expansion platform

RELATED PRODUCTS:

Model #	Description
NXT-GIOX-NE	Backplane for Greater I/O Expansion platform without Enclosure
NXT-8In	8 Input Expansion Board for NXT-GIOX backplane
NXT-8Out	8 Output Expansion Board for NXT-GIOX backplane.



Presented By: