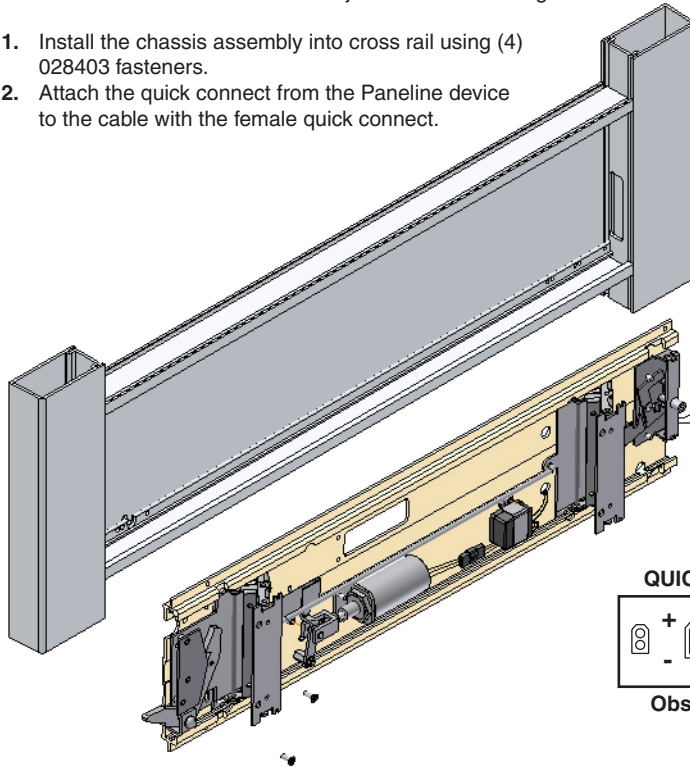


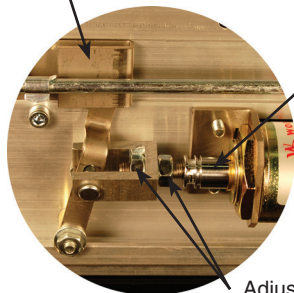
CHASSIS ADJUSTMENT AND TESTING INSTALLATION

NOTE: For retrofit units, remove the push pad from the chassis assembly prior to installation into the cross rail to allow for installation adjustments and testing.

1. Install the chassis assembly into cross rail using (4) 028403 fasteners.
2. Attach the quick connect from the Paneline device to the cable with the female quick connect.



Connecting link to contract the slide bar with plunger seated in solenoid housing.



Plunger seated in solenoid housing

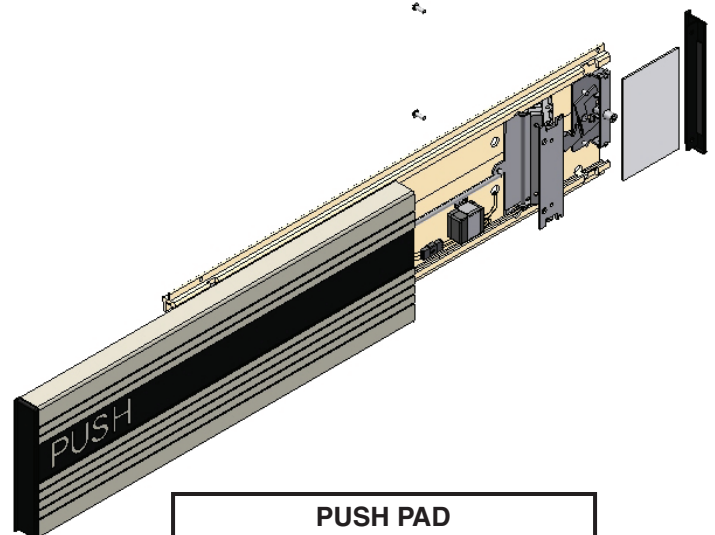
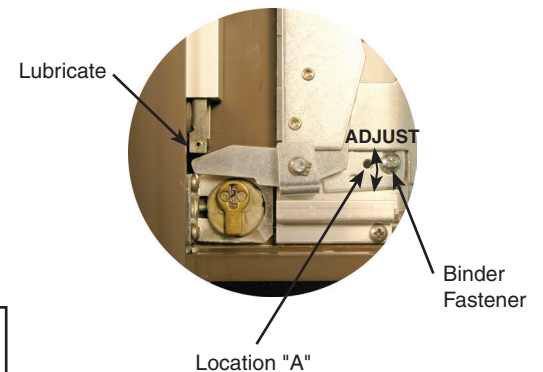
Adjustment Fasteners

SOLENOID PLUNGER ADJUSTMENT

1. With the door in the vertical position, depress the toggle assembly to trip the rods.
2. The solenoid plunger should bottom in the solenoid housing at the same time the connecting link contacts the slide bar.
3. Loosen hex nuts and adjust the solenoid plunger as required.
4. Secure the clevis bracket by tightening the two hex nuts.
5. With the device connected to the SP-1000X power supply, test the operation.
6. Re-adjust as necessary to obtain the proper operation.

LIFT LEVER ADJUSTMENT

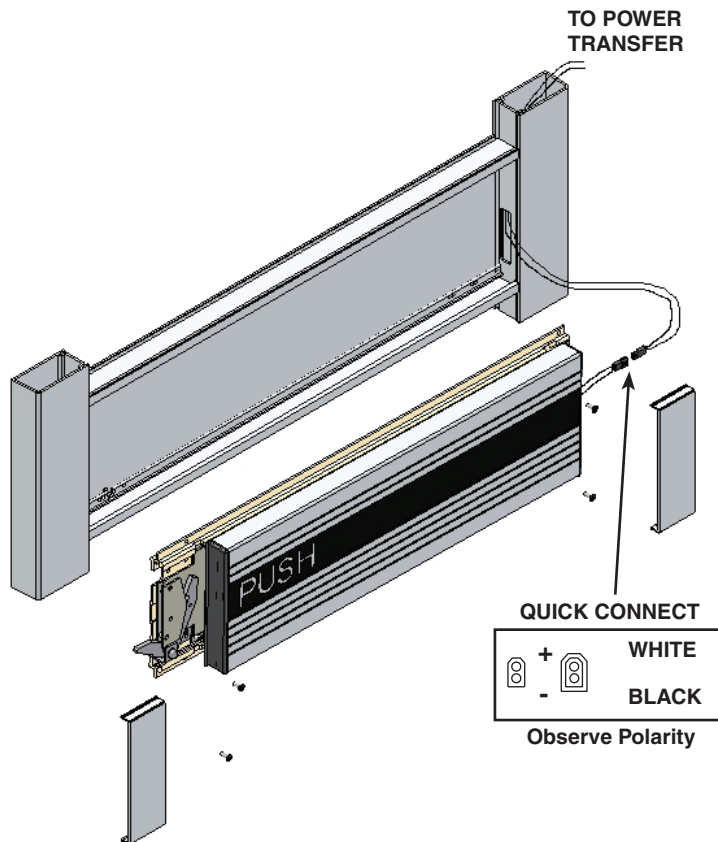
1. Lubricate lever as indicated.
2. Loosen the binder fastener on axle bracket.
3. Rotate the axle bracket until the lever arm contacts the bottom of the traveler roller. Tighten the binder fastener to allow for operation testing.
4. Stand the door up with a spacer between the door and the floor to allow for bolt operation and check for proper operation.
5. After testing unit thoroughly, drill a hole at location "A" using a #23 (0.154 dia.) drill bit.
6. Lock adjustment in place using extra binder fastener 028747.



PUSH PAD INSTALLATION

1. After the proper lever and solenoid adjustments have been completed, remove device from the cross rail.
2. Slide the push pad onto the toggle assemblies.
3. Slide the filler plate into place as illustrated.
4. Attach the end cap with (2) 028352 fasteners.

CHASSIS INSTALLATION



1. After completion of adjustments and installation of push pad, install the chassis assembly into the cross rail using (4) 028403 fasteners.
2. Attach the quick connect from the Paneline device to the cable with the female quick connect.
3. To transfer the wiring from the door to the frame use an approved power transfer device.
4. Complete the connection from the quick connect cable to the power transfer and to the wire run from the SP-1000X power supply.
5. Test unit for proper electrical activation.
6. Reference the standard Paneline Installation Instruction 038371 for rod adjustments and additional information.

Notes:

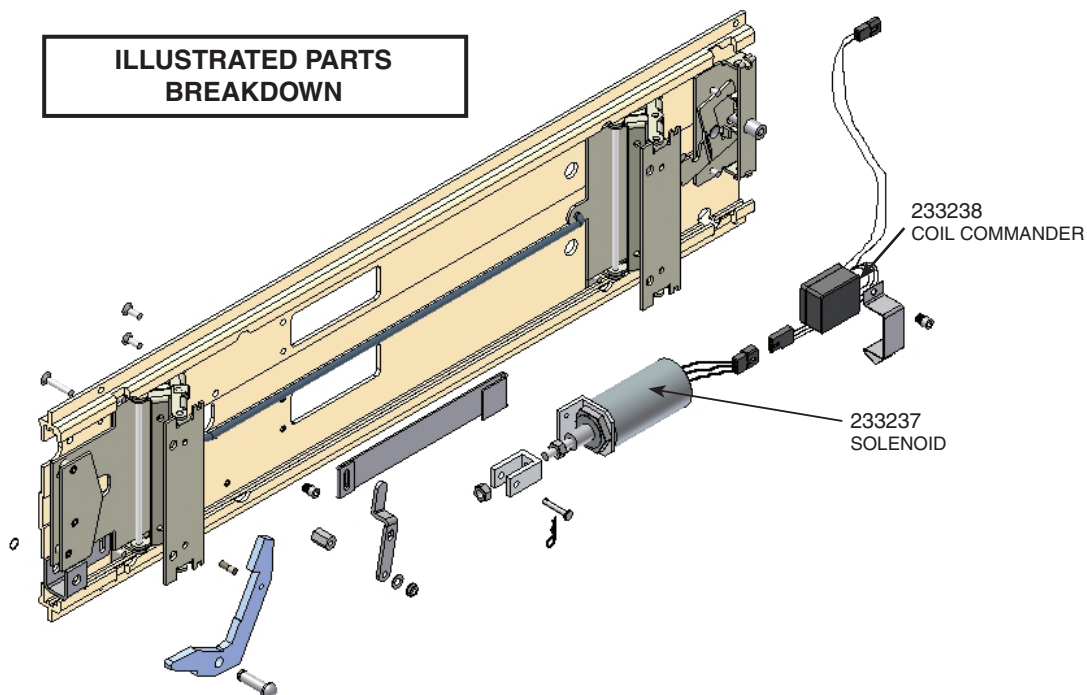
- a. All wiring to be coordinated with a licensed electrical installer.
- b. Point to point wiring diagram to be supplied with each project at the time of installation.
- c. The SP-1000X is the approved power supply.

ELECTRICAL SPECIFICATION

Voltage: 24 VDC

Current: 14 A inrush (0.3 sec.)
0.5 A holding

ILLUSTRATED PARTS BREAKDOWN

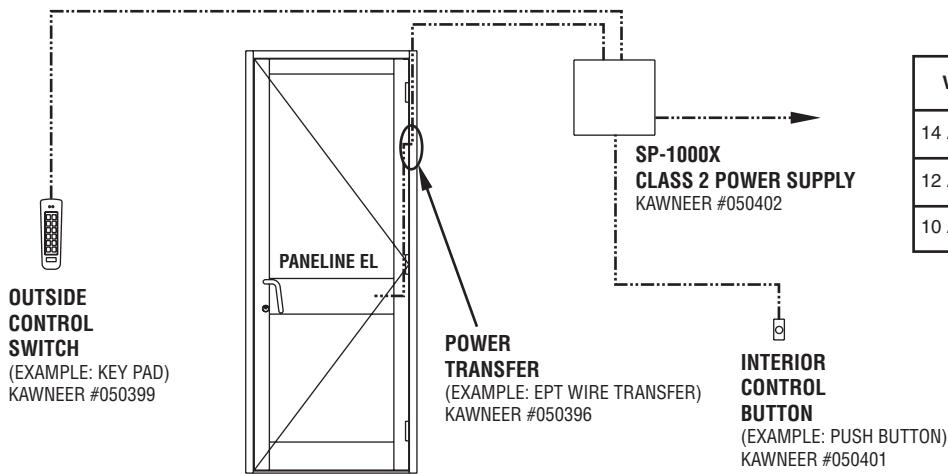


Laws and building and safety codes governing the design and use of glazed entrance, window, and curtain wall products vary widely. Kawneer does not control the selection of product configurations, operating hardware, or glazing materials, and assumes no responsibility therefor.

Kawneer reserves the right to change configuration without prior notice when deemed necessary for product improvement.

© Kawneer Company, Inc., 2009

BASIC WIRING DIAGRAM

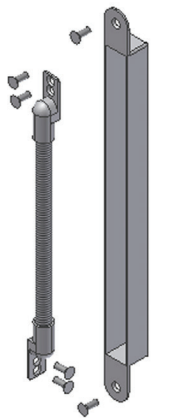


WIRE GAUGE	ELECTRIC B/H or O/P	EPT
14 AWG Stranded	40 ft	60 ft
12 AWG Stranded	60 ft	90 ft
10 AWG Stranded	100 ft	150 ft

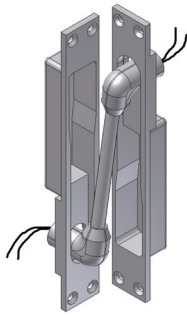
Notes:

- All wiring to be coordinated with a licensed electrical installer.
- Point to point wiring diagram to be supplied with each project at the time of installation.
- The SP-1000X is the approved power supply.

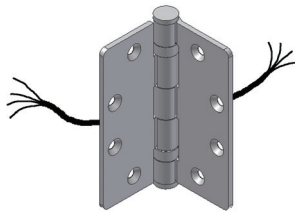
POWER TRANSFERS



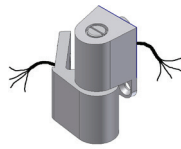
EPT
KAWNEER #050396



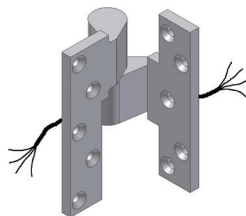
Von Duprin EPT
KAWNEER #138637 (2 Wires)
KAWNEER #138638 (10 Wires)



EL BUTT HINGE
KAWNEER #037238



KAWNEER EL OFFSET PIVOT
KAWNEER #050392-RH
KAWNEER #050393-LH



OPTIONAL EL OFFSET PIVOT
KAWNEER #050397-RH
KAWNEER #050398-LH

AVAILABLE WITH	EPT	KAWNEER EL BUTT HINGE	KAWNEER EL OFFSET PIVOT	OPTIONAL EL OFFSET PIVOT
190/350/500 STANDARD	X	X	X	X
HEAVY WALL	X	X		X
TUFFLINE	X			
FLUSHLINE	X	X		X

TROUBLESHOOTING SP-1000X POWER SUPPLY AND PANELINE EL EXIT DEVICE

SYMPTOM	CAUSE	SOLUTION
Green AC Input LED is not lit	No AC input voltage	1. Verify 120 VAC input voltage. Check main input fuse.
Red LED is lit	Fire Alarm circuit is open	1. Verify FACP is reset and contact is closed. 2. If not connecting to FACP, place jumper between FA terminals
INP1 green LED blinking slow while Input IN1 is shorted Or INP2 green LED blinking slow while Input IN2 is shorted	Open circuit on output 1 Or Open circuit on output 2	1. Power down SP-1000X. 2. Remove all wires from O1 and O2. 3. Place a jumper between O1 - GND or O2 - GND. 4. Power up and short I1 or I2 for 10 seconds. A. Green LED still blinking slow? Contact Special Projects Group Tech Support 888-284-4774. B. Green LED blinking fast? Output shorted. Power supply is operating correctly. Remove jumper and check electric lock for open circuit.
INP1 green LED blinking fast while Input IN1 is shorted Or INP2 green LED blinking fast while Input IN2 is shorted	Circuit is shorted on output 1 Or Circuit is shorted on output 2	1. Power down SP-1000X. 2. Remove all wires from O1 and O2. 3. Power up and short I1 or I2 to GND terminal for 10 seconds. A. Green LED still blinking fast? Contact Special Projects Group Tech Support 888-284-4774. B. Green LED blinking slow? Output open. Power supply is operating correctly. Check wiring for short circuit.
Device unlocks and then immediately relocks	Door unlock time too short	Lengthen door unlock time.
	Two devices connected to one output	Refer to Special Projects Group point to point wiring diagram.
	Incorrect rod adjustment.	Refer to Paneline Installation Instruction manual 038371.
Device stays unlocked for too long	O1 and/or O2 time set too long	When using an access control device, use device to control the unlock time. Set O1 and O2 timers to minimum.
Power supply OK but device is not responding	Possible defective solenoid	Verify the coil resistance. 1.6 / 2.0 Ohm's (Red / Black) 40 / 60 Ohm's (Black / White)
	Defective coil commander	Replace coil commander.
	Poor or broken wire connection	Check all wiring connection including male and female plug connections. Check power transfer for continuity.
Intermittent EL device operation	Wire size too small or wire run too long	Replace wire with the correct gauge and or relocate the SP-1000X power supply closer to the entrance. Refer to wire run chart.
	Incorrect rod adjustment	Refer to Paneline Installation Instruction manual 038371.
	Poor power transfer connection	Inspect power transfer connection.
	Incorrect solenoid adjustment	Refer to solenoid plunger adjustment.
Rods not releasing upon electrical activation	Binding	1. Strike adjustment Top strike adjustment. Rotate strike and/or shim to eliminate binding. Bottom strike adjustment. Modify cutout to eliminate binding. 2. Door racked. Adjust door to eliminate bind. 3. Insufficient lubrication. Inspect all moving components for binding. Lubricate binding parts with a dry, non-oily, greaseless lubricant. 4. Excessive stack pressure. Contact building owner to have HVAC system adjusted.

Laws and building and safety codes governing the design and use of glazed entrance, window, and curtain wall products vary widely. Kawneer does not control the selection of product configurations, operating hardware, or glazing materials, and assumes no responsibility therefor.

Kawneer reserves the right to change configuration without prior notice when deemed necessary for product improvement.

© Kawneer Company, Inc., 2009