

## Column™ 9" & 36" Push Plate Switches



Listed  
Components

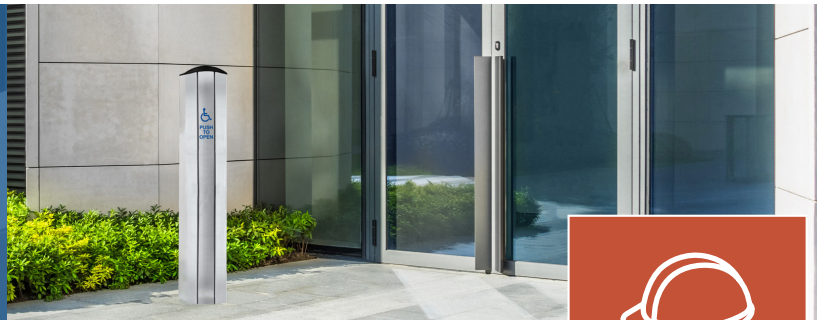


Compliant

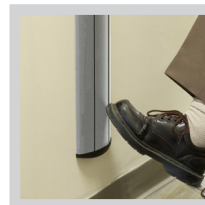


**Camden CM-75 Series Column™ switches offer greater user convenience and lower installation costs by providing a single activation device in place of two high/low switches, as required by a growing number of building codes across North America.**

CM-75 Series Column™ switches feature solid aluminum or stainless steel construction and are available in a range of finishes, with the option for Kinetic™ no-battery wireless or Lazerpoint RF™ battery powered wireless transmitters.



**BUILT CAMDEN  
TOUGH**



### Features

- Easily operated at any angle by hand, foot or body.
- Exceeds state and provincial building code requirements.
- Available in 9" and 36" sizes with clear, bronze or blue anodized finishes and stainless steel (36" only).
- Color matched with Camden aluminum, bronze and stainless steel switch mounting posts (bollards), in 42" and 48" tall sizes.
- (2) fully redundant SPDT switches, rated 15 Amps.
- Option for Kinetic™ no battery wireless transmitter\* or Lazerpoint RF™ transmitter and battery pack.
- Adjustable leveling screws for easy installation on uneven walls.



## SPECIFICATIONS

VOLTAGE:	12V or 24V AC/DC
CONTACT TYPE:	<b>CM-7509:</b> (1) SPDT Momentary, Form 'C' <b>CM-7536:</b> (2) SPDT Momentary, Form 'C'
CONTACT RATING:	15 Amps @ 30V DC
DIMENSIONS:	<b>CM-7509:</b> 5 7/8"W x 10 5/8"H x 1 1/2"D (150mm x 270mm x 38mm) <b>CM-7536:</b> 5 7/8"W x 37 1/2"H x 1 1/2"D (150mm x 953mm x 38mm)

## MODELS

<b>CM-7509</b>	9" Tall Column™ Push Plate Switch, Anodized Aluminum, option for Bronze or Blue finish
<b>CM-7536</b>	36" Tall Column™ Push Plate Switch, Anodized Aluminum, option for Bronze or Blue finish
<b>CM-7536SS</b>	36" Tall Column™ Push Plate Switch, Brushed Stainless Steel, US32 / 630

## OPTIONAL ARCHITECTURAL FINISHES

<b>-BRZ</b>	Add Suffix '-BRZ' to Model # for Anodized Dark Bronze finish (BHMA 710, 313AN)
<b>-BLU</b>	Add Suffix '-BLU' to Model # for Anodized Blue finish

## OPTIONAL WIRELESS

<b>K</b>	Add Suffix 'K' to Model # for (2) built-in Kinetic™ no-battery wireless transmitter switches.
<b>-TX</b>	Add Suffix '-TX' to Model # for (1) CM-TX-9 Lazerpoint RF™ wireless transmitter and alkaline battery pack, mounted in switch cap
<b>CM-RX90V2</b>	Kinetic™ and Lazerpoint RF™ compatible receiver

## WATERPROOFING OPTION

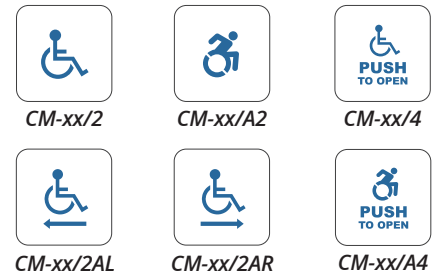
<b>-WT</b>	Add '-WT' to Product # for Boot & Water Tight Coating
------------	---

Optional DPDT Switch. DPDT switches not available. Use Camden CX-IRB relay if required.

## 9" & 36" PUSH PLATE SWITCHES

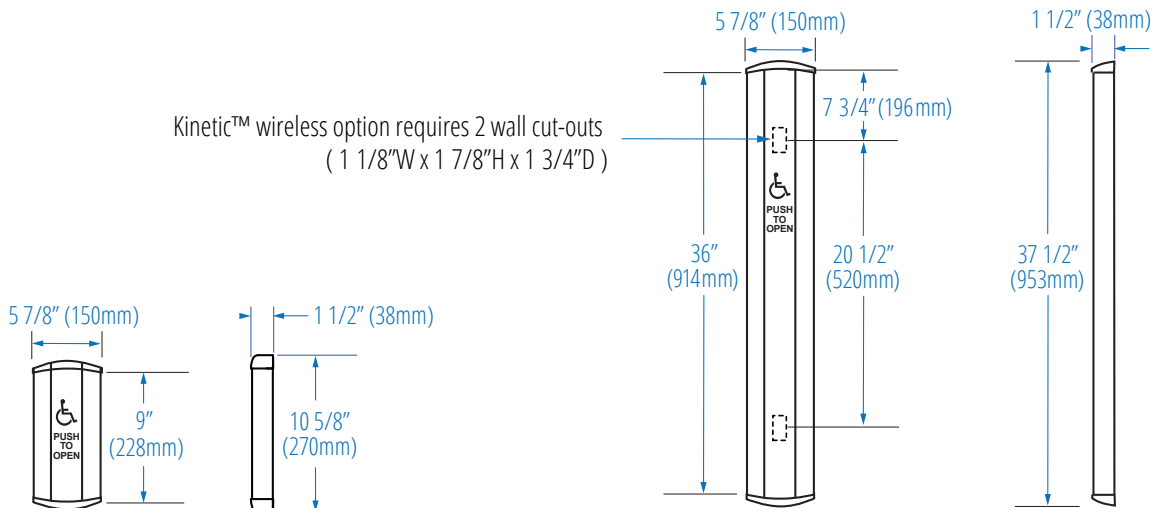


## GRAPHIC OPTIONS



Note: /2AL and /2AR not available on stainless steel model

## DIMENSIONS



CM-7509

CM-7536