

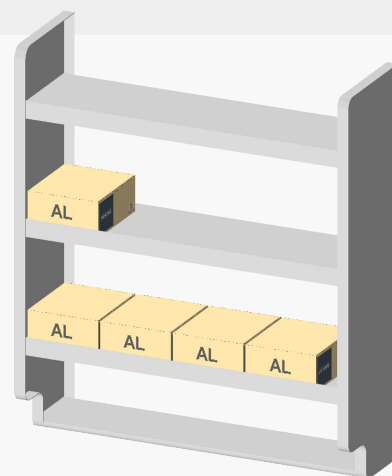


Schlage ALX Series

Grade 2 modular,
cylindrical lock

The proven AL Series has evolved. "X Factor" qualities born from modular design, define a new lock that exceeds expectations.

AL Series has always offered a combination of strength and durability at a price point favorable to any application. Though these qualities remain, the lock has changed. Its evolution to the ALX Series is a revolution in lock design. Modularity lets you do more with less inventory and problem solve in the moment with field-configurable solutions that could dramatically reduce callbacks when unplanned needs arise.

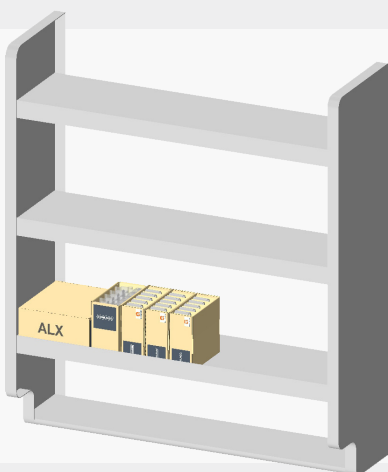


Legacy AL Series example:

- 5 factory-configured locks in 10, 40, 50, 53, and 80 functions (less cylinder)
- 1 finish – 626
- 1 lever design – Saturn

Cost: \$475 @45% of list

Use: 5 specific lock configurations only



New ALX Series example:

- 1 modular chassis supporting all functions and cylinder options in 626 finish
- 1 locksmith function kit in 2 3/4" backset containing five functions: 10, 40, 50, 53, and 80 (4 functions also support Vandlgard)
- 1 lever design – Saturn, in 3 variations: KIL, Button, and Closed

Cost: \$265 @45% of list

Remaining inventory value after 1 service call – **\$173**

Creates any of 9 different lock configurations

The X Factor

A lock designed to exceed expectations

Exceptional durability and expanded cylinder and lever options are just part of the ALX story. You also get extreme installation simplicity and speed – on the door in just over a minute; and excellent warranty coverage – a 10-year limited warranty, so you know it's going to last. In all, ALX Series is an unexpected value for both you and your customers. Designed as a modular lock and built on a single chassis, the Schlage ALX Series provides an advantage both on the job site and in the warehouse. Flexible buying options means you can purchase it configured, as lock less lever or in kitted form as separate chassis, function and lever kits each ladder up to the same list price.

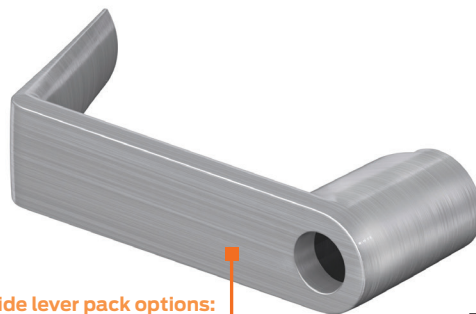
Example lock: ALX50 P6 SAT 626

50 Entrance/office function, Conventional Everest S123 keyway, Saturn lever, 626 finish

How sold	Lock or chassis kit	Function (1/5 of kit)	Core + tailpiece (Ev 29 bulk price)	Outside lever (1/5 of kit)	Inside lever (1/5 of kit)	Total list
Configured	\$271	—	—	—	—	\$271
Less lever	\$181	—	\$64	\$13	\$13	\$271
Kits	\$124	\$57	\$64	\$13	\$13	\$271

Extreme installation simplicity

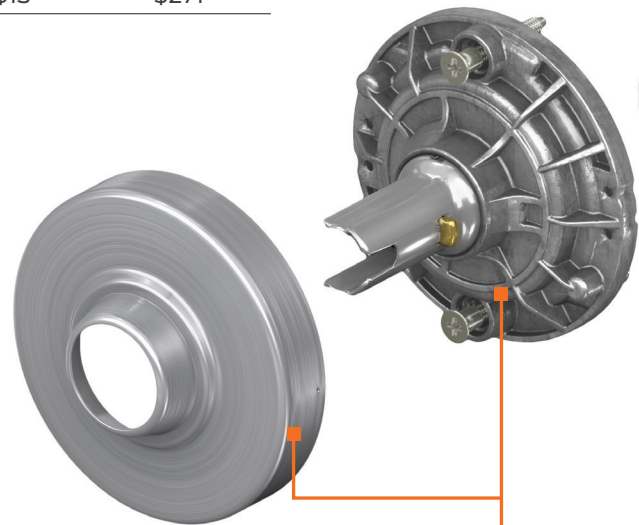
- Accommodates 1 ³/₈" to 1 ³/₄" door thickness with minimal chassis adjustment
- Captured screws in latch, strike and inside spring cage eliminate small, loose parts



Inside lever pack options:
CL - closed (no hole)
BT - button

Expansive lever offering

Perfectly suites with ND Series levers to offer 10 total lever designs



Chassis kit components

Exceptional durability

- Deep-drawn spindle with 5 points of lever engagement prevents droop and wobble
- Grade 1 compression springs

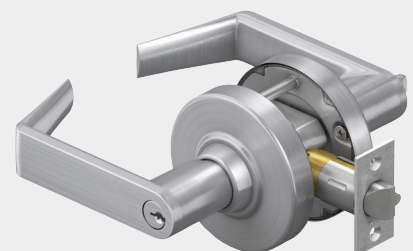
What could you do with this much flexibility?

Just one chassis in your warehouse and on your trucks in your market's most prevalent finish and lever style can become whatever you may need in the moment:

- 1 chassis kit in 626 finish
- + 2 locksmith assortment function kits in both 2 ³/₄" and 2 ³/₈" backsets
- + 3-4 lever types
(button, closed, and two to fit your most commonly used cylinders)
- = Any of 16 different lock configurations

Levers are sold in 5-packs of one design. You can mix and match your own variety packs and buy single function 5-packs or the locksmith function mix to help you optimize truck stock. (Locksmith mix function kit: 10 passage; 40 bath/bedroom privacy; 50 entrance/office; 53 entrance; and 80 storeroom)

Schlage ALX Series can be purchased as a fully configured lock or as configurable kits for warehouse and jobsite flexibility.



Maximum utility
One chassis fits all functions and cores to minimize inventory

Chassis kit component

Outside lever pack options:
CL - closed (no hole)
KIL - also used on privacy
FSIC
SFIC

Expanded cylinder support
Available levers accept all Schlage plus five competitive cylinder formats

Function kit components
Kits include appropriate latch, interior, and exterior components to create the desired function

Chassis kit component

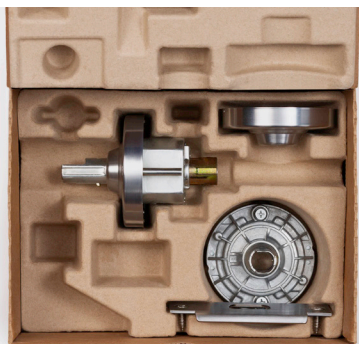
Function kit components

Function kit components

Function flexibility

- Patent pending chassis design allows quick, in-field function set up
- Field reversible Vandlgard® to non-Vandlgard locked lever engagement

Exceeds Grade 2 strength expectations
Stainless steel latchbolt



Chassis kits are chosen solely by desired finish. They are shipped non-Vandlgard and can be configured to Vandlgard without the need for extra parts.



Function kits are sold in packs of five defined by function, finish, and latch backset. Locksmith assortment kits are available.



Levers are sold in five packs of same design with inside levers defined by function, finish and design and outside levers by function/cylinder, finish and design.

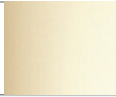





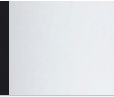


Standard specifications

Other options available, see catalog or price book for details.

Chassis	Material: Steel, zinc dichromated for corrosion resistance Door thickness: Fits 1 3/8" to 1 3/4" doors without adjustment Handing: Non-handed
Functions	Non-keyed functions: 10 Passage; 40 Privacy; 44 Hospital privacy; 170 Single dummy; 172 Double dummy Keyed functions: 50 Entrance/office; 53 Entrance; 70 Classroom; 80 Storeroom
Trim	Levers: Pressure cast zinc, plated to match product finish Roses: Wrought brass, bronze or zinc plated to match finish, 3 7/16" diameter; blank outside rose is 3 1/2" diameter
Latches	Backset: 2 3/4" (standard) or 2 3/8" Faceplate: 1 1/8" x 2 1/4" square corners Bolt: 7/8" bolt diameter, up to 1" housing diameter, 1/2" throw in Stainless Steel Optional: 1" bolt diameter with 1/2" throw, 3/4" anti-friction fire latch
Strike	ANSI curved lip (1 1/4" x 4 7/8" x 1 3/16") Optional: T strike (see catalog for details)
Keying	Cylinder format: Conventional 6-pin in solid brass Optional: SL Conventional and FSIC; Full Size and Small Format IC cylinders; construction cylinders Keyway: Everest 29 S123 patented open keyway, keyed different Optional: Classic open, Everest 29 restricted and legacy keyways
Warranty	10-year limited
Certifications	Exceeds ANSI/BHMA A156.2 Series 4000, Grade 2 standards UL/cUL: All locks listed for A label single fire door 4' x 8' and pair doors UL 437: Optional UL listed high-security cylinders Other: ADA compliant levers (all designs); CA Fire Code compliant levers (all with return of 1/2" (64 mm) or less; ICC A117.1 compliant; meets Federal FF-H-106C Series 161; meets FL Building Code and Miami Dade requirements for hurricanes

Vandlgard® protection

All locking functions feature field reversible Vandlgard® protection. The outside lever rotates freely up and down when locked, limiting the ability of vandals to apply excessive force which could damage the lock.

Finish options									
Color	Bright Brass	Satin Brass	Satin Bronze	Oil Rubbed Bronze	Satin Nickel	Matte Black	Bright Chrome	Satin Chrome	Aged Bronze
ANSI/BHMA number	605	606	612	613	619	622	625	626/626AM	643e

Lever designs

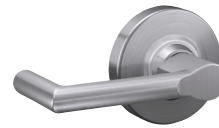
Athens (ATH)



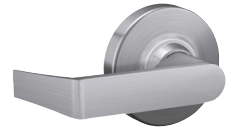
Omega (OME)



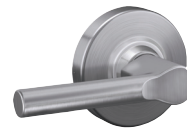
Boardwalk (BRK)



Rhodes (RHO)



Broadway (BRW)



Saturn (SAT)



Latitude (LAT)



Sparta (SPA)



Longitude (LON)



Tubular (TLR)



About Allegion

Allegion (NYSE: ALLE) is a global pioneer in seamless access, with leading brands like CISA®, Interflex®, LCN®, Schlage®, SimonsVoss® and Von Duprin®. Focusing on security around the door and adjacent areas, Allegion secures people and assets with a range of solutions for homes, businesses, schools and institutions. Allegion had \$2.7 billion in revenue in 2018, and sells products in almost 130 countries. For more, visit www.allegion.com.



ALLEGION™

KRYPTONITE ■ LCN ■  ■ STEELCRAFT ■ VON DUPRIN

© 2019 Allegion
013371, Rev. 12/19
www.allegion.com/us