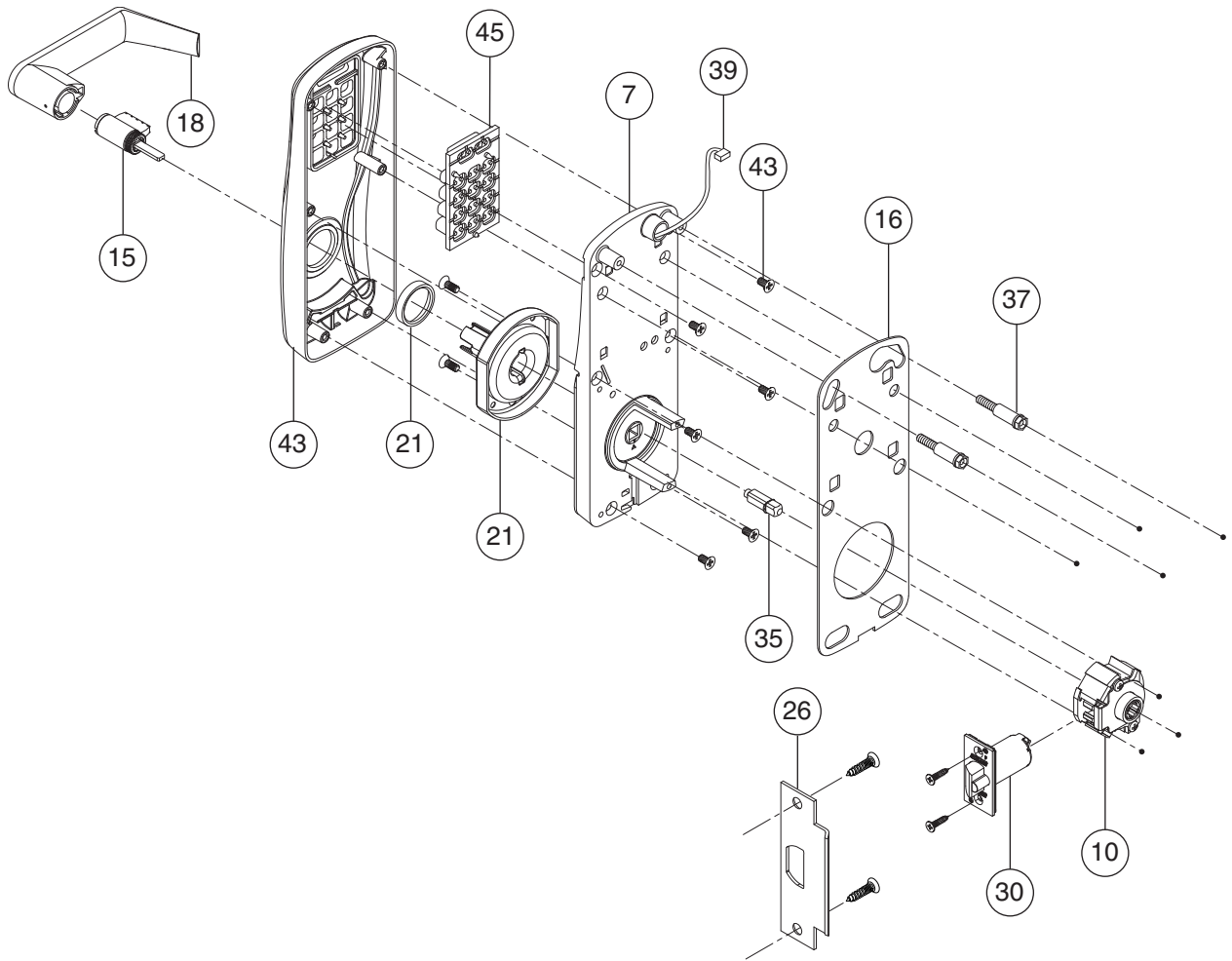


CO-100-CY Keypad Only, Exterior



No.	Description	Part no.
7‡	Baseplate Assembly, CY	23599095
10	Latch Retractor	46928800
15*	Cylinder	See pg. 47
16	Gasket Kit (includes baseplate, spindle and reader gaskets)	47260740
18* ◇	Lever, KIL	03-231
	Lever, FSIC	03-232
	Lever, SFIC	03-200
21**	Spring Cage Assembly (includes 2 screws)	47258543
26*	Strike (includes 2 screws)	See pg. 54
30*	Latch (includes 2 screws)	13-247
35◆	Spindle	See pg. 43
37◆	Baseplate Stand-Offs	See pg. 43
39	Wiring Harness	Classroom/Storeroom 23518392
		Office/Privacy 23518384

No.	Description	Part no.
43*	Escutcheon, Keypad Only, CY (with screws)	47260707
45	Keypad Membrane	44487247

* Must specify finish.

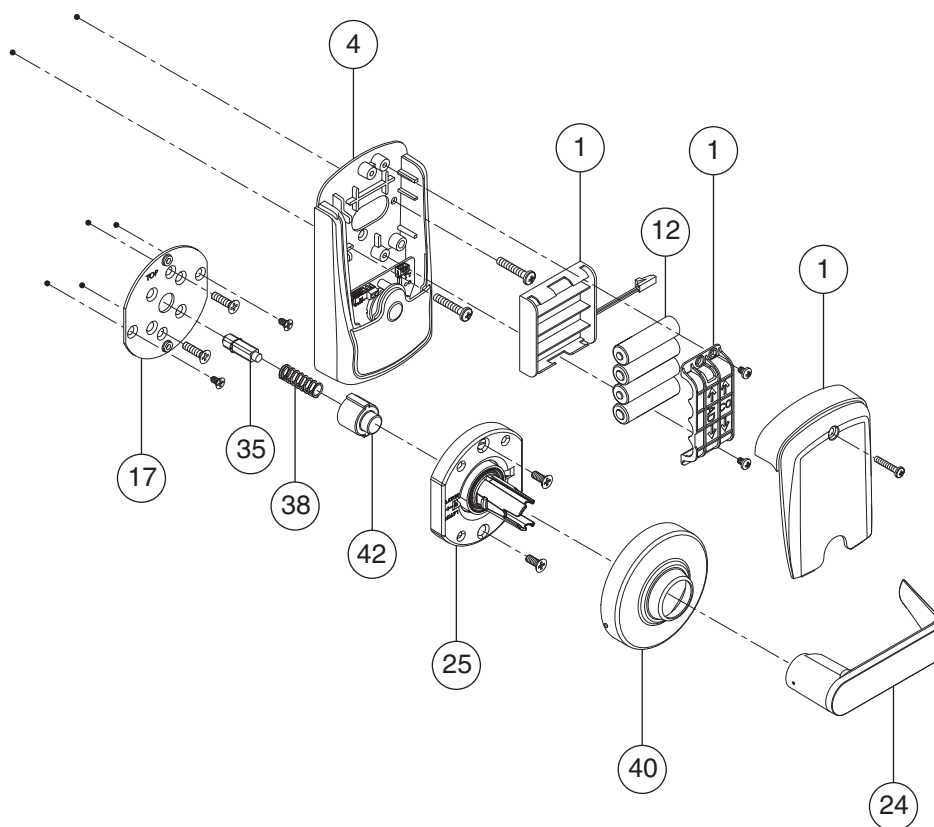
** For competitor outside spring cages, see page 46.

◆ This item only available as part of door thickness kit, see page 43.

‡ Must specify cylinder type and handing.

◇ For competitor outside levers, see page 45.

CO-100-CY Keypad Only, Interior



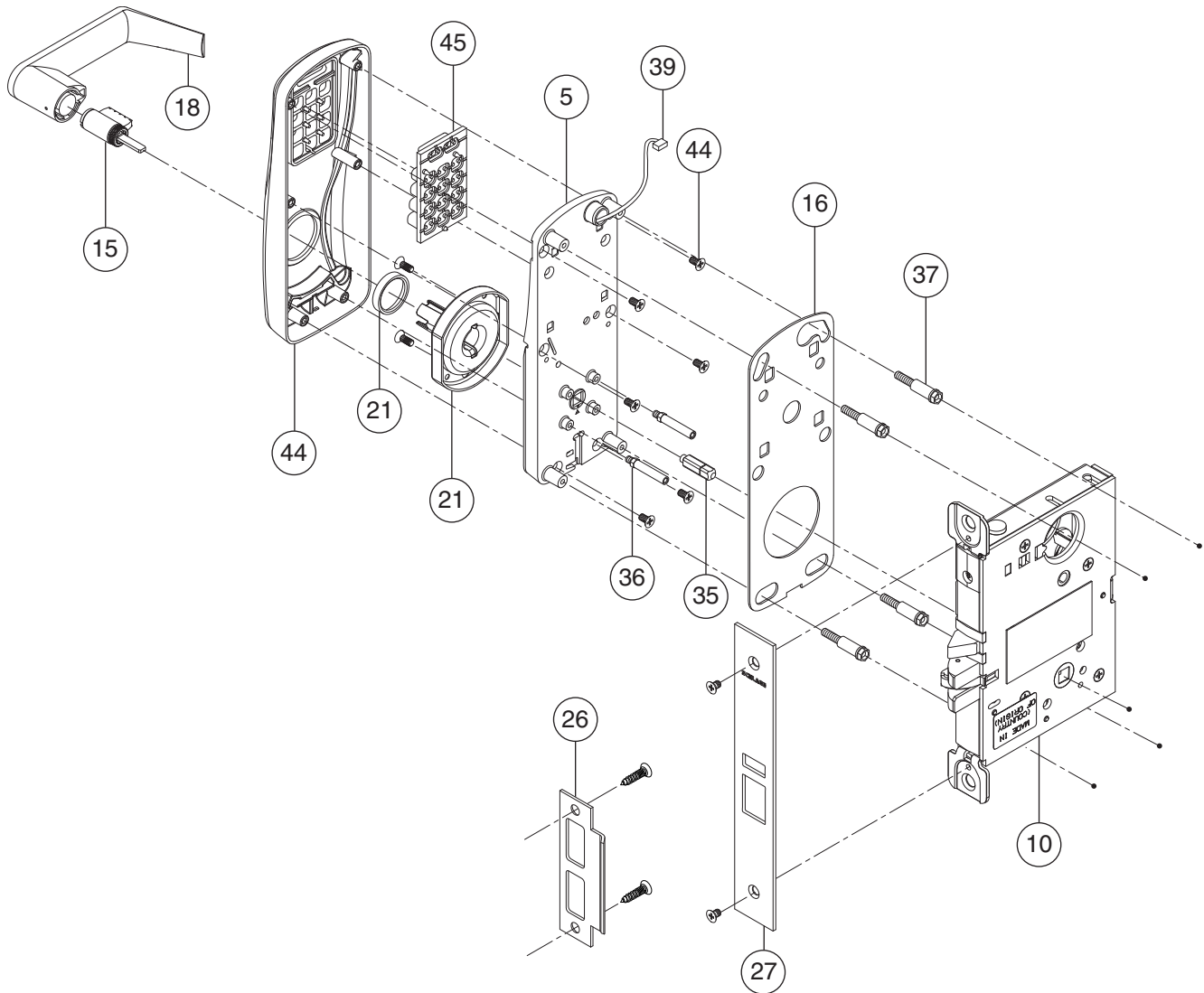
No.	Description		Part no.
1*	4AA Battery Holder and Cover Kit	4AA Battery Holder	4B-CM
		4AA Battery Strap	
		Screws, Battery Strap (2)	
		4AA Battery Cover	
		Screw, Battery Cover (1)	
4*	Escutcheon, without IPB (inside push button) (with screws)		23599327
	Escutcheon, with IPB (inside push button) (with screws)		23599335
12	Batteries, AA (alkaline only)		F206-488
17	Inside Mounting Plate Kit (includes 4 screws)		23599244
24*	Lever, Inside		03-230
25	Spring Cage Assembly (includes 2 screws)		47260717
35♦	Spindle		See pg. 43

No.	Description	Part no.
38	Spindle Spring	44484996
40*	Rose, Inside	03-042-RHO
42	Hub (10-piece bulk pack)	23599228

* Must specify finish.

♦ This item only available as part of door thickness kit, see page 43.

CO-100-MS Keypad Only, Exterior



No.	Description		Part no.
5‡	Baseplate Assembly, MS		23599103
10	Lock Case Assembly, Narrow, 1 1/16" wide		46928818
	Lock Case Assembly, 1 1/4" wide		46928826
15*	Cylinder		See pg. 47
16	Gasket Kit (includes baseplate, spindle and reader gaskets)		47260740
18* ◇	Lever, KIL		03-231
	Lever, FSIC		03-232
	Lever, SFIC		03-200
21**	Spring Cage Assembly (includes 2 screws)		47258543
26*	Strike (includes 2 screws)		See pg. 54
27*	Armor Front, MS/MD (includes 2 screws)	1 1/4" Wide	09-663
		1 1/16" Wide	09-669
35◆	Spindle		See pg. 43

No.	Description		Part no.
36◆	Stand-Offs, MS/MD		See pg. 43
37◆	Baseplate Stand-Offs		See pg. 43
39	Wiring Harness	Classroom/Storeroom	23518392
		Office/Privacy	23518384
44*	Escutcheon, Keypad Only, MS/MD (with screws)		47260707
45	Keypad Membrane		44487247

* Must specify finish.

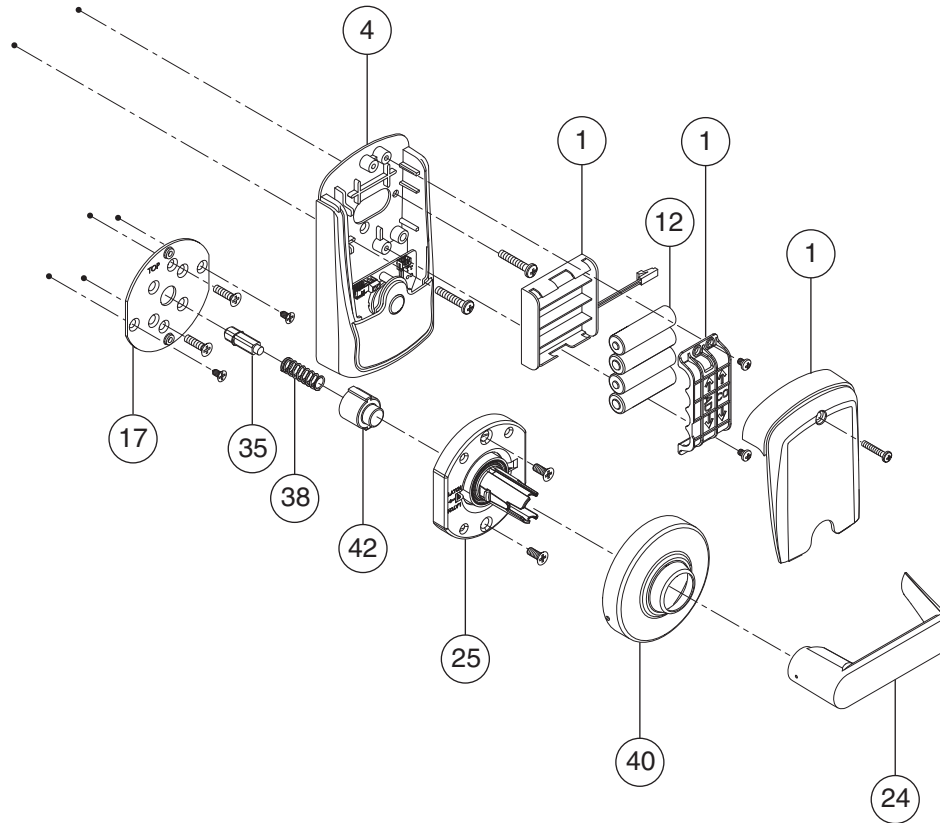
** For competitor outside spring cages, see page 46.

◆ This item only available as part of door thickness kit, see page 43.

‡ Must specify cylinder type and handing.

◇ For competitor outside levers, see page 45.

CO-100-MS Keypad Only, Interior



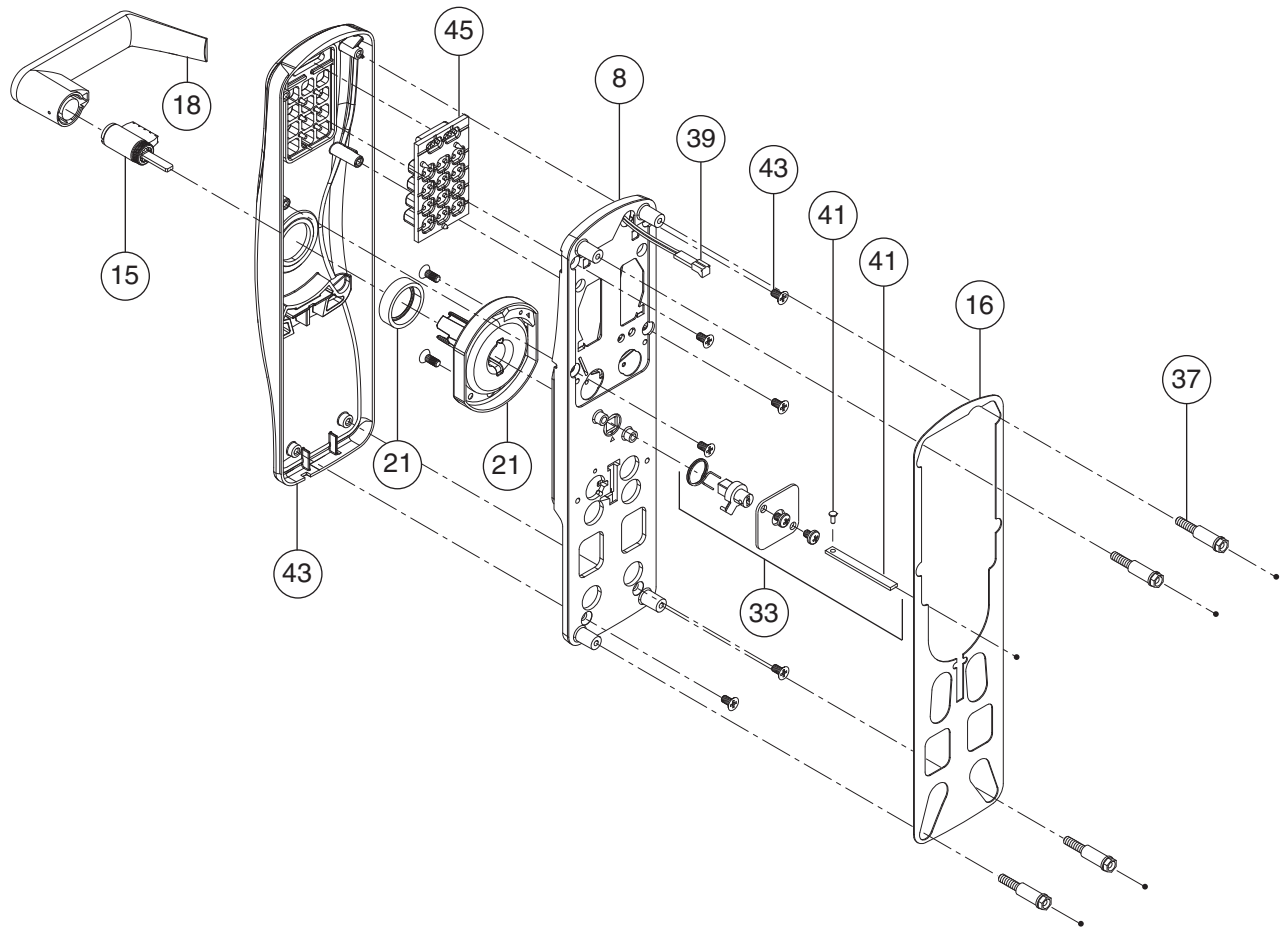
No.	Description	Part no.
1*	4AA Battery Holder and Cover Kit	4AA Battery Holder
		4AA Battery Strap
		Screws, Battery Strap (2)
		4AA Battery Cover
		Screw, Battery Cover (1)
4*	Escutcheon, without IPB (inside push button) (with screws)	23599327
	Escutcheon, with IPB (inside push button) (with screws)	23599335
12	Batteries, AA (alkaline only)	F206-488
17	Inside Mounting Plate Kit (includes 4 screws)	23599244
24*	Lever, Inside	03-230
25	Spring Cage Assembly (includes 2 screws)	47260717
35♦	Spindle	See pg. 43

No.	Description	Part no.
38	Spindle Spring	44484996
40*	Rose, Inside	03-042-RHO
42	Hub (10-piece bulk pack)	23599228

* Must specify finish.

♦ This item only available as part of door thickness kit, see page 43.

CO-100-993-R Keypad Only, Exterior



No.	Description		Part no.
8‡	Baseplate Assembly, 993		47260716
15*	Cylinder		See pg. 47
16	Gasket Kit (includes baseplate, spindle and reader gaskets)		47260741
18* ♦	Lever, KIL		03-231
	Lever, FSIC		03-232
	Lever, SFIC		03-200
21**	Spring Cage Assembly (includes 2 screws)		47258545
33	Spindle and Hub Kit, 993	Tailpiece	46929295
		Twisted Tailpiece	
		Clip, Tailpiece	
		Cover, Spindle, 993	
		Screws, Spindle Cover	
		Hub	
		Spring, Tailpiece, 993	
37♦	Baseplate Stand-Offs		See pg. 43

No.	Description	Part no.
39	Wiring Harness, Classroom/Storeroom	23518392
41	Tailpiece Kit, 993 (includes clip)	46929303
43	Escutcheon, Keypad Only, 993 (with screws)	47260708
45	Keypad Membrane	44487247

* Must specify finish.

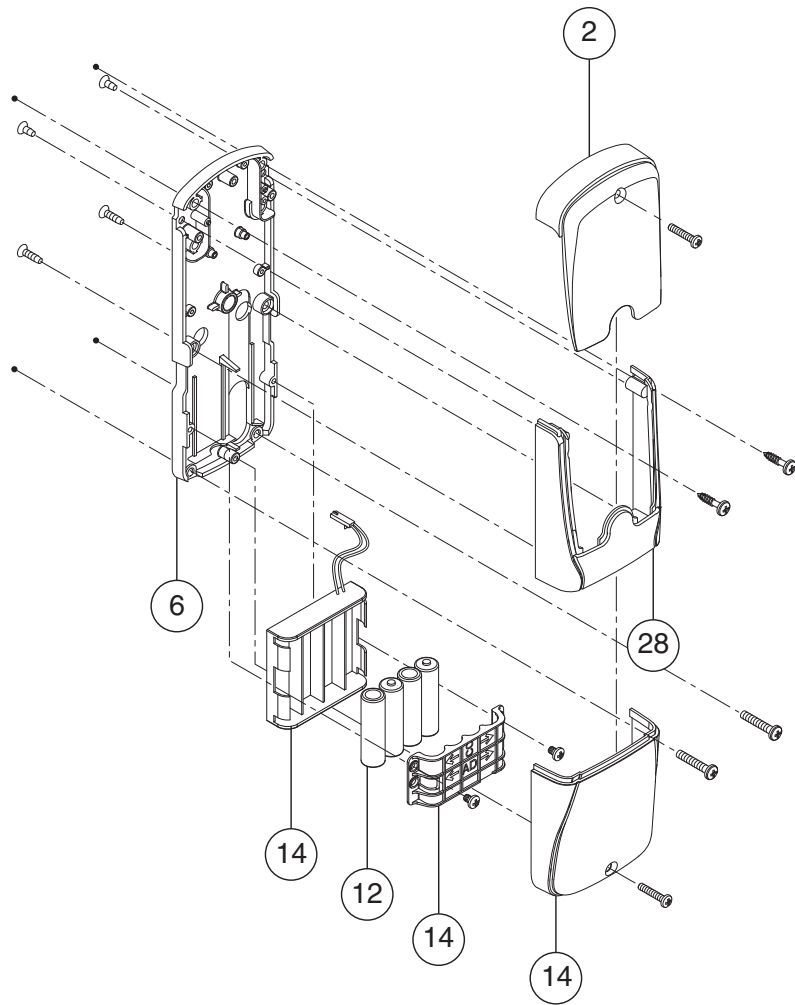
** For competitor outside spring cages, see page 46.

♦ This item only available as part of door thickness kit, see page 43.

‡ Must specify cylinder type and handing.

◇ For competitor outside levers, see page 45.

CO-100-993-R Keypad Only, Interior

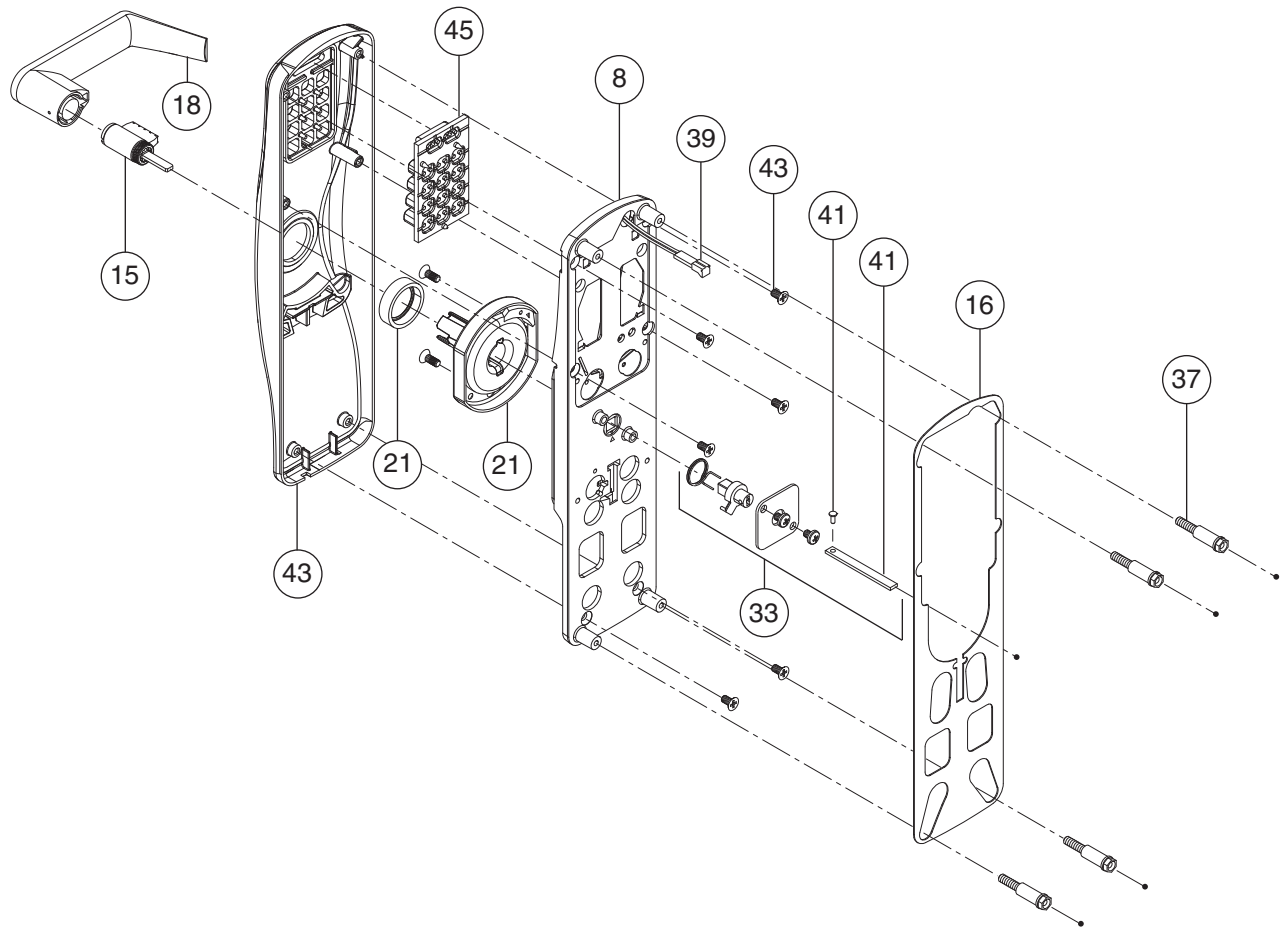


No.	Description		Part no.
2*	Cover (includes 1 screw)		COM200C
6	Baseplate Assembly, 993		23599251
12	Batteries, AA (alkaline only)		F206-488
14*	4AA Battery Holder and Cover Kit	4AA Battery Holder	4B-E
		4AA Battery Strap	
		Screws, Battery Strap (2)	
		4AA Battery Cover	
		Screw, Battery Cover (1)	
28*	Escutcheon, 993 (with screws)		46929279

Note: For doors with existing large cutout, order exit device mounting hardware kit, see page 52.

* Must specify finish.

CO-100-993-S Keypad Only, Exterior



No.	Description		Part no.
8‡	Baseplate Assembly, 993		47260716
15*	Cylinder		See pg. 47
16	Gasket Kit (includes baseplate, spindle and reader gaskets)		47260741
18* ♦	Lever, KIL		03-231
	Lever, FSIC		03-232
	Lever, SFIC		03-200
21**	Spring Cage Assembly (includes 2 screws)		47258545
33	Spindle and Hub Kit, 993	Tailpiece	46929295
		Twisted Tailpiece	
		Clip, Tailpiece	
		Cover, Spindle, 993	
		Screws, Spindle Cover	
		Hub	
		Spring, Tailpiece, 993	
37♦	Baseplate Stand-Offs		See pg. 43

No.	Description	Part no.
39	Wiring Harness, Classroom/Storeroom	23518392
41	Tailpiece Kit, 993 (includes clip)	46929303
43*	Escutcheon, Keypad Only, 993 (with screws)	47260708
45	Keypad Membrane	44487247

* Must specify finish.

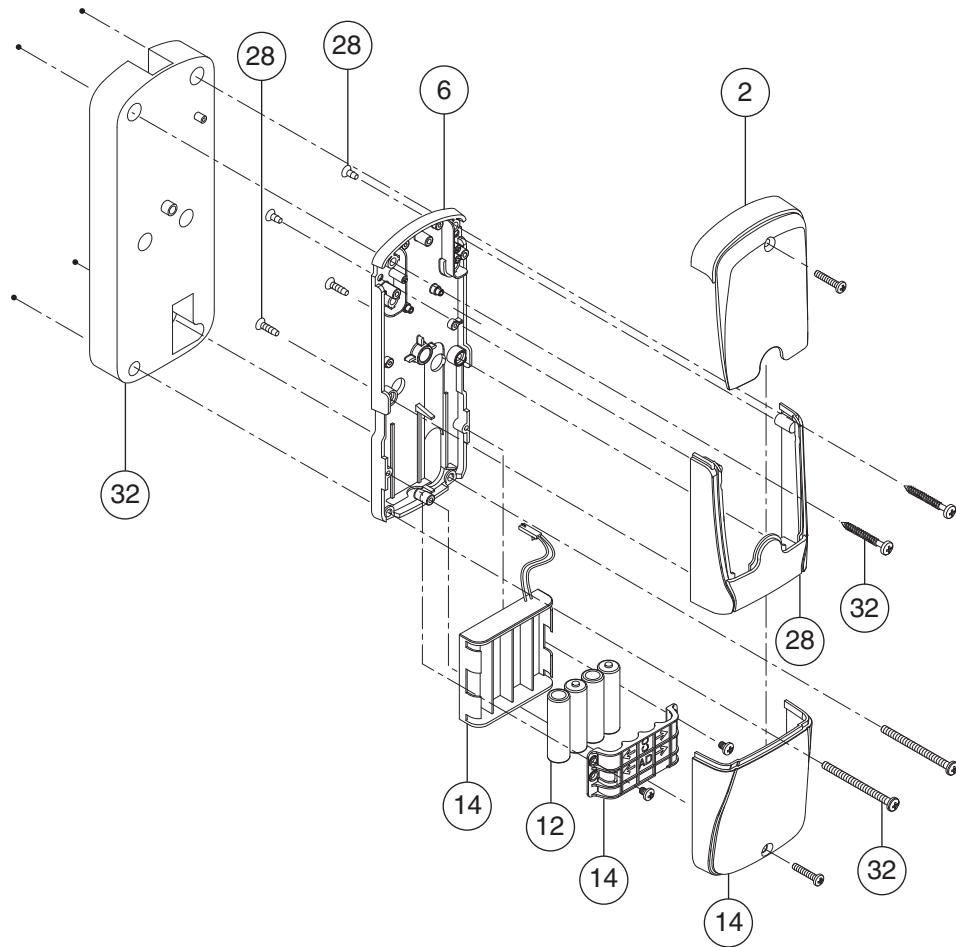
** For competitor outside spring cages, see page 46.

♦ This item only available as part of door thickness kit, see page 43.

‡ Must specify cylinder type and handing.

◇ For competitor outside levers, see page 45.

CO-100-993-S Keypad Only, Interior

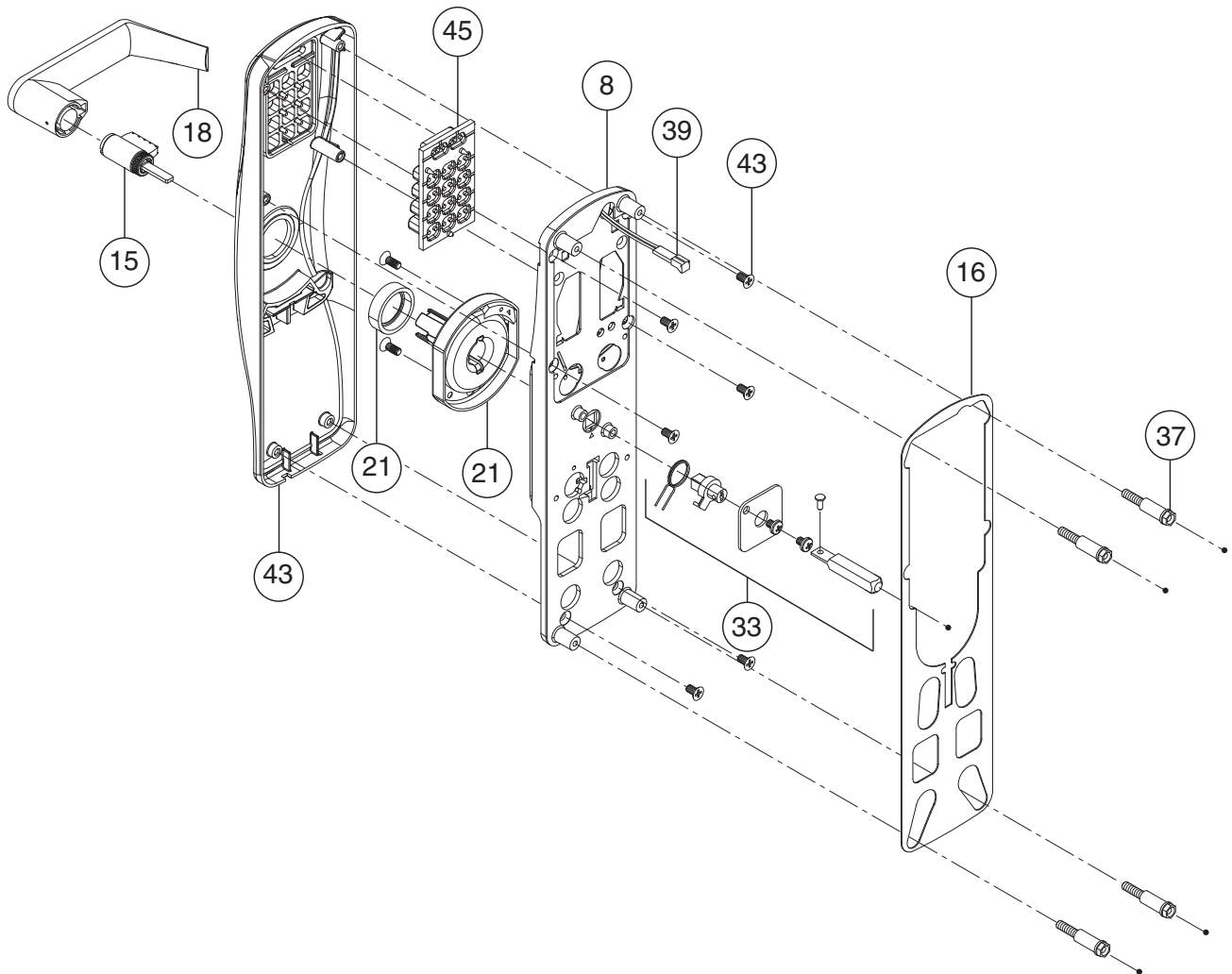


No.	Description	Part no.
2*	Cover (includes 1 screw)	COM200C
6	Baseplate Assembly, 993	23599251
12	Batteries, AA (alkaline only)	F206-488
14*	4AA Battery Holder and Cover Kit	4B-E
	4AA Battery Holder	
	4AA Battery Strap	
	Screws, Battery Strap (2)	
	4AA Battery Cover	
	Screw, Battery Cover (1)	
28*	Escutcheon, 993 (with screws)	46929279
32	Baseplate Spacer, 993-S (with screws)	46929238

Note: For doors with existing large cutout, order exit device mounting hardware kit, see page 52.

* Must specify finish.

CO-100-993-M Keypad Only, Exterior



No.	Description	Part no.
8‡	Baseplate Assembly, 993	47260716
15*	Cylinder	See pg. 47
16	Gasket Kit (includes baseplate, spindle and reader gaskets)	47260741
18* ♦	Lever, KIL	03-231
	Lever, FSIC	03-232
	Lever, SFIC	03-200
21**	Spring Cage Assembly (includes 2 screws)	47258545
33	Spindle and Hub Kit, 993	Spindle, Exit Mortise
		Clip, Tailpiece
		Cover, Spindle, 993
		Screws, Spindle Cover
		Hub
		Spring, Tailpiece, 993
37♦	Baseplate Stand-Offs	See pg. 43

No.	Description	Part no.
39	Wiring Harness, Classroom/Storeroom	23518392
43*	Escutcheon, Keypad Only, 993 (with screws)	47260708
45	Keypad Membrane	44487247

* Must specify finish.

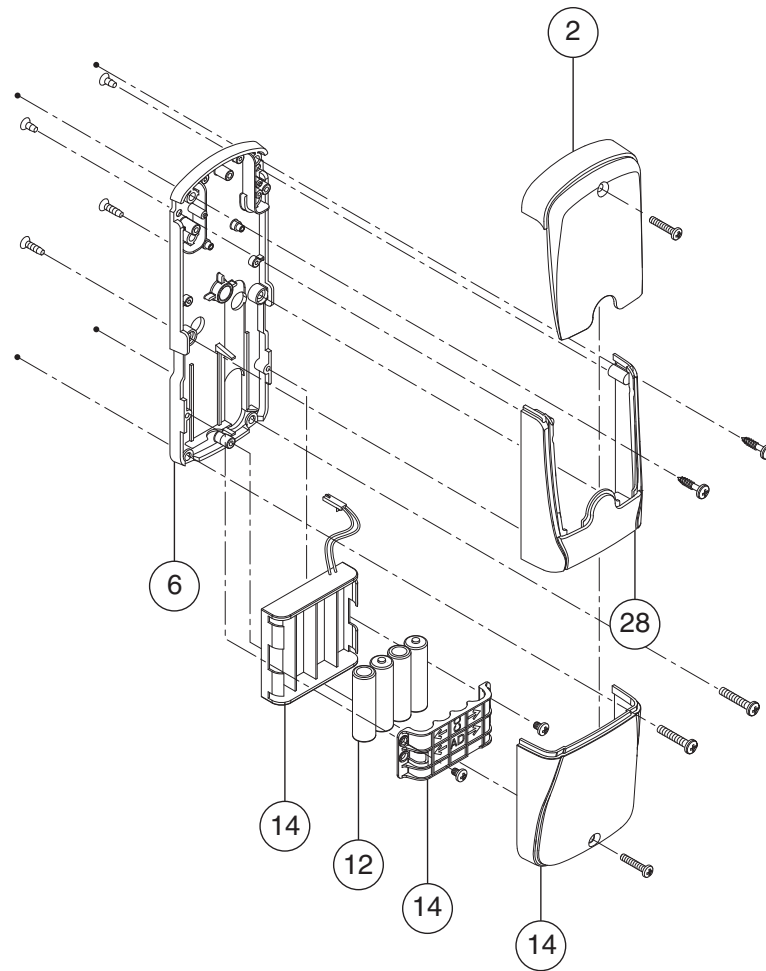
** For competitor outside spring cages, see page 46.

♦ This item only available as part of door thickness kit, see page 43.

‡ Must specify cylinder type and handing.

◇ For competitor outside levers, see page 45.

CO-100-993-M Keypad Only, Interior

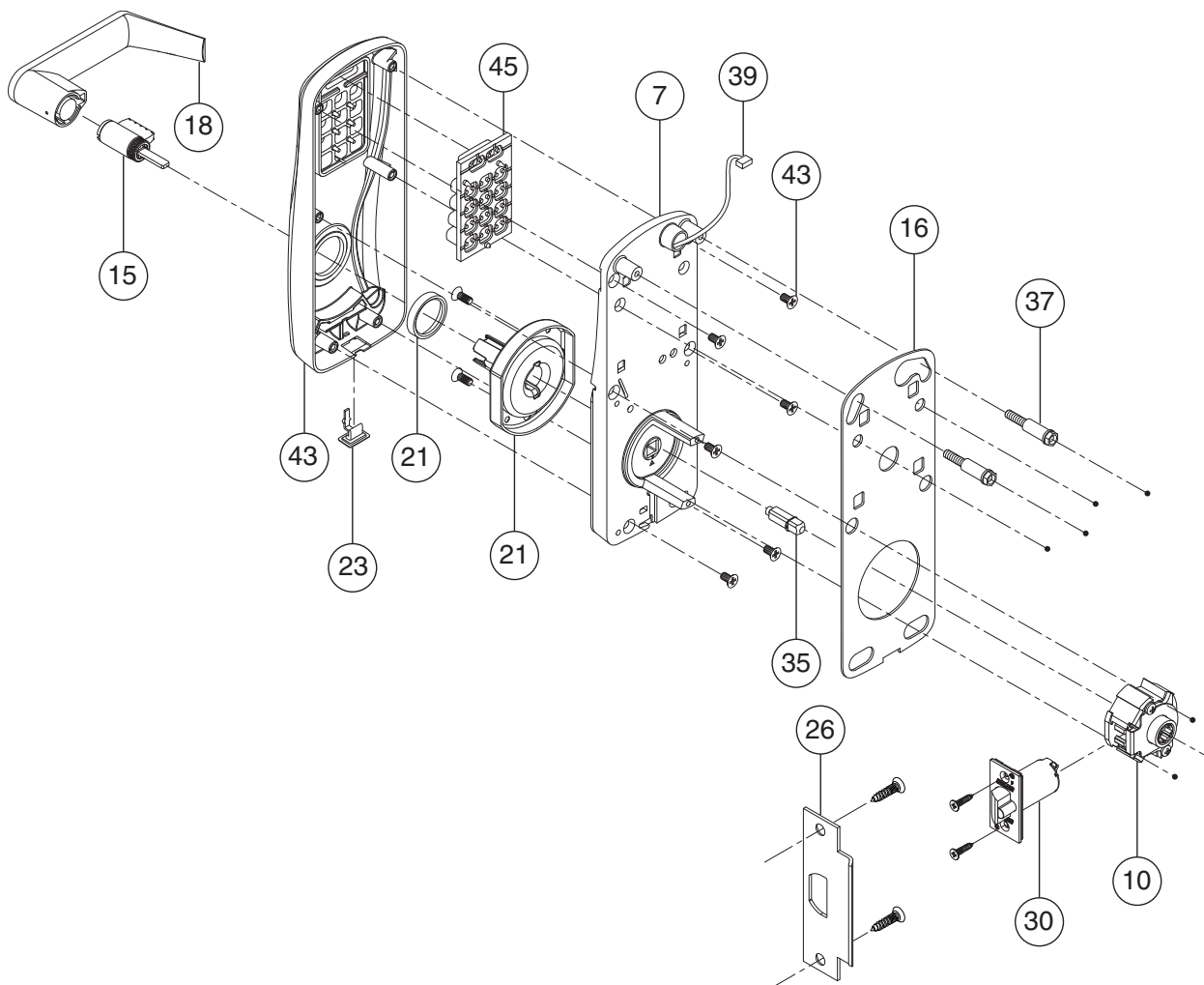


No.	Description		Part no.
2*	Cover (includes 1 screw)		COM200C
6	Baseplate Assembly, 993		23599251
12	Batteries, AA (alkaline only)		F206-488
14*	4AA Battery Holder and Cover Kit	4AA Battery Holder	4B-E
		4AA Battery Strap	
		Screws, Battery Strap (2)	
		4AA Battery Cover	
		Screw, Battery Cover (1)	
28*	Escutcheon, 993 (with screws)		46929279

Note: For doors with existing large cutout, order exit device mounting hardware kit, see page 52.

* Must specify finish.

CO-200-CY Keypad Only, Exterior



No.	Description	Part no.
7‡	Baseplate Assembly, CY	23599095
10	Latch Retractor	46928800
15*	Cylinder	See pg. 47
16	Gasket Kit (includes baseplate, spindle and reader gaskets)	47260740
18* ♦	Lever, KIL	03-231
	Lever, FSIC	03-232
	Lever, SFIC	03-200
21**	Spring Cage Assembly	47258543
23	USB Cover (10-piece bulk pack)	46928719
26*	Strike (includes 2 screws)	See pg. 54
30*	Latch Assembly (includes 2 screws)	13-247
35♦	Spindle	See pg. 43
37♦	Baseplate Stand-Offs	See pg. 43

No.	Description		Part no.
39	Wiring Harness	Classroom/Storeroom	23518392
		Office/Privacy	23518384
43*	Escutcheon, Keypad Only, CY (with screws)		47260705
45	Keypad Membrane		44487247

* Must specify finish.

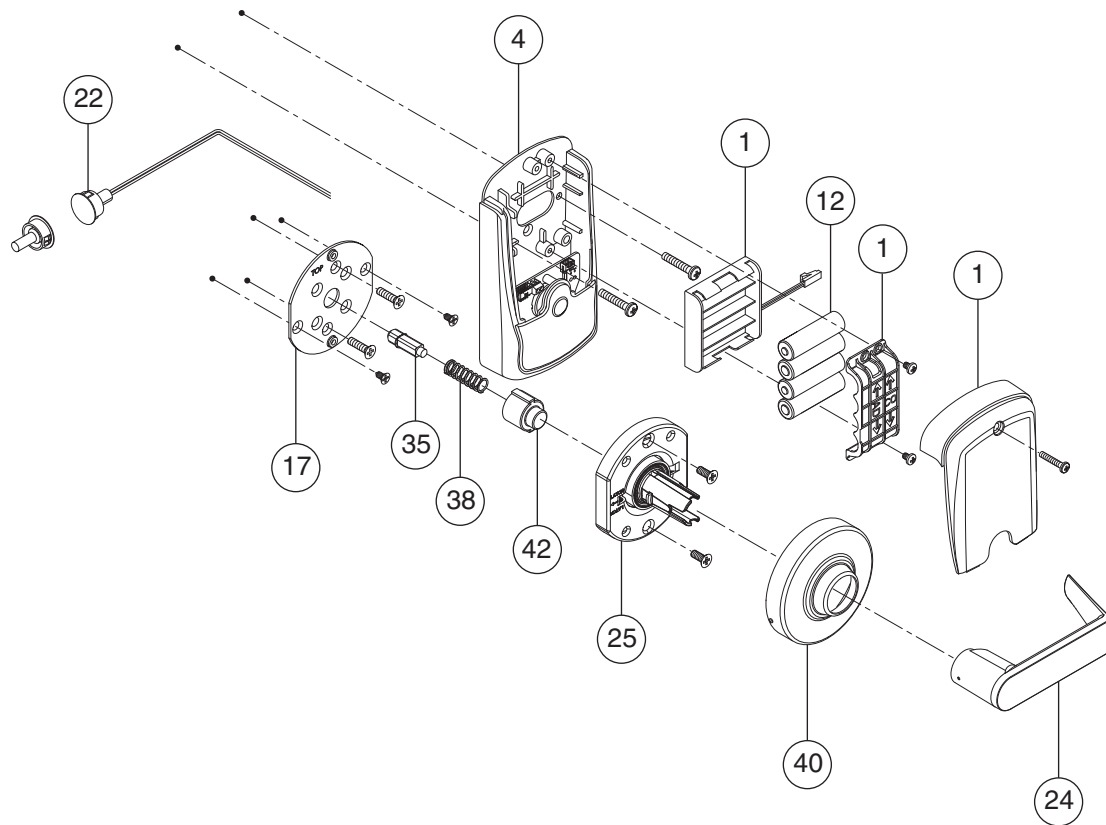
** For competitor outside spring cages, see page 46.

♦ This item only available as part of door thickness kit, see page 43.

‡ Must specify cylinder type and handing.

◇ For competitor outside levers, see page 45.

CO-200-CY Keypad Only, Interior



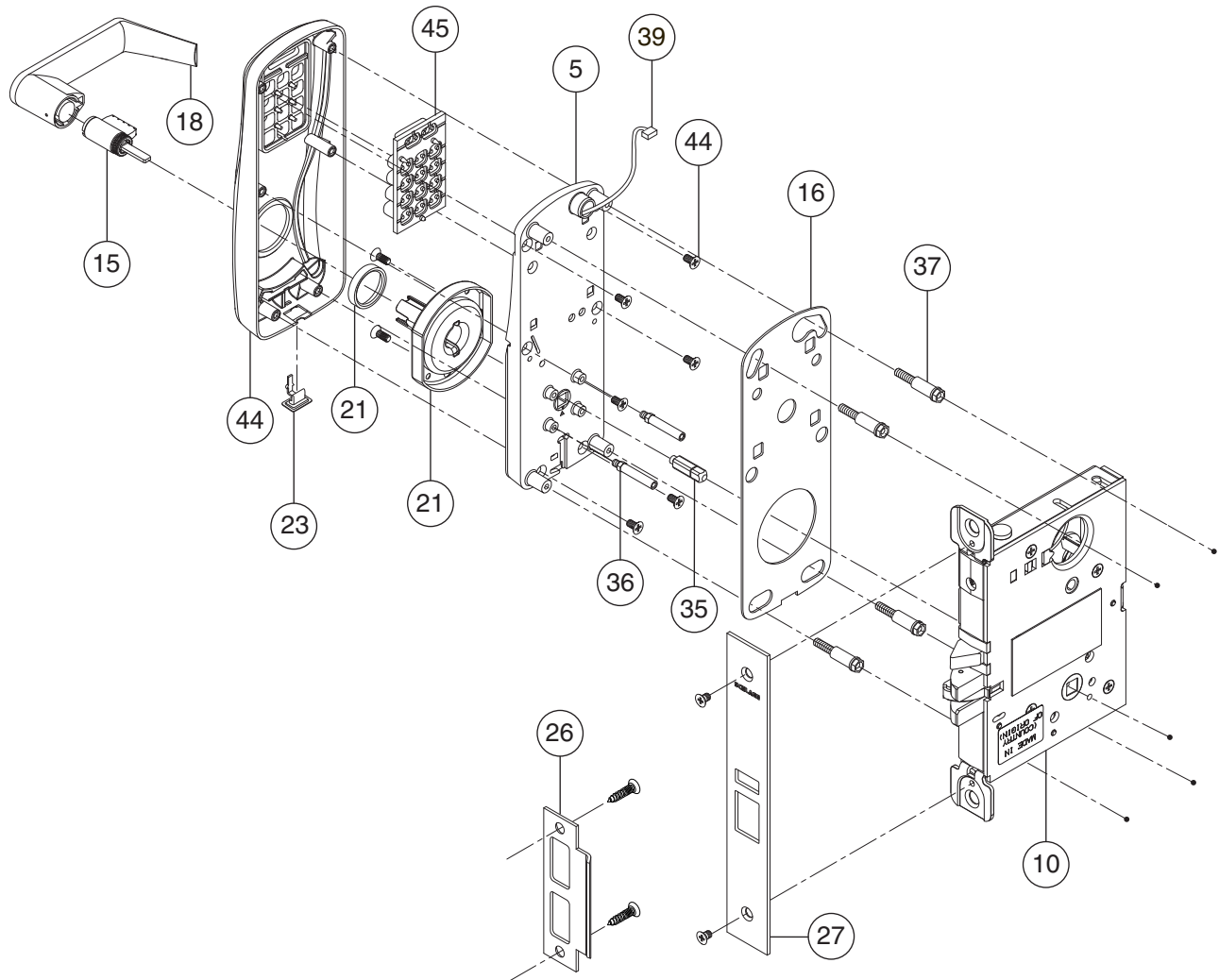
No.	Description	Part no.
1*	4AA Battery Holder and Cover Kit	4AA Battery Holder
		4AA Battery Strap
		Screws, Battery Strap (2)
		4AA Battery Cover
		Screw, Battery Cover (1)
4*	Escutcheon, without IPB (inside push button) (with screws)	23599327
	Escutcheon, with IPB (inside push button) (with screws)	23599335
12	Batteries, AA (alkaline only)	F206-488
17	Inside Mounting Plate Kit (includes 4 screws)	23599244
22	Door Position Switch	46929121
24*	Lever, Inside	03-230

No.	Description	Part no.
25	Spring Cage Assembly (includes 2 screws)	47260717
35♦	Spindle	See pg. 43
38	Spindle Spring	44484996
40*	Rose, Inside	03-042-RHO
42	Hub (10-piece bulk pack)	23599228

* Must specify finish.

♦ This item only available as part of door thickness kit, see page 43.

CO-200-MS Keypad Only, Exterior



No.	Description	Part no.	
5‡	Baseplate Assembly, MS	23599103	
10	Lock Case Assembly, Narrow, 1½" wide	46928818	
	Lock Case Assembly, 1¼" wide	46928826	
15*	Cylinder	See pg. 47	
16	Gasket Kit (includes baseplate, spindle and reader gaskets)	47260740	
18* ◇	Lever, KIL	03-231	
	Lever, FSIC	03-232	
	Lever, SFIC	03-200	
21**	Spring Cage Assembly (includes 2 screws)	47258543	
23	USB Cover (10-piece bulk pack)	46928719	
26*	Strike (includes 2 screws)	See pg. 54	
27*	Armor Front, MS (includes 2 screws)	1¼" Wide	09-663
		1½" Wide	09-669

No.	Description		Part no.
35♦	Spindle		See pg. 43
36♦	Stand-Offs, MS/MD		See pg. 43
37♦	Baseplate Stand-Offs		See pg. 43
39	Wiring Harness	Classroom/Storeroom	23518392
		Office/Privacy	23518384
44*	Escutcheon, Keypad Only, MS/MS (with screws)		47260709
45	Keypad Membrane		44487247

* Must specify finish.

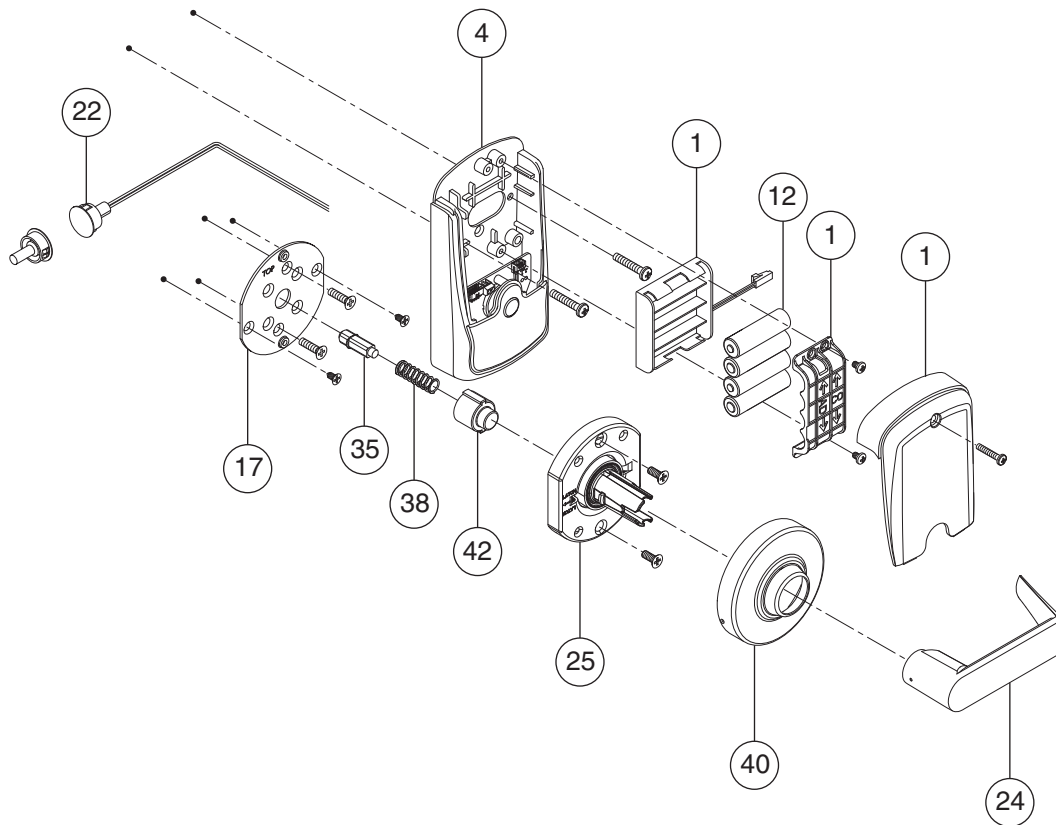
** For competitor outside spring cages, see page 46.

♦ This item only available as part of door thickness kit see page 43.

‡ Must specify cylinder type and handing.

◇ For competitor outside levers, see page 45.

CO-200-MS Keypad Only, Interior



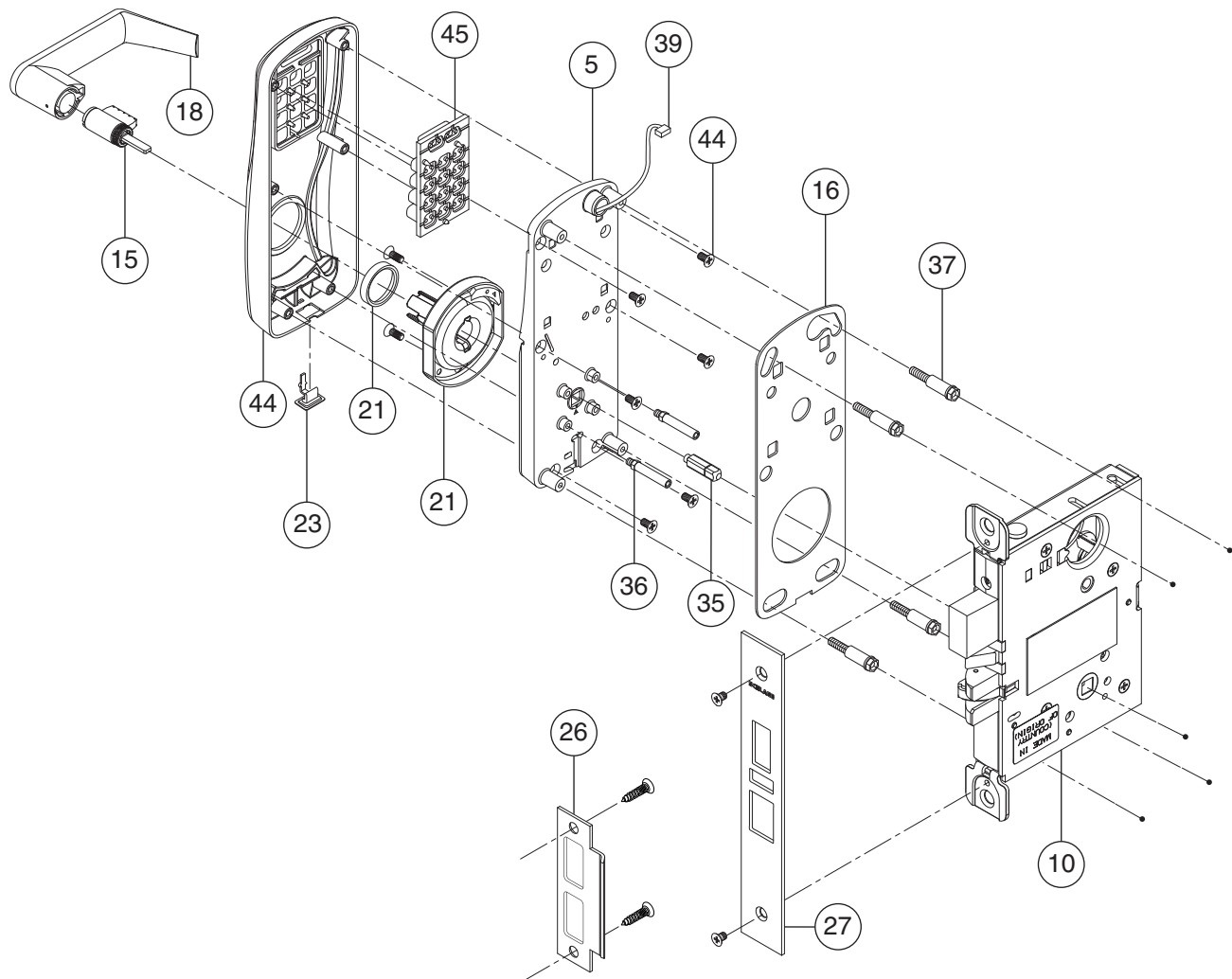
No.	Description	Part no.
1*	4AA Battery Holder and Cover Kit	
	4AA Battery Holder	4B-CM
	4AA Battery Strap	
	Screws, Battery Strap (2)	
	4AA Battery Cover	
	Screw, Battery Cover (1)	
4*	Escutcheon, without IPB (inside push button) (with screws)	23599327
	Escutcheon, with IPB (inside push button) (with screws)	23599335
12	Batteries, AA (alkaline only)	F206-488
17	Inside Mounting Plate Kit (includes 4 screws)	23599244
22	Door Position Switch	46929121
24*	Lever, Inside	03-230
25	Spring Cage Assembly (includes 2 screws)	47260717
35♦	Spindle	See pg. 43

No.	Description	Part no.
38	Spindle Spring	44484996
40*	Rose, Inside	03-042-RHO
42	Hub (10-piece bulk pack)	23599228

* Must specify finish.

♦ This item only available as part of door thickness kit, see page 43.

CO-200-MD Keypad Only, Exterior



No.	Description	Part no.
5‡	Baseplate Assembly, MS	23599103
10	Lock Case Assembly, Narrow, 1⅞" wide	46928834
	Lock Case Assembly, 1¾" wide	46928842
15*	Cylinder	See pg. 47
16	Gasket Kit (includes baseplate, spindle and reader gaskets)	47260740
18* ◇	Lever, KIL	03-231
	Lever, FSIC	03-232
	Lever, SFIC	03-200
21**	Spring Cage Assembly (includes 2 screws)	47258543
23	USB Cover (10-piece bulk pack)	46928719
26*	Strike (includes 2 screws)	See pg. 54
27*	Armor Front, MD (includes 2 screws)	1¼" Wide 09-666
		1⅞" Wide 09-672

No.	Description		Part no.
35♦	Spindle		See pg. 43
36♦	Stand-Offs, MS/MD		See pg. 43
37♦	Baseplate Stand-Offs		See pg. 43
39	Wiring Harness	Classroom/Storeroom	23518392
		Office/Privacy	23518384
44*	Escutcheon, Keypad Only, MD (with screws)		47260709
45	Keypad Membrane		44487247

* Must specify finish.

** For competitor outside spring cages, see page 46.

♦ This item only available as part of door thickness kit see page 43.

‡ Must specify cylinder type and handing.

◇ For competitor outside levers, see page 45.