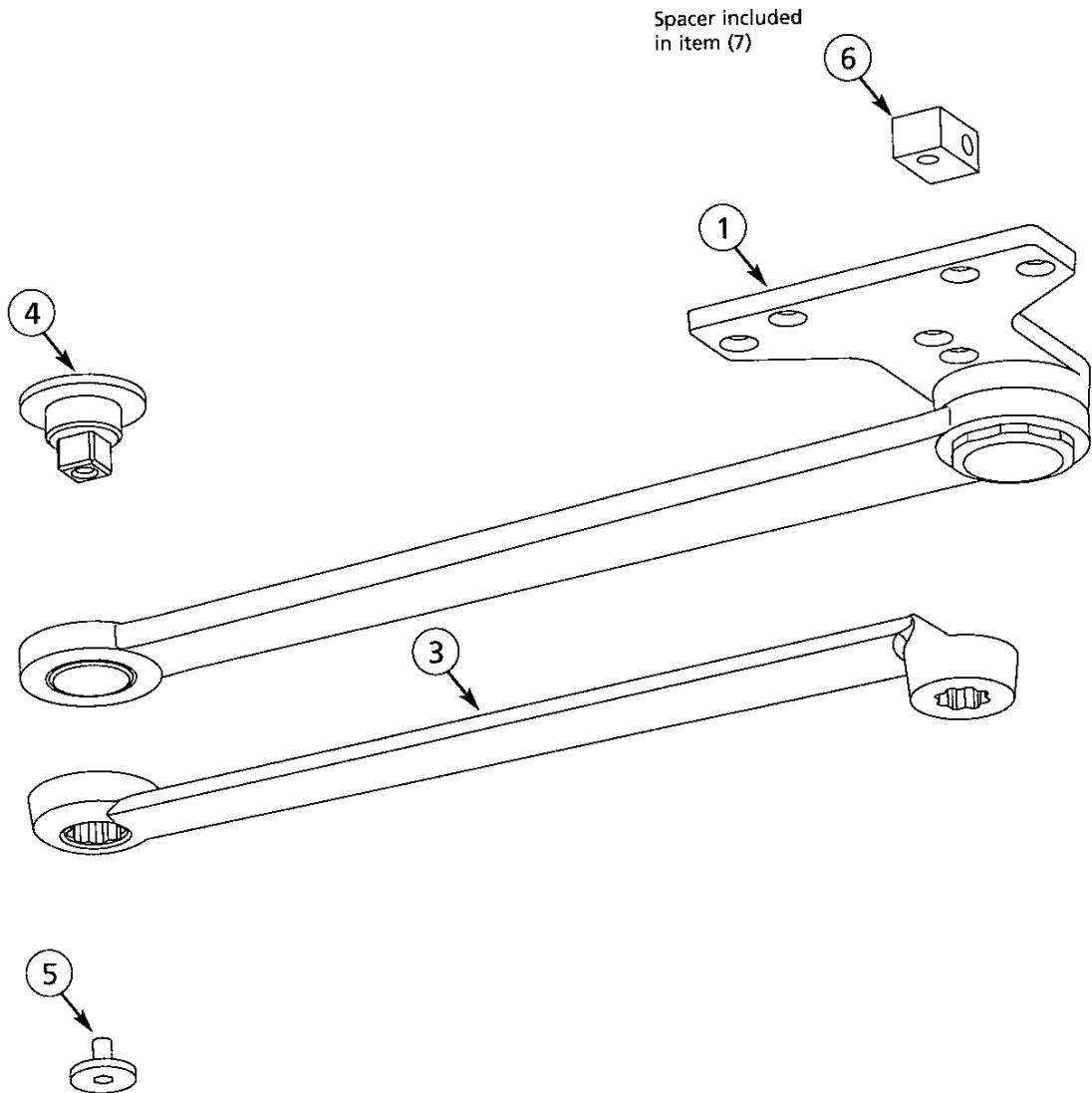


Item	Part No.	Description	Qty
1	*63-3727	P10 arm and bracket assembly	1
2	*25-SP10	SP10 security arm assembly (not shown) consists of items 1, 3, 4, 5 permanently assembled	1
3	*63-0641	Main arm	1
4	*63-0700	Pivot	1
5	*01-9145	Screw (pivot)	1
6	63-0191	Spacer	1
7	*63-2392	PI 0/SP10 arm mounting screw pack (not shown)	1
8	*01-2300	Wood screw #12 x 1-1/2" (not shown)	4
9	*01-2303	Wood screw #12 x 2-1/4" (not shown)	1

*Finish required: Powder coat finishes - EB, EN, ED, EP, EAB
Plated finishes- 3, 4, 9, 10, 108, 26, 26D



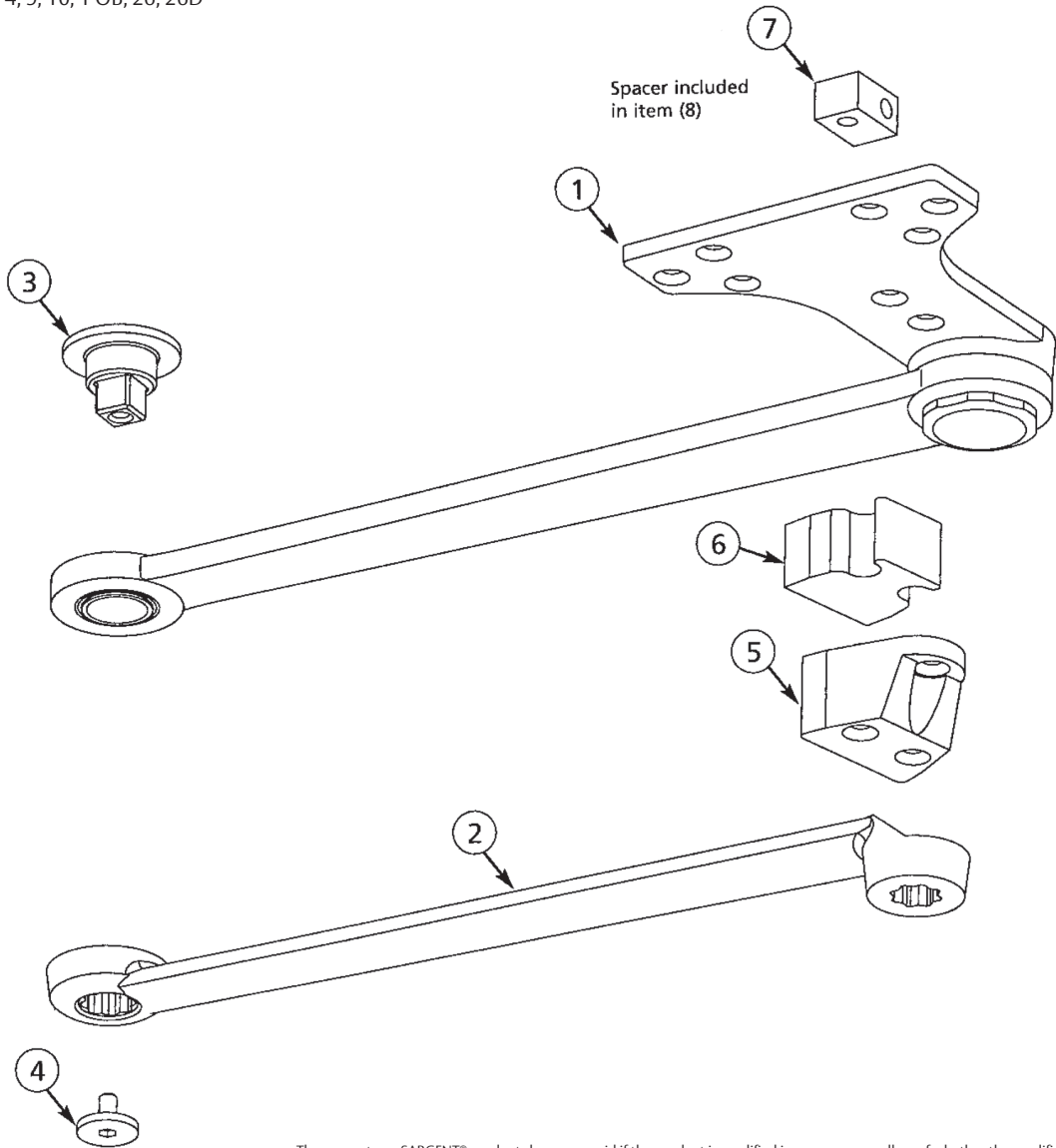
The warranty on SARGENT® products becomes void if the product is modified in any way, regardless of whether the modification causes or contributes to any alleged defect. If a SARGENT product is modified it may no longer meet industry certification and quality control standards applicable to the original product and is no longer a genuine SARGENT product.

Copyright ©2019 Sargent Manufacturing Company, an ASSA ABLOY Group company. All rights reserved. Reproduction in whole or in part without the express written permission of Sargent Manufacturing Company is prohibited.

25-CPS Heavy Duty Parallel Arm with Compression Stop

Item	Part No.	Description	Qty	Comments
1	*63-3830	CPS arm and bracket assembly	1	Included in item (8)
2	*63-0641	Main arm	1	
3	*63-0700	Pivot	1	
4	*01-9145	Screw (pivot)	1	
s	*63-0516	Bumper holder	1	
6	63-3493	Bumper	1	
7	63-0191	Spacer	1	
8	*63-2398	CPS arm mounting screwpack (not shown)	1	
9	*01-2300	Wood screw #12 x 1-1 /2" (not shown)	4	
10	*01-2303	Wood screw #12 x 2-1/4" (not shown)	3	

* Finish required: Powder coat finishes - EB, EN, ED, EP, EAB
 Plated finishes - 3, 4, 9, 10, 1 OB, 26, 26D

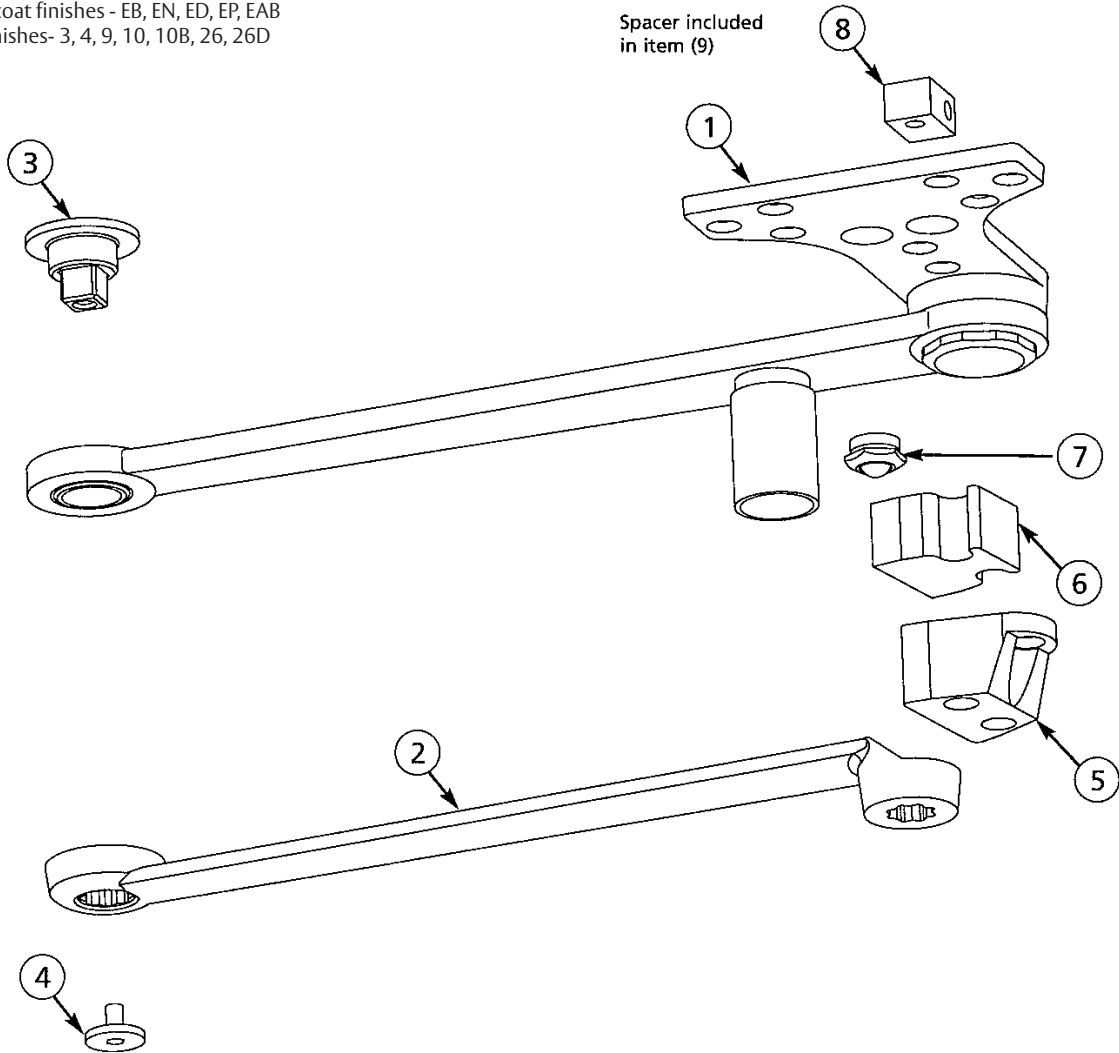


The warranty on SARGENT® products becomes void if the product is modified in any way, regardless of whether the modification causes or contributes to any alleged defect. If a SARGENT product is modified it may no longer meet industry certification and quality control standards applicable to the original product and is no longer a genuine SARGENT product.
 Copyright ©2018 Sargent Manufacturing Company, an ASSA ABLOY Group company. All rights reserved. Reproduction in whole or in part without the express written permission of Sargent Manufacturing Company is prohibited.

25-CPSH Heavy Duty Parallel Arm with Hold Open and Compression Stop

Item	Part No.	Description	Qty	Comments
1	*63-3836	CPSH arm assembly	1	
2	*63-0641	Main arm	1	
3	*63-0700	Pivot	1	
4	*01-9145	Screw (pivot)	1	
5	*63-0516	Bumper holder	1	Included in item (9)
6	63-3493	Bumper	1	
7	63-3788	Insert	1	
8	63-0191	Spacer	1	
9	*63-3487	CPSH arm mounting screw pack (not shown)	1	
10	*01-2300	Wood screw #12 x 1-1/2" (not shown)	4	
11	*01-2303	Wood screw #12 x 2-1/4" (not shown)	3	

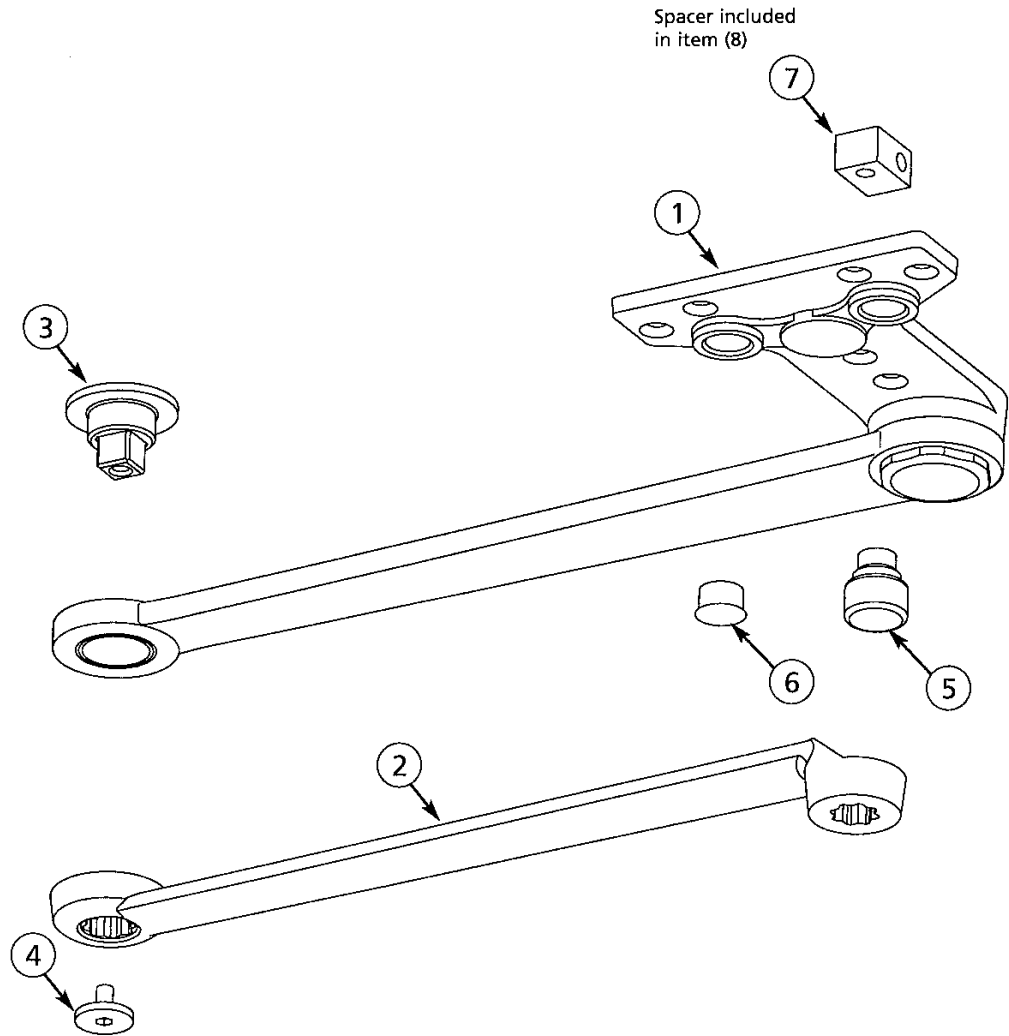
*Finish required:
Powder coat finishes - EB, EN, ED, EP, EAB
Plated finishes- 3, 4, 9, 10, 10B, 26, 26D



The warranty on SARGENT® products becomes void if the product is modified in any way, regardless of whether the modification causes or contributes to any alleged defect. If a SARGENT product is modified it may no longer meet industry certification and quality control standards applicable to the original product and is no longer a genuine SARGENT product.
Copyright ©2019 Sargent Manufacturing Company, an ASSA ABLOY Group company. All rights reserved. Reproduction in whole or in part without the express written permission of Sargent Manufacturing Company is prohibited.

Item	Part No.	Description	Qty
1	*63-3837	PS arm and bracket assembly	1
2	*63-0641	Main arm	1
3	*63-0700	Pivot	1
4	*01-9145	Screw (pivot)	1
5	*63-0211	Stop	1
6	01-0864	Hole plug	1
7	63-0191	Spacer	1
8	*63-2392	PS arm mounting screw pack (not shown)	1
9	*01-2300	Wood screw #12 x 1-1/2" (not shown)	4
10	*01-2303	Wood screw #12 x 2-1/4" (not shown)	1

* Finish required:
Powder coat finishes - EB, EN, ED, EP, EAB
Plated finishes - 3, 4, 9, 10, 10B, 26, 26D



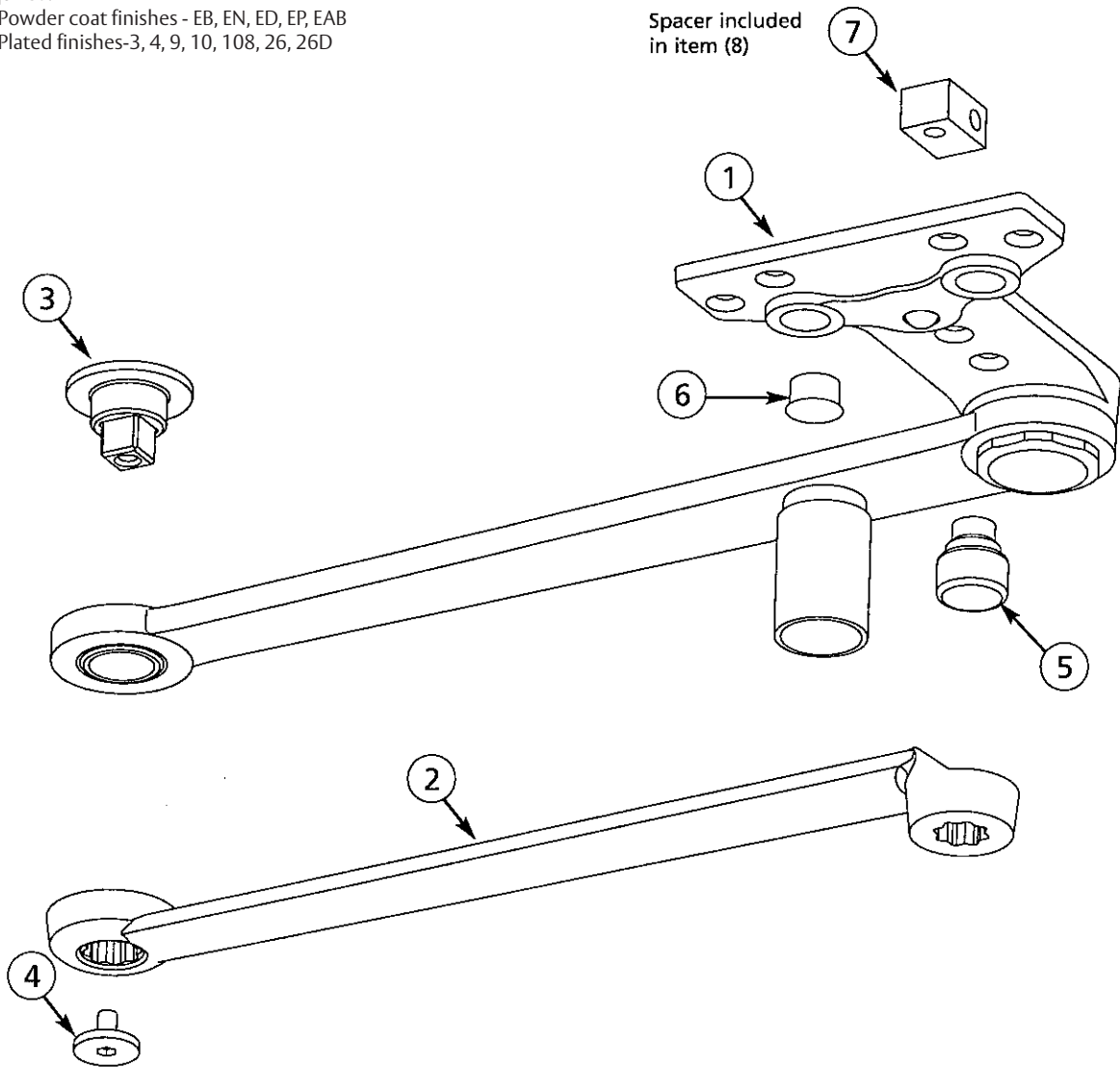
The warranty on SARGENT® products becomes void if the product is modified in any way, regardless of whether the modification causes or contributes to any alleged defect. If a SARGENT product is modified it may no longer meet industry certification and quality control standards applicable to the original product and is no longer a genuine SARGENT product.

Copyright ©2018 Sargent Manufacturing Company, an ASSA ABLOY Group company. All rights reserved. Reproduction in whole or in part without the express written permission of Sargent Manufacturing Company is prohibited.

25-PSH Heavy Duty Parallel Arm with Hold Open and Stop

Item	Part No.	Description	Qty.
1	*63-3833	PSH arm and bracket assembly	1
2	*63-0641	Main arm	1
3	*63-0700	Pivot	1
4	*01-9145	Screw (pivot)	1
5	*63-0211	Stop	1
6	01-0864	Hole plug	1
7	63-0191	Spacer	1
8	*63-2392	PSH arm mounting screw pack (not shown)	1
9	*01-2300	Wood screw #12 x 1-1/2" (not shown)	4
10	*01-2303	Wood screw #12 x 2-1/4" (not shown)	1

* Finish required:
Powder coat finishes - EB, EN, ED, EP, EAB
Plated finishes-3, 4, 9, 10, 108, 26, 26D



The warranty on SARGENT® products becomes void if the product is modified in any way, regardless of whether the modification causes or contributes to any alleged defect. If a SARGENT product is modified it may no longer meet industry certification and quality control standards applicable to the original product and is no longer a genuine SARGENT product.
Copyright ©2019 Sargent Manufacturing Company, an ASSA ABLOY Group company. All rights reserved. Reproduction in whole or in part without the express written permission of Sargent Manufacturing Company is prohibited.