

4870 Series Deadbolts

Auxiliary Locks

SARGENT®

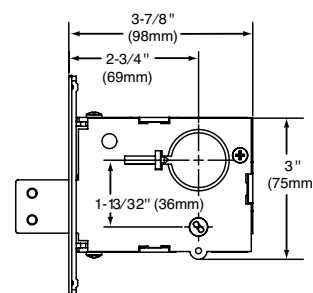
ASSA ABLOY

Specifications

For Doors	Door thickness 1-3/4" (44mm) standard (For thicker doors, consult factory)
Backset	2-3/4" (70mm) only
Strike	# 480 Strike Standard: 3-1/2" (89mm) x 1-1/8" (29mm); For Strike Box, specify WBS when ordering
Bolt	Laminated Stacked Steel Deadbolt with Hardened Pin and a 1" throw
Cylinder	Brass 6 pin. Two nickel silver keys per lock (Control key must be ordered separately, when required)
Cylinder Ring	97 Rosette (standard with #41 Cylinder), 1KB rosette optional (specify on order) NOTE: See 8200 Mortise Lock catalog (page 25) for details on cylinder collar kit.
Case	Heavy wrought steel, .093 thick, protected with a zinc dichromate finish
Outside Front Plate	Brass, bronze, stainless steel. 4-5/8" (117mm) x 1-1/8" (29mm) Adjustable for flat or beveled doors (bevel adjustment 1/8" (3mm) in 2" (51mm))
Hand	Non handed, field reversible (except for 74-)
Thumb Turn	130W ADA Thumb turn (standard); optional larger thumb turn (specify LB-)
UL/cUL Listed	Listed for use on fire doors
Mechanical Options	Cylinder Options see pages 9-10 28- 7710 Flat Lip Strike 4-7/8" (124mm) x 1-1/4" (32mm) ANSI A115-1 36- Torx® security screws 37- Spanner head security screws 74- Lock case wrapped in lead (specify hand) LB- Larger size ADA thumbturn SG- MicroShield® antimicrobial clear powder coat (only available with 32D) WBS- Wrought Box Strike
Finishes	03, 04, 09, 10, 10B, 10BE, 10BL, 20D, 32, 32D For other finishes consult factory



4870 Series Deadlock

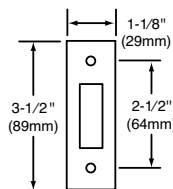


Any retrofit or other field modification to a fire rated opening can potentially impact the fire rating of the opening, and Sargent Manufacturing Company makes no representations or warranties concerning what such impact may be in any specific situation. When retrofitting any portion of an existing fire rated opening, or specifying and installing a new fire-rated opening, please consult with a code specialist or local code official (Authority Having Jurisdiction) to ensure compliance with all applicable codes and ratings.

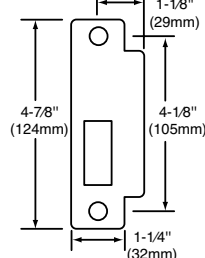
How To Order

10-28-	4874	26D
Options	Series x Function	Finish
Mechanical Options this page	4874	03, 04, 09, 10, 10B, 10BE, 10BL, 26, 26D, 32 & 32D
	4875	
Cylinder Options page 9-10	4876	
	4877	
	4878	
	4879	

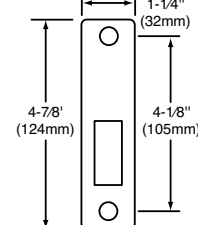
**480 Strike
ANSI A115.5
(Standard)**



7710 Strike (28-Option)

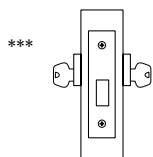


**7730 Strike
(Ordered separately)**



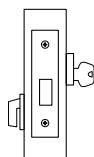
Functions

4874 Double Cylinder



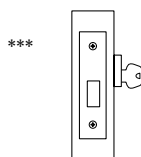
- Key from either side operates deadbolt
- **ANSI E06061**

4875 Single Cylinder x Turn Lever



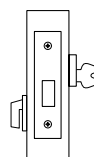
- Key outside operates deadbolt
- Thumb turn inside operates deadbolt
- **ANSI E06071**

4876 Single Cylinder



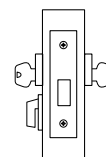
- Key outside operates deadbolt
- No inside operation
- **ANSI E06081**

4877 Classroom x Turn Lever



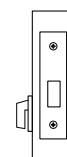
- Key outside operates deadbolt
- Thumb turn inside retracts deadbolt, but will not project it
- **ANSI E06091**

4878 Public Toilet



- Key from either side operates deadbolt
- Thumb turn inside retracts deadbolt, but will not project it

4879 Exit Lock



- Thumb turn inside operates deadbolt
- No outside operation

*** For use only on rooms with more than one exit