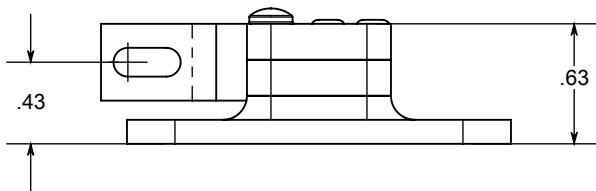
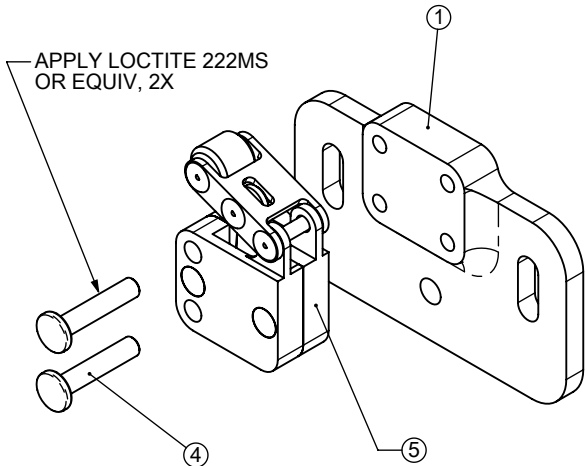
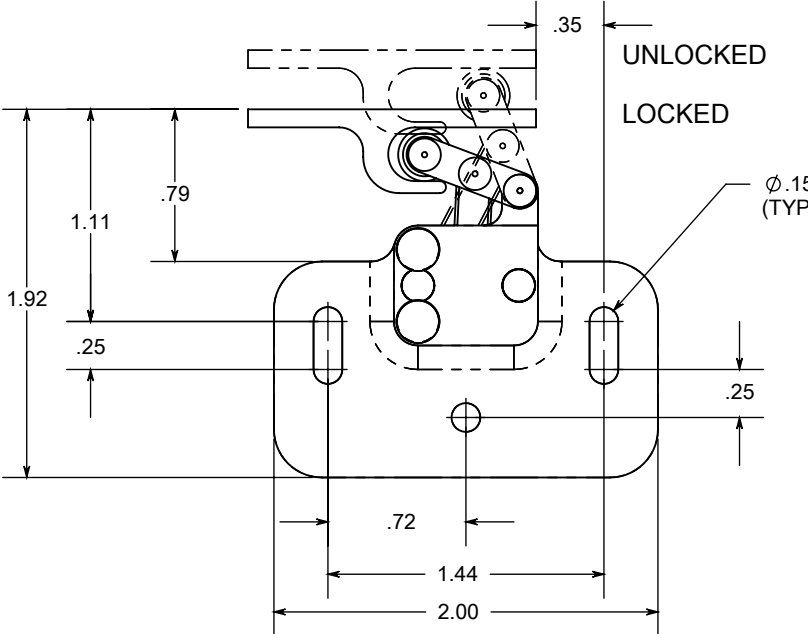
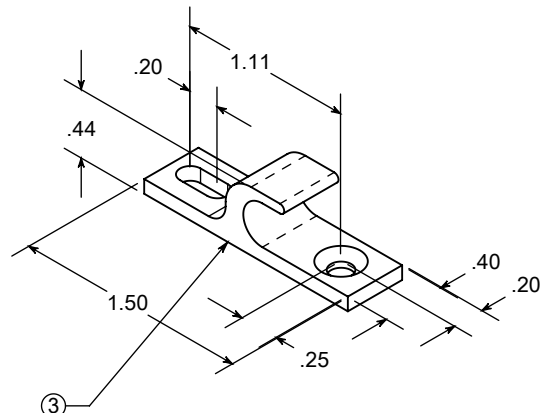


REVISIONS		DATE
IR	INITIAL RELEASE	1/19/2000
A	INCREASED ROLLER DIAMETER, FROM Ø.25 TO Ø.27; PN:1006 REPLACED PN:13SP039B IN BOM	3/5/2000
B	REDRAWN IN NEW SOFTWARE; NO BOM CHANGE	5/22/2000
C	REDRAWN WITH SOFTWARE UPGRADE, NEW ASSEMBLY RELATIONS; NO BOM CHANGE	5/27/2000
D	PN: 1007 REV. E; MS20426AD3-8 REPLACED CCR264SS3-4, WITHIN PN: TL1000	2/05/2001
E	REDUCED QTY MS20426AD3-8 FROM 3 TO 2	12/16/2004
F	TL1000 REPLACED WITH TL1000-T, DOES NOT AFFECT ANY PRIOR INSTALLATIONS	7/10/2006
G	STANDARDIZATION OF MOUNT PLATE, PN: 1011 & TITLE BLOCK UPDATE	7/15/2013



NOTES:

1. INSTALL CATCH USING ONE (1) NAS601 AND ONE NAS514-632 SCREWS.
2. INSTALL LATCH USING THREE (3) NAS601 SCREWS.
3. REQUIRED TRAVEL TO UNLOCK: 0.15"
4. LATCH CAN BE USED LEFT OR RIGHT HAND ON MOUNT PLATE.
5. RECOMMENDED USE WITH EXTERNAL PUSHER.
6. ASSEMBLY INCLUDES MOUNT PLATE AND CATCH.

ITEM NO.	QTY.	PART NO.	DESCRIPTION
1	1	1011	MOUNT PLATE
3	1	1012	CATCH
4	2	NAS600-9P	SCREW, PH
5	1	TL1000-T	TOUCH LATCH

PROPRIETARY AND CONFIDENTIAL THE INFORMATION CONTAINED IN THIS DRAWING IS THE SOLE PROPERTY OF SAINT LOUIS DESIGNS. ANY REPRODUCTION IN PART OR AS A WHOLE WITHOUT THE WRITTEN PERMISSION OF SAINT LOUIS DESIGNS IS PROHIBITED.		UNLESS SPECIFIED OTHERWISE DIMENSIONS ARE IN INCHES TOLERANCES: ANGULAR: ±1° TWO PLACE DECIMAL ±0.01 THREE PLACE DECIMAL ±0.005 SURFACE FINISH: 32 RMA MATERIAL 7075-T651 QQ-A-225/8 FINISH BLACK ANODIZE MIL-A-8625, TYPE 2 CLASS 2 DO NOT SCALE DRAWING	DRAWN	NAME	DATE	Saint Louis Designs, Inc. PO BOX 3400, Austin, TX78764 512-472-4711, www.saintlouisdesigns.com TL1000RMP SIZE A DWG. NO. TL1000RMP REV. G SCALE:1:1 WEIGHT: SHEET 1 OF 1
			CHECKED	MSTL	7/15/2013	
			ENG APPR.			
			MFG APPR.	MSTL	7/15/2013	
			Q.A.			
	DEBUR AND BREAK SHARP EDGES		COMMENTS:			