

The fresh design of our Cylinder Pull is available in straight and offset versions. The 1½" tubing blends seamlessly into the terminating flat end posts. NeoCylinder Pulls are available with our popular GripZone finish.

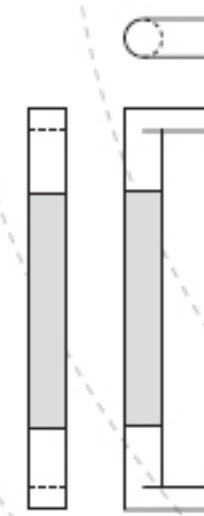
NeoCylinder™ with or without GripZone™



Straight Pull

Pull No.	Diameter	CTC
RM7210	1½"	11", 16", 20"

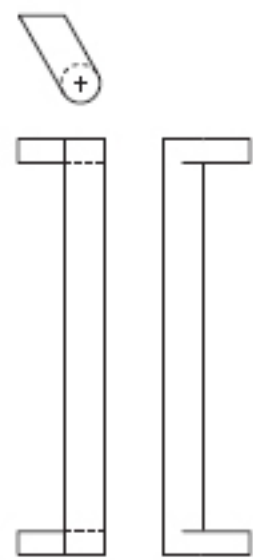
Up to 36" CTC available.



Straight Pull

Pull No.	Diameter	CTC
RM7230	1½"	11", 16", 20"

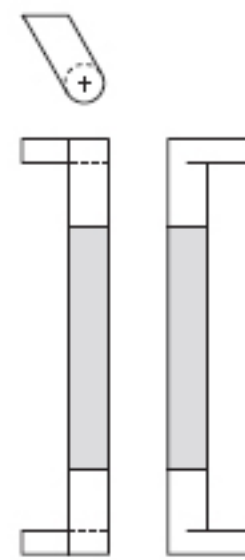
Up to 36" CTC available.



Offset Pull

Pull No.	Diameter	CTC
RM7220	1½"	11", 16", 20"

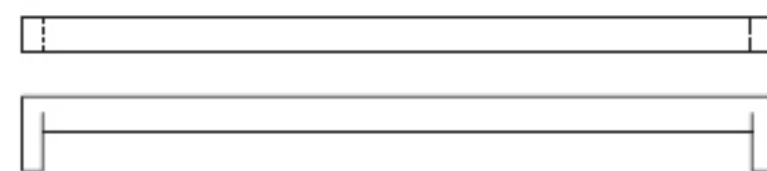
Up to 36" CTC available.



Offset Pull

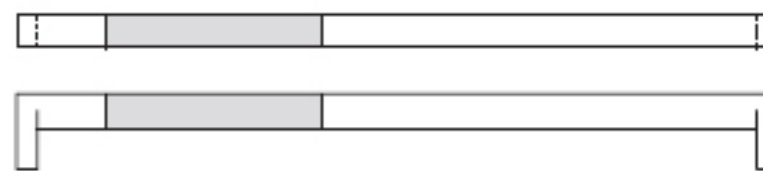
Pull No.	Diameter	CTC
RM7240	1½"	11", 16", 20"

Up to 36" CTC available.



Push Bar

Pull No.	Diameter	CTC
RM7212	1½"	Specify



Push Bar

Pull No.	Diameter	CTC
RM7232	1½"	Specify

Base Metal: Stainless steel