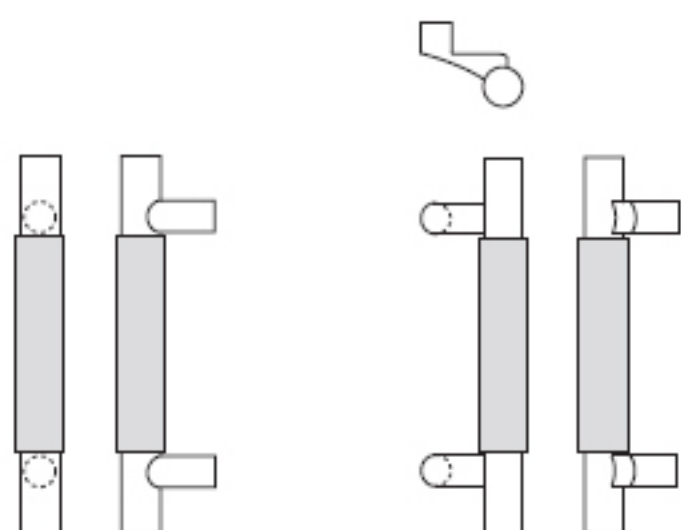


Upholstery leather pulls are available in two standard colors or from a universe of custom leather. We use 3 to 4 ounce chrome tanned leather, tightly wrapped and neatly sewn along the back. Detail end stitching compliments this glove soft leather which is suitable for interior applications. See page 86 for leather color selection and more information.

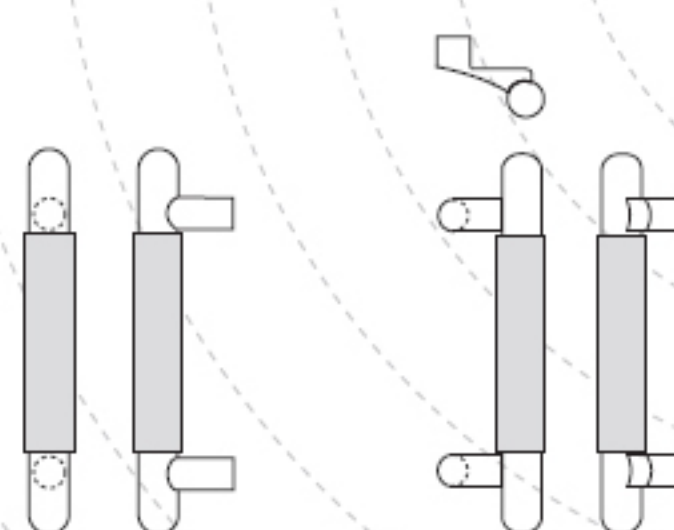
## Upholstery Leather

*straight & offset pulls*



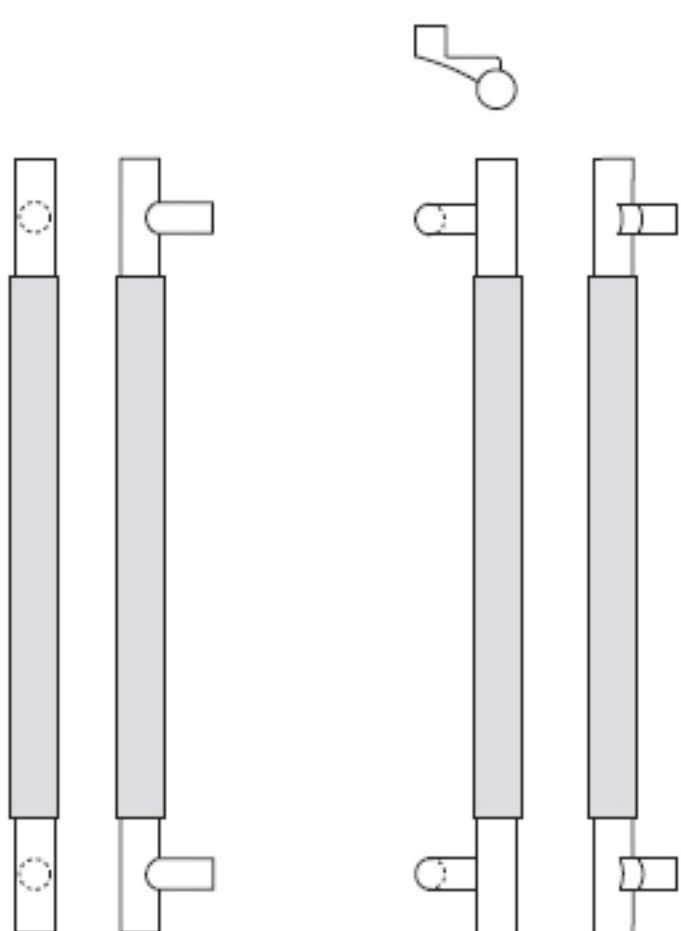
### Pulls - Square Ends

Pull No.	Post	Diameter*	CTC
RM6100	Straight	1"	10", 12"
RM6110	Straight	1¼"	12", 16"
RM6120	Straight	1½"	12", 16"
RM6130	Offset	1"	10", 12"
RM6140	Offset	1¼"	12", 16"
RM6150	Offset	1½"	12", 16"



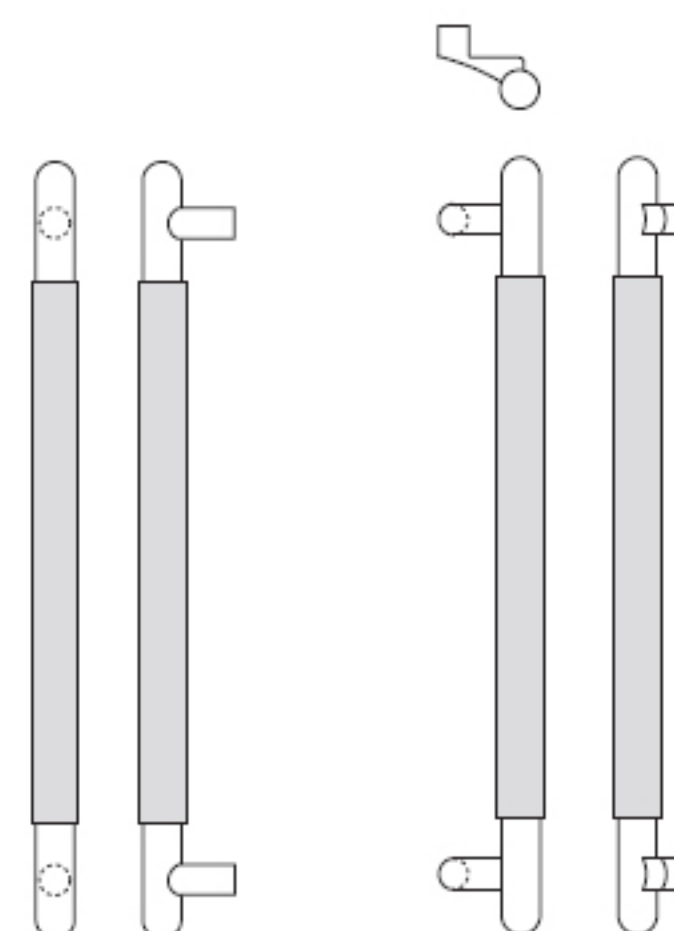
### Pulls - Round Ends

Pull No.	Post	Diameter*	CTC
RM6104	Straight	1"	10", 12"
RM6114	Straight	1¼"	12", 16"
RM6124	Straight	1½"	12", 16"
RM6134	Offset	1"	10", 12"
RM6144	Offset	1¼"	12", 16"
RM6154	Offset	1½"	12", 16"



### Long Pulls - Square Ends

Pull No.	Post	Diameter*	Overall
RM6160	Straight	1"	36" to 96"
RM6161	Straight	1¼"	36" to 96"
RM6162	Straight	1½"	36" to 96"
RM6170	Offset	1"	36" to 96"
RM6171	Offset	1¼"	36" to 96"
RM6172	Offset	1½"	36" to 96"



### Long Pulls - Round Ends

Pull No.	Post	Diameter*	Overall
RM6180	Straight	1"	36" to 96"
RM6181	Straight	1¼"	36" to 96"
RM6182	Straight	1½"	36" to 96"
RM6190	Offset	1"	36" to 96"
RM6191	Offset	1¼"	36" to 96"
RM6192	Offset	1½"	36" to 96"

**Base Metal:** Brass, bronze, stainless steel

**Options:** • For optional mid-post, suffix the product number with "MP" (example: RM6161MP).

• Over 96" available on select finishes.

**Note:** Maximum leather length is 72".

\* Diameter of metal grip, leather thickness is about ⅛" additional.