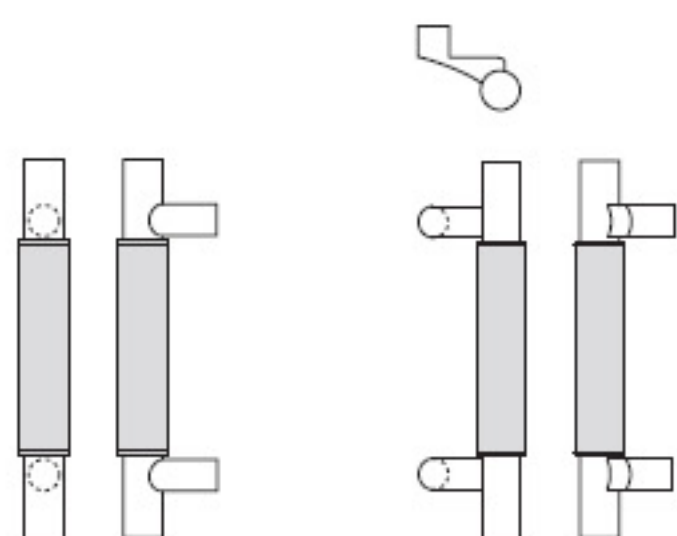


English Bridle leather pulls are beautifully crafted in a variety of colors and styles. Detail end stitching compliments the tight fitting leather cover. The sewn seam on the back of the pull is a work of art itself. Typically used for saddles and other equestrian products, this smooth durable leather is suitable for both interior and exterior applications. A full wrap version is available on square end pulls. See page 86 for leather color selection and more information.

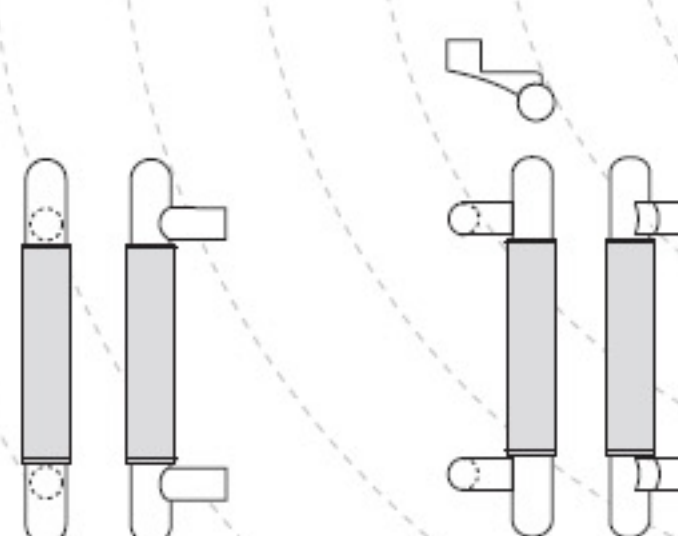
English Bridle Leather

straight & offset pulls



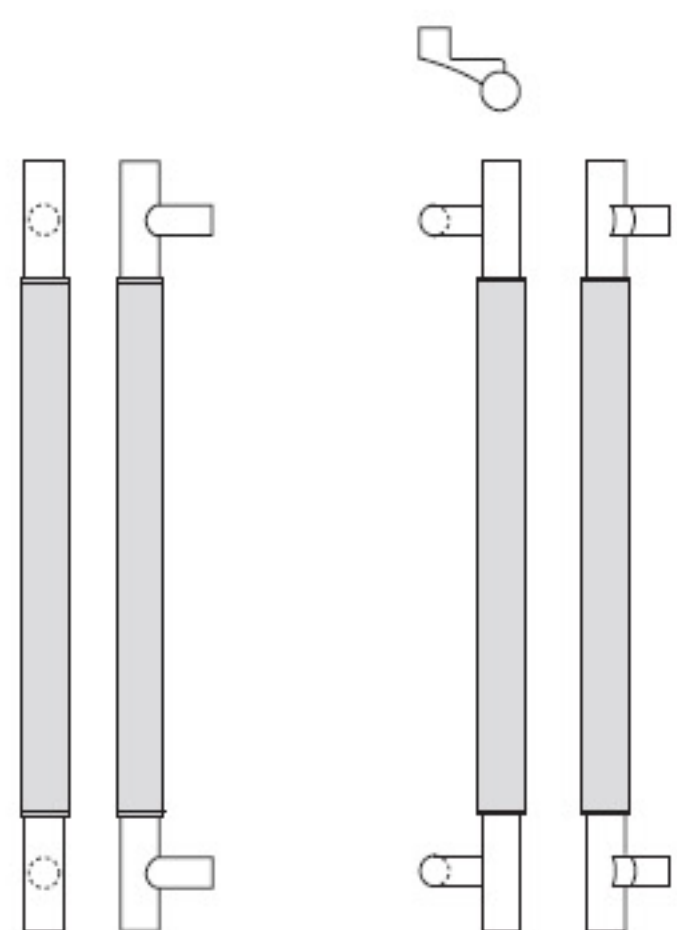
Pulls - Square Ends

Pull No.	Post	Diameter*	CTC
RM6000	Straight	1"	10", 12"
RM6010	Straight	1¼"	12", 16"
RM6020	Straight	1½"	12", 16"
RM6030	Offset	1"	10", 12"
RM6040	Offset	1¼"	12", 16"
RM6050	Offset	1½"	12", 16"



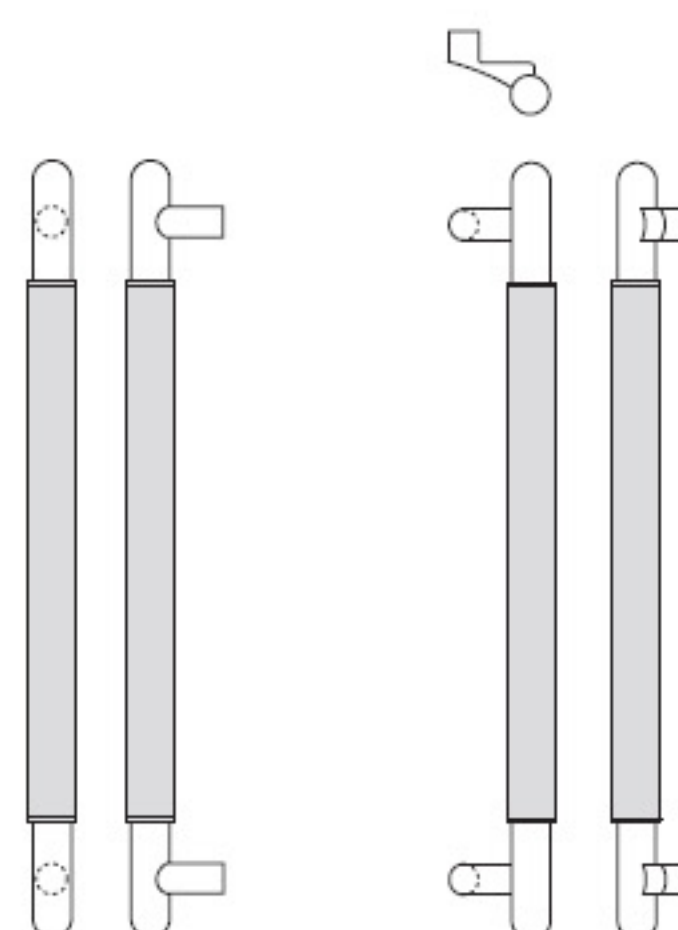
Pulls - Round Ends

Pull No.	Post	Diameter*	CTC
RM6004	Straight	1"	10", 12"
RM6014	Straight	1¼"	12", 16"
RM6024	Straight	1½"	12", 16"
RM6034	Offset	1"	10", 12"
RM6044	Offset	1¼"	12", 16"
RM6054	Offset	1½"	12", 16"



Long Pulls - Square Ends

Pull No.	Post	Diameter*	Overall
RM6060	Straight	1"	36" to 96"
RM6061	Straight	1¼"	36" to 96"
RM6062	Straight	1½"	36" to 96"
RM6070	Offset	1"	36" to 96"
RM6071	Offset	1¼"	36" to 96"
RM6072	Offset	1½"	36" to 96"



Long Pulls - Round Ends

Pull No.	Post	Diameter*	Overall
RM6080	Straight	1"	36" to 96"
RM6081	Straight	1¼"	36" to 96"
RM6082	Straight	1½"	36" to 96"
RM6090	Offset	1"	36" to 96"
RM6091	Offset	1¼"	36" to 96"
RM6092	Offset	1½"	36" to 96"



Optional FW

Base Metal: Brass, bronze, stainless steel

Options:

- For optional mid-post, suffix the product number with "MP" (example: RM6061MP).
- Full wrap option is available up to 72" long (example: RM6061FW).
- Over 96" available on select finishes.

Note: Maximum leather length is 72".

* Diameter of metal grip, leather thickness is about ⅛" additional.