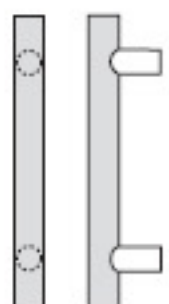


ArborTek pulls and push bars are made from select dyed hardwood veneers that are impregnated with resin and laminated to produce a rugged wood element. Just as in nature, each has its unique markings and tone. Solid brass and stainless steel mounting posts provide attachment strength and a simple contrast. Available in three diameters. A variety of natural wood species is available on special order; please contact the factory with your requirement.

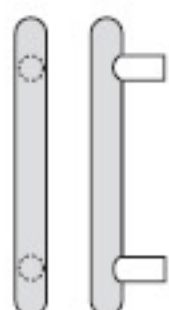
ArborTek™
wood grip pulls



Straight Pulls - Square Pulls

Pull No.	Diameter	CTC
RM4100	1"	8", 10", 12"
RM4110	1¼"	8", 11", 16"
RM4120	1½"	11", 16", 20"

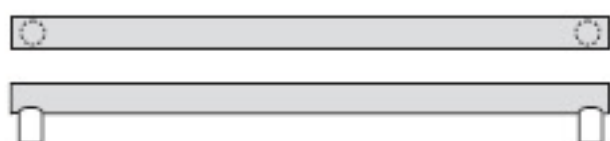
Up to 48" overall available.



Straight Pulls - Round Ends

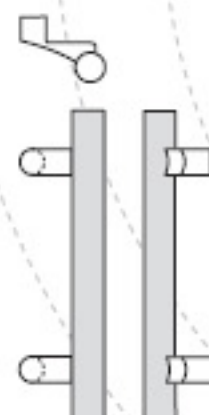
Pull No.	Diameter	CTC
RM4104	1"	8", 10", 12"
RM4114	1¼"	8", 11", 16"
RM4124	1½"	11", 16", 20"

Up to 48" overall available.



Push Bars - Square Ends*

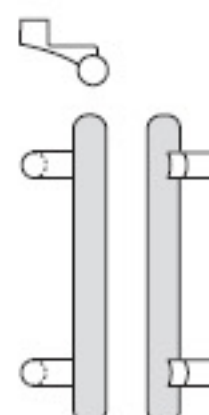
Pull No.	Diameter	CTC
RM4112	1¼"	Specify
RM4122	1½"	Specify



Offset Pulls - Square Pulls

Pull No.	Diameter	CTC
RM4130	1"	8", 10", 12"
RM4140	1¼"	8", 11", 16"
RM4150	1½"	11", 16", 20"

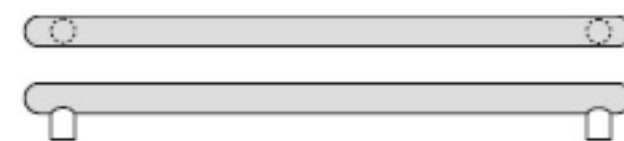
Up to 48" overall available.



Offset Pulls - Round Ends

Pull No.	Diameter	CTC
RM4134	1"	8", 10", 12"
RM4144	1¼"	8", 11", 16"
RM4154	1½"	11", 16", 20"

Up to 48" overall available.



Push Bars - Round Ends*

Pull No.	Diameter	CTC
RM4116	1¼"	Specify
RM4126	1½"	Specify

Base Metals: Brass, bronze, stainless steel

Note: See price list for information on ordering push pull sets.

*To specify multi-bar sets suffix -2 or -3 to pull number (example: RM4122-2).