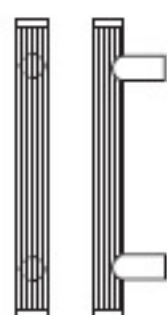


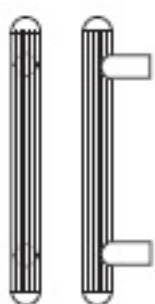
LineaTek pulls feature grooved tubular material that differentiates these pulls from all others on the market. The material is similar to fluted tubing but with a streamlined defined surface. These post mount pulls and push bars make a smart contemporary statement.

**LineaTek™**  
fully grooved pulls



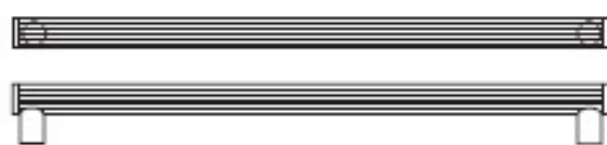
**Straight Pulls - Square Ends**

Pull No.	Diameter	CTC
RM3610	1¼"	8", 11", 16"
RM3620	1½"	11", 16", 20"



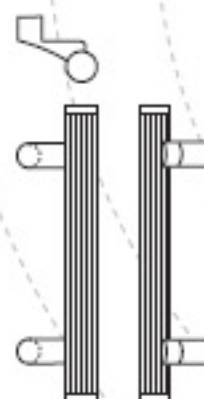
**Straight Pulls - Round Ends**

Pull No.	Diameter	CTC
RM3614	1¼"	8", 11", 16"
RM3624	1½"	11", 16", 20"



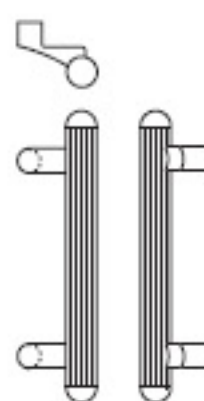
**Push Bars - Square Ends\***

Pull No.	Diameter	CTC
RM3612	1¼"	Specify
RM3622	1½"	Specify



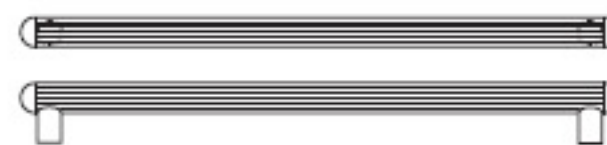
**Offset Pulls - Square Ends**

Pull No.	Diameter	CTC
RM3640	1¼"	8", 11", 16"
RM3650	1½"	11", 16", 20"



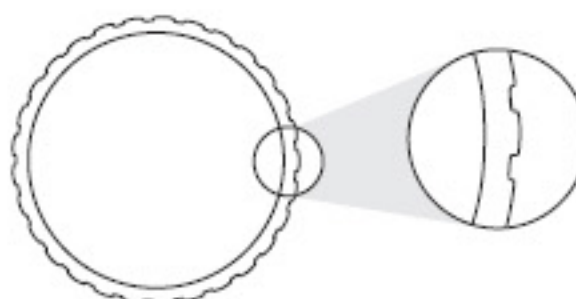
**Offset Pulls- Round Ends**

Pull No.	Diameter	CTC
RM3644	1¼"	8", 11", 16"
RM3654	1½"	11", 16", 20"



**Push Bars- Round Ends\***

Pull No.	Diameter	CTC
RM3616	1¼"	Specify
RM3626	1½"	Specify



**Tube Detail**

**Base Metals:** Brass, bronze, stainless steel

**Note:** See price list for information on ordering push pull sets.

\*To specify multi-bar sets suffix -2 or -3 to pull number (example: RM3612-2).