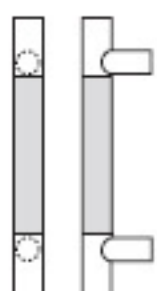


The BronzeAge pulls are composed of a 90% copper alloy uncoated grip section with stainless steel ends and mounting posts. This combination provides the beautiful effects of copper with the low maintenance of stainless steel. Repeated contact with the grip section will prevent extreme tarnishing and allow a soft patina to develop while the ends and mounting posts stay bright and shiny with little maintenance. Clear coating is available if natural patina is not desired.

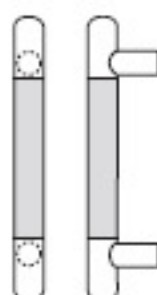
BronzeAge™
with copper rich grip



Straight Pulls - Square Ends

Pull No.	Diameter	CTC
RM2810	1¼"	8", 11", 16"
RM2820	1½"	11", 16", 20"

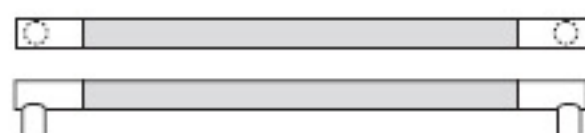
Up to 36" CTC available.



Straight Pulls - Round Ends

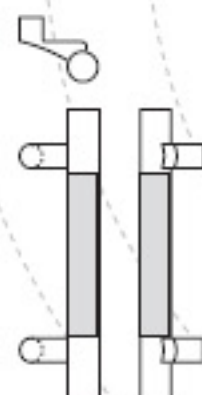
Pull No.	Diameter	CTC
RM2814	1¼"	8", 11", 16"
RM2824	1½"	11", 16", 20"

Up to 36" CTC available.



Push Bars - Square Ends*

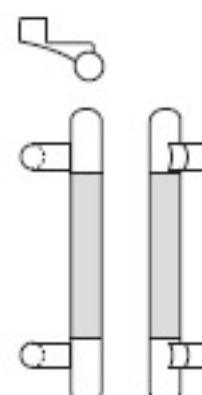
Pull No.	Diameter	CTC
RM2812	1¼"	Specify
RM2822	1½"	Specify



Offset Pulls - Square Ends

Pull No.	Diameter	CTC
RM2840	1¼"	8", 11", 16"
RM2850	1½"	11", 16", 20"

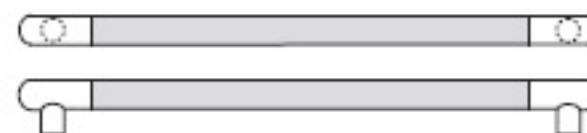
Up to 36" CTC available.



Offset Pulls - Round Ends

Pull No.	Diameter	CTC
RM2844	1¼"	8", 11", 16"
RM2854	1½"	11", 16", 20"

Up to 36" CTC available.



Push Bars - Round Ends*

Pull No.	Diameter	CTC
RM2816	1¼"	Specify
RM2826	1½"	Specify

Base Metals: Stainless steel, bronze (brass available).

Options: For optional clear coated grip, suffix the product number with "L" (example: RM2812L).

*To specify multi-bar sets suffix -2 or -3 to pull number (example: RM2812-3).

© 2006 Rockwood Manufacturing Company