

The SoftTek pulls feature a durable weather resistant black 1¼" diameter Santoprene™ grip that provides a soft, warm feeling gripping surface. They are suitable for both interior and exterior applications. These grips are comfortable to touch even in cold temperature extremes. Available in straight and offset pulls and push bars in all architectural finishes.

**SoftTek™**  
with Santoprene™ grip



**Straight Pull**

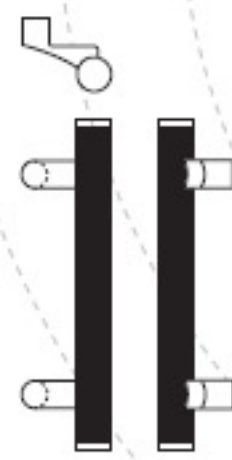
| Pull No. | Diameter | CTC          |
|----------|----------|--------------|
| RM2610   | 1¼"      | 8", 11", 16" |

Up to 36" CTC available.



**Push Bar\***

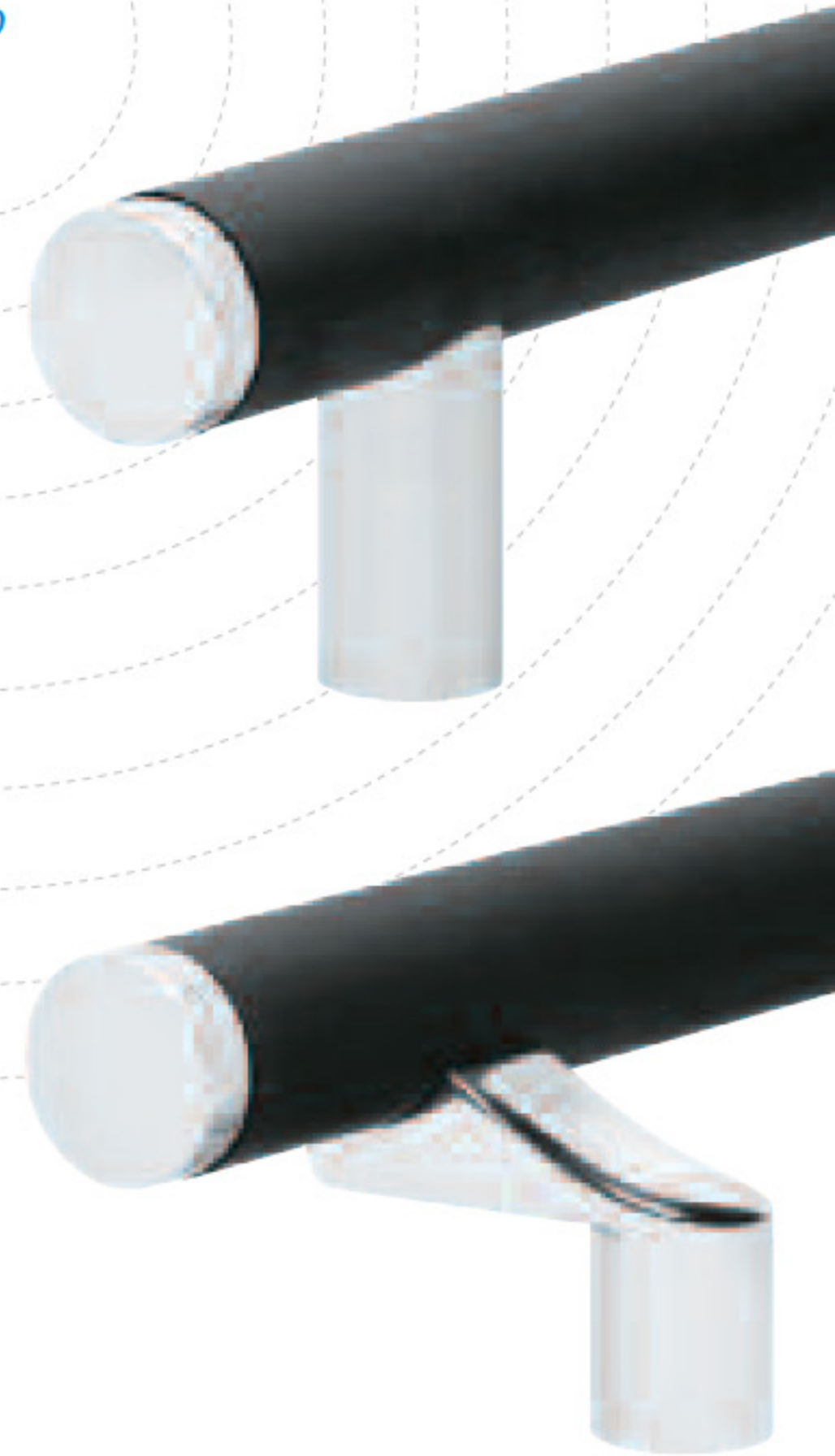
| Pull No. | Diameter | CTC     |
|----------|----------|---------|
| RM2612   | 1¼"      | Specify |



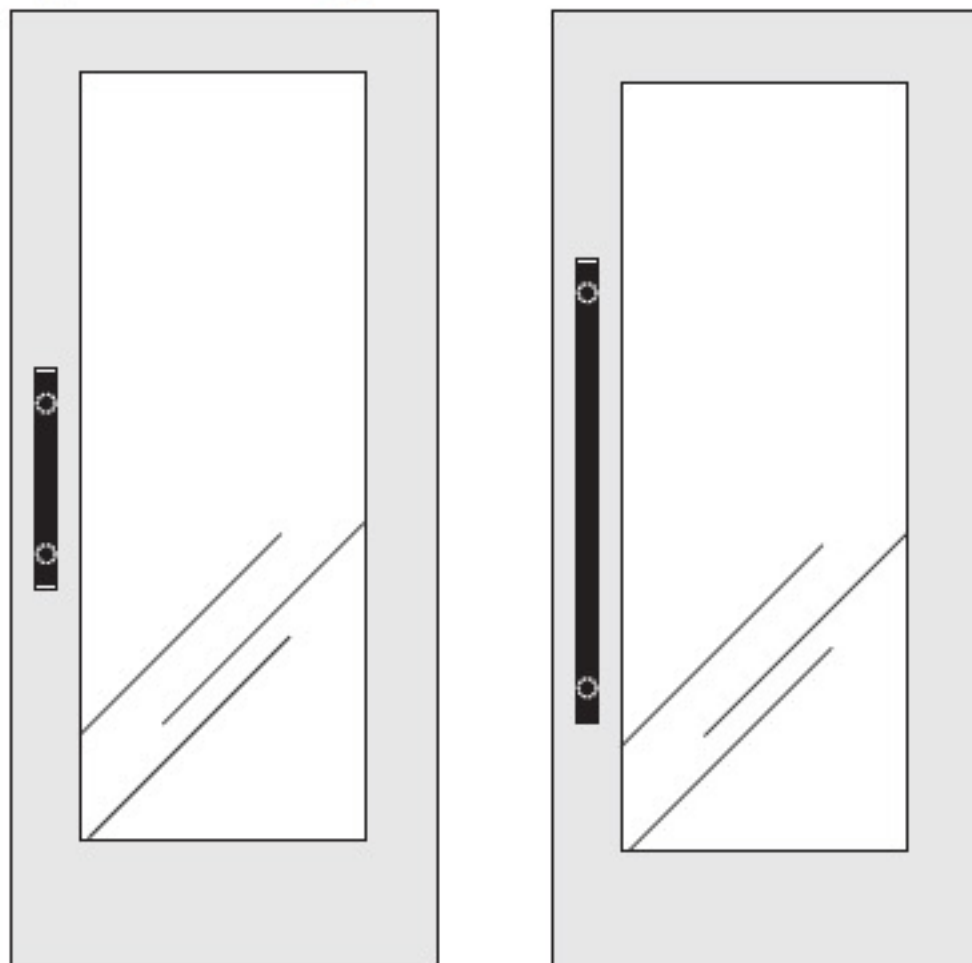
**Offset Pull**

| Pull No. | Diameter | CTC          |
|----------|----------|--------------|
| RM2640   | 1¼"      | 8", 11", 16" |

Up to 36" CTC available.



**Application Suggestions**



**Base Metals:** Brass, bronze, stainless steel

\*To specify multi-bar sets suffix -2 or -3 to pull number (example: RM2612-2).