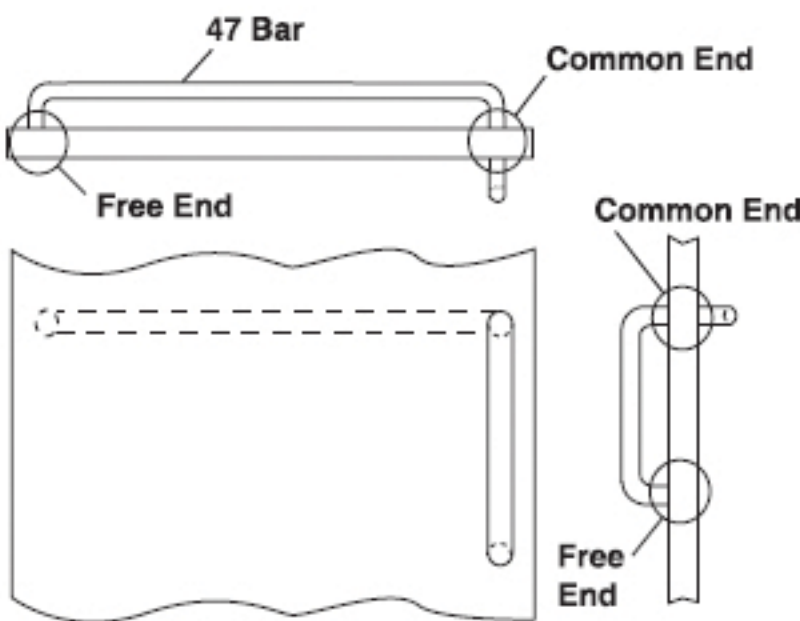


SERIES 47 PUSH AND PULL BARS MOUNTING DETAILS

Typical Mounting

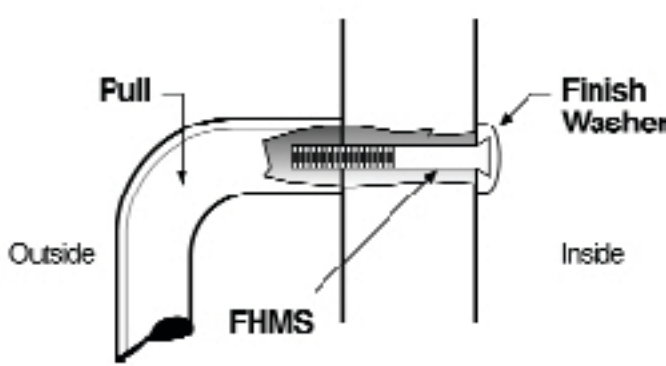


Mounting Spec #	Door Type	Pull Type	Mounting Type		
			Pull Free End	Push Free End	Common End
T1	Metal & Wood	Straight or Offset	12	12	5
T1HD	Metal & Wood	Straight or Offset	12HD	12HD	5HD
T2	Glass	Straight or Offset	15	15	13
T2HD	Glass	Straight or Offset	15HD	15HD	13HD
T3*	Metal & Wood	Straight or Offset	1	1	5
T3HD	Metal & Wood	Straight or Offset	1HD	1HD	5HD
T4	Metal	Straight	6	6	5
T4HD	Metal	Straight	6HD	6HD	5HD
T4	Metal	Offset	17	17	16
T4HD	Metal	Offset	17HD	17HD	16HD
T5	Wood	Straight or Offset	8	8	5

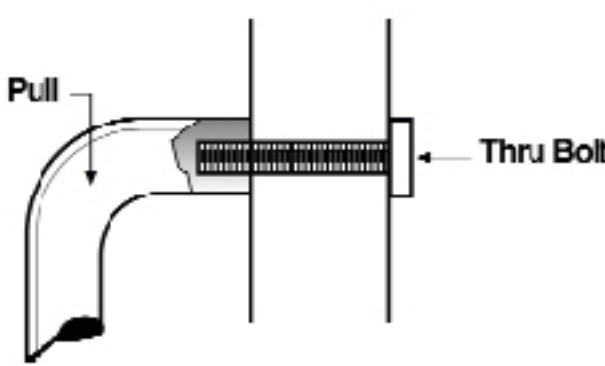
*T3 is the standard mounting method for Metal and Wood Doors.
NOTE: Heavy Duty (HD) mounting features hex drive for positive tightening and large overall size for superior strength. Recommended for high frequency and rough service openings.

FREE END DETAILS

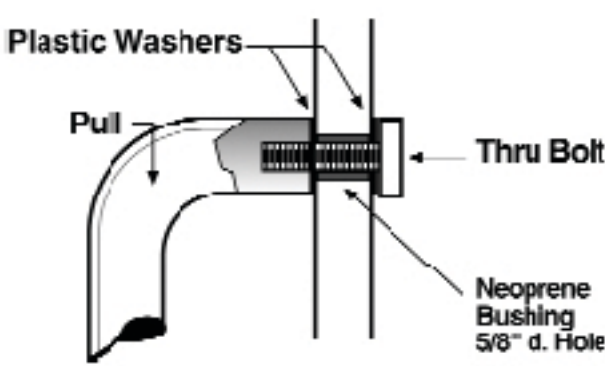
Thru Bolt



Drill Size			
Type	Bolt Size	Wood	Metal
1	¼ - 20	⅝	⅝
1HD	⅝ - 18	1 1/32	1 1/32
1XHD	⅝ - 16	1 3/32	1 3/32



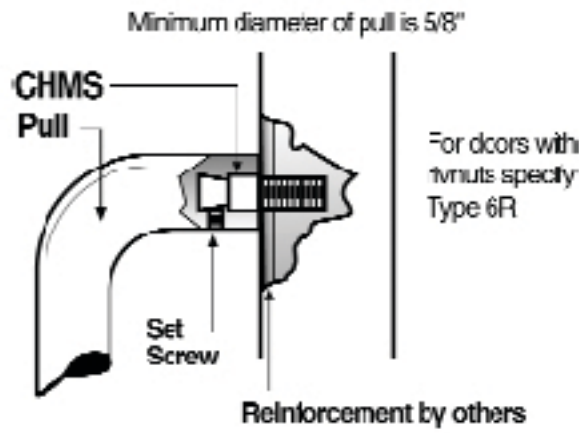
Drill Size			
Type	Bolt Size	Wood	Metal
12	¼ - 20	⅝	⅝
12HD	⅝ - 18	1 1/32	1 1/32
12XHD	⅝ - 16	1 3/32	1 3/32



Type	Bolt Size	Drill Size - Glass
15	¼ - 20	⅝
15HD	⅝ - 18	⅝
15XHD	⅝ - 16	⅝

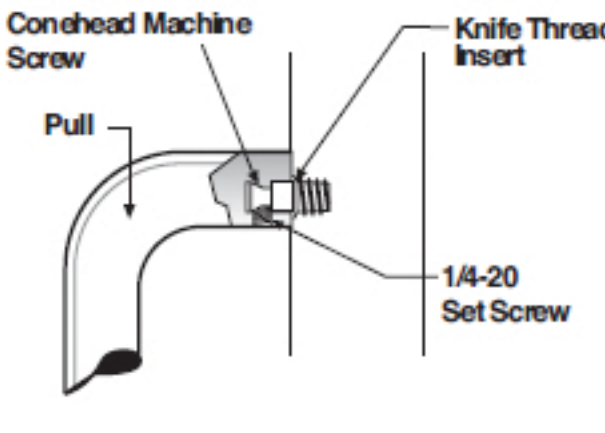
Surface Concealed

Metal Door - Type 6



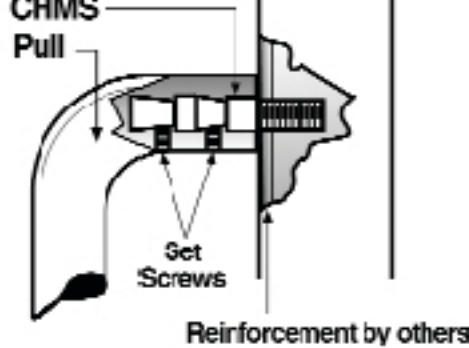
Type	Bolt Size	Drill Size - Metal
6	¼ - 20	¼ - 20 tap
6HD	⅝ - 18	⅝ - 18 tap

Wood Door - Type 8



Type	Bolt Size	Drill Size - Wood
8	¼ - 20	23/64 X ⅝ dp
8HD	⅝ - 18	7/16 X ⅝ dp

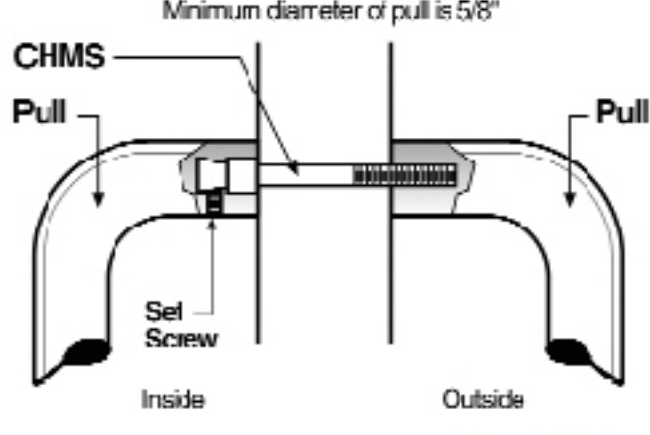
Metal Door - Type 17



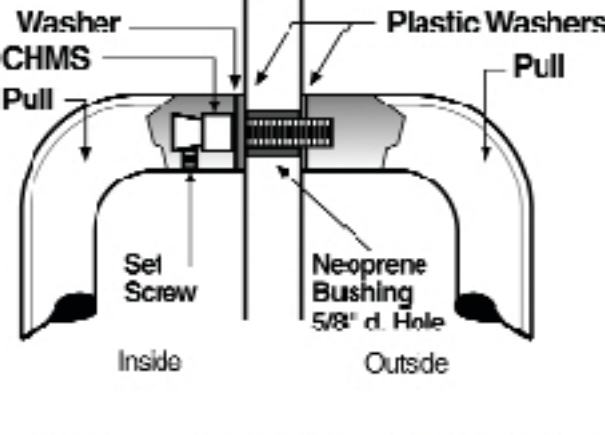
Type	Bolt Size	Drill Size - Metal
17	¼ - 20	¼ - 20 tap
17HD	⅝ - 18	⅝ - 18 tap

COMMON END DETAILS

Wood or Metal Door - Type 5



Drill Size			
Type	Bolt Size	Wood	Metal
5	¼ - 20	⅝	⅝
5HD	⅝ - 18	1 1/32	1 1/32



Type	Bolt Size	Drill Size - Glass
13	¼ - 20	⅝
13HD	⅝ - 18	⅝

NOTE: Heavy Duty (HD/XHD) mounting features hex drive for positive tightening and large overall size for superior strength. Recommended for high frequency and rough service openings.

How to Size Push Bars

Flush Doors

Door width:

- Minus 5" for bent end bars.
- Minus 5" for square end post mount bars.
- Minus 7" for round end post mount bars.

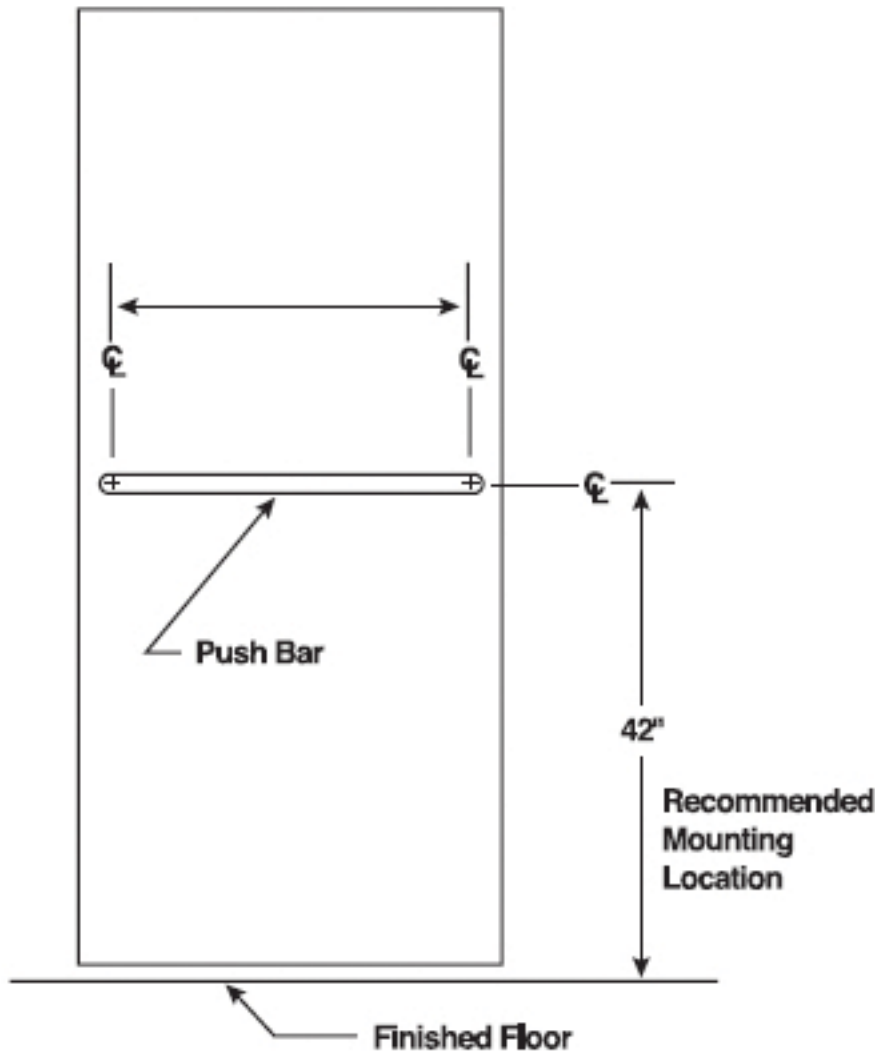
Stile and Rail Doors or Doors with Lites

Door width:

- Minus width of one stile.

CAUTION: Always confirm bars will not interfere with jamb or cause pinching hazard.

CAUTION: On narrow stile doors, be sure push bar base fits on the stile and bar does not interfere with the stop.



Handing of Doors

The handing of a door is determined from the outside of the opening.

Standing outside the door:

- If the hinges are on the right, it is a right hand door.
- If the hinges are on the left, it is a left hand door.
- If the door opens away from you, it is a regular bevel door.
- If the door opens toward you, it is a reverse bevel door.

